

EGPE (INV)

INVERNESS

31ft AMSL

N57 32.55 W004 02.85

7 nm NE of Inverness.

///maximum.drew.tributes

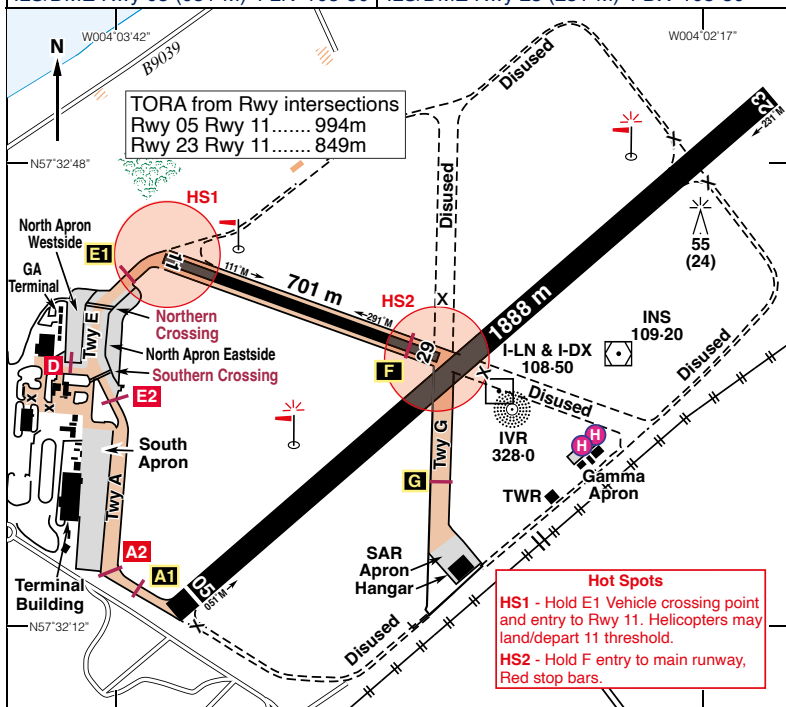
ADN 114-30 286 59-4

WIK 113-60 211 62-9

c/s Inverness TWR 118-405 RAD 122-605 ATIS 109-200 H24

VOR/DME 'INS' 109-20 On A/D NDB 'IVR' 328-0 On A/D

ILS/DME Rwy 05 (051°M) 'I-LN' 108-50 ILS/DME Rwy 23 (231°M) 'I-DX' 108-50



Rwy	Dim(m)	Surface	TORA(m)	LDA(m)	Lighting
05/23	1888x45	Asphalt	05-1888 23-1822	05-1822 23-1822	Ap Thr Rwy PAPI 3° Ap Thr Rwy PAPI 3°
11/29	701x18	Asphalt	11-701 29-701	11-701 29-701	Nil Nil

Op hrs: PPR. Mon-Fri 0630-2145 (0615-2230); Sat 0630-2100 (0615-2230); Sun 0630-2130 (0615-2230).

Landing Fee: Private light acft <3000 kg MTWA - £22.30 inc, VFR and booked in advance.

Customs: 6 hrs PNR for EU flights, 24 hrs PNR for other flights.

Hangarage: Ltd - By arrangement.

Maintenance: Highland Aviation.

continued

N57 32.55 W004 02.85

INVERNESS

31ft AMSL

Remarks: Operated by Highlands & Islands Airports Ltd., Inverness Airport, Inverness IV2 7JB. All operators, including executive and GA must make prior arrangements with a handling agent for ground handling. Charges will apply. Handling Agents:

Signature Flight Support, Tel: 01667 461122, Fax: 01667 461133; Freq 122.350.

Skytanking, Tel: 01667 464120, Fax: 01667 464129; Freq 131.430.

Highlands Jet Centre, Tel: 01667 462121.

Highland Aviation Tel: 01667 460361. (<6000KG MTOW).

High visibility clothing required airside.

Marshalling mandatory for all aircraft to or from South Apron and visiting aircraft to North Apron, however, marshalling will not be provided to outbounds from North Apron.

Taxiway between northern end of the South Apron and thld Rwy 11 available only to aircraft with wingspan up to, but not including 36m.

Only acft operating to and from the SAR Apron are permitted to use Taxiway G.

Out of hours flights are not available at Inverness unless the opening hours are extended. The HIAL out of hours indemnity scheme does not apply to Inverness.

Due to restricted parking availability, all aircraft should be left in a towable state.

Warnings: Bird hazard due to the surrounding terrain and tidal mud flats adjacent to the aerodrome.

Hill 678ft amsl 3.8 nm to ESE. High ground 1500ft amsl 5 nm to south, raising to 2018ft at 7 nm.

TV Masts 1073ft amsl 5.6 nm to N, and 1495ft amsl 8 nm to WNW.

Paragliding and Hang gliding takes place at Alturle Point, helicopter pilots should avoid overflying or operating in close proximity to this area at low level.

The status of Alturle Point is available from ATC.

Caution should be exercised when taxiing to hangar 1 due to the proximity of the adjacent security fence.

All pilots should be aware of the activities of a dangerous nature between Fort George EGD702 and the Black Isle SFC - 500ft during the operating hours of EGD702.

VRPs

Beaully Rail Bridge N57 28.57 W004 27.73

Cawdor Castle N57 31.40 W003 55.70

Culloden Viaduct N57 28.67 W004 03.75

Dingwall Stadium N57 35.73 W004 25.15

Dores N57 22.92 W004 19.92

Dunmaglass W/farm N57 14.53 W004 15.33

Invergordon Port N57 41.10 W004 10.40

Kinloss (Disused AD) N57 38.95 W003 33.70

Lochindorb N57 24.17 W003 42.95

Munlochy Bay Point N57 32.52 W004 12.65

Rosemarkie Mast N57 38.03 W004 04.37

Tomatin A9 Bridge N57 20.18 W003 58.88

Restaurant: Refreshments and Bar.

Car Hire: Avis, Tel: 01667 462787. Europcar, Tel: 0871 3849900.

Fuel: 100LL, Jet A1.

Winter: Mon-Fri 0600-1900,

Sat 0600-1430, Sun 0600-1900.

Summer: 0600-1900.

Out of hours Tel: 07836 202637 or

07595 223613.

Tel: 01667 464000 Admin

Tel: 01667 464276 ATC

Tel: 01667 464255 MET

Website: www.invernessairport.co.uk