

POOLEYS FLIGHT GUIDE

Elstree Aerodrome, Elstree

Hertfordshire WD6 3AW.

Tel: 020 8207 3749.

E-mail: editor@pooleys.com

AMENDMENT- AIRNOTE 4

AIRAC 11/2020 - 8 October 2020

Replacement/Additional Pages

417-418.....	Lee-on-Solent
703-704.....	Tiree
811-812a.....	Tresco Heliport (New Chart)

AIRNOTES

Airnotes provide a comprehensive listing of all changes applicable to the current Flight Guide. These are updated every 28 days in line with the AIRAC cycle and are available via the Pooleys Website.

Changes notified since the last issue of Airnotes are identified by a 'bullet' in the left-hand margin.

To obviate the necessity of incorporating lengthy manuscript amendments, it is suggested that pages which are subject to amendment be suitably annotated, and then refer to the Airnotes, as required, for details of the changes.

POOLEYS FLIGHT GUIDE

AIRNOTES

AIRAC 11/2020 - 8 October 2020

UK Flight Information Regions

- xvi** Amend Scottish frequency 133•675 to 128•675.

CLASSIFICATION OF UK AIRSPACE

- 2** Class D Amend Durham Tees Valley to read Teesside International.
- 3** Class E Add after a.
Parts of the Farnborough CTA;
Doncaster Sheffield CTA 13;
Add new paragraph after notes for para c-j
Notes: for para c
Additionally notified as Transponder Mandatory Zone and a Radio Mandatory Zone
Pilots of VFR flights who wish to operate without receiving an ATS within class E airspace in an acft with a serviceable transponder, or within class E airspace additionally notified as TMZ must display either:
a. The VFR conspicuity code Mode A700, with altitude reporting; or
b. The frequency monitoring code defined as VFR conspicuity with altitude reporting established for use in that airspace.
- 5** Class D VMC column, remove para "OR: At or below 3000ft.....surface in sight".

LOWER AIRSPACE RADAR SERVICE (LARS)

- **24/25** Exeter - Amend frequency from 128•975 to 128•980.

FREQUENCY MONITORING CODES

- 33** Replace **6.15.4572** for Farnborough with. This code may be used when flying in the vicinity of Farnborough ; VFR within class E airspace and VFR or IFR in class G airspace. Pilots must monitor the LARS West frequency.
- 33** **6.25.7366**, Add 7367* (For students flying solo).

DACS and DAAIS

- 34** **D005A** Predannack, amend limits to SFC-8000.
- **36** **D061** Woodbury Common, DAAIS, amend exeter App to 128•980.
- 37** **D136** Shoeburyness, amend Tel number from 01702 383254 to 383211/212.
- 38** **D130 & D132** Amend Farnborough App 125•250 to Farnborough Radar 133•440.
- 39** **D213** Kineton, amend remarks to read,
DAAIS: Coventry 123•830 when open, all other times London Information on 124•600. Pre-flight/Booking information on 01869 257489.
- 42** **D510A** Spadeadam, amend Carlisle TWR frequency to 123•605.
- 46** **R313** Scampton Amend Waddington Zone from 127•350 to 119•500.

AERODROMES

- 69** **ABERDEEN/Dyce** BMI Regional Hangar, renamed Logan Air Hangar.
Bond Offshore Helicopter Apron renamed, Babcock Apron.
- 70** **ABERDEEN/Dyce** Rwy dimensions: Add
Take-off: Rwy 16 from intersection with Rwy 23 - TORA 1310m.
Rwy 34 from intersection with Rwy 32 - TORA 1190m.
Handling: Remove Menzies information.

- 76 ALDERNEY** Warnings: Add, In Approach/Take-off Areas Obstruction: 26/Approach 08/Take-off Track 303ft AMSL N49 42.48N W002 12.48.
- 92 BARROW/Walney Island** Op hrs, amend Strictly PPR 24 hrs to Strictly PPR. Southerly Helipad removed.
- Buildings names updated and ATC Tower repositioned.
- 105 BELLARENA** Com/Nav: amend Bellarena Base to 118•685.
Remarks: add note, The UGC regrets that it cannot accept visiting aircraft during Covid 19 restrictions. Contact 07709 808276 for updates.
Contact details: Amend Tel to Mob: 07709 808276 and website from .com to .org
- 108 BENBECULA** Unlit windsock moved North, just South of mid point of disused taxiway.
- 109 BENBECULA** Op hrs: amend to, PPR 3 Hrs. Mon 0800-1745, Tue-Thu 0800-1645 (Summer 0800-1745), Fri 0800-1800, Sat 0800-0900, 1015-1245, Sun 1600-1730.
- 117 BIGGIN HILL** Heli (East) Helipad on taxiway E withdrawn. Southern windsock now lit.
Rwy 03/21 length amended from 1820m to 1806m.
- 118 BIGGIN HILL** Rwy Lighting: add Approach lighting to Rwy 03.
- Revised declared distances for Rwy 03/21:

Rwy	Dim(m)	Surface	TORA(m)	LDA(m)
03/21	1806x45	Asphalt	03-1781 21-1670	03-1555 21-1670
- 124 BIRMINGHAM** VRPs, M40 Junction 15 (Warwick) withdrawn.
- 126 BLACKBUSHE** Whole entry amended, see the Pooleys website for new pages <https://www.pooleys.com/pooleys-uk-flight-guide-amendments/>
- 127 BLACKBUSHE** Where shown, replace Farnborough Radar 125•250 with 134•355.
Circuits: Add, Where a light twin has difficulty integrating with slower acft in the 800ft circuit, the 1200ft circuit may be appropriate provided there is no expected jet or turbo-prop traffic. Pilots must communicate their intentions with Blackbushe ATSU.
- Replace Joining Procedure text with:-
There are two standard VFR / SVFR joins:
From outside CAS (N&W): Joins from the N&W shall descend to circuit height on the "deadside" (to the north of the AD).
From within CAS (S&E). Acft coming from within the Farnborough CTR shall join overhead at 1600ft AAL to ensure they are within the LFA. They shall descend on the deadside and integrate with the visual circuit.
- 128 BLACKBUSHE** Replace text info with, Exclusion areas to be avoided at all times. All circuits to the South of runway at 800ft QFE for most fixed wing acft. Jets and turbo props at 1200ft QFE. Rotary wing circuits flown at 800ft QFE typically inside the fixed wing circuit.
- **139 BOURNEMOUTH** Building names updated.
- 140 BOURNEMOUTH** Remarks: Handling Agents: replace Signature Flight UK Ltd with XLR Jet Centre (Executive) Tel: 01202 364401. Email: jetcentre@xlrbourneairport.com. Fuel: Amend to read, 100LL, Jet A1. By arrangement with Bournemouth Airport Fuelling. Email fuel@bourneairport.com Tel: 01202 364217, Fax: 01202 364219. Out of hours by arrangement.
- 152/3 BRISTOL** VRPs: Add Blagdon Lake N51 20•23 W002 42•78. BCN 139°/31nm. Remove VRPs Devizes and Weston Aerodrome.
- 157 BRIZE NORTON** CTR & VRP chart - Remove Redlands site from graphic. Chart area moved South to include Enstone airfield to the North.
- **160 CAERNARFON** Heli stand added by parking stand 6.
- 170 CAMBRIDGE** Com/Nav: amend APP/VDF frequency to 120•965 and RAD Director/Radar 124•980.
Grass Rwy 10/28 permanently removed. Hold Y3 removed, Hold Y2 added. New taxiway F added west of taxiway D. Intermediate hold F added. Taxiway L amended, Hold L withdrawn, Hold M renamed L1.
Op hrs: add, ATS Mon-Fri 0800-1800, Sat & Sun no ATS. Local flying only. No visiting aircraft.

- 171 CAMBRIDGE** Handling: Amend Execujet to read Cambridge Jet Centre and amend email address to fbo@cambridgeairport.com.
Add **Warnings:** Aerial activity takes place outside AD published Op hrs.
Rwy 05 - Possible turbulence in touch down area.
Taxiway Alpha - Please be aware of taxiing speeds and pedestrians crossing.
- 172 CAMPBELTOWN** Com/Nav: ADD VOR/DME MAC 116-000.
- 180 CARLISLE** Com/Nav: amend APP/TWR/VDF and Carlisle Radio frequency to, 123-605.
Aircraft transiting either NDB(L) CL or in the vicinity of the AD outside published Op hours should listen out 123-605.
- 187 CHARLTON PARK** Landing Fees: Amend to, Planes £20; Helicopters £30;
Twin Helicopters £75 & overnight parking £10.
Fuel: Amend to, AVGAS by arrangement, contact Robin Aird Mob: 07785 546315.
- 205 COLL** Op hrs: amend to, By arrangement. Strictly PPR.
Landing Fees: Amend to, £8.20, Indemnity permit required via Oban Airport.
- 206 COLONSAY** Op hrs: amend to, By arrangement. Strictly PPR.
Landing Fees: Amend to, £8.20, Indemnity permit required via Oban Airport.
- 207 COMPTON ABBAS** Landing Fees: Amend to, £15 for GA, £10 for Microlights.
Note: £3 reduction to £12 for GA with a 50 ltr or more fuel uplift.
- 213 COVENTRY** Op hrs: amend to, Strictly PPR. Mon-Fri 0900-1800,
Sat-Sun 0900-1700, (Summer) 0900-1800.
Roads updated, West Apron changes.
- 214 COVENTRY** Warnings: Add Large gull activity at landfill site 12nm SE of AD, South of Bubbenhall village.
- 226 CULDROSE** Runway 07/25 re-designated as 06/24.
- 230 DAMYNS HALL** Runway 07/25 added 480 x 25 m. Rwy 14/32 amended to 400m.
Circuits to read; Fixed wing at 1000ft QNH and Helicopters at 750ft QNH.
- 238 DENHAM** Add, **Northolt traffic** in the Northolt Radar Manoeuvring Area (RMA) will cross the Denham ATZ not below 1500ft QNH. Aircraft wishing to enter the Northolt RMA must obtain clearance from Northolt on 126.450 MHz.
- 240 DONCASTER SHEFFIELD (Robin Hood)** Com/Nav: Amend:
APP to 126-225, RAD to 126-225, 129-055.
- 241 DONCASTER SHEFFIELD (Robin Hood)** Remarks: In third paragraph amend Doncaster frequency from 126-230 back to 126-225.
Handling: Remove Consort Aviation radio 131-600 and replace with Email: doncaster@consortaviation.com.
- 243 DONCASTER SHEFFIELD (Robin Hood)** CTR/CTA & VRP Chart:
Doncaster CTA 13 added (RMZ/TMZ) Class E airspace FL85-FL195.
- 253 DURHAM TEES VALLEY** renamed **TEESSIDE INTERNATIONAL AIRPORT**.
Com/Nav: Amend call-sign from Durham to Teesside.
- 254 TEESSIDE INTERNATIONAL AIRPORT** Warnings: Add, Model aircraft flying takes place at Redmarshall, 3-7nm NE of Teesside AD from 0930-SS. Aircraft will remain within 500m of the site not above 400ft AGL.
ATC will advise when aircraft between 7kg and 20kg are operating.
- 256 DUXFORD** Overspill/GA grass parking area extended.
- 257 DUXFORD** Amend text 'Cambridge APP/RAD 123-605' to 'Cambridge APP 120-965'.
- 260 EARLS COLNE** Caution: Add, Pilots may experience windshear on both runways during strong southerly winds. Caution required when taxiing in the vicinity of helicopters due to down wash. Autogyros not permitted.
- 282 EDINBURGH** Com/Nav: add Delivery 121-980. GA apron added to NE edge of Turnhouse apron. Hold H7 added to accompany new GA apron.
- 283 EDINBURGH** Remarks: Add, Departing aircraft are to make initial contact with Edinburgh Delivery on 121-980.
- 290 ELSTREE** Southerly windsock is lit.

295 ENSTONE Revised declared distances for 08/26 Asphalt and Southside Grass:

Rwy	Dim(m)	Surface	TORA(m)	LDA(m)
08/26	800x18	Asphalt	08/26-890	08/26-800
08/26	565x25	Grass	08-565 26-655	08-565 26-565

296 ENSTONE Remarks: 3rd line down amend to read, Motor gliders, light aircraft, Microlights and Motor gliders operate from the aerodrome. Add, Hangarage and outside parking available on request. MOGAS by pre-arrangement.

- **298 EXETER** Com/Nav: amend to; APP 128-980 (LARS), TWR 119-805, RAD 128-980, 123-580 (as directed), ATIS 119-330.

Intermediate holds F2 & F3 not intermediate. South Apron hold renamed hold D1.

299 EXETER Handling: Amend email xlr@exeter-airport.co.uk to jetcentre@xlrexeter.com.

302 FAIROAKS Com/Nav: Remove NDB 'FOS' and DME 'FRK'.

- **303 FAIROAKS** Fuel: Add hours, Mon-Sat 0815-1740, Sun &PH 0915-1800 and by arrangement.

304 FAIROAKS Fairoaks Circuits: Remove paragraph;
"Unless coordinated with Farnborough the maximum altitude.....is 1400ft QNH."

306 FARNBOROUGH Com/Nav: add GND 121-815 and Zone 133-440.

Holds A2 & B2 re-designated as Intermediate holds.

Intermediate hold G1 & G2 added on East Apron.

- **307 FARNBOROUGH** Remarks: Prior permission from Farnborough Ops on 131-865. Warnings: Add, Below FL65 acft arriving/departing via the ATS route network can expect to operate within Class E airspace between ASLAP and 3nm West of HAZEL/within 7.5nm of GWC. Contact details: Remove FAX numbers and amend website to www.farnboroughairport.com

310 FARNBOROUGH CTR 1 & 2 added to chart.

Heli North re-aligned along M3.

- **347 GLOUCESTERSHIRE** Remarks: Add, PPE (high visibility jackets) must be worn by all pilots and personnel airside.

366 HENLOW Com/Nav: amend Henlow Radio to 121-105.

367 HENSTRIDGE Rwy 07/25 re-designated as Rwy 06/24.

395 JERSEY Hot Spot 2 enlarged encompassing holds A1 and G.

404 KITTYHAWK FARM Landing fees: amend to £10.00.

Contact details: remove Mob: 07751 326883.

409 LANDS END Hold X added on Rwy 16/34 South of intersection with Rwy 07/25.

Hold Y added on Rwy 07/25 East of intersection with Rwy 02/20.

410 LANDS END Op hrs: amend to, Winter: Mon-Fri 0815-1730, Sat 0815-1215.

Summer: Mon-Sat 0810-1830. Sunday closed.

Contact details: Remove fax numbers and add, Email: atc@isgg.co.uk

416 LEE-ON-SOLENT Com/Nav: amend Lee Radio to Lee Information.

Starter extension added to Rwy 05, dimensions 153m x 20m.

Op hrs: amend to, 0900-1800 (Summer), 0900-SS (Winter).

- **417 LEE-ON-SOLENT** Diagram amended to bring circuit within ATZ.

Amend Circuit text "right base for Rwy 25" to read "Rwy 23".

Amend Lee Radio to Lee Information.

- **419 LEEDS BRADFORD** Holds C, D2, F2, G1, G2, L2 & N2 amended to intermediate.

- **420 LEEDS BRADFORD** Op hrs: Amend to 0700-2300. PPR outside these hours.

433 LITTLE RISSINGTON Com/Nav: amend Rissington Radio to 120-775.

Revised declared distances:

Rwy	Dim(m)	Surface	TORA(m)	LDA(m)
04/22	1311x45	Asphalt	04/22-1491	04/22-1401
09/27	1074x45	Asphalt	09/27-1074	09/27-1074
13/31	975x45	Asphalt	13-975 31-975	13-929 31-975

437 LIVERPOOL New Link L and Hold L added by Hold A3.

- 439 LIVERPOOL** Warnings: Add, Radio Controlled model acft up to 20Kg operate at maximum alt 400ft agl, Frodsham Marsh, 132°/4.4nm; Halton Moss 085°/7.6nm & Arrowse Park 290°/11nm.
Fuel: Add, GA fuels 100LL only. Email: amend to, ppr@liverpoolairport.com
- 443 LIVERPOOL** VRPs: Remove Haydock Park and add the following:
Wigan Lakes MCT 308°/16.4 nm
 N53 31.28 W002 37.67 POL 236°/23 nm
 WAL 068°/19.8 nm
Winter Hill Mast MCT 332°/18.5 nm
 N53 37.53 W002 30.90 POL 245°/16.3 nm
 WAL 059°/26.3 nm
- 445 LONDON CITY** Apron extended to the East and renamed East Apron.
Remote ATC Camera Tower added 192 (172)ft on the South bank of the King George V Dock. Under construction and Hot spot 1 removed.
- 447 LONDON GATWICK** Hot Spot 3 removed.
- 454 LONDON LUTON** Rwy designators update from 08/26 to 07/25, amend accordingly.
- 462 LONDONDERRY/EGLINTON** Add Heli Aiming Point between West apron and disused runway.
- 482 MANCHESTER** Remarks: Amend paragraph "Pilots operating in the vicinity of.... encouraged to select SSR code 7366" to read "Pilots of transponder equipped aircraft flying under VFR within the Manchester Low Level Route should select either SSR code 7366 and maintain a listening watch on Manchester Radar 118.580 or SSR code 5060 and maintain a listening watch on Liverpool Radar 119.855.
- 488 MANCHESTER** VRPs: Remove Haydock Park and add the following:
Wigan Lakes MCT 308°/16.4 nm
 N53 31.28 W002 37.67 POL 236°/23 nm
 WAL 068°/19.8 nm
Winter Hill Mast MCT 332°/18.5 nm
 N53 37.53 W002 30.90 POL 245°/16.3 nm
 WAL 059°/26.3 nm
- 490 MANCHESTER/Barton** Helicopter training areas amended.
City Heliport renamed Manchester Heliport.
- 491 MANCHESTER/Barton** Contact details: Add
Email: info@manchesterheliport.co.uk and Website: www.manchesterheliport.co.uk.
- 492 MANCHESTER/Barton** Amend Standard overhead join is at 1800ft to read 1500ft.
City Heliport renamed to Manchester Heliport.
- 493 MANCHESTER/Barton** Helicopter Hover training: Amend HTA S to read HTA W.
Delete paras "HTA S is established....." and "HTA N is established....."
- 502 MIDLEM** Rwy designators, located incorrectly, swap over 05 & 06 and also 23 & 24.
- 505 MITCHELLS FARM** Com/Nav: amend Cambridge APP to 120.965.
- 515 NEWCASTLE** Hot Spot 6 added centered on hold D2.
- 525 NEWQUAY** Op hrs: amended to, PPR 0645-2200, OT by arrangement.
- 528 NEWTOWNARDS** Two grass runways added running parallel to the existing 03/21 & 15/33, dimensions 680x23m & 310 x 25m respectively.
- 540 NORTH WEALD** Rwy 12/30 withdrawn.
- 542 NORWICH** Op hrs: amend to, 01 Nov 2019 to 28 Mar 2020;
Mon-Fri 0615-2130; Sat 0615-2000; Sun 0615-2130.
- 543 NORWICH** Remarks: Add, Pilots operating in the vicinity of, but intending to remain outside Norwich CAS and maintaining a listening watch only on Norwich Radar freq 119.355 are encouraged to select SSR Code 7350. Selection of the code does not imply the provision of any form of Air Traffic Service.
- 546 NOTTINGHAM** 2 unlicensed grass rwy 09/27 & 03/21 added in the central triangle.
- 547 NOTTINGHAM** Warnings: Add, A fast-jet aircraft operates from the aerodrome.
- 555 OLD BUCKENHAM** Aircraft parking area C added (Overspill only). Holds F, 02G, 20H, 07E & 25D added. Taxiways re-designated.

- 556 OLD BUCKENHAM** Remarks: Add, Pilots and passengers using aircraft parking Area C must use the pick-up point designated on the AD Chart. No person is permitted to proceed south of the designated area at any time.
- **561 OLD WARDEN** Rwy 02/20 length amended to 799m.
 - **588 POCKLINGTON** Com/Nav: amend to c/s Pocklington Base 118-755.
 - 579 PERTH/Scone** Rwy 15/33 length/TORA & LDA all amended to 622m.
 - Helipad added just North of the Control Tower.
 - 595 PRESTWICK** Com/Nav: add VOR/DME 'TRN' 117-500.
 - 603 REDHILL** Hangarage & Maintenance, remove
London Helicopter Centres Tel: 01737 823514.
 - 604 REDHILL** Remarks: Remove "Use of aerodrome by microlight aircraft restricted to aerodrome based aircraft only."
Circuits: Remove "Touch and go not permitted on Rwy 08L/26R."
Paragraph Joining/Departing Procedures. Replace
"Helicopters join at 1200ft QNH. Depart at 1200ft QNH." with
"Helicopters join at 1200ft QNH. Depart between 700ft and 1200 ft QNH."
Noise abatement: Remove "Avoid overflying South Nutfield village and the East Sussex Hospital. Contacts: Remove Fax number.
 - 609 ROCHESTER** Rwy 16/34 and parallel taxiway removed.
 - 610 ROCHESTER** Delete reference to Rwy 16/34.
Add VFR Flight Procedures. a) Departing Rwy 02 to the East via the overhead is preferred but a right turn after passing 1500ft QFE can be requested.
b) Departing Rwy 20 to the East, aircraft should depart overhead or climb ahead on runway heading until clear of the built up area to the East.
 - 617 ST ATHAN** Taxiway J renamed Apron J, Hold J removed.
Remarks: Circuits: Replace "If circuit active....." with "When circuit flying is taking place involving civil and military acft, civil circuits are to be flown."
• Add, AD not available when MET visibility less than 1500m.
Contact details: Amend to,
Tel: 01446 243901 A/D Manager, Tel: 01446 243940 ATC, 243943 ATIS.
 - 649 SHOREHAM** Handling: Amend to, Contact handling@flybrighton.com.
Contact details, remove Fax.
 - 663 SOUTHAMPTON** Farnborough CTA-8 TMZ added East of Solent CTA-6.
 - 664 SOUTHEND** Inflight hangar renamed SENA Hangar. SENA apron added.
Contact details: Amended Stobart Jet Centre number to 01702 538600.
 - 675 STORNOWAY** Op hrs: amend Sunday hours to 1300-1745.
 - 683 STURGATE** Remove the displaced threshold and remove the starter extension from the start of Rwy 27. Rwy lighting, amend 09 to read PAPI and Rwy 27 to AVASIS. Remarks: Amend Op hrs to, Weekdays 0800-1630, Weekends 1000-1500 winter, 0900-1700 summer. Non radio traffic not accepted.
 - 685 SUMBURGH** Op hrs: amend Saturday hours to 0730-1430.
 - **694 THIRSK (SUTTON BANK)** Com/Nav: amend to, Local Frequency 118-685.
 - 700 THURROCK** Replace Rwy info text 07R/07L with 07R/25L and 07L/07R with 07L/25R.
 - **703 TIREE** Rwy 17/35 withdrawn, re-designated as Disused.
 - 710 UPAVON** Com/Nav: amend Upavon Radio to 124-100.
 - 719 WELLESBOURNE MOUNTFORD** Remarks: Amend
'Rwy 05/23 is not available from 1600 Fri to 0800 Sun' to read
'Rwy 05/23 is not available from 1600 Fri to 0900 Sun'.
 - **722 WESTRAY** Rwy 01/19 withdrawn.
 - **725 WEST WALES/Aberporth** Com/Nav:
Amend West Wales Information/Radio 122-150 to read 122-155.
Hot Spot 2 added on intersection with Rwy 07/25 and new Twy B.
 - 745 WOLVERHAMPTON** Southerly Asphalt parking area now marked as disused.
 - 746 WOLVERHAMPTON** Circuits: Replace
"Autogyros should follow the fixed wing circuit" with
Autogyros are to fly the standard fixed wing circuit and profile. Prefix callsign with "Gyro"

752 WYCOMBE AIR PARK/Booker Fuel: UL91 withdrawn.

759 YEOVILTON Runway 09/27 re-designated as 08/26.

HELIPADS/HELIPORTS

811 SILVERSTONE HELIPORT Amend PPR to; Strictly PPR to the following;

Tel: 01604 817115 or Email: info@silverstone-helicopters.co.uk.

AVIATION ADDRESSES

851 Civil Aviation Authority (Headquarters) Amend to,
Aviation House, Gatwick Airport South, West Sussex, RH6 0YR.

Tel: 0330 0221500. Website: www.caa.co.uk

852 Civil Aviation Authority (Safety Regulation Group) Amend to,
Aviation House, Gatwick Airport South, West Sussex, RH6 0YR.

Tel: 01293 567171, Fax: 01293 573999. Website: www.caa.co.uk

RAF 2 FLYING TRAINING SCHOOL MIL VOLUNTEER GLIDING SQUADRONS

834 RAF Topcliffe Add, ICF Leeming Zone 133•375.

Remarks: *continued*

Noise Abatement: Avoid overflying built up areas

Runway 23

Take-off – maintain runway heading until approx. 1 nm into the Solent before turning.

Landing – No lower than 1000ft AAL heading for the Titchfield Gyratory (marked on map attached) maintaining clear of built up areas - for right base join, remaining south of the housing head for the south of the copse and – Downwind head for the small triangular copse and turn on to base-leg prior to reaching the most southerly corner of the copse.

Runway 05

Take-off – Remain west of the disused railway line (aim to turn crosswind over the solar farm if at or above 500ft AGL) and head towards the triangular copse continue climb to circuit height or above, remaining south of Fareham housing and turning right for overflight of the Titchfield gyratory. No practice engine failures after take-off.

Landing – No restrictions.

Circuit Height 1000 ft QFE.

Circuit directions: Standard circuit Rwy 23 L/H, Rwy 05 R/H. Warbird Rwy 23 R/H, Rwy 05 L/H

Rwy 23 maintain runway heading until approx. 1 nm into the Solent before turning crosswind. Turn downwind when west of the beach huts and houses. Aim for the triangle copse on downwind. Turn onto base-leg prior to reaching the copse and maintaining clear of built up areas.

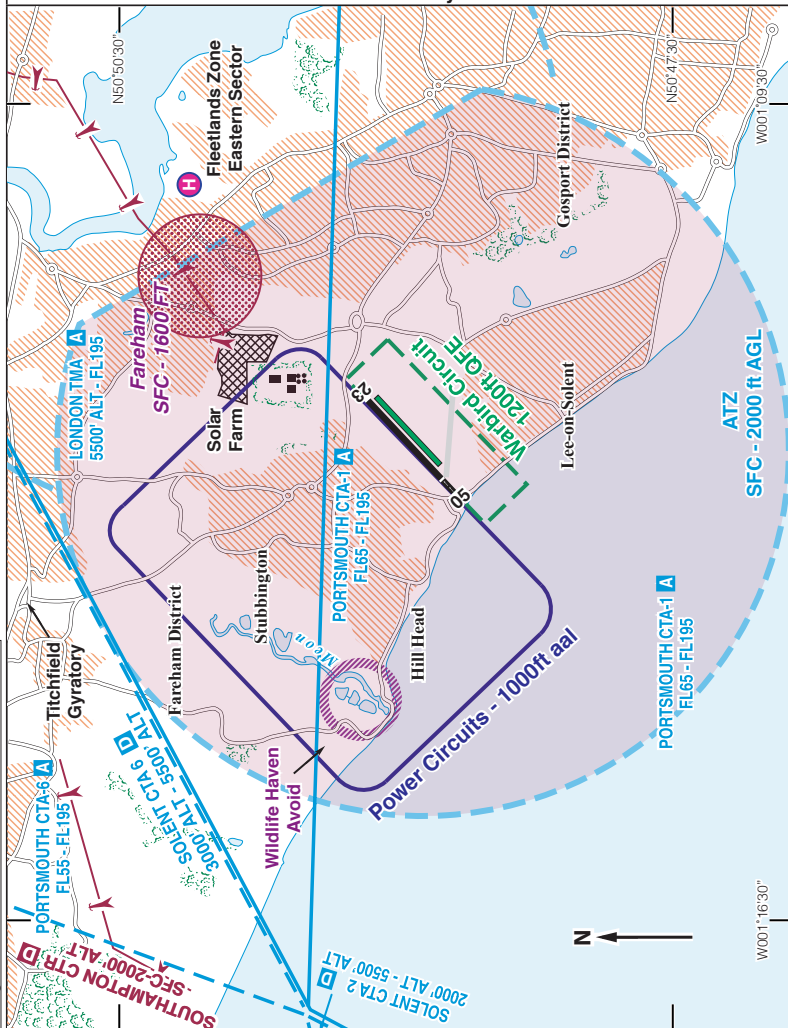
Rwy 05 Remain west of the disused railway line (aim to turn crosswind over the solar farm if at or above 500ft AGL) and head towards the triangular copse, turning downwind just prior to reaching the copse and maintaining clear of built up areas.

Restaurant: Cafe in the reception/Terminal area with accessible toilets.

Fuel: 100LL, Jet A-1.
See website for details.

Tel: 01329 824748 Ops
Email: ops@solentairport.co.uk
Website: www.solentairport.co.uk

Circuits - Runway 05/23



Changes: Power circuit amended, Warbird circuit added.

Circuits - Acft arriving from the North are suggested to join via Wickham VRP, for a downwind or right base for Rwy 23 remaining west and outside Fleetlands ATZ. Straight-in-Approach Rwy 23 - call Fleetlands Information 135•700 for ATZ transit prior to Wickham VRP. Standard overhead joins are available on request with Lee Information and are dependent on the activity of the Warbird circuit. Circuits at 1000ft AAL - LH on 05 and RH on 23. Warbird circuit at 1200ft AAL - RH on 05 and LH on 23.

EGPU

TIREE

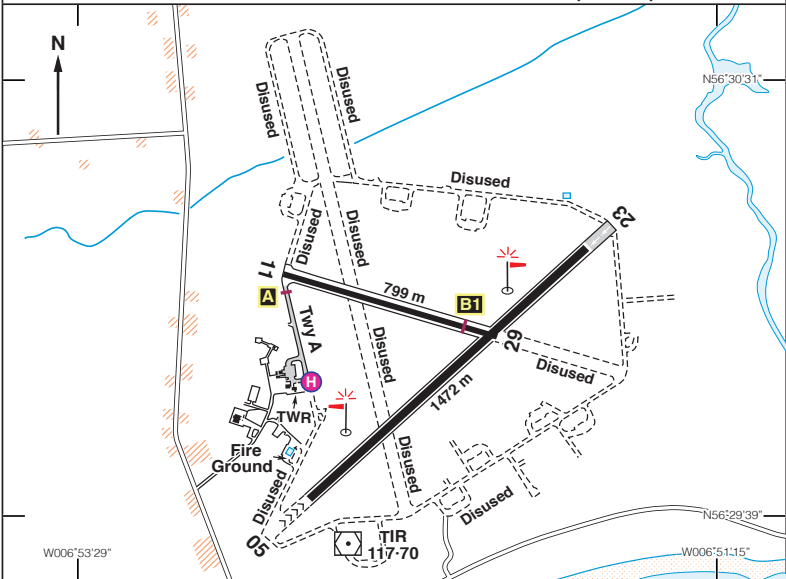
N56 29.95 W006 52.15

38ft AMSL

2.5 nm NNE of Balemartin.

BEN 113-950 167 60-9

c/s Tiree Information 122-705 AFIS.VOR/DME 'TIR' 117-70 (On A/D).



Rwy	Dim(m)	Surface	TORA(m)	LDA(m)	Lighting
05/23	1472x30	Asphalt	05-1402 23-1402	05-1402 23-1350	Rwy* APAPI 3° Rwy* APAPI 3°
11/29	799x19	Asphalt	11/29-799	11/29-799 ABn Wh	Rwy*

* Portable Electric.

Op hrs: Strictly PPR. Winter: Mon-Sat 0930-1800; Sun 1500-1615.
Summer: Mon-Sat 0930-1800, Sun 1500-1615, and by arrangement.

Landing Fee: Private light aircraft up to 3000 kg MTWA - £19 inc, VFR and booked in advance.

Customs: Nil. **Hangarage:** Nil. **Maintenance:** Nil.

Remarks: Operated by Highlands & Islands Airports Ltd. Aerodrome PPR.
All taxiways are closed except between threshold of Rwy 11 and the parking apron.
Unserviceable sections of runways are fenced off and marked with white crosses.
For details on the HIAL Indemnity scheme go to www.hial.co.uk

Warnings: Bird hazard - Large flocks of geese in the vicinity of the airfield all year round. Dome 530ft amsl, 214°/3.2 nm. Wind Turbine 262ft agl, 059°/4.4 nm.

Restaurant: Lodge Hotel, Tel: 01879 220329. Scarinish Hotel, Tel: 01879 200308.

Car Hire: MacLennan 01879 220555. Taxi: 01879 220419.

Fuel: Nil.

Tel: 01879 220456 Airport, Fax: 01879 220714 Airport.

Government A/D

EGXZ

N54 12.34 W001 22.90

TOPCLIFFE

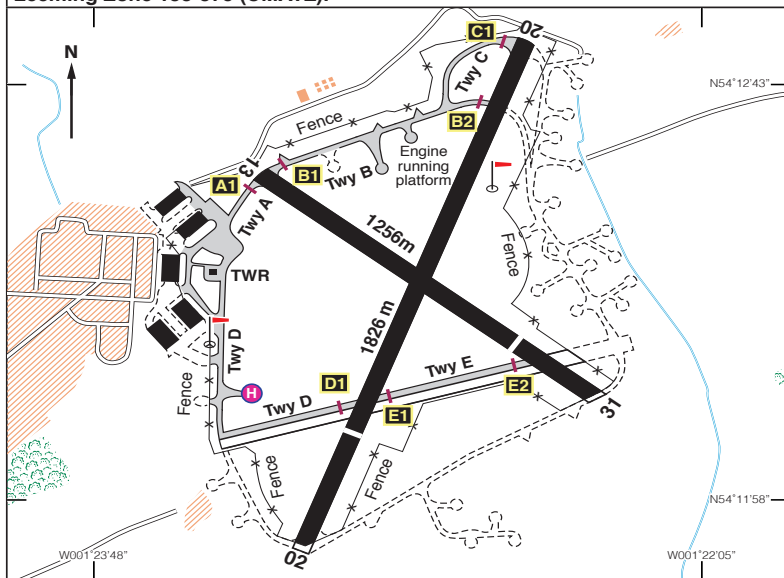
91ft AMSL

2.5 nm SW of Thirsk.

POL 112-10 046 37-6

APP 125-000. TWR 121-450. Talkdown 123-300.

Leeming Zone 133-375 (CMATZ).



Rwy	Dim(m)	Surface	TORA(m)	LDA(m)	Lighting
02/20	1826x45	Asphalt	02-1688 20-1630	02-1434 20-1630	Ap Thr Rwy PAPI 3° Ap Thr Rwy PAPI 3°
13/31	1256x45	Asphalt	13-1096 31-1186	13-1096 31-946	Thr Rwy PAPI 3° Ap Thr Rwy PAPI 3°

Op hrs: PPR. H24.

ATZ active H24.

Landing Fee: MoD(RAF) Rates.

Customs: Nil.

Hangarage: Nil.

Maintenance: Nil.

Remarks: RAF Aerodrome. Satellite aerodrome of RAF Linton-on-Ouse.

Leeming/Topcliffe CMATZ controlled by Leeming Zone 133-375 or Topcliffe APP 125-000.

Circuits - RH on Rwy 13 and 20.

Helicopters route via West Tanfield, 270°/7.5 nm or Bagby 080°/3 nm.

Glider flying evenings Mon-Fri; Sat and Sun SR-SS.

Freq 125-000 used out of hours.

Mast 227ft amsl, 277°/0.6 nm from ARP.

Fuel: Nil.

Tel: 01347 848261 Ext 7491/2 Linton Ops
Tel: 01845 595388 ATC.

EGBV

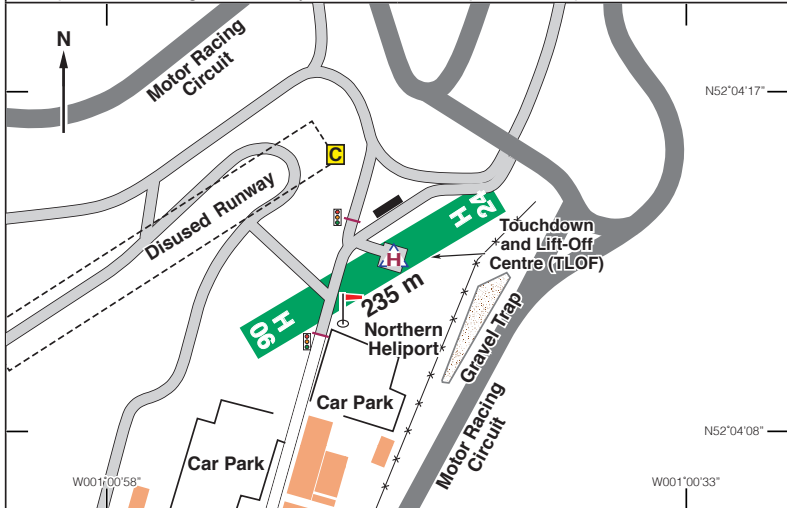
N52 04.14 W001 00.73 **SILVERSTONE HELIPORT** 502ft AMSL

4 nm S of Towcester.

DTY 116-40 152 7-6

c/s Silverstone Radio 121-080 A/G.

ATC provided during certain major events. Details published by NOTAM.



FATO	Dim(m)	Surface	TODAH(m)	LDAH(m)	Lighting
06/24	235x32	Grass	06-203 24-203	06-203 24-203	Nil Nil

Op hrs: Strictly PPR. Wed-Sun Summer 0830-1730, Winter 0900-1730 or SS

Landing Fee: On application.

Customs: Nil.

Hangarage: Nil.

Maintenance: Nil.

Remarks: Operated by Silverstone Circuit, Silverstone, Towcester, Northants, NN12 8TN. Silverstone is primarily a motor racing circuit and available to radio equipped aircraft only.

Strictly PPR to the following;

Tel: 01604 817115 or Email: info@silverstone-helicopters.co.uk.

Requests for Mon, Tue or extended Op Hrs to be made when applying for PPR.

Restricted Area (Temporary) is promulgated (AIC (Mauve) for British Formula 1 Grand Prix event. Pilots must obtain a briefing for this event as there are specific ATC procedures in force and various ATC frequencies in use.

Helicopter Circuits at 700ft QFE, 1200ft QNH; 06 RH, 24 LH.

Departures: Helicopters should take-off along the axis of the clearway and on 06 turn before the Grandstand to the crosswind leg.

Departures should be at as high a rate of climb as can be achieved.

Noise Abatement Procedures: Avoid overflying Silverstone and Whittlebury villages.

Fuel: Nil.

Tel: 01327 857752

Fax: 01327 857769

EGHT

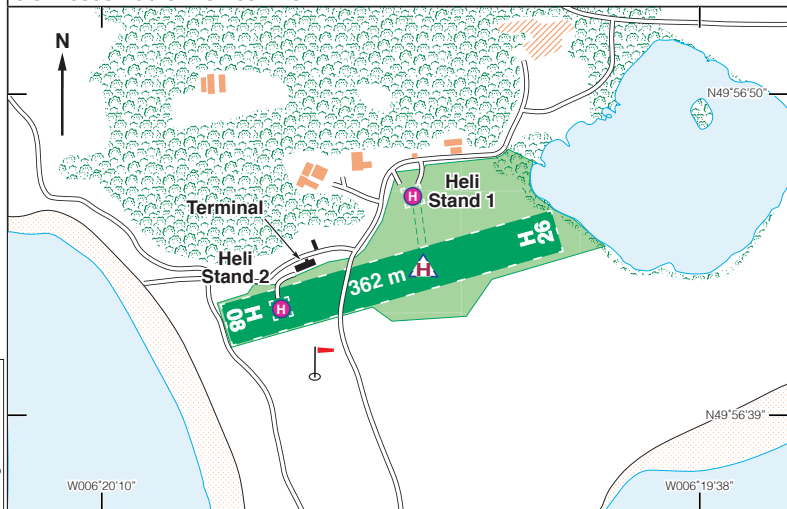
N49 56.73 W006 19.88

TRESCO HELIPORT

20ft AMSL

1.5 nm north of Hugh Town, Isles of Scilly.

c/s Tresco Radio 118·205 A/G.



FATO	Dim(m)	Surface	TODAH(m)	LDAH(m)	Lighting
08/26	362x45	Grass	08-356 26-346	08-354 26-362	Nil Nil

Op hrs: 0800-1730.

Landing Fee: On application.

Customs: By arrangement.

Hangarage: Parking available.

Maintenance: Nil.

Remarks: Operated by Tresco Heliport, Tresco, Isles of Scilly, TR24 0QQ.

Safety Area and FATO combined and marked with inlaid concrete markers.

The landing TLOF STAND 2 is marked with L-shaped concrete markers at the Westerly end of the FATO. No shutting down on this TLOF.

Shutting down and short stay parking is on STAND 1 on the north side of the airfield. There are no runway designators or 'H's at either end of the FATO.

Pilots are to avoid overflying a bird nesting site located 500m to the Southeast of the heliport by not approaching from that direction.

Warnings:

- Line of trees 50m to the North and parallel to the strip 30ft AGL.
- Great Rock 100m Southeast, 40ft AGL.

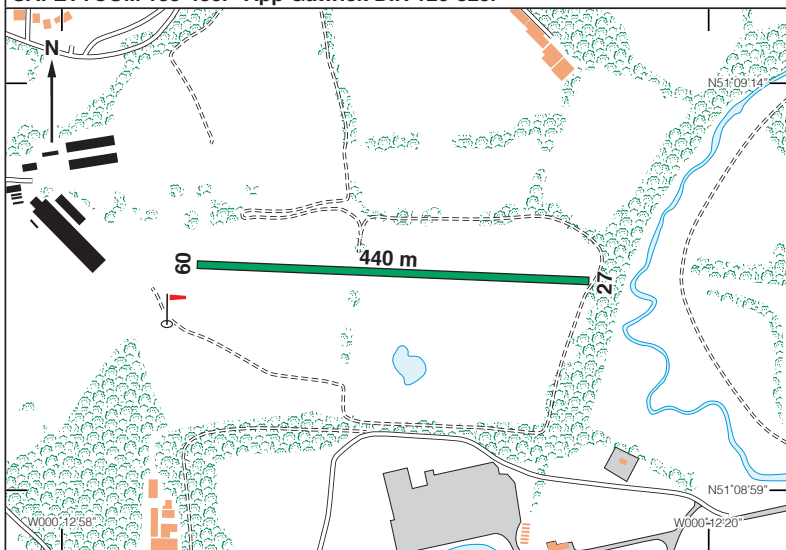
Fuel: Nil.

Tel: 01720 422970 Tresco Estates
 Mob: 07833 096375 Tresco Estates
 Fax: 01720 423529 Tresco Estates
 Email: heliportmanager@tresco.co.uk
 Website: www.tresco.co.uk

N51 09.12 W000 12.65 **VALLANCE BY WAYS GATWICK** 202ft AMSL

Located NW Corner of Gatwick Airport **OCK 115-300 136 12-7**

SAFETYCOM 135-480. App Gatwick DIR 126-825.



Rwy	Dim(m)	Surface	TORA(m)	LDA(m)	Lighting
09/27	440x9	Grass		Unlicensed	Nil

Op hrs: Available only with PPR (Telephone before departure, both AD and Gatwick)

Landing Fee: Donations to Gatwick Aviation Museum. **Customs:** Nil.

Hangarage: Nil. **Maintenance:** Nil.

Remarks: Operated by Gatwick Aviation Museum, Lowfield Heath Road, Charlwood, Surrey, RH6 0BT.

No permission without transponder and strict PPR to 01293 862915 and also to Gatwick ATC watch manager on 01293 601031

Helicopters only except for the one fixed wing based at the strip.

Visitor welcome at pilot's own risk.

Helicopter parking is adjacent to the western end of the grass strip (though not marked with an H on the ground).

Circuits: To the North and avoiding Charlwood.

Warnings: Aerodrome located within the Gatwick CTR. Keep a watch out for deer. Rwy 27 Approach has 60ft trees.

Fuel: Nil.

Tel: 01293 862915
Email: gpv gat@aol.com
Website: www.gatwick-aviation-museum.co.uk

Intentionally Blank

Airfield Plates for the UK, Ireland, Europe and beyond can be downloaded on to your iPad, iPhone or Android device via the Pooleys iPlates app.

www.pooleysiplates.com

