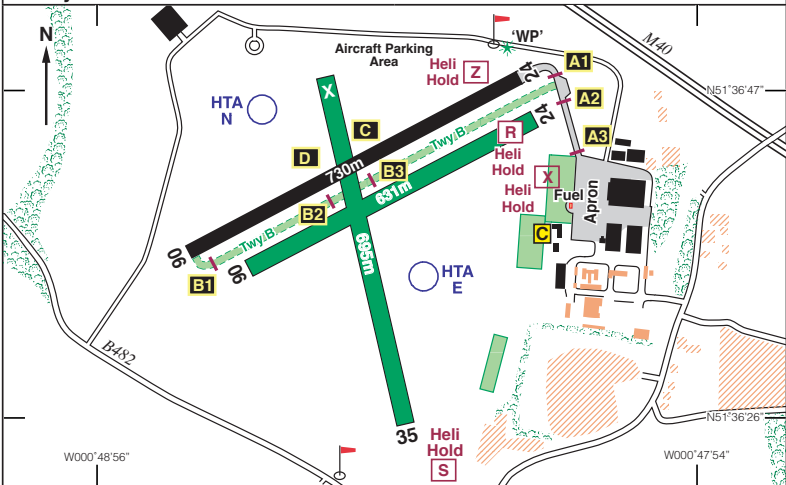


EGTB

N51 36.70 W000 48.50 **WYCOMBE AIR PARK/Booker** 513ft AMSL

2.5 nm SW of High Wycombe **BNN 113.75 237 11.8, CPT 114.35 068 16.9**

c/s Wycombe Radio 126.555 A/G.



Rwy	Dim(m)	Surface	TORA(m)	LDA(m)	Lighting
06/24	730x23	Asphalt	06-730 24-730	06-730 24-730	Thr Rwy APAPI 4° Thr Rwy APAPI 4°
06/24	631x23	Grass	06-631 24-631	06-631 24-631	Nil Nil
35	695x30	Grass	35-695	35-695	Nil

IBn 'WP' Gn

Op hrs: PPR. 0900L-1730L.
 Winter: Tue-Thu & BH 1730L-1900L. Summer: Tue, Thu, Sat, Sun & BH 1730L-2000L.

Landing Fee: Minimum charge £14 inc VAT **Customs:** PNR.

Hangarage: Limited. **Maintenance:** Fixed wing & Helicopter available.

Remarks: Operated by Airways Aero Associations Ltd. PPR essential. Noise Abatement Procedures in Force - pilots must obtain briefing before departure. No ATC, pilots are responsible at all times for lookout and traffic separation. Joining aeroplanes are to position to overfly the runway in use at 1200ft QFE, on the runway QDM. When overhead the midpoint of the runway, turn left or right (depending on the circuit direction) to level at circuit height 1000ft QFE on the crosswind leg prior to turning downwind.
Variable Circuits: - see overleaf. Visit website for video of circuit procedures.
 Helicopter circuit 750ft inside fixed wing circuit.

Caution: Intensive tug glider launching. Gliders will be flying a circuit opposite to that in use by powered aircraft. Grass areas liable to waterlogging.

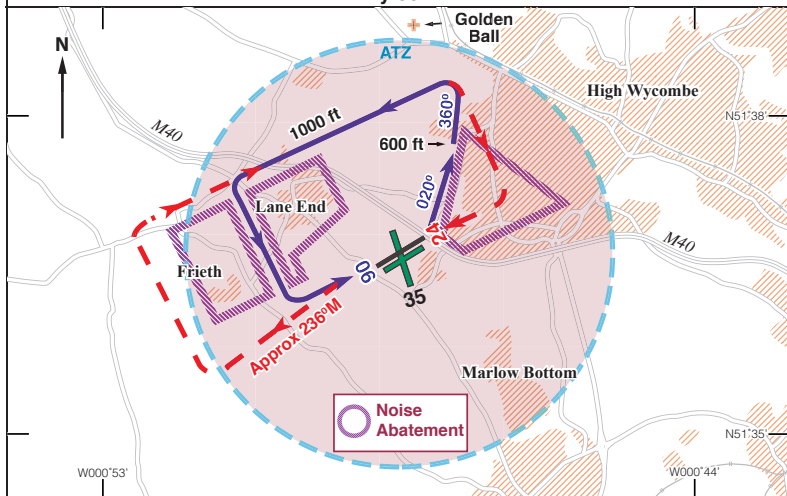
Warnings: High ground rising to 442ft amsl 2.5 nm to the SW with radio mast (Lgtd) 528ft amsl. Non standard markings on main apron do not guarantee wing-tip clearance, taxi with extreme caution.
 No overhead transits of aircraft due to gliding activity.

Restaurant: Licensed Restaurant (7 days a week), Tel: 01494 556923.

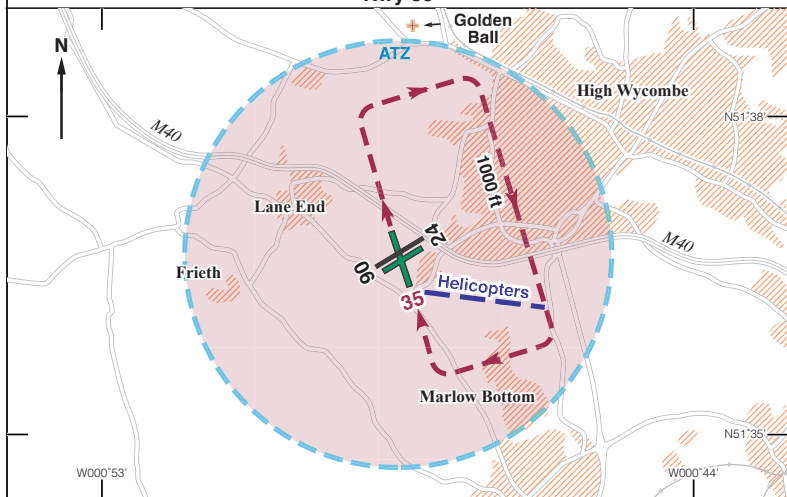
Fuel: 100LL, Jet A1.	Tel: 01494 443737 (Ops/PPR) Website: www.wycombearpark.co.uk
-----------------------------	---

WYCOMBE AIR PARK/Booker – Circuits:

Rwy 06/24



Rwy 35



Pilots **must** obtain briefing on Noise Abatement Procedures before departure.

Helicopters should join from the North at the 'Golden Ball' at 750ft QFE.