

# EGFF

## CARDIFF

220ft AMSL

N51 23.80 W003 20.60

8.5 nm SW of Cardiff.

BCN 117-45 192 20

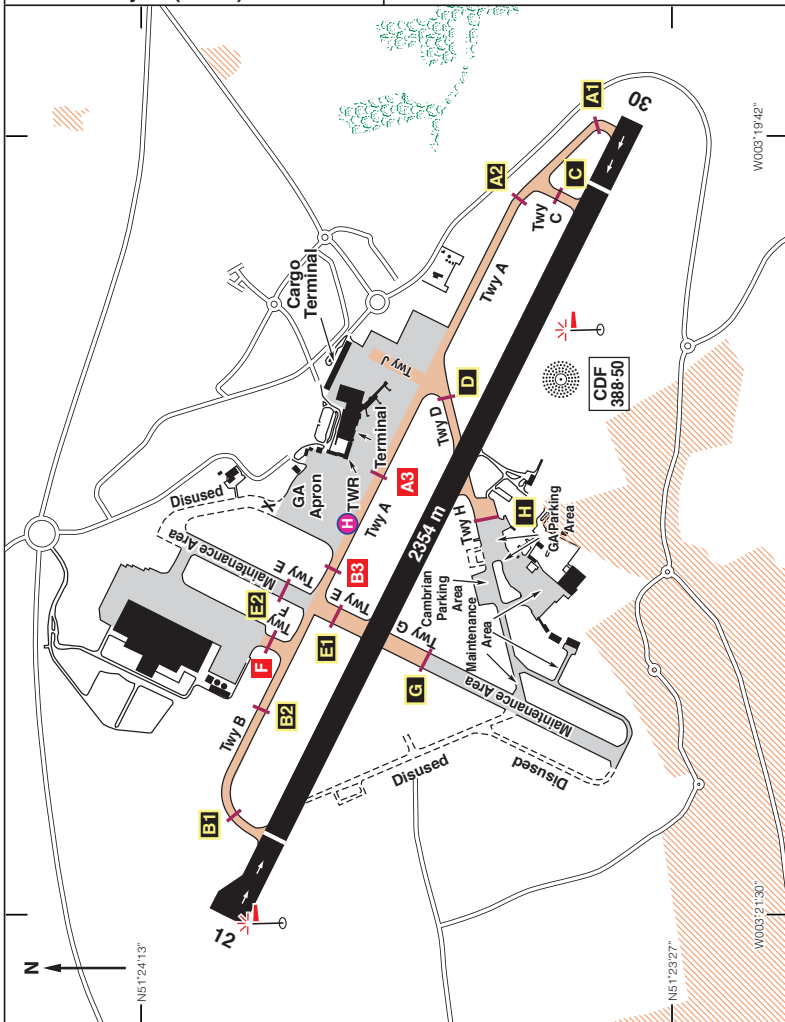
c/s Cardiff APP 119-155 Initial contact, 125-855 (as directed) | TWR 133-100

RAD 125-855, 119-155 LARS | ATIS 132-480

NDB 'CDF' 388-500 (On A/D)

ILS/DME Rwy 12 (119°M) I-CDF 110-70

ILS/DME Rwy 30 (299°M) I-CWA 110-70



## EGFF

N51 23.80	W003 20.60	<b>CARDIFF</b>		220ft AMSL
<b>Rwy</b>	<b>Dim(m)</b>	<b>Surface</b>	<b>TORA(m)</b>	<b>LDA(m)</b>
12/30	2354x45	Asphalt	12-2318 †12-2098 30-2354 †30-2202	Ap Thr Rwy PAPI 3° Ap Thr Rwy PAPI 3°
† Take-off: Rwy 12 from Holding Point B - TORA 2098m Rwy 12 from Holding Point E - TORA 1494m Rwy 30 from Holding Point C - TORA 2130m Rwy 30 from Holding Point D - TORA 1426m				
<b>Op hrs:</b> H24.				
<b>Landing Fee:</b> Up to 1000kg £20.50; 1001–1500kg £23.00; 1501–2000kg £28.50; 2001–2500 kg £32.00; 2501–3000 kg £37.50; 3001-4000 £58.00 + VAT. Parking: £16.80 + VAT all above weights. First 4 hours free.				
<b>Hangarage:</b> Nil.		<b>Maintenance:</b> Nil.		<b>Customs:</b> Available.
<b>Remarks:</b> Operated by Cardiff Airport Ltd, Cardiff Airport, Rhoose, Barry, Vale of Glamorgan CF62 3BD. PPR to non-radio aircraft. Flights within the Cardiff CTR/CTA are governed by the regulations applicable to Class 'D' Controlled Airspace. Pilots operating within the vicinity of, but intending to remain outside the Cardiff controlled airspace within the area defined in EGFF AD 2.22 Flight procedures and maintaining a listening watch only on Cardiff approach frequency 119.155, are encouraged to select SSR code 3636. VRPs are listed overleaf. VFR Routes - See pages 179,180 and chart at page 181. Due to proximity of St. Athan aerodrome (3nm W) overhead joining will not normally be approved. Rwy 30 RH circuits unless otherwise directed by ATC. Handling of all non-based aircraft mandatory. Handling Agents: Aeros Flying Club, Tel: 01446 710000; Signature (Executive & GA), Tel: 01446 712637. Global trek (Executive & GA), Tel: 01446 712699. High-Visibility clothing MUST be worn airside. All departing aircraft are required to file a full or abbreviated flight plan electronically prior to departure. <b>Warnings:</b> Expect turbulence on final approach to Rwy 30 in strong West to South Westerly winds and on final to Rwy 12 in strong East to North Easterly winds. Single engined aircraft should avoid overflying the Chemical Complex at Barry. TV Mast 1294ft amsl 034°M/4.4 nm and 1161ft amsl 332°M/4.3nm. R.A.F. St Athan is located just 3nm west of Cardiff Airport. Fast jets operate in their circuit VFR. Glider flying takes place at weekends. Cardiff ATIS will advise whether St. Athan is active.				
<b>Restaurant:</b> Restaurant and refreshments available in Terminal Building.				
<b>Car Hire:</b> Hertz/Europcar 01446 711722/0870 6075000.				
<b>Fuel:</b> 100LL- From Aeros Club, Tel: 01446 710000 Jet A1 by arrangement with; Swissport, Tel: 07388 943688 or North Air Tel: 01466 710287.			<b>Tel:</b> 01446 712562 ATC 01446 711111 Airport 01446 729319 ATIS/ Ext 3319 Internally <b>Email:</b> cardiffatc@nats.co.uk <b>Email:</b> info@cwl.aero <b>Website:</b> www.cwl.aero	

**CARDIFF CTR/CTA  
VISUAL REFERENCE POINTS (VRPs)**

VRP	NDB/DME	VOR/DME FIX
<b>Cardiff Docks (Note1)</b> N51 27.40 W003 09.10	CDF 062°M *CWA/CDF DME 7 nm	BCN 166°/17nm
<b>Clatworthy Reservoir</b> N51 04.38 W003 22.15	CDF 184°M *CWA/CDF DME 19 nm	BCN 187°/39nm
<b>Flat Holm Lighthouse</b> N51 22.53 W003 07.12	CDF 098°M *CWA/CDF DME 8 nm	BCN 166°/22nm
<b>Lavernock Point</b> N51 24.38 W003 10.23	CDF 083°M *CWA/CDF DME 6 nm	BCN 171°/20nm
<b>Llandegfedd Reservoir</b> N51 41.50 W002 58.25	CDF 038°M *CWA/CDF DME 22 nm	BCN 101°/11nm
<b>M4 Junction 24</b> N51 36.12 W002 55.53	CDF 051°M *CWA/CDF DME 20 nm	BCN 121°/15nm
<b>Minehead</b> N51 12.35 W003 28.50	CDF 205°M *CWA/CDF DME 12 nm	BCN 195°/32nm
<b>M4 Junction 36 (Services)</b> (North of Bridgend) N51 31.93 W003 34.40	CDF 314°M *CWA/CDF DME 11 nm	BCN 226°/16nm
<b>Nash Point Lighthouse</b> N51 24.05 W003 33.13	CDF 274°M *CWA/CDF DME 7 nm	BCN 210°/22nm
<b>Nash South</b> (on St. Athan C/L, 1 nm S of Nash Point) N51 22.88 W003 33.45	CDF 266°M *CWA/CDF DME 8 nm	BCN 209°/23nm
<b>Old Severn Bridge (M48)</b> N51 27.45 W003 24.18	CDF 064°M *CWA/CDF DME 29 nm	BCN 107°/24nm
<b>St Hilary TV Mast (Note 2)</b> N51 27.45 W003 24.18	CDF 328°M *CWA/CDF DME 4 nm	BCN 199°/17nm
<b>Taff Ely Wind Farm</b> N51 34.05 W003 28.27	CDF 335°M *CWA/CDF DME 11 nm	BCN 220°/12nm
<b>Wenvoe TV Mast (Note 3)</b> N51 27.60 W003 16.95	CDF 029°M *CWA/CDF DME 5 nm	BCN 183°/16nm

\* DME frequency-paired with ILS gives zero range indication with respect to the threshold of the runway with which it is associated.

**Notes:**

1. Exercise caution when routing via this VRP due to its proximity to Cardiff Heliport.
2. Exercise caution when routing via this VRP due to the nature of this lit Air Navigation Obstacle, height 754ft agl, 1161ft amsl.
3. Exercise caution when routing via this VRP due to the nature of this lit Air Navigation Obstacle, height 878ft agl, 1294ft amsl.

**See VFR Routes overleaf and at page 181.**

### Published VFR Routes to/from Cardiff

Pilots are to ensure that they are familiar with the route alignment and altitude restrictions prior to departure / entering the CTR.

#### Outbound Visual Routes

Route Designator	Exit Point	Rwy	Route	Maximum Altitude
VFR St Hilary	Bridgend	12/30	Route North of St Hilary TV mast and leave CAS to the West routing North of Bridgend at Jnct 36 VRP.	1500ft
VFR North	North	12/30	Route between the St Hilary and Wenvoe TV mast and leave CAS to the North.	1500ft
VFR Wenvoe	West Cardiff Docks	12/30	Route East of the Wenvoe TV mast and leave CAS to the North East.	1500ft
VFR Flat Holm	NE Flat Holm Lighthouse	12/30	Route North of Barry, then North of Flat Holm Island and leave CAS at the South/East zone boundary.	1500ft
VFR South	North Minehead	30	Route East of the quarry (1nm West of Cardiff Airport) and leave CAS to the South towards Minehead VRP.	1500ft

#### Remarks:

Cardiff will endeavour to remove the 1500ft restriction for flight over water ASAP.

VFR South	North Minehead	12	Route South and leave CAS to the South towards Minehead VRP.	1500ft
-----------	----------------	----	--	--------

#### Remarks:

Cardiff will endeavour to remove the 1500ft restriction for flight over water ASAP.

VFR Nash point	Nash Point	30	Route East of the quarry (1nm West of Cardiff Airport) and leave CAS to the West along the coast. over water, via Nash Point.	1500ft
----------------	------------	----	---	--------

#### Remarks:

Route normally only available when St Athan is **not** active.

VFR Nash Point	Nash Point	12	Leave CAS to the West along the coast, over water, via Nash Point	1500ft
----------------	------------	----	---	--------

#### Remarks:

Route normally only available when St Athan is **not** active.

Inbound Visual Routes are listed opposite

### Published VFR Routes to/from Cardiff

Pilots are to ensure that they are familiar with the route alignment and altitude restrictions prior to departure / entering the CTR.

#### Inbound Visual Routes

Route Designator	Exit Point	Rwy	Route	Maximum Altitude
VFR St Hilary	Bridgend	12/30	Enter CAS via Bridgend and route North of St Hilary TV mast. then as directed by Cardiff ATC.	1500ft
VFR North	North	12/30	Enter Cardiff CAS from the North between the St Hilary and Wenvoe TV masts, then as directed by Cardiff ATC.	1500ft
VFR Wenvoe	West Cardiff Docks	12/30	Enter Cardiff CAS via the Wenvoe TV mast, then as directed by Cardiff ATC.	1500ft
VFR Cardiff Docks	Cardiff Docks	12/30	Enter Cardiff CAS via Cardiff Docks, then as directed by Cardiff ATC.	1500ft
VFR Flat Holm	North of Flat Holm Lighthouse	12/30	Enter Cardiff CAS via Weston aerodrome, route North of Flat Holm Lighthouse towards Lavernock Point, then as directed by Cardiff ATC.	1500ft
VFR South	North Minehead	30	Enter Cardiff CAS from the South remaining East of the quarry (1nm West of Cardiff Airport) then as directed by Cardiff ATC.	1500ft
VFR South	North Minehead	12	Enter Cardiff CAS from the South, then as directed by Cardiff ATC.	1500ft
VFR Nash point	Nash Point	30	Enter Cardiff CAS via Nash Point, route along the coast, remaining over water, then as directed by Cardiff ATC.	1500ft

#### Remarks:

Route normally only available when St Athan is **not** active.

VFR Nash Point	Nash Point	12	Enter Cardiff CAS via Nash Point, route along the coast, remaining over water until East of the quarry (1nm West of Cardiff Airport), then as directed by Cardiff ATC.	1500ft
----------------	------------	----	--	--------

#### Remarks:

Route normally only available when St Athan is **not** active.

# CARDIFF VFR ROUTES

