

## EGCJ

N53 47.03 W001 13.04

SHERBURN IN ELMET

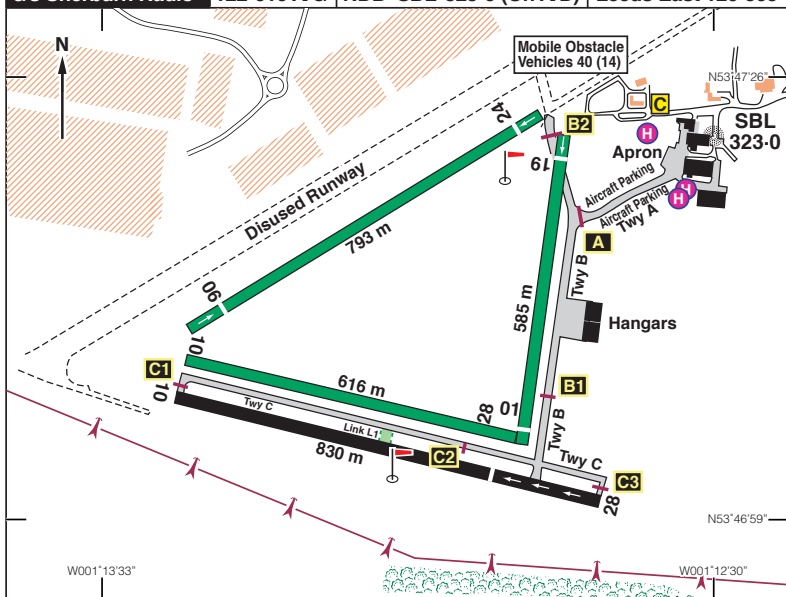
26ft AMSL

5.5 nm W of Selby, Yorks.

POL 112-10 086 31-5. GAM 112-80 342 31-7

LBA 402-5 107 16-2

c/s Sherburn Radio 122-610 A/G NDB 'SBL' 323-0 (On A/D) Leeds East 126-505



| Rwy   | Dim(m) | Surface | TORA(m)          | LDA(m)           | Lighting                                |
|-------|--------|---------|------------------|------------------|---|
| 01/19 | 585x18 | Grass   | 01-553<br>19-553 | 01-553<br>19-521 | Nil<br>Nil                              |
| 06/24 | 793x18 | Grass   | 06-723<br>24-696 | 06-676<br>24-703 | Nil<br>Nil                              |
| 10/28 | 830x18 | Tarmac  | 10-616<br>28-799 | 10-616<br>28-616 | Thr Rwy APAPI 4° RH<br>Thr Rwy APAPI 4° |
| 10/28 | 616x18 | Grass   | 10-616<br>28-616 | 10-616<br>28-616 | Nil<br>Nil                              |

**Op hrs:** 0900-SS. (0800-1800).**Landing Fee:** Single £10.00, Multi £20.00. Nil with minimum fuel uplift.**Customs:** 24 hrs PNR.**Hangarage:** Limited.**Maintenance:** Sherburn Engineering Ltd. (Mon-Fri).**Remarks:** Operated by Sherburn Aero Club Ltd. The Aerodrome, New Lennerton Lane, Sherburn-in-Elmet, Nr Leeds, LS25 6JE. PPR.

Within the circuit, pilots are to avoid overflying all villages and remain well clear of them at all times when flying within the ATZ.

Back tracking not permitted on active runways.

Continued

**Remarks:** (continued)

QFE will be passed by A/G, aerodrome elevation 26ft.

On arrival/departure, avoid overflying the villages to the North: Little Fenton, Barkston Ash and Biggin below 2000ft.

Mandatory Noise Abatement Procedures - Aircraft must not overfly the villages of Sherburn-in-Elmet, South Milford, Lumby, Monk Fryston and Hambleton.

**Inbound:**

Initial contact with Sherburn Radio (A/G) 122•610 when within 5 nm of the ATZ.

- Inbound traffic route inbound from the direction of:

From S, SW, W

**Ferrybridge**

From S, SE, E, NE, N

**Selby**

From N, NW, W

**A1/M1 Intersection**

- Fixed wing acft join overhead at 2000ft QFE and descend with a standard overhead join for the runway in use.
- Helicopters to arrive not above 700ft QFE, and when it is necessary to cross the active runway, to do so at midpoint not below 200ft AAL.
- Arriving acft must remain clear of the Leeds East Airport ATZ.

**Outbound:**

Initial contact with Sherburn Radio (A/G) 122•610.

- Outbound traffic whilst within the Sherburn ATZ, initially route towards:

From S, SW, W

**Ferrybridge**

From S, SE, E, NE, N

**Selby**

From N, NW, W

**A1/M1 Intersection**

- Fixed wing acft to depart the circuit remaining clear of dead side and local villages at all times.
- Traffic to depart the circuit and ATZ at circuit altitude:
  - a) on runway heading
  - b) extended cross wind as required
  - c) on completion of the downwind leg, as required
- Helicopters to depart not above 700ft QFE, and when it is necessary to cross the active runway, fly across at 90° the midpoint.
- Departing acft shall remain clear of the Leeds East Airport ATZ.

**Note:** Acft may at times depart from the overhead at 2000ft for training purposes.

**Caution:** Power cables 32ft aal cross final approach to Rwy 01, 258m from Thr.

**Warnings:** Mast, 134ft amsl (111ft agl), 830m to the East and South of Rwy 28 Thr and left of the extended runway approach centreline.

**Restaurant:** Club facilities open all day.

**Fuel:** 100LL, Jet A1, UL91.

**Tel:** 01977 682674.

**Email:** flightdesk@sherburnaeroclub.com

**Website:** www.sherburnaeroclub.com

# SHERBURN IN ELMET MANDATORY NOISE ABATEMENT PROCEDURES

Except in emergency, or as advised by Sherburn Radio,  
the following procedures are to be adhered to.

