

EGEC

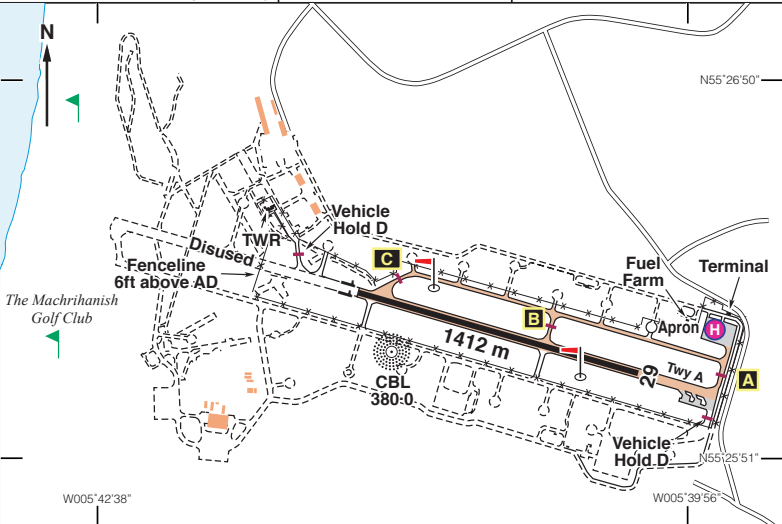
N55 26.25 W005 41.28 **CAMPBELTOWN** 42ft AMSL

3 nm WNW of Campbeltown.

TRN 117-50 286 31-8

c/s Campbeltown Information 125-905 AFIS

NDB 'CBL' 380-0 (On A/D) VOR/DME MAC 116-00



Rwy	Dim(m)	Surface	TORA(m)	LDA(m)	Lighting
11/29	1412x46	Concrete/ Asphalt	11-1412 29-1412	11-1412 29-1412	† Thr Rwy APAPI 3° † Thr Rwy APAPI 3.5°

† Thr and Rwy portable electric during night hours only.
Op hrs: PPR. Mon-Fri 0820-1740. Sun (May - Sep) 1650-1800.
 and by arrangement with AD operator (HIAL).

Landing Fee: Private light aircraft up to 3000 kg MTWA - £22.30 inc, VFR and booked in advance.

Hangarage: Nil. **Maintenance:** Nil. **Customs:** Nil.

Remarks: Operated by Highlands and Island Airport Ltd., Campbeltown Aerodrome, Campbeltown, Argyll PA28 6NU. All flights PPR. Non-radio aircraft not accepted. No ground signals. Prior to commencing the procedure, pilots are to broadcast on AFIS 125-905 MHz with flight details and intentions.

Caution:

- Deer hazard.
- Bird activity may be seasonally high. (Especially on Rwy 29 approach)
- High ground, 1159ft amsl 135°T/4 nm and 1465ft amsl 230°T/5 nm.
- Perimeter fence obstruction at western end of runway.

Warnings:
 Pilots are reminded of the close proximity of disused parallel taxiway to the S of Rwy 11/29, which is outside of the airport boundary fence and not available for landing/ taxiing purposes.

Fuel: Nil. **Tel:** 01586 553 797 AFIS
Fax: 01586 552 620 AFIS
Website: www.hial.co.uk/campbeltown-airport/