

EGSU

DUXFORD

126ft AMSL

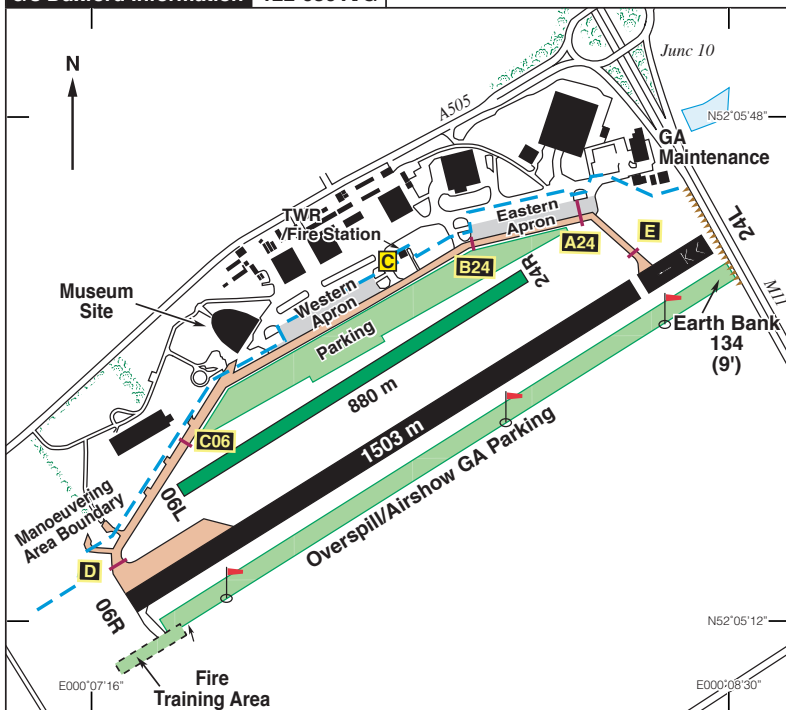
N52 05.45 E000 07.92

8 nm S of Cambridge.

BPK 117-50 023 22-3

LAM 115-60 001 26-7

c/s Duxford Information 122-080 A/G



Rwy	Dim(m)	Surface	TORA(m)	LDA(m)	Lighting
06R/24L	1503x32	Asphalt	06-1199 24-1199	06-1199 24-1199	Nil Nil
06/24	880x25	Grass	06-880 24-880	06-880 24-880	Nil Nil

Op hrs: Late Oct to Mid March – 1000-1600 daily.
Mid Mar to late Oct – 1000-1800 daily. (All times local)

Landing Fee: Start at £18.90 for singles.
All fees can be found on the IWM Duxford website.

Hangarage: Nil. **Customs:** 24 hrs PNR.

Maintenance: Aircraft Restoration Company, Tel: 01223 835313.

continued

Remarks: Licensed aerodrome administered by the Imperial War Museum. Strictly PPR at all times by phone 01223 833376. All pilots must obtain a briefing prior to arrival by Duxford Tower. Training flights are by arrangement only. Depended on traffic levels, PPR for circuits may not be granted. Aerodrome may close during adverse weather conditions. Special Rules apply for Event Days – see relevant AIC. Visiting A/C must be insured in accordance with EU Regulation (EC) 785/2004. Art 7. Policies must include (where applicable) passenger legal liability insurance cover. Policies must also include Extended Coverage Endorsement (Aviation Liabilities) AV52E. Simultaneous runway operations or land afters are not authorised. Joins for visiting A/C should be via the downwind leg for the southern circuit. There are no overhead, deadside or crosswind joins. All visiting traffic should join via the downwind leg.

Circuit height is 1000ft QFE. If operating to the North of Duxford, outside the Duxford ATZ, you are advised to establish communications with Cambridge APP 120•965. Taxiways are suitable for A/C with a maximum wingspan of 40m. Gate code for the Eastern Apron: 1940 (GA Parking). Circuit directions for Visitors: LH for RWY24, RH for RWY 06

Caution: High performance aircraft often join via a 'run and break' manoeuvre into the Northerly circuit. Priority will be given to such aircraft. Fowlmere airfield is situated to the West of Duxford. Due to the close proximity of the aerodromes care should be taken whilst operating in the vicinity. For traffic departing Duxford RWY 24, there should be no right turn until passed Fowlmere or at 2000ft QNH. It is advised that all traffic inbound and outbound from Duxford pay close attention to surrounding Airspace. NATS/CAA 'take two' advice is encouraged to avoid infringements.

Noise Abatement: Avoid all built up areas in and around the Duxford ATZ, including Duxford Village and all villages to the North of Duxford. Avoid Linton Zoo (5nm East up to 2500ft), the Bird Sanctuary and the GVS in the circuit pattern.

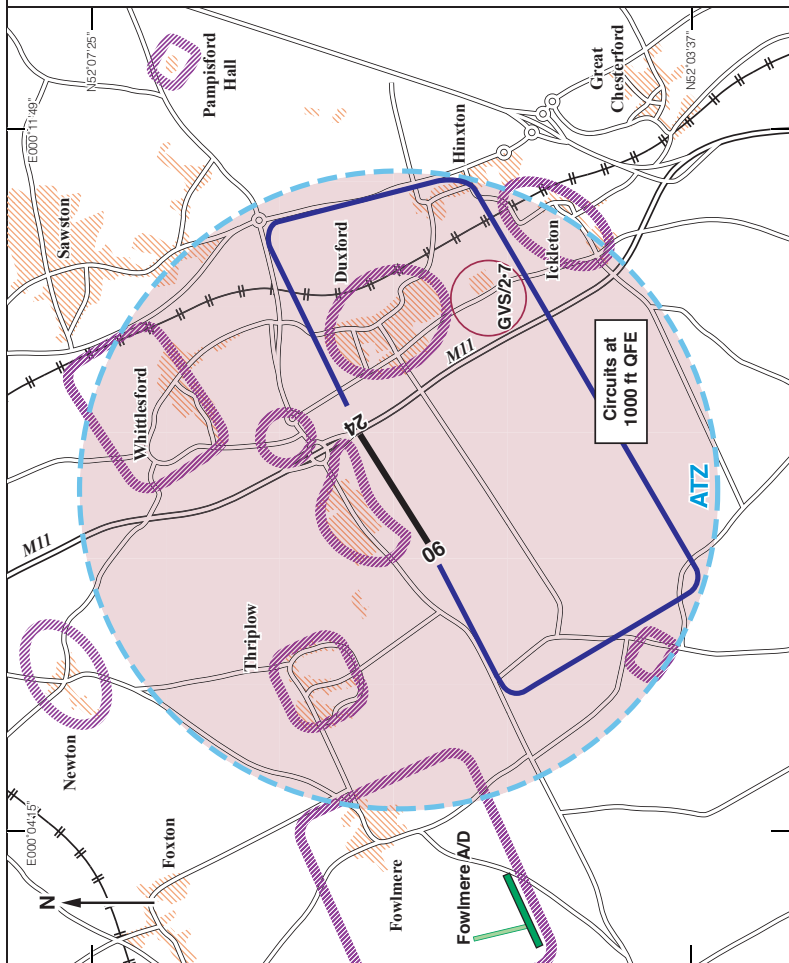
Restaurant: Usually available. Check IWM Duxford website for more information. Further details online can be found on our 'Information for Pilots' page on the IWM Duxford website.

Fuel: 100LL, Jet A1. As per AD hours. By arrangement outside these hours.

Tel: 01223 833376 AFIS and PPR.
01223 835000 Ext 7236 Switchboard
Fax: 01223 830410 AFIS.
Email: airtraffic@iwm.org.uk
Website: www.iwm.org.uk



Duxford - Circuits



Circuits at 1000ft QFE
LH on Rwy 24, RH on Rwy 06 for visitors.