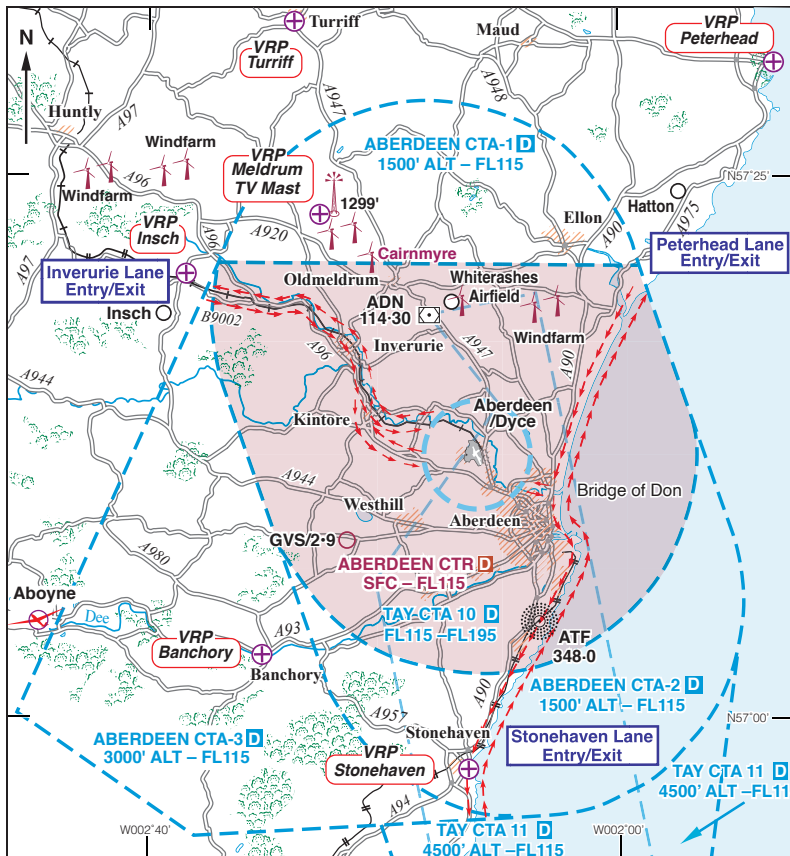


# ABERDEEN CTR/CTA



**Entry/Exit Lanes** Peterhead Lane, Stonehaven Lane and Inverurie Lane. All lanes are 3 nm wide. The entry/exit lanes have been established to permit the operation of aircraft to and from Aberdeen/Dyce Airport subject to the rules governing VFR flight in Class D controlled airspace and under the following conditions:

1. Clearance must be obtained from Aberdeen ATC before entering the lane; non-radio aircraft must obtain clearance prior to take-off.
2. Aircraft must remain clear of cloud and in sight of surface, not above 2,000ft Aberdeen QNH (unless authorised by Aberdeen ATC).
3. An acft using a lane shall keep the centre line on its left unless otherwise instructed by ATC.
4. Pilots are responsible for maintaining adequate clearance from the ground or other obstructions.
5. Model aircraft flying at 'Hareross', N57 05.25 W002 09.20, approximately 1.5 nm NW of Portlethen up to 400ft agl, daily during daylight hours.

**Note:** 1. Aircraft using the Inverurie Lane will be required to route via the A96 Highway between Aberdeen Airport and Kintore when departing Rwy 16 or arriving Rwy 34.  
 2. When Rwy 34 in use, pilots using the Stonehaven Lane should expect an ATC clearance to route off-shore not above 1000ft QNH after passing the Bridge of Don.