

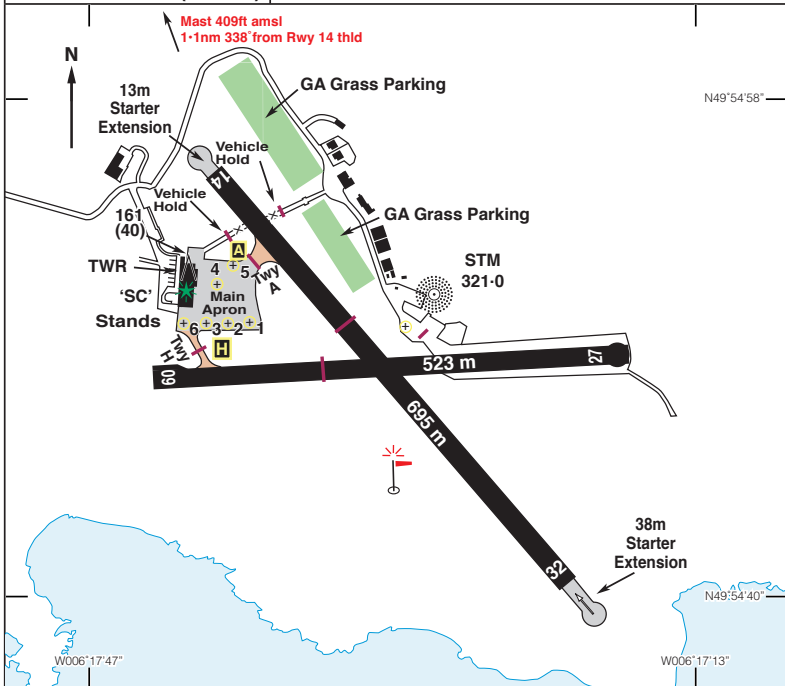
EGHE

N49 54.80 W006 17.50 **SCILLY ISLES/St. Mary's** 121ft AMSL

1 nm E of Hugh Town. **LND 114·20 243 28·7**

c/s Scillies APP/TWR 124·880 c/s Scillies Radio 124·880 (Outside ATS hours)

NDB 'STM' 321·0 (On A/D)



Rwy	Dim(m)	Surface	TORA(m)	LDA(m)	Lighting
-----	--------	---------	---------	--------	----------

09/27	523x18	Asphalt	09-522	09-522	Thr Rwy PAPI 3.5° Ap Thr Rwy PAPI 3.5°
14/32	695x23	Asphalt	14-622	14-603	Thr Rwy PAPI 3.5°# Thr Rwy PAPI 3.5° IBn 'SC' Gn

Rwy 14 PAPI signals are visible to the East of runway extended centreline where normal obstacle clearance is not guaranteed. They should only be used when aircraft is aligned with the runway.

continued