

EGPA

KIRKWALL

58ft AMSL

N58 57.48 W002 54.03

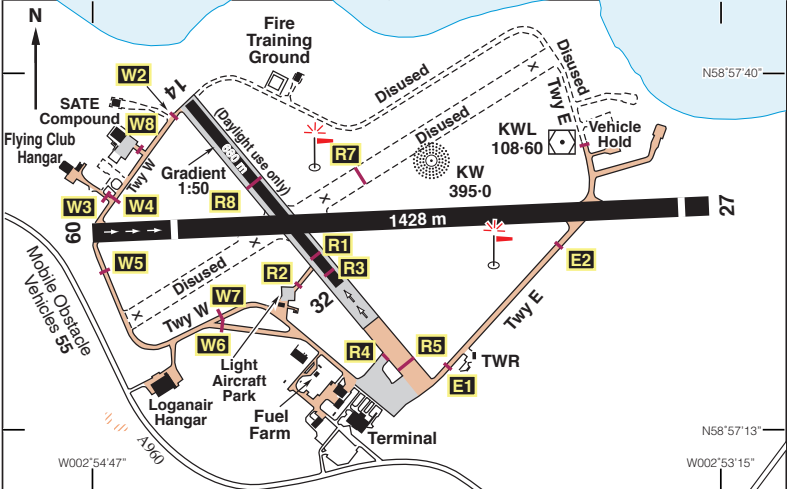
2.5 nm SE of Kirkwall.

WIK 113-60 013 30-7

c/s Kirkwall APP/TWR/AFIS 118-305 ATIS 108-60 (VOR 'KWL')

VOR/DME 'KWL' 108-60 (On A/D) NDB 'KW' 395-0 (On A/D)

ILS/DME Rwy 09 (092°M) 'I ORK' 110.10 ILS/DME Rwy 27 (272°M) 'I KIR' 110-10



Rwy	Dim(m)	Surface	TORA(m)	LDA(m)	Lighting
09/27	1428x46	Asphalt	09-1428† 27-1368†	09-1268 27-1326	Ap Thr Rwy PAPI 3.5° Ap Thr Rwy PAPI 3.5°
† 14/32	680x18	Asphalt	14-560 32-680	14-560 32-560	Nil Nil

† Rwy 14/32 available for daylight use only. Rwy 14 - Down Gradient 2% over first 550m.  
 † Take-off: Rwy 09 from intersection with Rwy 14/32 - TORA 972m  
 † Take-off: Rwy 27 from intersection with Eastern Twy - TORA 1050m

**Op hrs:** PPR. Mon-Fri 0715-2000, Sat 0715-1745, Sun 0900-2000 O/T by arrangement.

**Landing Fee:** Private light aircraft up to 3000kg MTWA - £19.56 inc, VFR and booked in advance.

**Hangarage:** Ltd. **Maintenance:** Loganair, Tel: 01856 873 907. **Customs:** PNR.

**Remarks:** Operated by Highland & Island Airports Ltd. PPR to all flights. Height of landing area varies considerably, elevation at aerodrome is 58ft amsl. All grass areas outside the strips are unserviceable owing to open drains and A/D is subject to water-logging. Rwy 09/27 surface is grooved. For details on the HIAL Indemnity scheme go to [www.hial.co.uk](http://www.hial.co.uk). A public road passes under the take-off and climb path of Rwy 27. A height allowance of 15ft to clear a vehicle on this road must be applied to performance calculations for departures from this runway. High visibility clothing mandatory on the manoeuvring area.

**Warnings:** Bird hazard on approach/climb out paths.

**Restaurant:** Light Refreshments. **Car Hire:** W. R. Tullock. 01856 875500.

**Fuel:** 100LL, Jet A1. Tel: 01856 872415. **Tel:** 01856 872421 A/D. 01856 886205 ATC. 01856 878476 ATIS. **Fax:** 01856 875051 ATC.