

# EGLD

## DENHAM

249ft AMSL

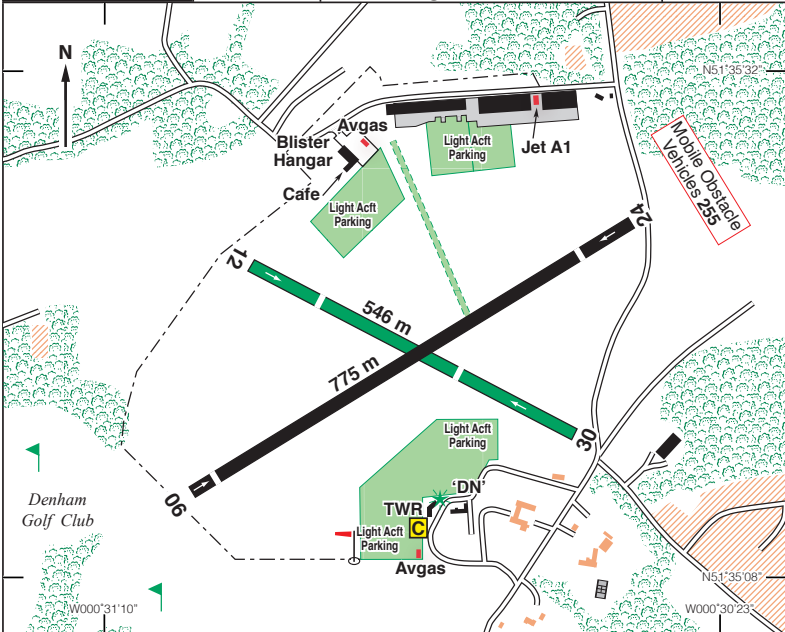
N51 35.30 W000 30.78

7.5 nm N of Heathrow Airport.

BNN 113-75 170 8-4

LON 113-60 344 6-3

c/s Denham Radio 130-730 A/G Farnborough Radar 132-800 LARS



Rwy	Dim(m)	Surface	TORA(m)	LDA(m)	Lighting
06/24	775x18	Asphalt	06-686 24-728	06-706 24-670	Thr Rwy APAPI 4.5°† Thr Rwy APAPI 4.5°
12/30	546x18	Grass	12-363 30-432	12-419 30-363	Nil Nil IBn 'DN' Gn

† APAPIs on Rwy 06 are visible to the left of extended centreline where normal obstacle clearance is not guaranteed. Ignore signals until aligned with runway.

**Op hrs:** PPR by Telephone or Email - **before departure.**  
Winter: 0800-1800. Summer 0800-2000; and by arrangement.

**Landing Fee:** Up to 1000 kg £15.00; 1001-1500 kg £18.00. All inclusive of VAT. Other fees on request.

**Customs:** EU 4 hrs PNR, non EU 24 hrs PNR. Special Branch 12 hrs notice.

**Hangarage:** By arrangement.

**Maintenance:** Fixed wing: London Denham Aviation Ltd, 01895 832335  
Rotary wing: HQ Aviation Ltd, 01895 833373, AS Aerospace Ltd, 01895 831694

*continued*

**EGLD**

N51 35.30 W000 30.78

**DENHAM**

249ft AMSL

**Remarks:** Operated by Bickerton's Aerodromes Ltd., Denham Aerodrome, Denham, Bucks, UB9 5DE. Aerodrome situated within the London CTR (Class 'D' Controlled Airspace), see chart overleaf.

Non-radio aircraft not accepted without permission from AD operator.

Following heavy rain, snow melt etc, some parts of the aerodrome may not be suitable for taxiing. Contact the Duty Officer for information.

**Arrivals, Departures and Circuits:**

There is no overhead join. Max alt 1000ft AMSL See website for briefing, joining videos and photos. Use transponder On with altitude information.

Circuit altitude 1000ft AMSL.

Rwy 24 RH, Rwy 06 LH, Rwy 12/30 variable.

**Circuit Joining & Circuits:**

- descend to circuit Alt, report at the VRP and establish a long base leg;
- look out for acft downwind, joining traffic must give way to circuit traffic;
- Pilots should not orbit in the circuit;
- Use available equipment to aid conspicuity; landing light on; strobes on transponder Alt;
- Pilots should give position reports downwind and final;

**Departures:**

- After take-off, maintain Rwy heading, turn onto crosswind and climb to circuit Alt;
- Extend crosswind leg to the appropriate VRP;
- Pilots in receipt of a clearance from Heathrow Radar or Northolt Approach may deviate in accordance with their clearance;

**Noise Abatement Procedures:**

- Arrival Rwy 06: report at VRP St Giles, establish a long base leg. Overfly fields to avoid most houses in Chalfont St Peter and Gerrards Cross (where safely possible)
- Arrival Rwy 24: report at VRP Maple Cross, establish a long base leg. Overfly the lakes (where safely possible);
- Departure Rwy 06: after take-off maintain runway heading until past caravan site on the left, then turn left over the lakes (where safely possible);
- Departure Rwy 24: after take-off maintain runway heading until past houses on the right, then turn right before the A413 (where safely possible);
- extend crosswind leg out of the circuit to VRP before turning on track.

**Visual Reference Points (VRPs)****VRP**

**Maple Cross**-Eastern end of spur road to M25 Jnct 17  
N51 37.77 W000 30.25

**St. Giles**-Xroads on A413 to the E of Chalfont St Giles  
N51 38.03 W000 34.02

**VOR/DME**

BNN 164°/6 nm

BNN 187°/6 nm

**Warnings:** Powerlines, 369ft AMSL, 270°T, running north/south, 0.6nm from ARP.

A public road crosses final approach to Rwy 24, 100m from displaced threshold.

**Restaurant:** Biggles licensed Restaurant located south side near Tower, closed Mondays, Tel: 01895 834241.

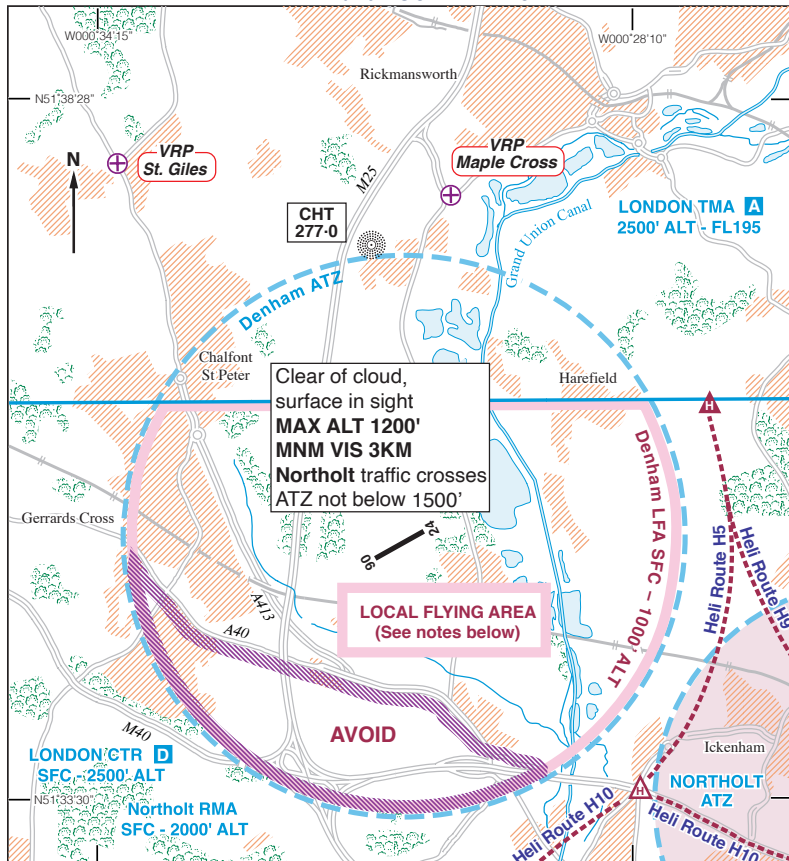
Crew Room, licensed cafe located north side by Blister Hangar, open daily, Tel: 01895 834568.

**Taxis:** Carline, Tel: 01895 247247.

**Fuel:** 100LL, Jet A1+AL48  
0900-1730 or by arrangement).

**Tel:** 01895 832161 Twr; 060 Admin  
**Fax:** 01895 833486 Twr/ 831161 Admin  
**Email:** tower@egld.com  
**Website:** www.egld.com

## DENHAM ATZ and LOCAL FLYING AREA



### DENHAM LFA

In the Local Flying Area (the part of the ATZ in London CTR) flights without compliance with IFR requirements may take place subject to the following conditions:

1. Aircraft to remain clear of cloud with the surface in sight.
2. Maximum altitude 1200ft AMSL, with a minimum flight visibility of 3 km.
3. The area to the South of the A40 is to be avoided at all times.

- Notes:**
1. Pilots are responsible for providing their own separation. Joining aircraft should give way to circuit traffic.
  2. Flights to the East, South or West through London CTR require SVFR clearance. Pilots inbound with SVFR clearance must contact Denham Radio before entering the ATZ and must give way to circuit traffic. If necessary, keep clear of the ATZ, leave the CTR and follow the published joining procedures.