

**EGTR**

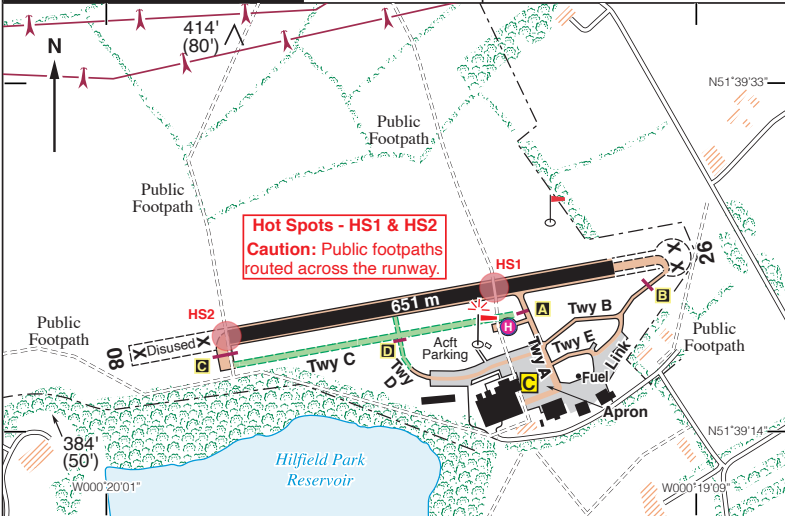
**ELSTREE**

332ft AMSL

2.5 nm E of Watford.  
North side of Hilfield Park Reservoir.

**BPK 117-50 235 9-9. BNN 113-75 117 9-4**  
**LAM 115-60 272 17-9**

**c/s Elstree Information/Radio 122.405 AFIS/AG**



Rwy	Dim(m)	Surface	TORA(m)	LDA(m)	Lighting
08/26	651x20	Asphalt	08-651 26-651	08-651 26-651	Rwy Rwy LITAS 4.5° IBn 'EL' Gn/ABn Wh

174m paved area west of thld 08 is not available to acft requiring a licensed A/D.  
128m paved area to the east of thld 26 is not to be used for take-off or landing.

**Op hrs:** 0900-2000 or SS whichever is earlier.  
Mandatory PPR and pilot brief available at <http://www.londonelstree.com>  
Aerodrome also available at other times by arrangement.

**Landing Fee:** Please refer to website. <http://www.londonelstree.com>

**Customs:** EU 4 hrs PNR. Non EU 24 hrs PNR. Special Branch 12 hrs Notice.

**Hangarage:** Available.

**Maintenance:** London Elstree Aviation, Tel: 020 8207 3702, Fax: 0870 1231991.

**Remarks:** Operated by Aldenham Aviation LLP & Montclare Shipping Co. Ltd, Elstree Aerodrome, Borehamwood, Herts, WD6 3AR.  
Use is subject to terms and conditions which restrict liability; details available at the website, <http://www.londonelstree.com>

*continued*

**Remarks (continued):**

Standard overhead join. Variable circuits.

Fixed wing: 1000ft QFE;

Helicopters: 750ft QFE.

Helicopter Arrival/Departure Routes and Entry/Exit Points - See page 289.

Helicopter circuits and training area to the North of the runway.

Heavy helicopters operating, caution, wake turbulence.

Only Rwy 26 is available for aircraft requiring a licensed aerodrome at night.

High visibility clothing mandatory airside.

Noise Abatement departure chart, see overleaf.

**Visual Reference Points (VRPs):**

Canal Bend N51 39.03 W000 25.62;

Golf Course N51 40.00 W000 12.93.

**Warnings:** Distance between taxiway centreline and obstructions is only 10.5m in many places, and distance between parked aircraft on the apron is only 17m.

Taxy with extreme caution.

Pilots are to exercise caution when operating on the helipad due to the proximity of other helicopters and airfield furniture.

Helicopters may use the helipad provided they have procedures in place to allow safe operations and for public transport flights are compliant with company operating manuals.

Northern boundary of London CTR is 3 nm south of the airfield.

**Caution:** Pylon cables, 95ft aal running east-west approximately 0.3 nm North of Rwy 08/26.

Pylon cables, running North - South approximately 0.21 nm from the threshold of Rwy 08.

**Restaurant:** The Aerodrome Cafe (open 0800-1900) Tel: 020 3154 4383.

**Car Hire:** Hertz, Tel: 01923 253169, Enterprise, Tel: 01923 800300.

**Taxi:** Tel: 01923 469803.

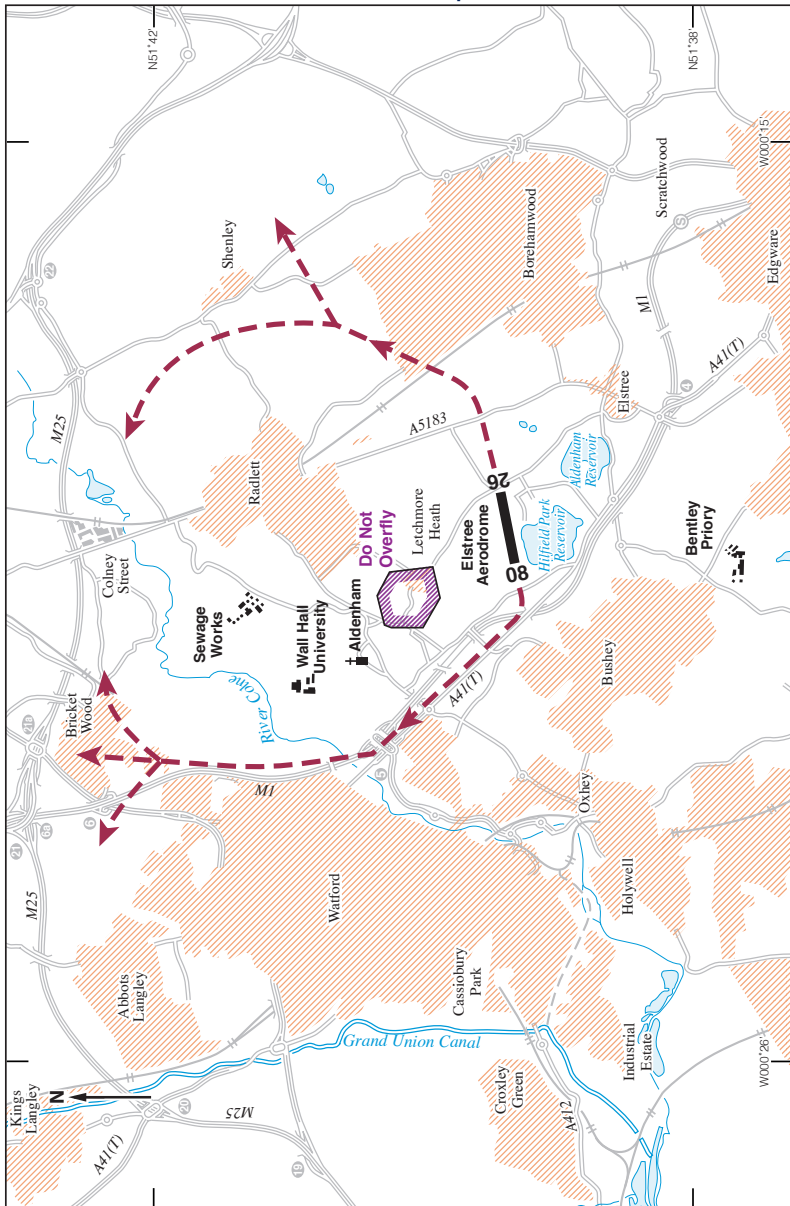
**Pooleys Pilot Shop:** Tel: 020 8207 3749.

**Fuel:** 100LL, Jet A1 (Only AL48).  
All major cards accepted.

**Tel:** 020 8953 7480 Tower/Admin  
**Mob:** 07434 514848 Ground Crew  
**Email:** tower@londonelstree.com  
**Website:** <http://www.londonelstree.com>

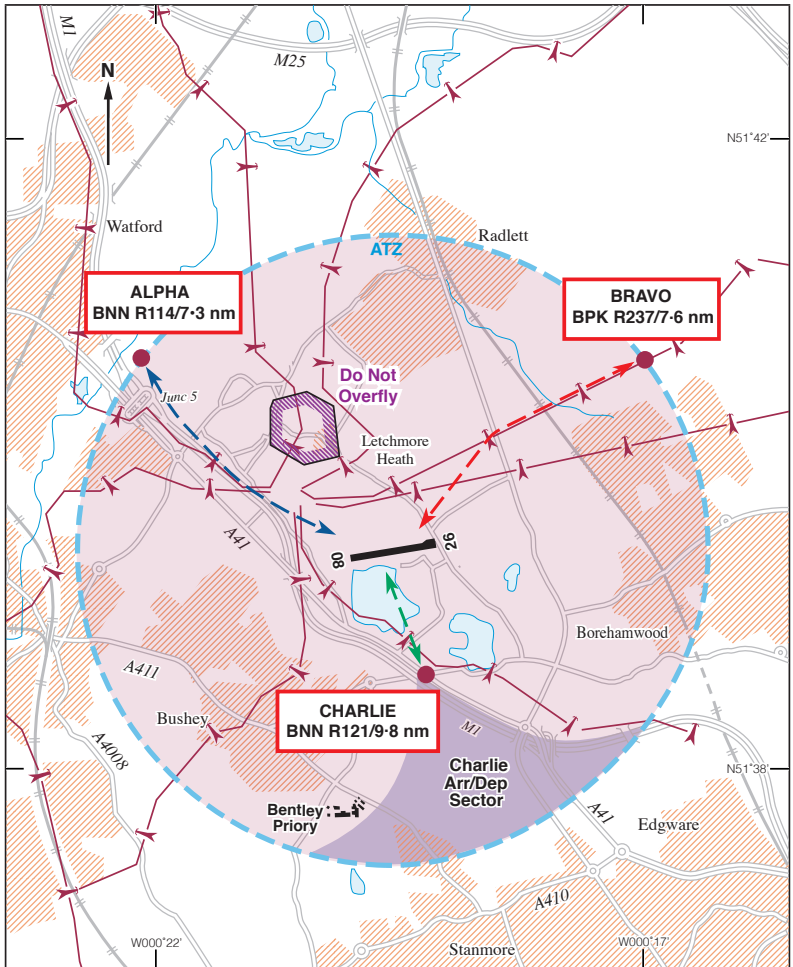
# ELSTREE

## Noise Abatement Departures



# ELSTREE

## Helicopter Arrival/Departure Routes and Entry/Exit Points



Helicopters are to arrive and depart from the ATZ via specific entry/exit point. Check with the aerodrome operator prior to flight.

Note: Point Charlie - request clearance for Charlie Sector and report at Point Charlie (A41 Roundabout).

Helicopter Routes are to be flown at 500ft agl and helicopters are to position to the northern grass.

Circuit training permitted to based helicopters only.

Circuit height 750ft QFE to the North of aerodrome.