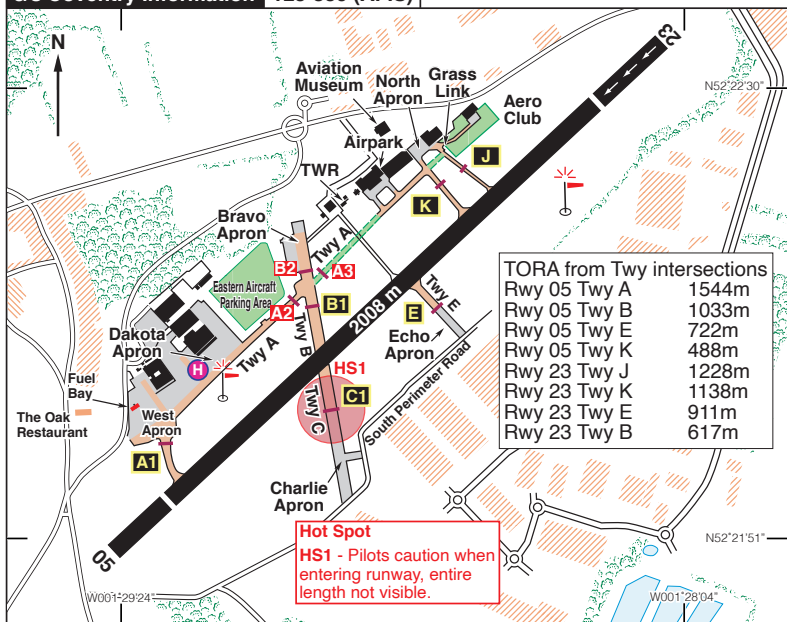


EGBE

N52 22.19 W001 28.78 **COVENTRY** 267ft AMSL

3 nm SSE of Coventry. **HON 113-65 083 6-8. DTY 116-40 310 17-6**

c/s Coventry Information 123-830 (AFIS)



Rwy	Dim(m)	Surface	TORA(m)	LDA(m)	Lighting
05/23	2008x46	Asphalt	05-1615 23-1825	05-1615 23-1615	Ap Thr Rwy PAPI Ap Thr Rwy PAPI

Op hrs: Tue-Sat 0900-1700, Helimed traffic only 0830-0900.
 Strictly PPR for all movements by www.egbe-flights.com (primary).
 Tel: 02476 511738 (only if website unavailable).

Landing Fee: 0-1000kg £15, Above 1001kg 0.015 per kilo (All including VAT)
 Circuit/touch and go 50% of landing fee.

Hangarage: Available. **Customs:** Available by prior notice.

Maintenance: Aerotech Aircraft Maintenance Tel: 02476 306888.

Remarks: Operated by Coventry Airport Ltd, Coventry Airport, Rowley Road, Coventry CV3 4FR.

Due to the complexities of adjacent controlled airspace, pilots are reminded to ensure that their flight remains clear of the Birmingham CTR/CTA unless ATC clearance is issued.

Base of Birmingham CTA 1500ft QNH (1233ft QFE). Pilots must remain outside of controlled airspace, unless cleared to enter by Birmingham ATC.

The portion of Coventry's ATZ inside the Birmingham CTA is under the direct control of Birmingham ATC and not Coventry ATS.

continued

Remarks (continued):

Aircraft in comms with Coventry ATS may be allocated a conspicuity squawk of 0420. Aircraft must not select this squawk unless instructed to do so by ATS.

Aircraft remaining in the circuit will be allocated a conspicuity squawk of 7010.

Aircraft must not select this squawk unless instructed to do so by ATS.

Allocation of either squawks does not constitute any radar service.

Non radio aircraft not accepted. In the event of an emergency and radio failure with no other option than to land at Coventry, remain outside CAS and squawk 7600 for Birmingham.

All Training flights by prior booking with ATS.

Circuit height: 1000ft aal; circuits normally RH on 05, LH on 23.

Helicopter circuits at 700ft aal.

Apron parking - as advised by ATS.

Handling:

All operators of non based aircraft over 3 tonnes MTOW require handling.

Operators are to contact the Handling Agent.

Handling Agent:

Coventry Airport Ltd Tel: 02476 308601. Email: handling@coventryairport.co.uk

Noise Abatement:

All pilots should avoid overflight of the noise sensitive areas of Binley Woods and Ryton-on-Dunsmore (05 departures, 23 arrivals) and Stoneleigh (05 arrivals, 23 departures).

Warnings:

Turbulence may occur on final approach to Rwy 23 during strong south westerly winds as aircraft cross the eastern bypass (Tollbar) roundabout.

Helicopter activity at Walsgrave Hospital helipad situated North of Rwy 23 final approach approximately 3.5 nm from touchdown.

Radio controlled aircraft activity 3 nm to East, 0.5 nm SE of Wolston Village.

Intensive bird activity to the Southern AD boundary.

Large gull activity at landfill site 1•2 nm SE of AD.

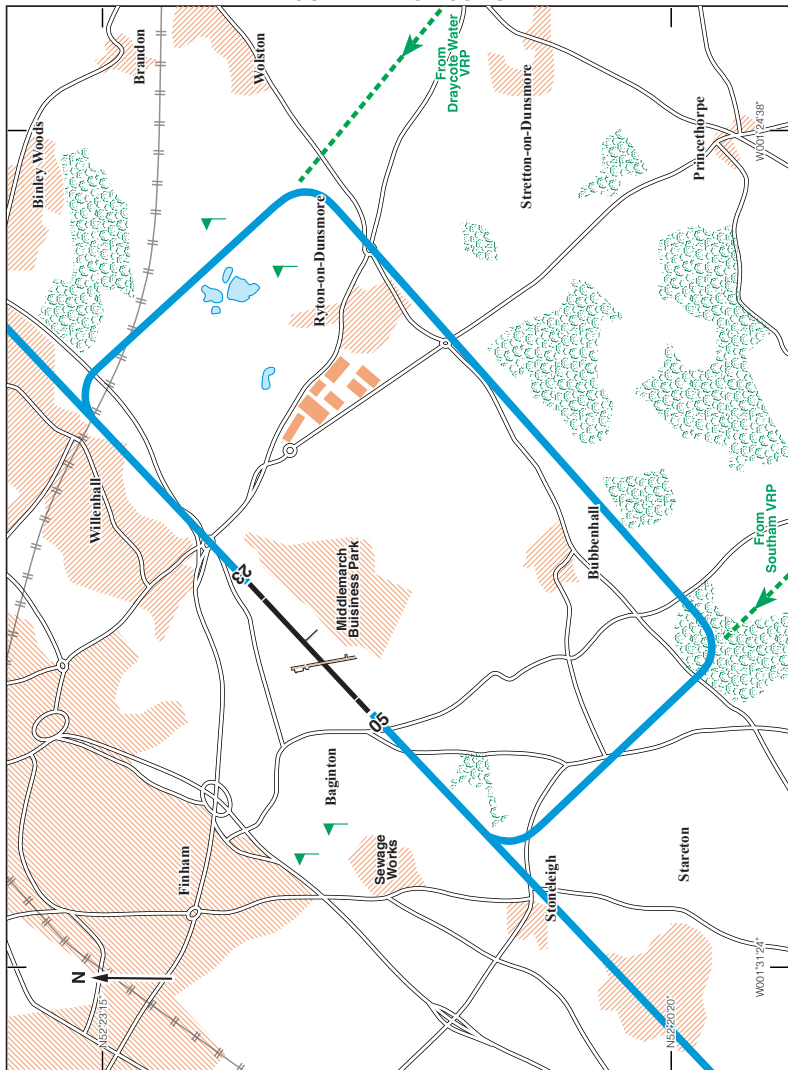
Restaurant: The Oak Restaurant. Licensed premises within walking distance.

Tel: 02476 518855.

Disabled facilities: On booking in, if pilots request assistance they will be parked in a suitable location.

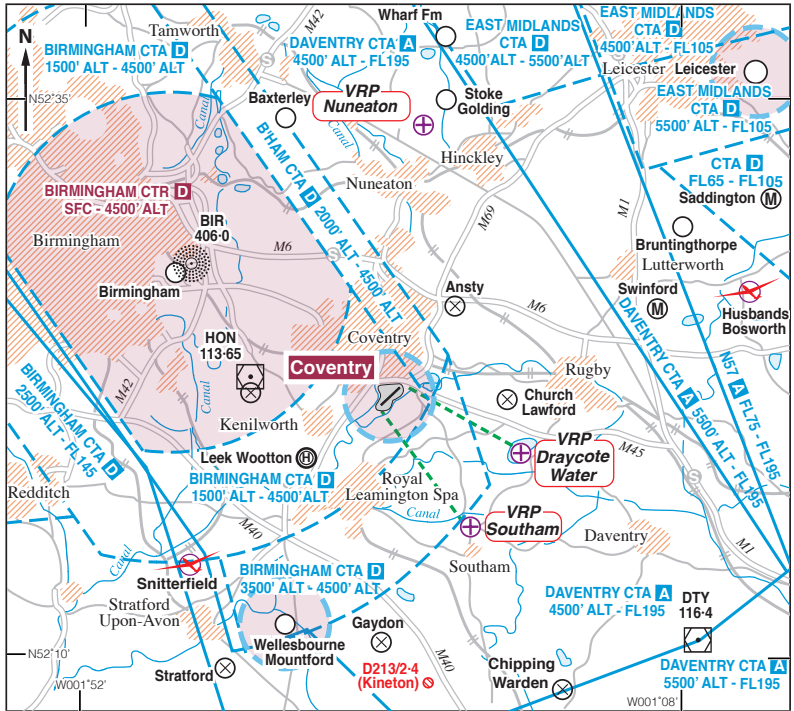
In addition if pilots wait with their aircraft, the ground crew will come to the aircraft to take landing fees and help guide them to the restaurant or museum as required.

COVENTRY CIRCUITS



Arrivals: Due to the proximity of Birmingham's controller airspace (CTA2) over the airport, overhead joins are not possible unless ATC clearance is issued. To join for Rwy 23, route to Draycote Water VRP and join on left base giving way to circuit traffic as appropriate. For Rwy 05, route to Southam VRP and join on right base giving way to circuit traffic as appropriate. Straight in approaches are available on request, giving way to circuit traffic as appropriate.

COVENTRY VISUAL REFERENCE POINTS (VRPs)



VRPs:

Southam	N52 16.35 W001 23.07
Draycote Water	N52 19.57 W001 19.58
Nuneaton (Disused A/D)	N52 33.90 W001 26.88

Fuel: 100LL, Jet A1.
 Visa, Mastercard, Multiservice,
 AMEX, AVCARD, UVAir, Colt,
 AirBP, World Fuel Service.

Tel: 07904 639092 Handling (Mobile).
 02476 308 601 Handling.
Email: ats@coventryairport.co.uk
Website: www.coventryairport.co.uk