

EGCM

N53 50.07 W001 11.72

LEEDS EAST AIRPORT

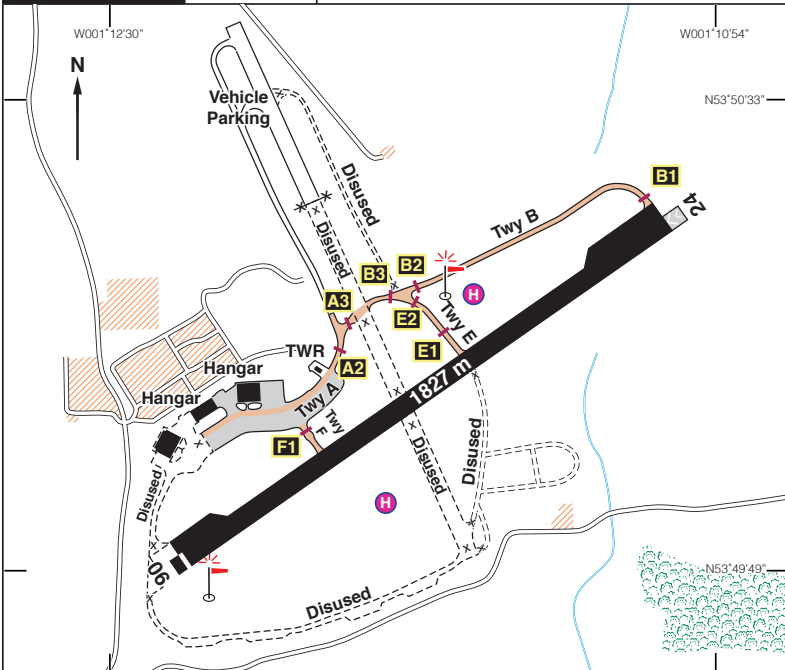
29ft AMSL

4 nm SE of Tadcaster.

OTR 113-90 283 39-7

POL 112-10 080 32-8

c/s Fenton Radio 126-505 A/G



Rwy	Dim(m)	Surface	TORA(m)	LDA(m)	Lighting
06/24	1827x46	Asphalt/ Concrete	06-1799 24-1710	06-1710 24-1710	Ap Thr Rwy PAPI 3° Ap Thr Rwy PAPI 3°

Op hrs: PPR. 01 Apr-31 Oct 0700-1700z. 01 Nov-31 Mar 0800-1700L. **ATZ: Op Hrs.**

Landing Fee: See www.leedseastairport.co.uk **Customs:** On request.

Hangarage: On request. **Maintenance:** Nil.

Remarks: Operated by Makins Enterprises. Not available to acft unable to communicate with the Tower. A public road crosses final approach to Rwy 06.

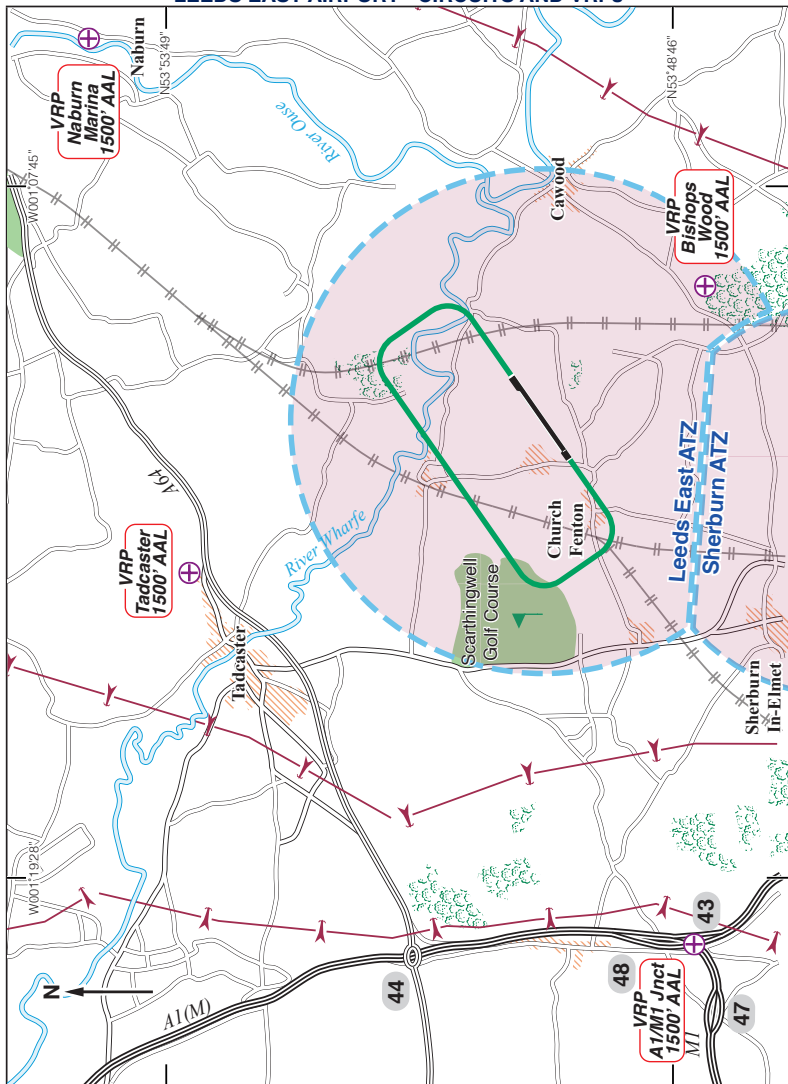
Circuits: Fixed wing at 1000ft QFE, Rwy 24 RH, Rwy 06 LH.
Helicopters at 700ft QNH Rwy 24 LH, Rwy 06 RH.

No deadside or overhead joins due to the conjoined ATZ with Sherburn-in-Elmet 3nm to the SW.

RFFS: Crash Category 2 Mon-Fri, 1 Sat/Sun. (3 on remission)
Avoid overflying Church Fenton, Ulleskelf, Bolton Percy & Ryther villages.

<p>Fuel: 100LL, Jet A1 self serve 24hrs. AVTUR 42,000 ltr tank (24 hrs).</p>	<p>Tel: 07541 226316 (PPR), 01937 534197 Fuel/Ops Email: ops@leedseastairport.co.uk Website: www.leedseastairport.co.uk</p>
---	--

LEEDS EAST AIRPORT - CIRCUITS AND VRPs



VRP	Co-ordinates	VRP	Co-ordinates
Bishop Wood	N53 48.55 W001 09.52	Naburn Marina	N53 54.56 W001 05.38
M1/A1(M) Junction	N53 48.86 W001 20.43	Tadcaster	N53 53.43 W001 14.10