

# POOLEYS FLIGHT GUIDE

Elstree Aerodrome, Elstree  
Hertfordshire WD6 3AW.  
Tel: 020 8207 3749.  
E-mail: editor@pooleys.com

---

AMENDMENT- AIRNOTE 3  
AIRAC 07/2022 - 14th July 2022

## Replacement/Additional Pages

117-118 .....	Biggin Hill
211-212 .....	Coventry
237-240 .....	Denham
309-310 .....	Farway Common
339-340 .....	Gloucestershire
557-558 .....	Old Warden
613-614 .....	ST Athan VFR Routes
615-616 .....	ST Michaels
691-692 .....	Thruxton

## AIRNOTES

Airnotes provide a comprehensive listing of all changes applicable to the current Flight Guide. These are updated every 28 days in line with the AIRAC cycle and are available via the Pooleys Website.

Changes notified since the last issue of Airnotes are identified by a 'bullet' in the left-hand margin.

To obviate the necessity of incorporating lengthy manuscript amendments, it is suggested that pages which are subject to amendment be suitably annotated, and then refer to the Airnotes, as required, for details of the changes.

**POOLEYS FLIGHT GUIDE**  
**AIRNOTES**  
**AIRAC 07/2022 - (14th July 2022)**

**UK Flight Information Regions**

Nil

**CLASSIFICATION OF UK AIRSPACE**

- 1-6** Many changes incorporated, please see the new pages via the link below.  
For information go to, [www.pooleys.com/pooleys-uk-flight-guide-amendments/](http://www.pooleys.com/pooleys-uk-flight-guide-amendments/)

**LOWER AIRSPACE RADAR SERVICE (LARS)**

- 25** Newcastle radius corrected to 40 nm on diagram.

**RADAR SERVICE - FL100 AND ABOVE (OUTSIDE CAS)**

- 28** Western Radar Op hours amended to 0645-2015 and contact numbers replaced by 01489 585511.

**MILITARY AERODROME TRAFFIC ZONES (MATZ)**

Nil

**FREQUENCY MONITORING CODES**

- 32** Birmingham Monitoring Frequency Callsign amended from Birmingham Approach to Birmingham Radar.  
London Stansted, amend callsign from Essex Radar to Stansted Radar.
- 33** Paragraph 5, Scottish Centre renamed to London Centre.

**DACS and DAAIS**

- 36** Areas D036, D037, D038, Upper limit amended to 10000ft Alt.
- 45** New Area R156 Windsor Castle, Limits SFC-2500ft Alt.

**NAVIGATIONAL AIDS IN THE UK**

- **48** Belfast/Aldergrove NDB OY: NDB withdrawn.
- **48** Benbecula DME BEN: No associated En-route VOR.
- **49** Goodwood DME GWC: No associated En-route VOR.

**AERODROMES**

- 67** **ABBOTS BROMLEY** Amend to, Op hrs: Strictly PPR. SR-SS. (PPR essential by telephone, leave text message if no reply)
- 71** **ABERDEEN/Dyce** Airway P18 replaced by TAY CTA , see chart at [www.pooleys.com/pooleys-uk-flight-guide-amendments/](http://www.pooleys.com/pooleys-uk-flight-guide-amendments/)
- **78** **ANDREWSFIELD** Com/Nav: Amend Essex Radar to Stansted Radar.
- **81** **AUDLEY END** Com/Nav and Remarks: Amend Essex Radar to Stansted Radar.  
Remarks: Delete "Squawk 7010 when approaching Audley End Airfield"
- **92** **BARROW/Walney Island** Renamed to **Walney**.  
Op Hrs: Amended to Mon-Thu 0700-1900, Fri 0700-1730.  
Remove Helicopter Ops paragraph.
- **98** **BELFAST/ALDERGROVE** Com/Nav: NDB OY withdrawn.
- **101** **BELFAST/ALDERGROVE** TMA/CTR Chart: NDB OY withdrawn.
- 108** **BENBECULA** Runway Dimensions:  
On graphic amend 06/24 to 1837m & 17/35 to 1208m.

- **112 BEVERLEY** Remarks: Overflight of nearby villages of Leven and Brandesburton is **Strictly** prohibited. Circuit diagrams have been redrawn, see new charts at [www.pooleys.com/pooleys-uk-flight-guide-amendments/](http://www.pooleys.com/pooleys-uk-flight-guide-amendments/)
- **117 BIGGIN HILL** Hold E withdrawn. New Bombardier Hangar 1, Twy K modified. Holds K & L1 removed, Hold F4 added. Disused area either side of Twy C added. See amended chart at [www.pooleys.com/pooleys-uk-flight-guide-amendments/](http://www.pooleys.com/pooleys-uk-flight-guide-amendments/)
- **127 BIRMINGHAM** Pershore HIRTA:  
Radius reduced to 0.6nm and upper limit reduced to 700ft.
- 134 **BLACKPOOL** Remarks: Add, Online PPR via <https://www.blackpoolairport.com/ppr/>
- 137 **BODMIN** New circuit diagrams added.  
See new charts at, [www.pooleys.com/pooleys-uk-flight-guide-amendments/](http://www.pooleys.com/pooleys-uk-flight-guide-amendments/)
- **142 BOURNEMOUTH (Hurn)** Contact Details: Amend Airport Duty Mgr to, 01202 364350.
- **145 BRAINTREE (Rayne Hall Farm)** Remarks: Amend Essex Radar to Stansted Radar.
- **151 BRISTOL** Warning box added, Acft landing on Rwy 27 must proceed to the end to vacate, unless otherwise instructed by ATC.
- **155 BRISTOL** Colerne HIRTA added, centred on Colerne AD, Radius 0.9nm and upper limit 3700ft.
- 167 **BUTE** Op hrs: Amend to Strictly PPR. Daylight hours only.
- 169 **CAERNARFON** Holds A1 and B1 renamed A & B respectively.
- 171 **CAMBRIDGE** Helipad 2 removed.
- Op hrs amended to, Mon-Wed 0800-1800; Thu 0900-1700; Fri 0800-1700.  
ATS Mon-Fri, hours as stated above.
- 172 **CAMBRIDGE** Circuits, add, Helicopters operating from H1 will fly variable circuits to minimise noise and avoid fixed wing traffic.  
Warnings: Add, Possible glare from car park to the right of Rwy 23 approach.
- 173 **CAMPBELTOWN** Runway Dimensions and declared distances amended to:  
Rwy Dim(m)      TORA(m)      LDA(m)  
11/29 1412x30      11/29-1412      11/29-1412  
Op hrs: Amend Sun hrs to 1650-1800.
- Windsleaves now 'Lit'.
- 174 **CARDIFF** Com/Nav: Amend TWR frequency to 133.105.
- 198 **CHIRK** Contact details: Remove the telephone number for the Operator.
- 202 **COAL ASTON** Note on graphic regarding Trees at 70ft AGL, amend to read Trees over 86ft AGL (Note: The trees are over 106ft above Rwy 11 thld).  
Suggested offset approach to Rwy 29 and departure from Rwy 11 to avoid trees.
- **206 COMPTON ABBAS** Op hrs: Amend to Tue-Sun 0900-1700.
- 208 **COMPTON ABBAS** Delete Melbury Abbas avoid.  
Departures: Rwy 26, Replace text with, Right turn as soon as practicable after passing 200ft AAL in order to avoid Compton village, tracking over the crest of Melbury hill.
- **212 COVENTRY** Addition of Intersection TORA distances to main graphic.  
For details go to, [www.pooleys.com/pooleys-uk-flight-guide-amendments/](http://www.pooleys.com/pooleys-uk-flight-guide-amendments/)  
Landing Fee: Amend to read,  
£0.015 per kg MTOW. (Check with website for updates) upto 3 tonnes.
- **214 COVENTRY** Add text, **Arrivals:** Due to the proximity of Birmingham's controller airspace (CTA2) over the airport, overhead joins are not possible unless ATC clearance is issued. To join for Rwy 23, route to Draycote Water VRP and join on left base giving way to circuit traffic as appropriate. For Rwy 05, route to Southam VRP and join on right base giving way to circuit traffic as appropriate. Straight in approached are available on request, giving way to circuit traffic as appropriate. See amended page at [www.pooleys.com/pooleys-uk-flight-guide-amendments/](http://www.pooleys.com/pooleys-uk-flight-guide-amendments/)
- **217 CRANFIELD** Windsleaves now 'Lit'. Solar Farm added to the east of the runway.
- 218 **CRANFIELD** Restaurant: Replace with, "Various catering facilities on Cranfield University Campus available." Fuel: Delete Air BP.  
Contact details: Delete Admin and Ops, phone & fax numbers.

- **227 CUMBERNAULD** Amend Customs to read,  
Customs: Certificate of agreement with Border Force, use on-line GAR form.
- **238 DENHAM** Noise abatement procedure notes added.  
Where QNH is stated change to AMSL.
- **239 DENHAM** LFA notice box added. LFA max alt amended to 1200ft.  
See new pages at, [www.pooleys.com/pooleys-uk-flight-guide-amendments/](http://www.pooleys.com/pooleys-uk-flight-guide-amendments/)
- 259 DUNKESWELL** Circuits: Add, Aircraft are to join downwind or Base.
- **253 DUXFORD** Rwy 06R/24L dimensions amended from 1503m to 1447m.
- 255 DUXFORD** Cambridge Gas Venting site added:-  
0.25nm radius centred on N52 04 51, E000 09 51. Limits: SFC - 2700ft ALT.  
See chart at, [www.pooleys.com/pooleys-uk-flight-guide-amendments/](http://www.pooleys.com/pooleys-uk-flight-guide-amendments/)
- 257 EARLS COLNE** Northern taxiway added, Hot Spots 1 & 2 added. Hold 06 renamed hold A, hold 24 renamed hold B, new hold C added NE end of new taxiway.  
Caution: Add, Helicopter circuit and approach pattern different to fixed wing circuit and approach pattern. Remove “during strong southerly winds” from windshear statement.  
See amended chart at [www.pooleys.com/pooleys-uk-flight-guide-amendments/](http://www.pooleys.com/pooleys-uk-flight-guide-amendments/)
- **262 EAST MIDLANDS** Hot Spot 1 Added between Holds B & J. HS1- If instructed to taxi to runway holding point via J & A, do not turn left here onto B.
- 278 EDINBURGH** Hot Spot 1 added on taxiway A between hold A15-A17.  
Mis-route hot spot, multiple taxiway intersections in close proximity.  
Pilots to be aware of potential mis-route.
- **279 EDINBURGH** Contact details: Amend the middle 3 numbers for ATIS; ATC and ATC Admin from 384 to 348.
- **286 ELSTREE** Disused areas added at either end of the runway.  
See amended chart at [www.pooleys.com/pooleys-uk-flight-guide-amendments/](http://www.pooleys.com/pooleys-uk-flight-guide-amendments/)
- 295 EXETER** TODAs added for take-off from taxiway intersections.  
See amended chart at [www.pooleys.com/pooleys-uk-flight-guide-amendments/](http://www.pooleys.com/pooleys-uk-flight-guide-amendments/)
- **296 EXETER** Op hrs: Sun 0900-1700 Winter, 0900-2000 Summer.  
Handling: Add, All movements outside AD Op hours incur extra charge and are subject to availability.
- **310 FARWAY COMMON** Com/Nav:Delete Safetycom and insert Farway Radio 120•310, Exter App amended to 128•980. New Operator: James Hortop, Farway Common Airfield, Hatway Hill, Sidbury, Sidmouth, Devon, EX10 0QW.  
Landing fees: Under 450Kg £10; over 450Kg; Heli £25. Overnight £5.  
Contact details: Amend Mob: to 07802 644280.
- **311 FELIXKIRK** New Operator: Mr Mark Badminton, Birch Tree House, Thorpefield, Thirsk, North Yorkshire. Mob: 07595 217981, Email: [thorpefield@gmail.com](mailto:thorpefield@gmail.com)
- **325 FOWLMERE** Com/Nav and Remarks: Amend Essex Radar to Stansted Radar.
- 330 GLASGOW** Taxiway C closed and Hold C removed.
- 335 GLASGOW** Control Zone Graphic: Controlled airspace to the NW, L602 renamed as ARGYLL CTA 1.
- **340 GLOUCESTERSHIRE** Rwy 18/36 removed. Remove any text relating to this runway on the following page. Twy D added, Twys B & G extended, holds revised.  
Thld 27 turning pad revised, lit windsleeve added Rwy 09 thld.  
Hot spot text amended to “Complex junction”.
- 357 HAWARDEN** Radio Mandatory Zone paragraph note 2, amend to the following.  
2. Display the Hawarden Monitoring \*4607 with Mode C as detailed below and in ENR 1.6 paragraph 2.6, UK SSR Code Allocation Plan, and monitor Hawarden Radar 120•055 prior to entering and whilst inside the RMZ. Pilots must maintain a listening watch and establish 2-way RTF communication, if directed, whilst operating inside the RMZ. Selection of the FMC does not imply receipt of an ATC service and pilots remain responsible for navigation, separation, terrain clearance, and are expected to remain outside of Controlled Airspace at all times.  
When a pilot leaves the RMZ they should deselect the FMC.
- **372 HUNSDON** Com/Nav and Remarks: Amend Essex Radar to Stansted Radar.

- **377 INVERNESS** Op hrs: Winter: Sun-Mon 0630-2130; Tue-Sat 0245-2130.  
Summer: Sun-Mon 0630-2130; Tue-Sat 0245-2130.
- **378 INVERNESS** Warnings: Add, Caution should be exercised when taxiing to hangar 1 due to the close proximity of an adjacent security fence.
- **382 ISLE OF MAN** Handling: Add, Light Acft handling by 3 Legs Aviation Services Ltd, Tel: 07555 135443, Email: mark.langleyiom@outlook.com.
- **388 JERSEY** Hot Spot 1 removed and HS2 renamed HS 1.
- **389 JERSEY** Remarks: Handling: Amend to The handling agent will provide customs, immigration, handling and collection of landing fees. GA aircraft with MAUW of less than 3 tonnes operating via the Jersey Aero Club require handling by Synergy Aviation with parking on the grass area NE of the Aero Club Apron/Hangar. Prebook via Tel: 01534 743990, Email: jersey@flsynergy.com. Visiting GA/Corporate aviation with MAUW of more than 3 tonnes will be handled by Gamma aviation and will normally be parked on the Gamma Apron. Prebook via Tel: 01534 496496.
- 396 KIRKWALL** E3 Hold replaced with Vehicle Hold. Disused taxiway between Holds W2 & W3 opened as TWY W. New SATE compound N of newly opened taxiway W. See amended chart at [www.pooleys.com/pooleys-uk-flight-guide-amendments/](http://www.pooleys.com/pooleys-uk-flight-guide-amendments/)
- 403 LAND'S END** Hold X renamed Hold Z.
- **412 LEE-ON-SOLENT** Rwy 05/23 dimensions amended from 1325m to 1179m.
- 416 LEEDS BRADFORD** Handling: Add radio 131•500 to Swissport.
- 417 LEEDS BRADFORD** Contact details: Admin number amended to 0871 288 3285.
- 424 LEICESTER** Remarks: Replace para 6 (Helicopter joins...) with the following Helicopter circuits at 700ft QFE, LH on Rwy's 04, 06, 15, 16 and 28; RH on Rwy's 10, 22, 24, 33 and 34. No overhead helicopter joins. Helicopters should join the helicopter circuit at 700ft QFE remaining clear of the fixed wing circuit.
- 425 LERWICK/Tingwall** Op hrs: Amend to: PPR. Mon-Fri 0900-1700; Mon (Feb-Oct) 0730-1700, Sat (May-Oct) 1100-1330, and by arrangement.  
Website: Amend to: <https://www.shetland.gov.uk/transport/tingwall-airport>
- 434 LIVERPOOL** Email: Amend to, [airportcontrol@liverpoolairport.com](mailto:airportcontrol@liverpoolairport.com) (PPR).
- 455 LONDON STANSTED** Com/Nav: Rename Essex Radar to Stansted Radar.  
Also in the Remarks 5th line and TMZ text 7th line.
- 456 LONDON STANSTED** Note 2: Rename Essex Radar to Stansted Radar.
- 457 LONDON STANSTED** LTMA 2 removed, lower limits revised for Stansted CTA 3, from 2000ft to 2500ft.
- 458 LONDONDERRY/Eglington** Vehicle Holds added.  
See amended chart at [www.pooleys.com/pooleys-uk-flight-guide-amendments/](http://www.pooleys.com/pooleys-uk-flight-guide-amendments/)
- **471 LYDD** Remarks: Add, All movements strictly PPR by telephone to ATC 01797 320881 or 01797 322417. Electronic GAR forms maybe processed via the pilots information section of the Lydd airport website. Add **Caution:** SAR Helicopters and UAS operations may take place when AD is closed.
- **479 MANCHESTER AIRPORT** Runway Operations: Amend first paragraph to read, Dual runway segregated operations are normally in force between 0630-2000 daily. At all other times, single runway, mixed-mode operations are in force using Runway 05L/23R.
- **492 MEMBURY** Remarks: Add, When the Flying school is operating the current runway in use can be found at <http://www.ttit.uk/membury/>.  
After text South of Rwy 05. Add, Avoid overflying houses north of Rwy 17.
- 506 NETHERTHORPE** Com/Nav: and Remarks:  
Amend Doncaster App frequency to 126•225.
- 515 NEWCASTLE** Airway P18 replaced by BORDERS CTA 12 & 13.  
New BORDERS CTA 14 D FL75-FL105 added.  
see chart at [www.pooleys.com/pooleys-uk-flight-guide-amendments/](http://www.pooleys.com/pooleys-uk-flight-guide-amendments/)
- **519 NEWQUAY** Twy G link now open.  
Maintenance: Apple Aviation replaced by STS Aviation.  
Website: [www.stsaviationgroup.com](http://www.stsaviationgroup.com)

- 524 NORTHAMPTON/Sywell** Com/Nav: Amend to c/s Sywell Radio 122-705 A/G.  
Remarks: PPR. Aerodrome strictly PPR by application form available on website  
[www.sywellaerodrome.co.uk/aviation/sywell-aerodrome-ppr](http://www.sywellaerodrome.co.uk/aviation/sywell-aerodrome-ppr).
- 525 NORTHAMPTON/Sywell** Email: replace with [info@sywellaerodrome.co.uk](mailto:info@sywellaerodrome.co.uk) &  
[tower@sywellaerodrome.co.uk](mailto:tower@sywellaerodrome.co.uk)
- 534 NORTH WEALD** Spelling correction to Air Ambulance Hangar.  
Com/Nav: Amend Essex Radar to Stansted Radar.
- 538 NORWICH** Op hrs: amend to, Strictly PPR. Winter: 0600-2130.  
Summer: Mon 0600-2130; Tue 0600-2300; Wed 0600-2245;  
Thu-Fri 0600-2130; Sat 0600-2230; Sun 0600-2315.
- 552 OLD BUCKENHAM** Remark for Electric Aircraft Charging added.  
**ELECTRIC AIRCRAFT CHARGING IS AVAILABLE 7 DAYS**  
Charging requests can be made when applying for PPR (online).  
Aircraft types currently serviced: (Note: Charging is not self service)  
NUNCATS Zenith CH705 & Pipistrel Velis Electro.
- 557 OLD WARDEN** The runway south of College Road is now open. for amended chart  
Go to [www.pooleys.com/pooleys-uk-flight-guide-amendments/](http://www.pooleys.com/pooleys-uk-flight-guide-amendments/)
- 564 OXFORD** Heli Hold Points N, S, E & W added.  
For information go to, [www.pooleys.com/pooleys-uk-flight-guide-amendments/](http://www.pooleys.com/pooleys-uk-flight-guide-amendments/)
- 565 OXFORD** Remarks: Add, Pilots operating in this area but within 5nm of the edge of  
Brize CTR may chose to maintain a listening watch on Brize (LARS) 124-275 and  
select SSR code 3727.
- 592 PRESTWICK** Op Hrs: add. PPR is mandatory, 72 hrs in advance.  
Remarks: Handling: amend to, Handling mandatory for all aircraft. Handling Agent/  
Fixed Base Operator is: Prestwick Aviation Services, Tel: 01292 511333, Freq: 129-700  
Email: [pikops@glasgowprestwick.com](mailto:pikops@glasgowprestwick.com)
- 612 ST ATHAN** Remove Compass Base from graphic.
- 613 ST ATHAN** VFR Routes: Remarks from Arrivals amended.  
see page at [www.pooleys.com/pooleys-uk-flight-guide-amendments/](http://www.pooleys.com/pooleys-uk-flight-guide-amendments/)
- 616 ST MICHAELS** Com/Nav: Remove St Michaels 129-830 and replace with  
SAFETYCOM 153-480. Runway designators updated to the following:-  
04/22 to 03/21, 18/36 to 17/35 & 15/33 to 13/31.
- 621 SANDY** Rwy 09/27, add text, Not available to visiting Pilots.  
Op hrs: amend to 0800-SS (Sundays 0930-SS).  
Remarks: Remove from circuits text, "27 & 09".  
Warnings: Amend to.  
Considerable road traffic crosses Rwy 35 short final using A603. Rwy 35/17  
Downwind follows a local road The Ridgeway-No flying to the west of this ground  
feature in circuit. Rwy 35/17, 20ft trees on final both ends, in close proximity to thlds.  
80ft trees adjacent to lake on short final Rwy 27. 4ft hedge close to Rwy 09 Thld.  
Sandy TV mast 972ft amsl (790ft agl) 2.5 nm east of AD.  
Shuttleworth AD 2.5 nm SSW of AD has regular air displays during the summer  
weekends, please note when RA(T) active, no visiting pilots. No Fly Zone to the  
East of aerodrome. Do not overfly local villages below 2000ft, particularly  
Moggerhanger immediately to the west.
- 623 SCILLY ISLES/St Mary's** New taxiway H and hold H added at the SW corner of the main apron. Main taxiway renamed taxiway A. See chart at:-  
[www.pooleys.com/pooleys-uk-flight-guide-amendments/](http://www.pooleys.com/pooleys-uk-flight-guide-amendments/)
- 630 SHERBURN IN ELMET** Op Hrs: Amend to 0900-SS. (0800-1830).
- 640 SHOREHAM** Warnings: Add, Grass runways are unavailable before 1000 (0900)  
Monday-Friday to facilitate grass cutting, between 01 March-31 October each year.
- 653 SOUTHAMPTON** Solent CTA Chart, amend upper limit for area D037 from D037/55  
to, D037/10 (Ocnl /55).
- 655 SOUTHEND** Handling: Amend from Stobart to London Southend Jet Centre.  
Email: [ops@londonsjc.com](mailto:ops@londonsjc.com)

- **662 STOKE AIRFIELD** Com/Nav: Amend frequency 118•930 to 120•310.  
Remarks: Add Operated by Medway Airsports Ltd.  
Website: Amend to [www.stokemedwayairfield.co.uk](http://www.stokemedwayairfield.co.uk)
- **675 SUMBURGH** Op hrs: Amend to, Mon-Fri 0730-2000, Sat 0745-1615, Sun 1130-2000.
- 678 SWANSEA** The 2 helipads on Taxiway A have moved south towards Hold B1.
- 683 TEESSIDE INTL** Taxiway B width reduced to 23m.  
Maintenance: Available via Draken, Tel: 01325 332322.
- 684 TEESSIDE INTL** Handling: Amend Jet Centre telephone number to 01325 331049.  
Contact details: Amend Telephone to 01325 332811.
- **687 THIRSK (Sutton Bank)** Rwy 30 withdrawn from use.  
Warnings: Add, North westerly winds can generate extreme turbulence.
- **690 THRUXTON** Remarks: Amend 4th sentence to, Use of the aerodrome not permitted for aircraft that are unable to communicate with the A/G station via RTF on 118•280.  
Remove sentence. "Aircraft that are not radio equipped....not above 1200ft AAL".
- **691 THRUXTON** Warnings: Add, Part of Danger Area D126 overlaps with the NW extremity of the ATZ. Within this part of the ATZ, activities including helicopter flying, may take place below 500ft AGL and also UAS flying at or below 400ft AGL. Operation of aircraft within the Thruyton ATZ is subject to a Letter of Agreement with the Danger Area Authority. Acft within the ATZ may accordingly cross the overlapping part of D126 at a recommended height of 800ft AAL (1119ft ALT) or above. At times that Rwy 25 is in use, acft on the crosswind leg may enter D126 at or above 700ft AAL climbing to 800ft AAL or above. The notified Upper Limit of D126 (1400ft ALT/1081ft AAL) may from time to time be temporarily raised, as notified via NOTAM. During these times it is recommended that acft within the ATZ avoid D126.
- 702 TURWESTON** Remarks: Add, 3 axis Fixed-wing microlights are permitted.
- **722 WEYBOURNE (Muckleburgh)** Runway 16/34, width amended to 17m.
- **733 WICK** Op hrs: Amend to,  
Mon-Fri 0700-1845, Sat Closed, Sun 1445-1630 & 1700-1845.
- 735 WILLOW FARM** Com/Nav: Amend Doncaster Sheffield frequency to 126•225.

### UK HELIPADS & HELIPORTS

- **796 LONDON HELIPORT** London Heliport LFA paragraph. Amend first line to:-  
"Pilots must remain outside Restricted Areas R157 & R158."
- 803 LONDON (ISLE OF DOGS)** New Operator, SKYPORTS Ltd.  
Com/Nav: Radio callsign changed to SKYPORT 131•965.  
Lighting: Portable LEDs added. Email: [ops@skyportslondonheliport.co.uk](mailto:ops@skyportslondonheliport.co.uk)  
Website: [www.skyportslondonheliport.co.uk](http://www.skyportslondonheliport.co.uk)

### HELICOPTER ROUTES IN THE LONDON CTR AND LONDON CITY CTR

- 817** Restricted Area R156 (Windsor Castle) added to diagram.

### MICROLIGHT SITES

- 834** Add High Trees Farm (Staffordshire) N5251.25 W00152.82 Elev 420ft.



## International Dawn to Dusk Competition

The Dawn to Dusk Competition, now in its **fifty ninth year**, provides a unique aeronautical challenge participating in a day's flying using an aircraft of the competitor's choice. The competition is an opportunity to further your flying, to expand your horizons and to give you the excuse you need to have the flying adventure you have always wanted.

The Objective of Dawn to Dusk is to encourage the most interesting employment of a Flying Machine within the limits of competent airmanship and to demonstrate the capabilities of pilot and machine in a day's flying, in the hours between Dawn and Dusk, whilst undertaking an original and praiseworthy objective.

All that is required is for the competitor to set themselves a challenging goal with a theme and fly it. You then need to write up a detailed log of your preparations and flight.

Over the past 50+ years winning and highly placed entries have been submitted from more than 14 countries including Australia, New Zealand, Scandinavia, Canada, United States and of course from across Europe.

If you are interested in entering the competition, please click on the '**How to Enter**' tab on our website: [www.pooleys.com/dawn-to-dusk/](http://www.pooleys.com/dawn-to-dusk/). If you have any questions, please email [enquiries@pooleysdawntodusk.com](mailto:enquiries@pooleysdawntodusk.com) and we will come back to you.



# EGKB

## BIGGIN HILL

599ft AMSL

N51 19.85 E000 01.95

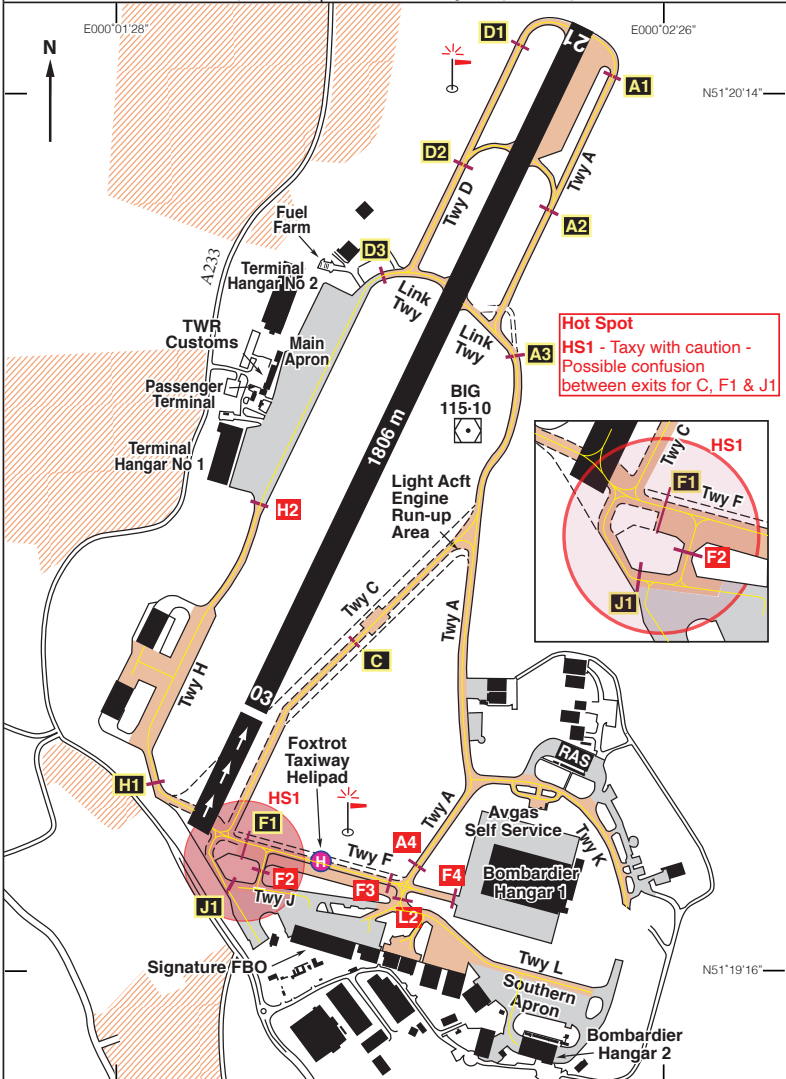
12 nm SE of London.

OCK 115-30 084 18-1, MAY 117-90 350 19-1

c/s Biggin APP 129-405 TWR 134-805 VDF 129-405, 134-805 ATIS 135-680

Thames Director 132-700, 133-455, 128-025

VOR/DME 'BIG' 115-10 (On A/D) ILS /DME Rwy 21 (206°M) I-BGH 109-35



## EGKB

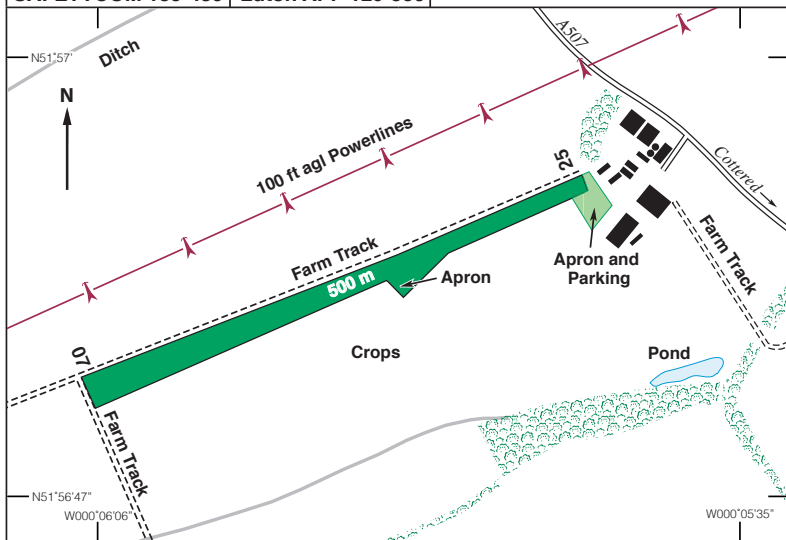
N51 19.85	E000 01.95	<b>BIGGIN HILL</b>		599ft AMSL	
<b>Rwy</b>	<b>Dim(m)</b>	<b>Surface</b>	<b>TORA(m)</b>	<b>LDA(m)</b>	<b>Lighting</b>
03/21	1806x45	Asphalt	03-1781 21-1670	03-1555 21-1670	Ap Thr Rwy PAPI 4° Ap Thr Rwy PAPI 3°
<b>Op Hrs:</b> Strictly PPR. Mon-Fri 0630-2300, Sat, Sun, & PHs 0800-2200. O/T £.					
<b>Landing Fee:</b> Up to 1700kg £45; 1701-3500kg £97; + VAT. See website. <a href="https://bigginhillairport.com/wp-content/uploads/2021/03/Biggin-Hill-Airport-Fees-and-Charges-2021-22.pdf">https://bigginhillairport.com/wp-content/uploads/2021/03/Biggin-Hill-Airport-Fees-and-Charges-2021-22.pdf</a>					
<b>Parking:</b> First 2 hrs free, then per day: Up to 1700 kg £17; 1701–3500 kg £27 + VAT.					
<b>Customs:</b> As Op hrs, Tel: 01959 578527. UK GAR (General Aviation Report) required prior to international arrivals.					
<b>Hangarage &amp; Maintenance:</b> Biggin Hill Operations Tel: 01959 578525.					
<p><b>Remarks:</b> Operated by Biggin Hill Airport Ltd., Biggin Hill Airport, Kent. TN16 3BH. London Biggin Hill Airport is located close to densely populated and largely residential areas. We want to maintain good relations with local residents and neighbours who offer us wide support. We politely request your compliance with Noise Preferential Routings and maximum aircraft noise limits.</p> <p>Noise limits and Noise Sensitive Areas are controlled by a Noise Monitoring and Track Keeping System (NMTKS).</p> <p>AD Not available to non-radio aircraft. Microlight flying is prohibited at this airport. Noise Preferential Routings applicable to jet and turbine aircraft available on request. Due to the close proximity of residential areas, the running of APUs on the West Apron is limited to a maximum of 20 minutes. PPR via <a href="http://www.bigginhillairport.com">www.bigginhillairport.com</a> (General Aviation Tab) or at <a href="http://www.bigginbooking.com">www.bigginbooking.com</a>.</p> <p>All personnel are to wear hi-visibility clothing while operating on the aprons. Drone operators requesting to operate within the Biggin Hill FRZ must gain permission via: (<a href="http://drones.bigginhillairport.com">http://drones.bigginhillairport.com</a>).</p>					
<b>Helicopter Operations:</b>					
i. In order to avoid noise sensitive areas surrounding the aerodrome, helicopters must conform to normal fixed-wing joining, departure and circuit procedures unless otherwise instructed by ATC.					
ii. Pilots of helicopters should take particular note of a noise sensitive area on the northern aerodrome boundary prohibiting close right-base approaches for Runway 21 or direct departures to the north from Runway 03.					
<b>Aircraft Handling:</b> Biggin Hill Executive Aircraft Handling Tel. 01959 578552. Biggin Hill Ops 131•790.					
VFR Departure Routes - See next page and page 120.					
<b>Note:</b> ATZ extended to cover Rwy 21 IFR Noise Preferential departures.					
<b>Warnings:</b> Windshear and turbulence may be experienced on short final to Rwy 03 when wind from the NW. Departing aircraft beware of other aircraft joining the visual circuit from the 'Deadside'.					
<b>Fuel:</b> 100LL, Jet A1. Most Debit Cards, also, Visa, Diners, Mastercard, Amex and Multi-Service.			<b>Tel:</b> 01959 578525 ATC/Ops/Fuel <b>Tel:</b> 01959 578500 Admin. <b>Fax:</b> 01959 576404 Ops <b>Email:</b> <a href="mailto:enquiries@bigginhillairport.com">enquiries@bigginhillairport.com</a> <b>Website:</b> <a href="http://www.bigginhillairport.com">www.bigginhillairport.com</a>		

N51 56.88 W000 05.92 **COTTERED (Buntingford)** 390ft AMSL

5 nm SE of Baldock.

**BKY 116-25 255 6-3**  
**BPK 117-50 004 12-5**

**SAFETYCOM 135-480** **Luton APP 129-550**



Rwy	Dim(m)	Surface	TORA(m)	LDA(m)	Lighting
07/25	500x20	Grass		Unlicensed	Nil
Rwy 25 slight downslope.					

**Op hrs:** PPR by Telephone. SR-SS.

**Landing Fee:** £10.00.

**Customs:** Nil.

**Hangarage:** Please check.

**Maintenance:** Nil.

**Remarks:** Operated by Kingsley Brothers, Childs Farm, Cottered, Buntingford, Herts SG9 9PU.

Aerodrome situated beneath Luton CTA, base 2500ft ALT.

Visitors welcome at pilot's own risk.

**Circuits** at 1000ft QFE.

Avoid overflying Cottered Village SE of the airfield.

**Warnings:** Trees and farm buildings close to Rwy 25 threshold. Farm tracks to the North and West of the strip.

Power line 100ft agl, 80m to the North parallel to the runway with a second line 1000m further to the North.

Crops grown close to the strip edge.

**Restaurant:** Bull pub in Cottered village.

**Fuel:** Nil.

**Tel:** 01763 281256

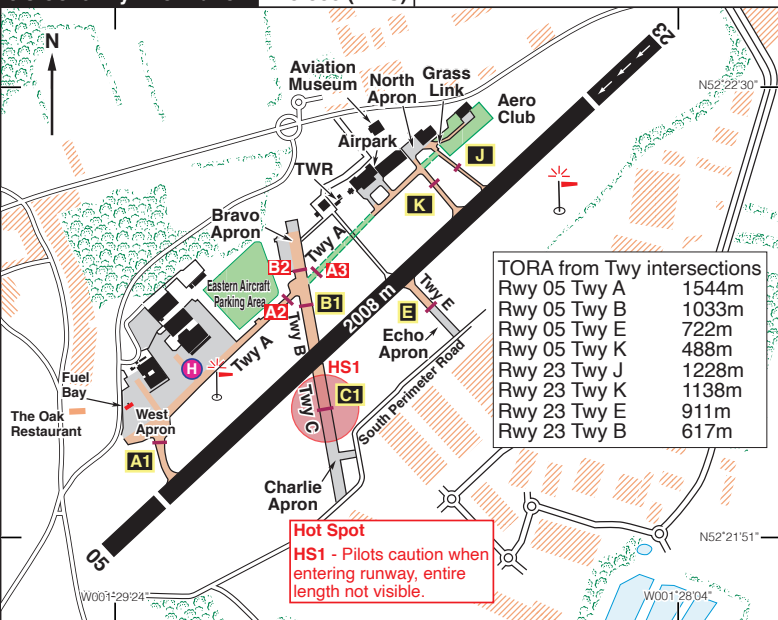
**Fax:** 01763 281652

EGBE

N52 22.19 W001 28.78 **COVENTRY** 267ft AMSL

3 nm SSE of Coventry. HON 113-65 083 6-8. DTY 116-40 310 17-6

**c/s Coventry Information 123-830 (AFIS)**



Rwy	Dim(m)	Surface	TORA(m)	LDA(m)	Lighting
05/23	2008x46	Asphalt	05-1615 23-1825	05-1615 23-1615	Ap Thr Rwy PAPI Ap Thr Rwy PAPI

**Op hrs:** Tue-Sat 0900-1700, Helimed traffic only 0830-0900.  
 Strictly PPR for all movements by [www.egbe-flights.com](http://www.egbe-flights.com) (primary).  
 Tel: 02476 511738 (only if website unavailable).

**Landing Fee:** £0.015 per kg MTOW. (Check with website for updates) upto 3 tonnes.

**Hangarage:** Available. **Customs:** Available by prior notice.

**Maintenance:** Aerotech Aircraft Maintenance Tel: 02476 306888.

**Remarks:** Operated by Coventry Airport Ltd, Coventry Airport, Rowley Road, Coventry CV3 4FR.

Due to the complexities of adjacent controlled airspace, pilots are reminded to ensure that their flight remains clear of the Birmingham CTR/CTA unless ATC clearance is issued.  
 Base of Birmingham CTA 1500ft QNH (1233ft QFE). Pilots must remain outside of controlled airspace, unless cleared to enter by Birmingham ATC.  
 The portion of Coventry's ATZ inside the Birmingham CTA is under the direct control of Birmingham ATC and not Coventry ATS.

*continued*

Changes 14 July 2022: TORAs for taxiway intersections added.

# EGLD

## DENHAM

N51 35.30 W000 30.78

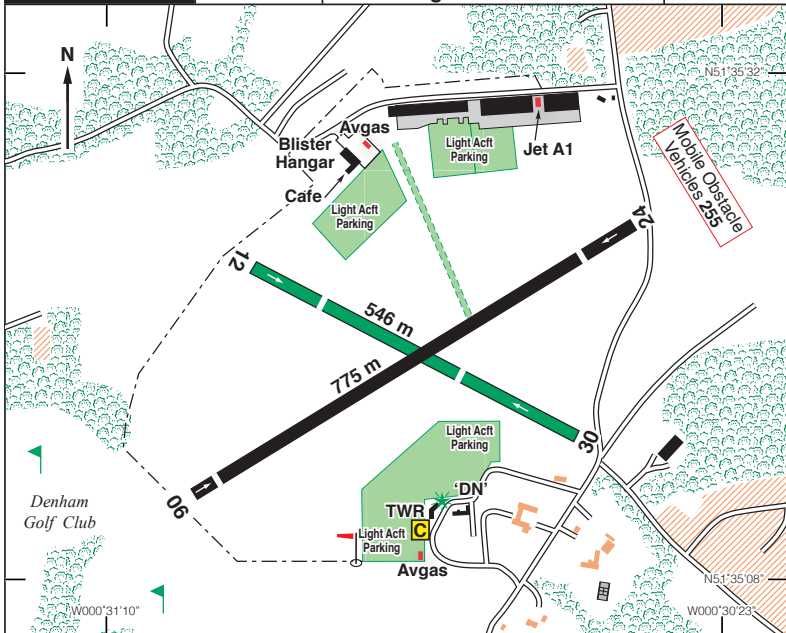
249ft AMSL

7.5 nm N of Heathrow Airport.

BNN 113-75 170 8-4

LON 113-60 344 6-3

**c/s Denham Radio 130-730 A/G Farnborough Radar 132-800 LARS**



Rwy	Dim(m)	Surface	TORA(m)	LDA(m)	Lighting
06/24	775x18	Asphalt	06-686 24-728	06-706 24-670	Thr Rwy APAPI 4.5°† Thr Rwy APAPI 4.5°
12/30	546x18	Grass	12-363 30-432	12-419 30-363	Nil Nil IBn 'DN' Gn

† APAPIs on Rwy 06 are visible to the left of extended centreline where normal obstacle clearance is not guaranteed. Ignore signals until aligned with runway.

**Op hrs:** PPR by Telephone or Email - **before departure.**  
Winter: 0800-1800. Summer 0800-2000; and by arrangement.

**Landing Fee:** Up to 1000 kg £15.00; 1001-1500 kg £18.00. All inclusive of VAT. Other fees on request.

**Customs:** EU 4 hrs PNR, non EU 24 hrs PNR. Special Branch 12 hrs notice.

**Hangarage:** By arrangement.

**Maintenance:** Fixed wing: London Denham Aviation Ltd, 01895 832335  
Rotary wing: HQ Aviation Ltd, 01895 833373, AS Aerospace Ltd, 01895 831694

*continued*

**EGLD**

N51 35.30 W000 30.78

**DENHAM**

249ft AMSL

**Remarks:** Operated by Bickerton's Aerodromes Ltd., Denham Aerodrome, Denham, Bucks, UB9 5DE. Aerodrome situated within the London CTR (Class 'D' Controlled Airspace), see chart overleaf.

Non-radio aircraft not accepted without permission from AD operator.

Following heavy rain, snow melt etc, some parts of the aerodrome may not be suitable for taxiing. Contact the Duty Officer for information.

**Arrivals, Departures and Circuits:**

There is no overhead join. Max alt 1000ft AMSL See website for briefing, joining videos and photos. Use transponder On with altitude information.

Circuit altitude 1000ft AMSL.

Rwy 24 RH, Rwy 06 LH, Rwy 12/30 variable.

**Circuit Joining & Circuits:**

- descend to circuit Alt, report at the VRP and establish a long base leg;
- look out for acft downwind, joining traffic must give way to circuit traffic;
- Pilots should not orbit in the circuit;
- Use available equipment to aid conspicuity; landing light on; strobes on transponder Alt;
- Pilots should give position reports downwind and final;

**Departures:**

- After take-off, maintain Rwy heading, turn onto crosswind and climb to circuit Alt;
- Extend crosswind leg to the appropriate VRP;
- Pilots in receipt of a clearance from Heathrow Radar or Northolt Approach may deviate in accordance with their clearance;

**Noise Abatement Procedures:**

- Arrival Rwy 06: report at VRP St Giles, establish a long base leg. Overfly fields to avoid most houses in Chalfont St Peter and Gerrards Cross (where safely possible)
- Arrival Rwy 24: report at VRP Maple Cross, establish a long base leg. Overfly the lakes (where safely possible);
- Departure Rwy 06: after take-off maintain runway heading until past caravan site on the left, then turn left over the lakes (where safely possible);
- Departure Rwy 24: after take-off maintain runway heading until past houses on the right, then turn right before the A413 (where safely possible);
- extend crosswind leg out of the circuit to VRP before turning on track.

**Visual Reference Points (VRPs)****VRP**

**Maple Cross**-Eastern end of spur road to M25 Jnct 17  
N51 37.77 W000 30.25

**St. Giles**-Xroads on A413 to the E of Chalfont St Giles  
N51 38.03 W000 34.02

**VOR/DME**

BNN 164°/6 nm

BNN 187°/6 nm

**Warnings:** Powerlines, 369ft AMSL, 270°T, running north/south, 0.6nm from ARP. A public road crosses final approach to Rwy 24, 100m from displaced threshold.

**Restaurant:** Biggles licensed Restaurant located south side near Tower, closed Mondays, Tel: 01895 834241.

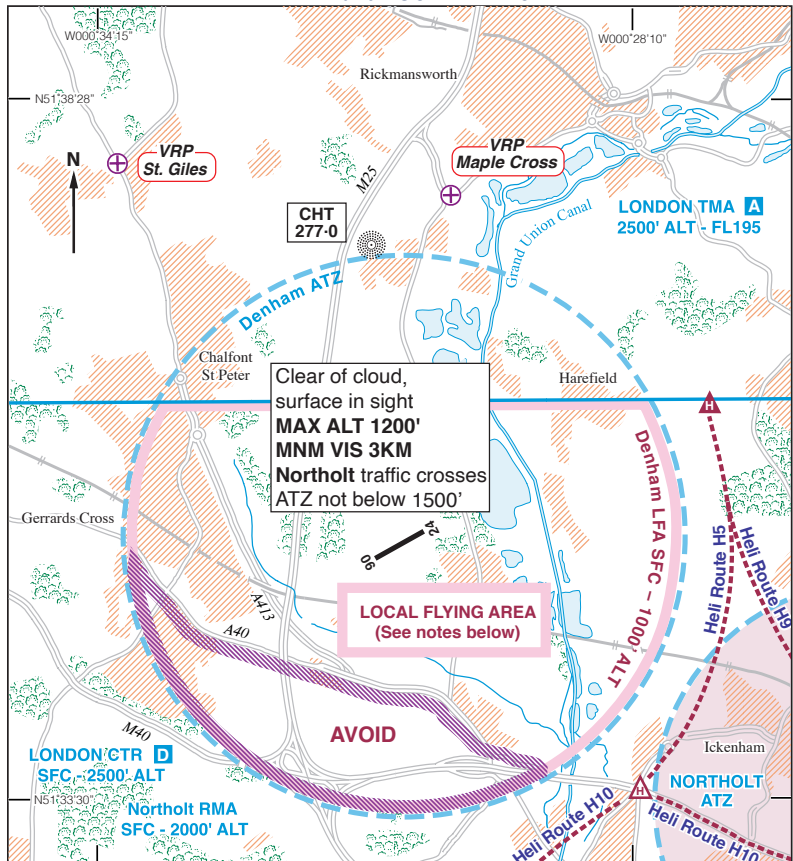
Crew Room, licensed cafe located north side by Blister Hangar, open daily, Tel: 01895 834568.

**Taxis:** Carline, Tel: 01895 247247.

**Fuel:** 100LL, Jet A1+AL48  
0900-1730 or by arrangement).

**Tel:** 01895 832161 Twr; 060 Admin  
**Fax:** 01895 833486 Twr/ 831161 Admin  
**Email:** tower@egld.com  
**Website:** www.egld.com

## DENHAM ATZ and LOCAL FLYING AREA



Changes 14 July 2022: Notes box amended.

### DENHAM LFA

In the Local Flying Area (the part of the ATZ in London CTR) flights without compliance with IFR requirements may take place subject to the following conditions:

1. Aircraft to remain clear of cloud with the surface in sight.
2. Maximum altitude 1200ft AMSL, with a minimum flight visibility of 3 km.
3. The area to the South of the A40 is to be avoided at all times.

- Notes:**
1. Pilots are responsible for providing their own separation. Joining aircraft should give way to circuit traffic.
  2. Flights to the East, South or West through London CTR require SVFR clearance. Pilots inbound with SVFR clearance must contact Denham Radio before entering the ATZ and must give way to circuit traffic. If necessary, keep clear of the ATZ, leave the CTR and follow the published joining procedures.

**EGBD**

**DERBY**

175ft AMSL

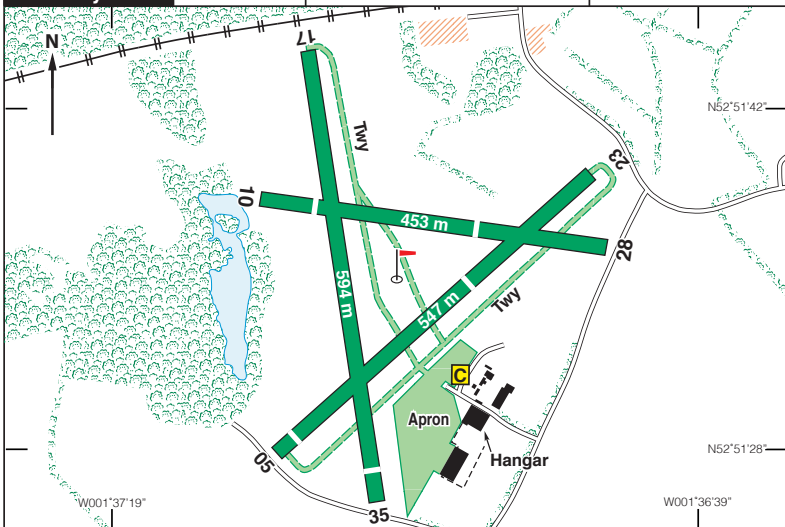
N52 51.58 W001 37.05

6 nm SW of Derby.

TNT 115-70 171 11-8. HON 113-65 003 30-3

DTY 116-40 339 44-7

**c/s Derby Radio 118-355 A/G East Midlands RAD 134-180**



Rwy	Dim(m)	Surface	TORA(m)	LDA(m)	Lighting
05/23	547x20	Grass	05-330 23-523	05-499 23-306	Nil Nil
10/28	453x20	Grass	10-316 28-433	10-379 28-261	Nil Nil
17/35	594x20	Grass	17-558 (Landing Only)	(Take-off only) 35-534	Nil Nil

**Op hrs:** Winter: PPR. Mon-Sat 0900-SS, Sun & PHs 0930-SS.  
Summer: PPR. Mon-Sat 0900-1800, Sun & PHs 0930-1800.

**Landing Fee:** £8. **Customs:** Nil. **Hangarage:** Nil. **Maintenance:** Nil.

**Remarks:** Operated by Derby Aero Club. Aerodrome situated beneath East Midlands CTA (1500ft - FL55). Special procedures applicable to all flights must be obtained by telephone from Derby Aero Club when arranging prior permission. Non radio aircraft not accepted. Aerodrome not licensed for public transport flights. No runway designators. Displaced landing thresholds to Rwy 05, 23 and 35 marked by black/white wing bars; Rwy 10 and 25 by orange/white wing bars.

**Circuits:** Rwy 05 LH - 1000ft; 23 RH - 1000ft; 35 RH - 800ft; 17 LH (RH if 23 in use for landing) - 800ft; 28 RH - 800ft; 10 LH - 800ft. Avoid overflying local villages. No overhead joins due to proximity of East Midlands CTA (base 1500ft).

**Caution:** Power cables 100ft aal immediately North of A/D. An early 'Go around' decision vital in the event of missed approach to Rwy 35. Power cables 30ft aal on approach to Rwy 28. Possible turbulence from trees on final approach to Rwy 23. These trees also shield aircraft low on final approach from those at the 23 hold. Chimney 100ft aal, 275ft amsl, 010°/800m.

**Fuel:** 100LL.

**Tel:** 01283 733803. **Fax:** 01283 734829

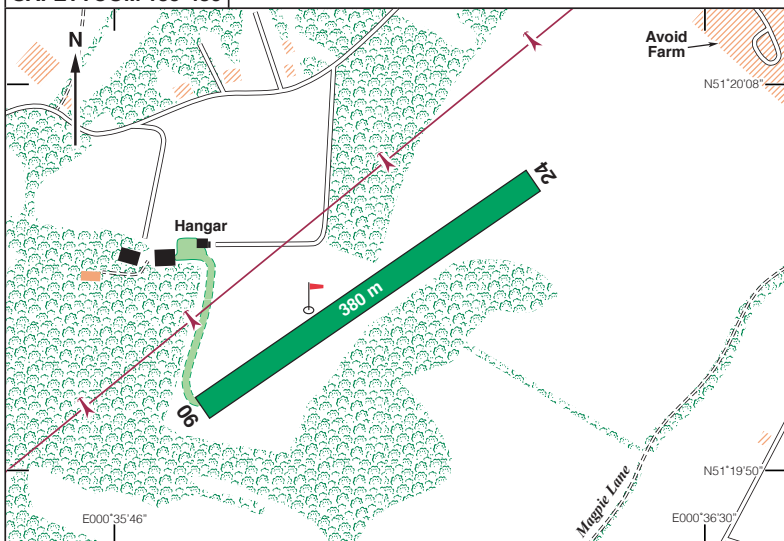


N51 19.96 E000 36.05

**FARTHING CORNER**

420ft AMSL

4 nm S of Gillingham (300m from Medway Services M2).

**SAFETYCOM 135-480**

Rwy	Dim(m)	Surface	TORA(m)	LDA(m)	Lighting
-----	--------	---------	---------	--------	----------

06/24	380x20	Grass	Unlicensed		Nil
-------	--------	-------	------------	--	-----

**Op hrs:** SR-SS. Strictly PPR.**Landing Fee:** £50 without PPR.**Customs:** Nil.**Hangarage:** Nil.**Maintenance:** Nil.**Remarks:** Operated by SBC, Stoneacre Farm, Matts Hill Road, Sittingbourne, Kent ME9 7XA.

Unlicensed airfield located 1 nm N of Detling VOR.

Use of airfield by prior permission essential.

Power cables run parallel to the strip, 80m NW of boundary.

Avoid overflying farmhouse 400m to the east of runway.

Final approach to Rwy 24 to be made between Farm House and threshold.

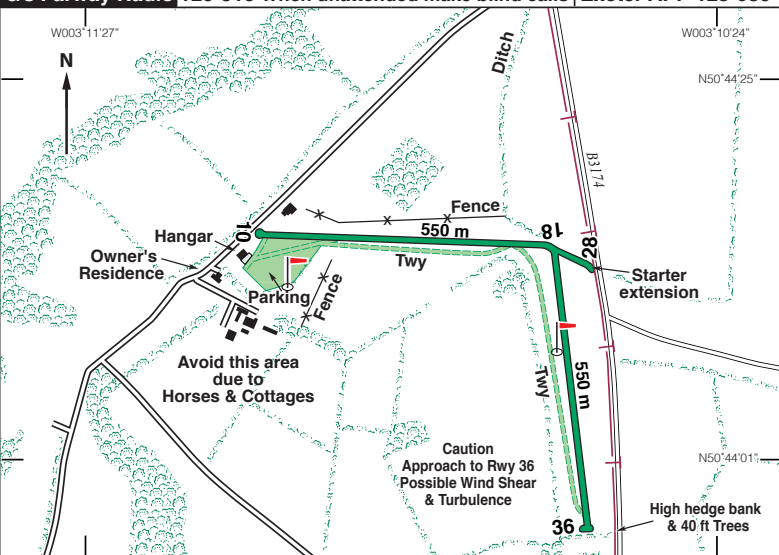
**Warnings:** In light wind conditions severe windshear may be encountered on final approach to Rwy 06.

**Fuel:** Nil.**Tel:** 01634 264011

N50 44.28 W003 10.83

**FARWAY COMMON**

771ft AMSL

9 nm E of Exeter Airport.  
4 nm NE of Sidmouth.**BHD 112-05 032 23-6****c/s Farway Radio 120-310 When unattended make blind calls Exeter APP 128-980**

Rwy	Dim(m)	Surface	TORA(m)	LDA(m)	Lighting
10/28*	550x18	Grass	Unlicensed		Nil
18/36	550x18	Grass	Unlicensed		Nil
Rwy 10 - 1.7° Upslope. Rwy 36 - 0.6° Upslope. *Rwy 28 - Extension 175m					

**Op hrs:** 0800-SS. PPR via website.**Landing Fee:** Under 450Kg £10; Over 450Kg £15; Helis £25. Overnight £7-50.**Customs:** Border Force Letter of agreement. **Hangarage/ Maintenance:** Nil.

**Remarks:** Operated by Farway Common Airfield Ltd, Moorlands Farm, Hatway Hill, Sidbury, EX10 0QW. AD Managers, James Hortop & Catherine Upchurch. Unlicensed airfield. All arriving and departing aircraft contact Exeter APP 128-980. Standard calls required on Farway Radio 120-310. Circuits at 800ft. Rws 10,18 LH; Rws 28,36 RH. Runway markers at 1/4, 1/2, & 3/4 points on all runways. Departures: Climb to circuit height before turning on course. Camping available overnight. Airfield car available - Book via website.

**Caution:** Be aware of possible turbulence and wind shear when overflying the trees on approach to Rwy 36. Avoid overflying area to south west.

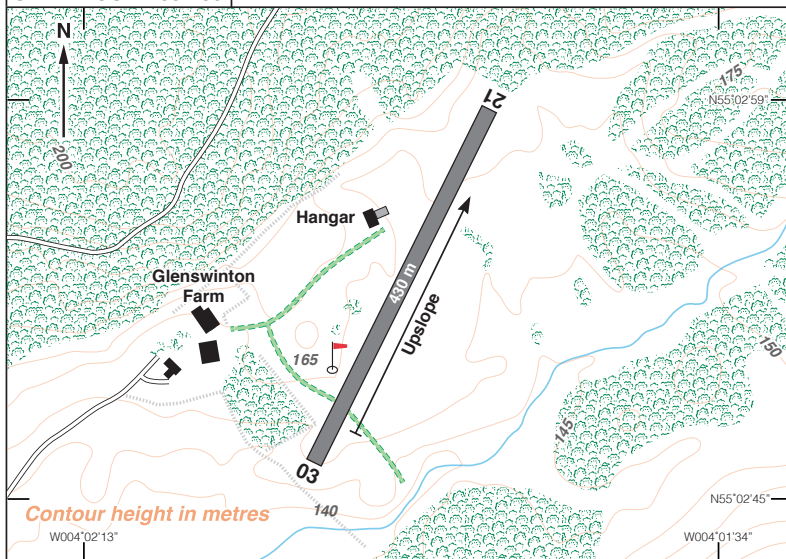
**Restaurant/Accommodation:** Hotels and B&B available locally.**Taxis:** Peak Tel: 01395 513322; Sparkys Tel: 01404 47670.**Fuel:** Nil.**Tel/Fax:** 01395 597535**Mob:** 07802 644280**Website:** www.farwaycommon.com

N55 02.86 W004 01.91

**GLENSWINTON**

500ft AMSL

7 nm NW of Castle Douglas. 15 nm W of Dumfries.

**TLA 113-80 224 35-8****SAFETYCOM 135-480**

Rwy	Dim(m)	Surface	TORA(m)	LDA(m)	Lighting
03/21	430x15	Grass/Gravel	Unlicensed		Nil

**Op hrs:** SR-SS.**Landing Fee:** Nil.**Customs:** Nil.**Hangarage:** Nil.**Maintenance:** Nil.

**Remarks:** Operated by Glenswinton Farm, Parton, Castle Douglas, Scotland DG7 3NL. Unlicensed private airfield. Visitors welcome at their own risk.  
 Noise Abatement Procedures: Please avoid overflying dwellings other than Glenswinton Farm.

**Warnings:** High ground, 890ft amsl to North and 1040ft amsl to East of airfield.  
 Airfield situated within Military Low Flying Area, LFA 20(T).

**Fuel:** By arrangement.**Tel:** 01644 470223**Mob:** 07802 916995**Website:** www.glenswinton.co.uk

N51 53.65 W002 10.03

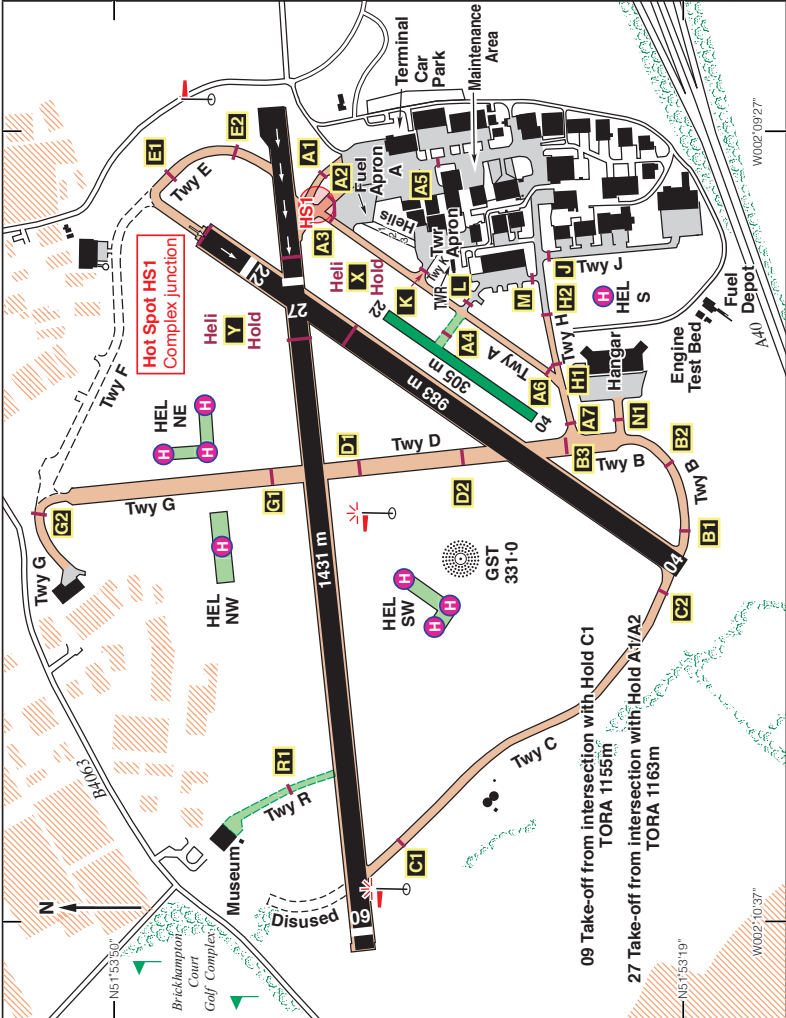
3.5 nm W of Cheltenham.

HON 113-65 217 33-4  
BCN 117-45 079 41-9

c/s Gloster APP/RAD 128-555 TWR 122-905 RAD 120-980 (as directed)

VDF 128-555 ATIS 127-480 ILS/DME Rwy 27 (266°M) 'I-GOS' 109-95

NDB 'GST' 331-0 (On A/D) - Warning: Interference may occur within 5 nm of Droitwich and some ADFs may show occasional bearing fluctuations on approach to Rwy 27



Changes 14 July 2022: Rwy 18/36 withdrawn. Taxiway F marked as disused.

# EGTH

N52 05.20 W000 19.12 **OLD WARDEN/SHUTTLEWORTH** 127ft AMSL

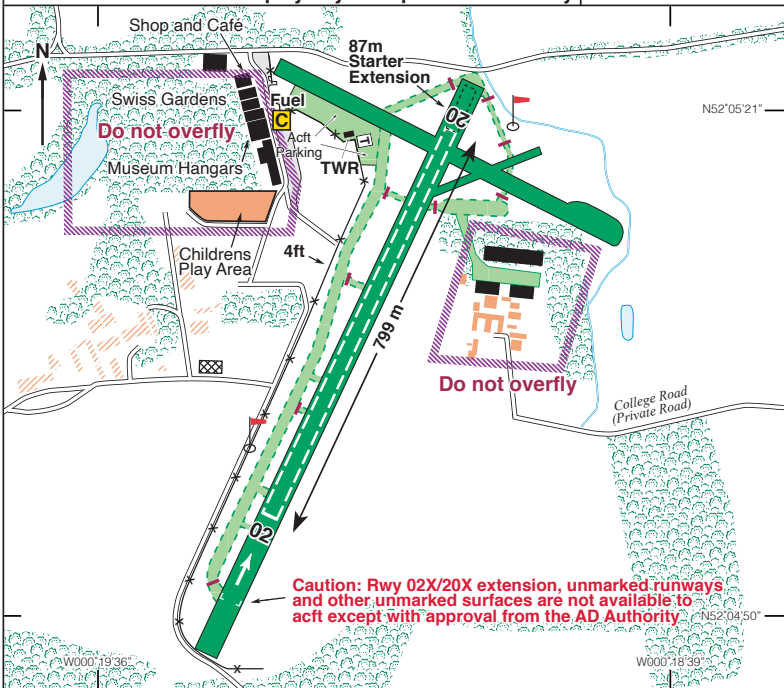
6 nm ESE of Bedford.

**BNN 113-75 021 23-3**

**BKY 116-25 292 15-3**

**c/s Old Warden Information/Radio/Traffic 130-705**

**Radio/AFIS manned on display days or Special events only**



Changes 14 July 2022: Runway now fully open.

Rwy	Dim(m)	Surface	TORA(m)	LDA(m)	Lighting
02/20	799x21	Grass	02-799 20-799	02-799 20-799	Nil <i>Check AIP and NOTAMS</i>
*02X/20X	1000x21	Grass	02-1000 20-1087	02-1068 20-1000	Nil <i>for any changes</i> Nil

\* Runway 02X/20X extension, unmarked runways and other unmarked surfaces are not available to other aircraft except with approval of the Aerodrome authorities. (Conditions apply).

**Note: Rwy 02 has a marked down slope, the effective landing distance is reduced.**

**Op hrs: PPR Mandatory** via weblink - <https://oldwardenaerodrome.co.uk/ppr-booking-form>  
 Winter: 1000-1600 or SS + 30 whichever is earlier.  
 Summer: 0900-1600. ATZ activated by NOTAM

*continued*

## EGTH

N52 05.20 W000 19.12

**OLD WARDEN/SHUTTLEWORTH**

127ft AMSL

**Landing Fee:** £10 all types. Includes free entry on non-event days to all on-site visitor attractions – see Facilities below and [www.shuttleworth.org](http://www.shuttleworth.org)  
An Honesty box is provided at the Booking-In point adjacent to the fuel pumps.  
For Event days (e.g. air displays) event tickets may be purchased in advance for all occupants.

The Booking-in point on these days is normally at the base of the control tower.

**Hangarage/Maintenance/Customs:** By arrangement, see contact details below.

**Remarks:** Operated by The Shuttleworth Collection, Shuttleworth Old Warden Aerodrome, Biggleswade, Beds. SG18 9EP. Seasonal licensed Aerodrome.  
Pilots use the aerodrome at their own risk and are required to read and accept the T&Cs as detailed on the website and by using the airfield are otherwise assumed to have accepted these conditions.

A full standard overhead join must be made at 1800ft AAL due to model aircraft activity and to look carefully for any other aircraft – see Warnings below.

Only Rwy 02/20 is available to Visitors however all other runways may be in use by resident aircraft and must not be obstructed.

**Circuit** height - 800ft, RH on Rwy 02, LH on Rwy 20.

Aircraft operators must transmit their intentions, including position reports.  
Do not backtrack runways. Vacate runway to NW.

Confine movements to the mown areas.

### **Noise Abatement:**

Local habitation should not be overflown below 1500ft within 2 nm of the AD.

### **Flying Display Days and Evenings:**

Parking limited. PPR should be made well in advance. Last landing: Day - 1300, Evening - 1 hour before start of display. Vacate runway to NW or as directed by ATC.  
Departures will not be permitted until after the display.

### **Caution:**

With moderate and higher wind speeds, pilots should expect sink/ turbulence on approach/climb out from all runways.

### **Warnings:**

Aircraft (often non-radio equipped) may be performing practice displays, aerobatics, formation & test flying in the immediate vicinity of the airfield. Visiting pilots must give way and hold well clear until the activity has clearly finished – this is a condition of the use of the airfield.

Birds of prey fly over the airfield.

### **Facilities:**

Open 1000-1600 (1700 in Summer) – The world famous Shuttleworth Collection of airworthy history aircraft, Regency Swiss Gardens, Parklands, large children's play area, Café and Museum shop. Accommodation on site also available. See website.

**Taxis:** AT Cars, Tel: 01767 600399/199. Morris's Tel: 01767 600006.

**Fuel:** 100LL & UL91.  
Self service pay at pump.

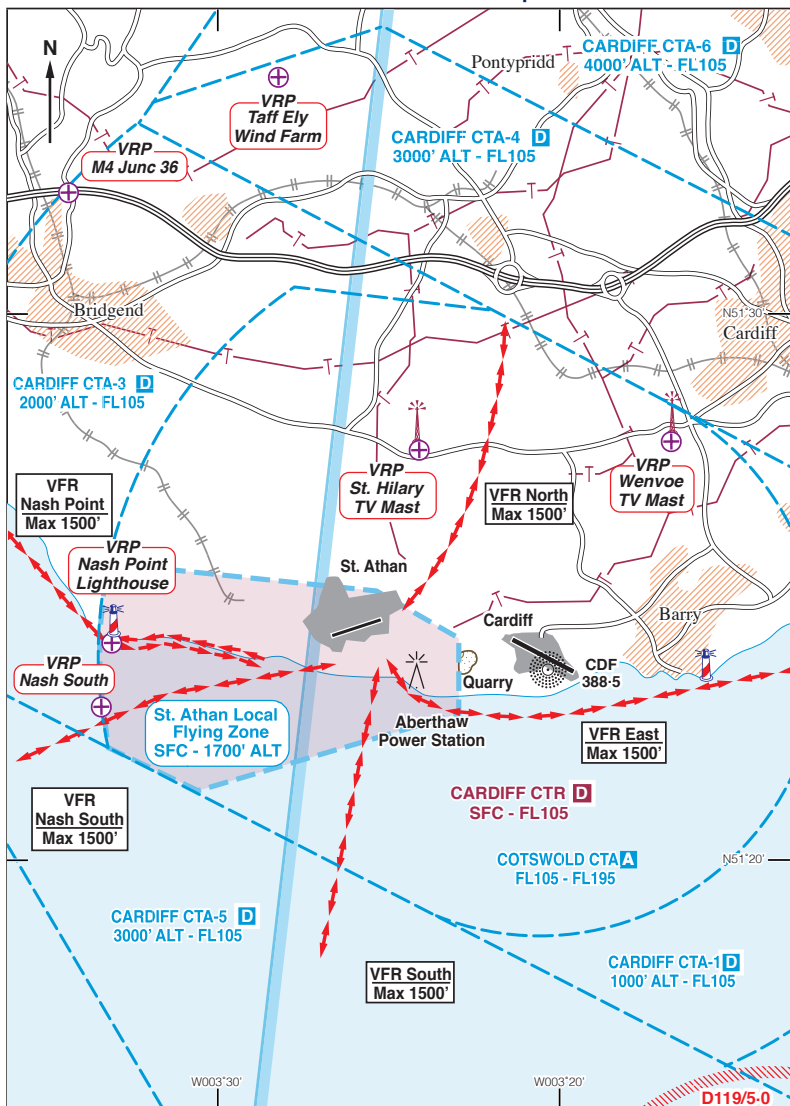
**Tel:** 01767 627933 (Opt 3 Enquiries)  
**Tel:** 01767 627918  
(Tower when manned)  
**Email:** [enquiries@shuttleworth.org](mailto:enquiries@shuttleworth.org)  
**Website:** [www.shuttleworth.org](http://www.shuttleworth.org)

## VFR Routes to/from St Athan

VFR Arrivals				
Designator	Rwy	Route	Maximum Altitude	Remarks
East	07&25	From the North East route as directed by Cardiff Tower to hold East of Aberthaw Power Station and as directed by St Athan ATC	1500ft	Do not proceed west of Aberthaw Power Station until cleared by St Athan ATC.
South	07&25	Enter CAS from the South, remain West of the quarry and as directed by St Athan ATC.	1500ft	
Nash Point	07&25	Enter CAS via Nash Point route Eastbound along the coast over water then as directed by St Athan ATC.	1500ft	
North Arrival	07&25	Enter CAS towards the St Hilary VRP to orbit and remain North of the mast then as directed by Cardiff ATC.	1500ft	
Nash South	07&25	Enter CAS via Nash South then as directed by St Athan ATC.	1500ft	
Straight In	07&25	Enter CAS to position Straight in for the runway in use.	1500ft	

VFR Departures				
Designator	Rwy	Route	Maximum Altitude	Remarks
East	07&25	Aircraft remain West of the quarry and route to remain West of Aberthaw Power Station over water, clearance limit Abethaw Power Station then as directed by Cardiff ATC.	1500ft	Do not proceed east of Aberthaw Power Station until cleared by Cardiff ATC.
South	07&25	Aircraft remain West of the quarry and leave CAS towards Minehead VRP.	1500ft	
Nash Point	07&25	Aircraft remain within the confines of the LFZ and leave CAS to the West towards Nash Point VRP remaining overland and South of Cardiff Rwy 12 final track.	1500ft	Runway 07 departures should remain west of the quarry.
North arrival	07	Right turn after St Athan village but within the confines of the LFZ, track 250° to exit CAS via Nash South.	1500ft	
Nash South	25	Leave CAS via Nash South	1500ft	
North	07&25	Leave CAS between the St Hilary and Wenvoe TV masts.	1500ft	

## ST. ATHAN LFZ & VFR Arrivals/Departures



Aerodrome is within the Cardiff CTR. Acft are to call Cardiff APP 5 min before entry. Acft unable to contact Cardiff App are to contact St Athan tower and remain outside controlled airspace until they receive ATC clearance to enter. Cardiff QNH used for initial approach and radar patterns.

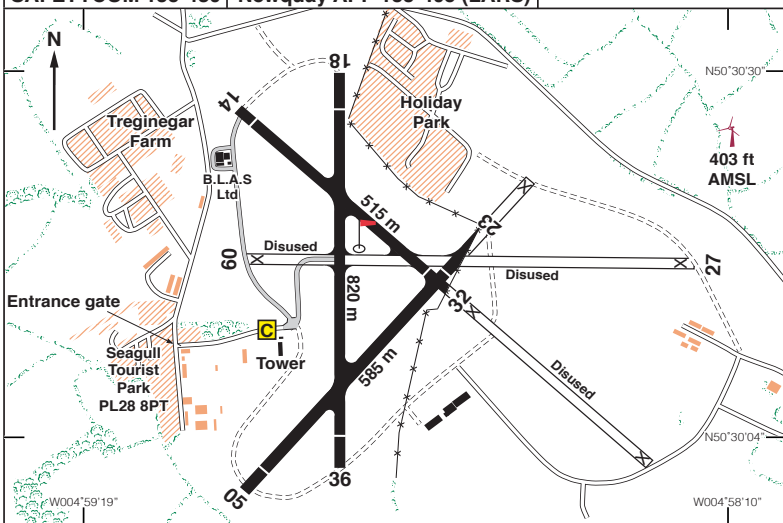


N50 30.27 W004 58.85

**ST MERRYN**

260ft AMSL

7 nm NE of Newquay.

**SAFETYCOM 135-480** **Newquay APP 133-405 (LARS)**

Rwy	Dim(m)	Surface	TORA(m)	LDA(m)	Lighting
18/36	820x26	Asphalt	Unlicensed		Nil
05/23	585x26	Asphalt	Unlicensed		Nil
14/32	515x26	Asphalt	Unlicensed		Nil

**Op hrs:** SR-SS. Strictly PPR by telephone.**Landing Fee:** On application.**Customs:** Nil.**Hangarage:** Nil. **Maintenance:** BLAS Ltd Tel 01841 529121 blasltd@outlook.com.**Remarks:** Operated by St Merryn Airfield, Padstow, PL28 8PT as a private unlicensed airfield.

Bears Down wind farm 3.4 km SSE of airfield. Turbine blade tips height 728ft amsl.  
 Wind turbine within circuit between runways 23 & disused 27.  
 Blade tip height 403ft amsl.

**Caution:** Extreme caution must be exercised by visiting pilots. Fences divide runways 14/32, 09/27 & 05/23 in half. Precautionary low pass mandatory. Working farm, be aware of farm vehicles. Pilots land at their own risk.

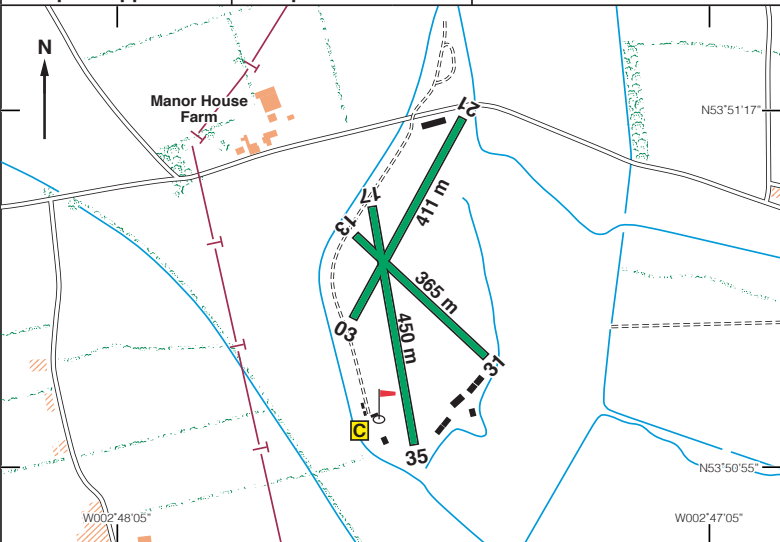
**Accommodation & Camping:** Seagull tourist park, PL28 8PT. Tel: 01841 520117.**Restaurants:** Available in St Merryn village.**Taxi/Car hire:** KJs Taxi Tel: 07875 637734.**Fuel:** Nil.**Mob:** 0776 7758429**Mob:** 07989 410046**Email:** st.merryn.flying@gmail.com**Website:** stmerrynairfield.yolasite.com

N53 51.13 W002 47.64 **ST MICHAELS** 16ft AMSL

7 nm NNW of Preston (Lancashire). **POL 112-10 289 25**

**SAFETYCOM 135-480** **Warton LARS 129-530**

**Liverpool App 119-855** **Liverpool ATIS 124-330**



Rwy	Dim(m)	Surface	TORA(m)	LDA(m)	Lighting
03/21	411x20	Grass	Unlicensed	Nil	Nil
13/31	365x20	Grass	Unlicensed	Nil	Nil
17/35	450x20	Grass	Unlicensed	Nil	Nil

**Op hrs:** Strictly PPR by telephone. SR-SS.

**Landing Fee:** £5 per day (Unlimited landings).

**Customs:** Nil.

**Hangarage:** Nil.

**Maintenance:** Nil.

**Remarks:** PPR by telephone. Microlight school is particularly active at weekends. Please be considerate of ab-initio students.

Although runways are marked by cut grass strips, all the field is useable. Take-offs are restricted to runways. Student pilots are encouraged to land into wind and not necessarily following cut runways.

**Circuits:** Join overhead 1500ft QFE. Circuits to the east at 500ft.

**Warnings:** Telecommunication poles and lines along north boundary of aerodrome following the road.

**Caution:** Dyke directly west of aerodrome. Avoid overflying local houses specifically the large houses in the trees 1 nm to the north east of the aerodrome.

**Fuel:** MOGAS by arrangement.

**Tel:** 01995641058 (Office)

**Mob:** 07960 525367

**Email:** northernmicros@aol.com

**Website:** <https://letsflymicrolights.com>

Changes 14 July 2022: Runway designators updated.

**Remarks: (continued)****Arrivals / Departures and Circuits when Boscombe CMATZ Closed:****Arrivals:** Joining height is 1500ft AAL.**Circuit height:** 1000ft AAL.**Departures:** No height restrictions. Climb as to minimise noise in the surrounding area.**Circuit Directions:**

Fixed Wing: Rwy 07, 30 LH; Rwy 12, 25 RH.

Rotary Wing: To/From Heli North - 07, 12 RH; 25, 30 LH.

Aircraft vacating Rwy 07/25 must vacate to S, and Rwy 12/30 must vacate to the W.

**Communications:** Acft should squawk SSR code 2660 without altimeter information when conducting circuits.**Noise Abatement and Circuits** - see Chart overleaf.**Caution:** Power cables cross final approach to Rwy 25, 200m from threshold. Beware of the surrounding Danger Areas.**Warnings:** Danger Areas D126, D127 Boscombe Down and Middle Wallop ATZ are located adjacent to the Thruxton ATZ. All are active as notified in the UK AIP. Part of Danger Area D126 overlaps with the NW extremity of the ATZ. Within this part of the ATZ, activities including helicopter flying, may take place below 500ft AGL and also UAS flying at or below 400ft AGL.

Operation of aircraft within the Thruxton ATZ is subject to a Letter of Agreement with the Danger Area Authority. Acft within the ATZ may accordingly cross the overlapping part of D126 at a recommended height of 800ft AAL (1119ft ALT) or above. At times that Rwy 25 is in use, acft on the crosswind leg may enter D126 at or above 700ft AAL climbing to 800ft AAL or above.

The notified Upper Limit of D126 (1400ft ALT/1081ft AAL) may from time to time be temporarily raised, as notified via NOTAM. During these times it is recommended that acft within the ATZ avoid D126.

Part of the final approach track to Rwy 23 Boscombe Down, passes through the lateral limits of the Thruxton ATZ. During CMATZ hours of operation, acft being provided ATS by Boscombe Down will transit the Thruxton ATZ above 1450ft AAL. Recommended arrival/departure with the intent of avoiding traffic above 1450ft AAL. Extensive military helicopter and jet operations can be anticipated at any time in the vicinity of Thruxton ATZ.

Authorised acft movements may take place outside notified AD/ATZ operating hours involving acft that do not require use of a licensed aerodrome.

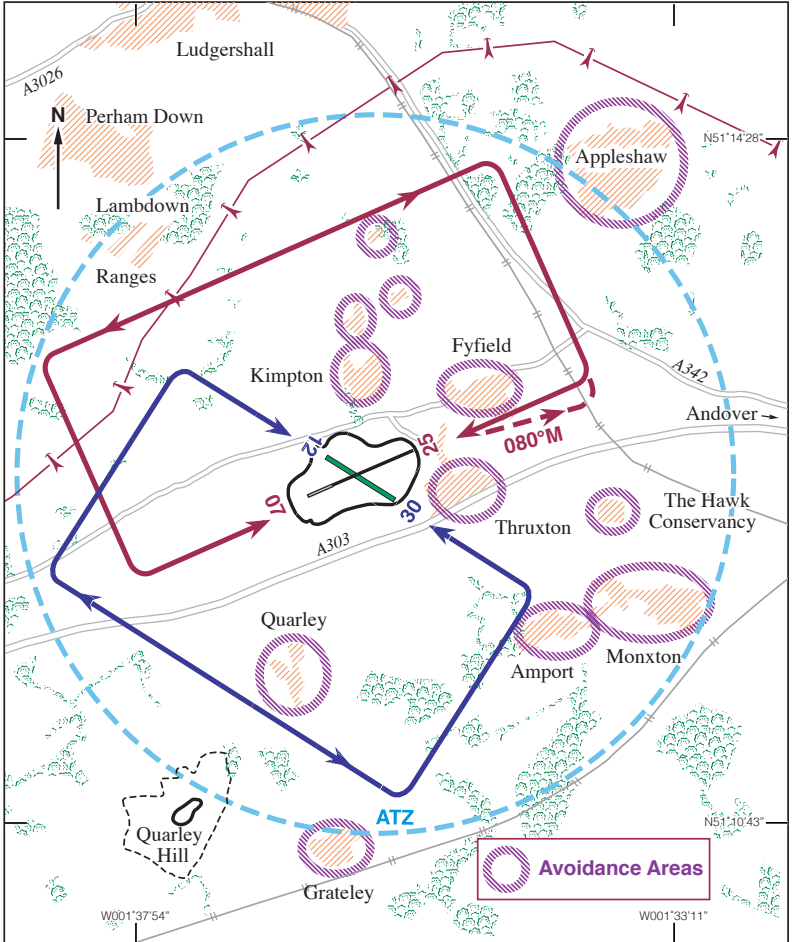
Two large birds of prey are released daily at 1430 (1330) from London Hill, approximately 800m southeast of Rwy 30 thld. Pilots are requested to avoid the area during this activity. A/G will notify when the activity is completed.

**Restaurant:** Jackaroo, Tel: 01264 882217.**Car Hire:** Andover self drive, Tel: 01264 771564,

Enterprise Rent-A-Car, Tel: 01264 366722.

**Fuel:** 100LL, Jet A1.  
Credit/Debit Card.**Tel:** 01264 772352 Tower**Tel:** 01264 772171 Admin**Email:** [airtraffic@thruptonairport.com](mailto:airtraffic@thruptonairport.com) (Tower)**Email:** [westernair@thruptonairport.com](mailto:westernair@thruptonairport.com)**Website:** *Under development*

## Thrxuton Circuits and Noise Abatement



### Circuits:

Unless otherwise advised by A/G, all circuits are 800ft QFE.

When notified by A/G, that Boscombe Down not active, circuit height 1000ft QFE.

No dead side on Rwy 07/25 due to Helicopters on south side.

Rwy 07/25 - Downwind leg must be to the north of Kimpton village and the large new house.

### Noise Abatement Procedures:

The nominal circuits shown are to be flown to avoid noise sensitive areas.

All departures from Rwy 07 should turn right **at the aerodrome boundary** to maintain a track of 080°M until clear of Fyfield village.