

EGHQ

N50 26.45 W004 59.72 **NEWQUAY** 388ft AMSL

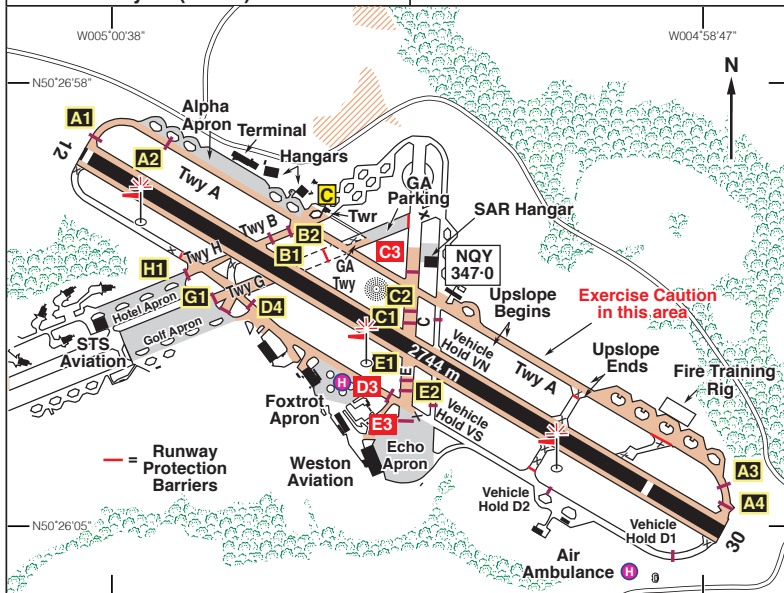
4 nm ENE of Newquay. **LND 114-20 054 30-7**

c/s Newquay APP 133-405 (LARS) TWR 134-380 GND 121-955 (when instructed)

RAD 127-930 ATIS 127-405 NDB 'NQY' 347-0 (on A/D)

ILS/DME Rwy 12 (122°M) '1 NEW' 110-50

ILS/DME Rwy 30 (302°M) '1 NWQ' 110-50



Rwy	Dim(m)	Surface	TORA(m)	LDA(m)	Lighting
12/30	2744x45	Asphalt/	12-2637†	12-2637	Ap Thr Rwy RCL PAPI 3°
		Concrete	30-2744†	30-2444	Ap Thr Rwy RCL PAPI 3°
† Take-off: Rwy 12 from intersection with Twy B1 - TORA 1920m. Rwy 12 from intersection with Twy C1 - TORA 1271m. Rwy 12 from intersection with Twy E1 - TORA 1222m. Rwy 30 from intersection with Twy B1 - TORA 743m. Rwy 30 from intersection with Twy C1 - TORA 1391m. Rwy 30 from intersection with Twy E1 - TORA 1441m.					

Op hrs: PPR 0645-2200 all other times by arrangement.

Landing Fee: On application. **Customs:** 24 hrs PNR.

Hangarage: PNR.

Maintenance: Limited, STS Aviation (UK CAA/EASA Part 145 approved).
www.stsaviationgroup.com

continued

Remarks: Operated by Cornwall Airport Ltd., Newquay Cornwall Airport St Mawgan, Newquay, Cornwall TR8 4RQ.

PPR before departure for all non-schedule movements. For non schedule movements between 1700-0900 hrs PPR to be obtained before 1500 hrs.

Inbound aircraft contact at least 10nm from the aerodrome.

High visibility clothing mandatory airside.

GA aircraft 3000 kg MTOW or less, not requiring handling will self position on the GA parking area SE of the Control Tower.

Parking at night will be under ground crew guidance.

Handling available from:

Flynqy, Tel: 01637 861744, Email: fly@flynqy.co.uk.

Website: www.flynqy.co.uk.

Weston Aviation, Tel: 01637 860551, Fax: 01637 860788.

Website: www.westonaviation.com.

Classic Air force/Air Atlantique, GA aircraft (visiting CAF only) under 2.5 MTOW or less. Location Echo Apron. Full briefing facilities available. PPR.

Email: classicopsnqy@live.co.uk, Website: www.classicairforce.com,

Tel: 01637 860717, Fax: 01637 860552.

Noise Abatement:

Departures - Aircraft less than 5700 kg MTOW climb straight ahead until above 1000ft aal before turning on track. Avoid Newquay Town and built up areas.

Aircraft above 5700 kg MTOW climb straight ahead until above 2000ft aal or across the coast before turning on track.

Arrivals - Propeller aircraft of more than 5700 kg MTOW must not join the final track to either runway below 1000ft aal.

Jet aircraft must not join the final approach track to either runway at a height of less than 1500ft aal.

Helicopters must avoid overflying the Terminal, Carnanton House and RAF St Mawgan Domestic site.

Warnings:

Elevated runway edge lights.

Bird concentrations may be present on approaches.

Possibility of terrain induced turbulence and wind shear when landing on Rwy 12 or 30.

Instrument approaches to Rwy 12 require approximately 20 nm flight over water.

Pilots are advised to carry the appropriate safety equipment.

Fuel: 100LL. Jet A1/F35.

Tel: 01637 861301 ATC

Tel: 01637 861744 Flynqy - GA PPR/Flight Training

Tel: 01637 860551 Weston Aviation - GA PPR

Fax: 01637 860940 Airport

Fax: 01637 861352 ATC

Website: www.cornwallairportnewquay.com