

POOLEYS FLIGHT GUIDE 2023

Elstree Aerodrome, Elstree

Hertfordshire WD6 3AW.

Tel: 020 8207 3749.

E-mail: editor@pooleys.com

AMENDMENT- AIRNOTE 1

AIRAC 01/2023 - 26th January 2023

Replacement/Additional Pages

31-32.....	Frequency Monitoring Code chart
111-112	Bicester
407-408.....	Lashenden/Headcorn
563-564.....	Oxford
743-744.....	Wolverhampton/Halfpenny Green
749-750.....	Wycombe Air Park (Booker)

AIRNOTES

Airnotes provide a comprehensive listing of all changes applicable to the current Flight Guide. These are updated every 28 days in line with the AIRAC cycle and are available via the Pooleys Website.

Changes notified since the last issue of Airnotes are identified by a 'bullet' (•) in the left-hand margin.

To obviate the necessity of incorporating lengthy manuscript amendments, it is suggested that pages which are subject to amendment be suitably annotated, and then refer to the Airnotes, as required, for details of the changes.

POOLEYS FLIGHT GUIDE 2023

AIRNOTES

AIRAC 01/2023 - (26th January 2023)

UK Flight Information Regions

Nil

CLASSIFICATION OF UK AIRSPACE

Nil

CHANNEL ISLANDS CTR/CTA

- 13 Paragraph 3, Procedures outside the Channel Islands Control Zone, sub para c Amend Pilots wishing to obtain pre-flight information contact details to:- Pilots wishing to obtain pre-flight information may also contact the FOST duty operations Tel: 01752 557550. Sub para e. Amend Brest ACC to:- Brest ACC or Rennes Approach/Info.

LOWER AIRSPACE RADAR SERVICE (LARS)

Nil

RADAR SERVICE - FL100 AND ABOVE (OUTSIDE CAS)

Nil

MILITARY AERODROME TRAFFIC ZONES (MATZ)

- 30 SCAMPTON MATZ withdrawn due to airfield closure.

FREQUENCY MONITORING CODES

- 32 Norwich, add SSR code 7350 and add to table, Norwich Radar 119.355
32 Amend table callsigns to 'Radar' for the following, Aberdeen; Bournemouth; Doncaster; Edinburgh; Glasgow; Leeds; Liverpool; Newcastle; Oxford & Southend.

DACS and DAAIS

- 44 EG R002 Devonport remarks: Amend Weston Mil HLS to Kinterbury Point (KP) HLS.

NAVIGATIONAL AIDS IN THE UK

Nil

AERODROMES

- 68 **ABERDEEN/Dyce** Add FMC. Pilots operating in the Aberdeen area of responsibility, but intending to remain outside Class D airspace within the area bounded by the following coordinates and maintaining a listening watch only on Aberdeen Radar frequency, 119.055, are encouraged to select SSR code 4270.
73 **ALDERNEY** Fuel: Add fuel Jet A1.
88 **BARRA** Op hrs: Amend Sunday times to, Sun 1100-1215.
111 **BICESTER** Com/Nav: Replace SAFETYCOM with c/s Bicester Traffic 118.390.
112 **BICESTER** Amend circuit height from 800ft AAL to 1000ft AAL.
Amend Rwy 06 -LH description to: 240m Clearway with a displaced threshold.
Curved final approach to avoid Bicester Town and Caversfield village.

- 114 BIGGIN HILL** Building name changes:
RAS amended to, JETFM, Signature FBO amended to, Jetex FBO.
- 130 BLACKPOOL** Rwy 13/31: LDA for Rwy 13 amended from 970m to 852m.
- 131 BLACKPOOL** Add to the VRP Flights note:
During the notified hours of Warton Radar, VFR traffic departing Blackpool in a southerly direction should anticipate departure instructions to route via St Anne's Pier, then Southport Pier, not above altitude 1500ft AMSL until clear of Warton MATZ.
- 202 COAL ASTON** Add avoid area around the built up area bottom right of the graphic.
See amended chart at www.pooleys.com/pooleys-uk-flight-guide-amendments/
- 207 COMPTON ABBAS** Add Helicopter Operations: Join long final (5 miles) for designated runway, giving way to any established circuit traffic. Parking area to the south east of the aerodrome.
- 241 DONCASTER SHEFFIELD** Hold L1 renamed to L.
- 262 EAST MIDLANDS** Add Hot Spot 2 centred on taxiway junction A & G.
HS Note: Potential routing error. Taxiing west on Twy A for Rwy 09 departure, be aware of potential to inadvertently pass Twy G.
- 278 EDINBURGH** Disused area between holds S1 & M4 now an Apron.
Lit windsleeve added adjacent to Hold A11.
- 286 ELSTREE** Unlicensed grass strip added north of Rwy 08/26.
- 304 FARNBOROUGH** Op hrs notes: amend to:-
AD may close earlier if there is no scheduled traffic. See NOTAMs.
- 306 FARNBOROUGH** Route waypoints: Move Fleet Ponds & Worplesdon Station to the VRPs paragraph along with Bagshot and Hook.
- 345 GUERNSEY** Com/Nav: Amend Jersey Control 120•455 to 120•450.
- 379 ISLE OF MAN** Rwy 08/26 length amended to 2110m with the starter extensions at both ends being removed. Hot spots added:-
HS1 centred on hold D1. Note: Hold D1 has a sharp turn from area Whiskey.
HS2 just before the start of Rwy 03. Note: Kitesurfing activity in Rwy 03 approach and Rwy 21 Take-off area.
- 380 ISLE OF MAN** Rwy Dimensions: Rwy 08/26 length amended to 2110m x 46m.
Remove last 2 lines regarding 'Full width departures'
- 407 LASHENDEN/Headcorn** Boundary fenceline added. Holding positions added.
'10' next to Rwy 10 thld, 'A' at Rwy 28 thld and 'B' at the beginning of Rwy 28.
See amended chart at www.pooleys.com/pooleys-uk-flight-guide-amendments/
- 440 LONDON CITY** Remarks: 4th line down, amend Thames Radar to Thames Director.
- 484 MANCHESTER/Barton** Op hrs: Amend to, 0900-SS; Summer 0800-1700 or SS whichever earlier, and by arrangement.
- 494 MIDDLE WALLOP** Caution: Remove Model aircraft sentence.
- 519 NEWQUAY** Op hrs: Amend to 0630-2200 all other times by arrangement.
- 524 NORTHAMPTON/Sywell** Taxiway A extended. Op hrs amended to:-
Mon Closed, Tue-Sun (Summer) 0800-1700 UTC, (Winter) 0900-1800 UTC.
- 535 NORTH WEALD** New Cafe opened, Rosey Lea Cafe and Tea rooms, open Mon-Fri 1000-1600, Sat 0900-1700, Sun 0900-1600. Tel: 01992 350540
- 538 NORWICH** Op hrs: Amend to, 0600-2130. (31st October 2022 - 26th March 2023 0600-2000).
- 557 OLD WARDEN/SHUTTLEWORTH** Op hrs: Amend to:-
0600 or SR - 30 whichever is later - SS + 30.
- 558 OLD WARDEN/SHUTTLEWORTH** Contact details: Amend first number to:-
01767 627901.
- 564 OXFORD** New taxiway B and holds. Old taxiway B now disused.
See amended chart at www.pooleys.com/pooleys-uk-flight-guide-amendments/
- 565 OXFORD** Customs: Amend to:-
All inbound/outbound flights must be approved by Operations.
Following Prior Notice required:
- 2 hours prior to departure for all flights to/from outside the UK;
 - All flights requiring Special Branch - 12 hrs notice, Tel: 01865 290660; *Continued*

565 OXFORD *Continued*

- UK GAR required prior to all international arrivals and departures.

Remarks: 4th line down, amend Oxford App to Oxford Radar.

Contact details: Remove all Fax numbers.

Website: amend to www.londonoxfordairport.com

612 ST ATHAN Maintenance Area G added north of hold G.

Apron K1 added south of Apron E.

655 SOUTHEND Remarks: 10th line down, amend Southend App to Southend Radar.

673 STURGATE Warnings: Amend 'Due to RAF Scampton EG-R313' to read 'Due to EG-R313'.

678 SWANSEA Rwy 04/22 width reduced to 30m. New holds added C, D, E, F & G.

New Taxiway C added between Apron 1 & 2.

See amended chart at www.pooleys.com/pooleys-uk-flight-guide-amendments/

686 TEESSIDE INTERNATIONAL Handling: Amend Jet Centre email to:-

jetcentre@willisaviation.com. Contact details: Add ATIS Tel: 01325 331054.

698 TIREE Declared distances revised for Rwy 05/23.

Rwy	Dim(m)	TORA	LDA
05/23	1481x30	05-1411	05-1411
		23-1402	23-1361

711 WALNEY Helipad site H removed along with adjacent building, associated taxiway amended to disused area.

736 WICK Declared distances revised for Rwy 13/31.

Rwy	Dim(m)	TORA	LDA
13/31	1831x45	13-1746	13-1409
		31-1714	13-1410

Rwy 31 Intersection with Twy C - TORA 1339m.

Rwy 31 Intersection with Twy F - TORA 1087m.

738 WILLOW FARM Caution: Amend Waddington/Scampton MATZ to read Waddington MATZ.

743 WOLVERHAMPTON/Halfpenny Green Remarks: Amend paragraph starting

Hovering helicopters to read:-

"Hovering helicopters shall maintain a distance of 60m from any active runway or taxiway, fence-lines, buildings and public viewing area."

Noise Abatement: Amend paragraph to the following

Noise Abatement: Runway 16: All departures at the airfield boundary should make a track change of 10 degrees to the right. No left turns are to be made below 600ft QFE. No direct overflights of Highgate Farm are permitted.

Runway 34: No FANSTOP are permitted until passed Whittimere Farm, 1000 m beyond end of runway. Traffic turning left into the visual circuit are to avoid direct overflights of Claverley and Bobbington Village.

Runway 28/10: Departures, approaches and visual circuits are to avoid direct overflights of Bobbington Village and Primary school.

All visual circuits are to be completed within the ATZ.

See amended chart at www.pooleys.com/pooleys-uk-flight-guide-amendments/

749 WYCOMBE AIR PARK/Booker Rwy 35 withdrawn.

HTA 'E' removed and Heli Hold 'S' removed.

See amended chart at www.pooleys.com/pooleys-uk-flight-guide-amendments/

GOVERNMENT AERODROMES

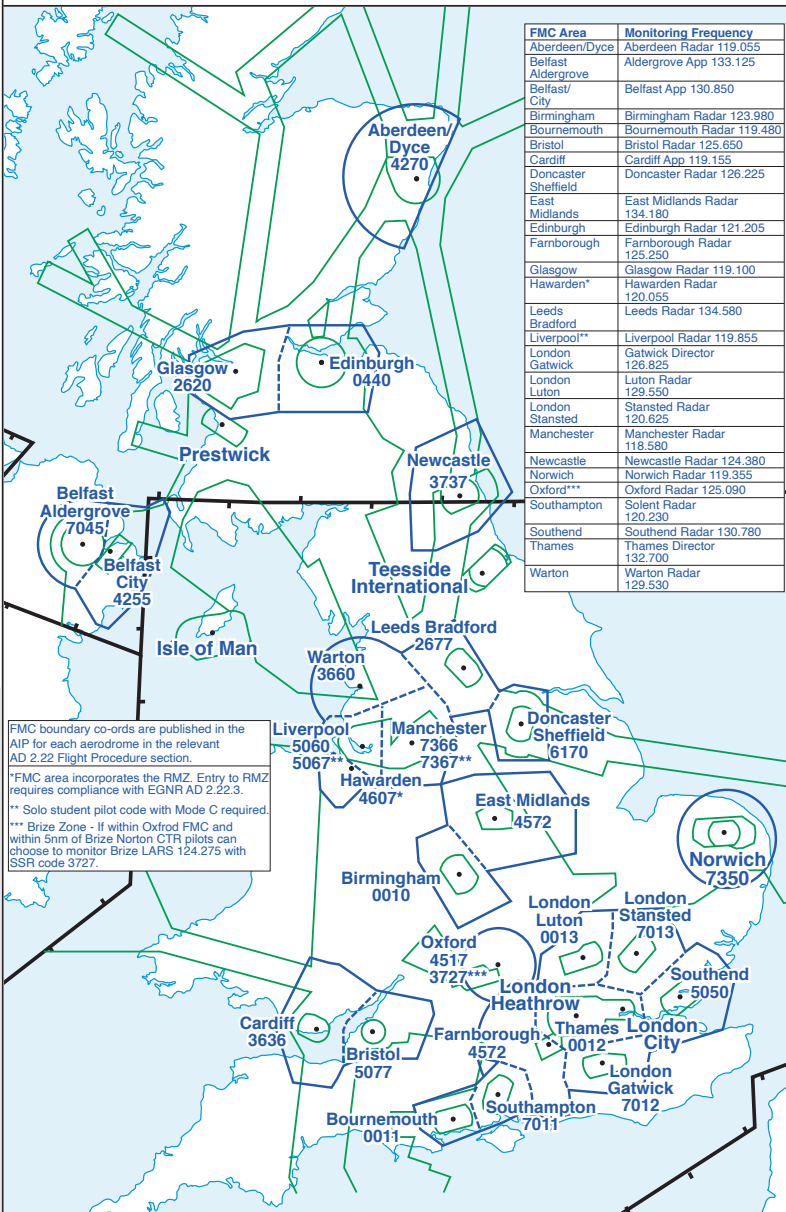
791 SCAMPTON Withdrawn due to airfield closure.

MILITARY AERODROME TRAFFIC ZONES (MATZ)

Notes (continued)

- * 4 Aerodrome opened on very limited occasions when advised by NOTAM or Supplement.
- * 5 Non-standard North Easterly stub SFC to 3000ft.
- * 6 Helicopters tasked to operate in EG D208 are required to call Lakenheath ATC to notify entry to EG D208 prior to penetrating the CMATZ.
No restrictions will be imposed on helicopters which operate within that portion of their north-easterly stub which is also within the lateral limits of EG D208, provided that the aircraft remain at or below 800ft amsl.
- * 7 Non-standard reference point aligned with common radar touchdown point.
- * 8 Non-standard extension to both stubs - 5 nm South of extended centre-lines.
- * 9 Non-standard demarcation of the 5 nm circles which are joined by a straight line at their most Easterly points.
- *10 Odiham Approach, except weekends and PHs, when the task may be carried out by Farnborough on 125•250. →
- *12 Weekend and out of hours, contact Ternhill Radio for Traffic Information on 122•100.
- *13 Non-standard MATZ with the following dimensions:
 - Lateral: A rectangle of airspace, 20 nm x 6 nm. The major axis is centred on the ARP, aligned with the major runway headings 071° (T)/ 251° (T) and off-set 1 nm to the south.
 - Vertical: The portion of the rectangle contained within the part circle radius 5 nm centred on the ARP extends from the surface to 3000ft aal. The remainder extends from 1000ft aal to 3000ft aal.
 - Warning:** The northern sector of the ATZ is not wholly contained within the MATZ.
- *14 Civilian traffic joining Wittering will be given Wittering Tower freq 127•975. On no account free-call Wittering Tower for zone crossing service.

FREQUENCY MONITORING CODE AREAS



FMC Area	Monitoring Frequency
Aberdeen/Dyce	Aberdeen Radar 119.055
Belfast Aldergrove	Aldergrove App 133.125
Belfast/ City	Belfast App 130.850
Birmingham	Birmingham Radar 123.980
Bournemouth	Bournemouth Radar 119.480
Bristol	Bristol Radar 125.650
Cardiff	Cardiff App 119.155
Doncaster Sheffield	Doncaster Radar 126.225
East Midlands	East Midlands Radar 134.180
Edinburgh	Edinburgh Radar 121.205
Farnborough	Farnborough Radar 125.250
Glasgow	Glasgow Radar 119.100
Hawarden*	Hawarden Radar 120.055
Leeds Bradford	Leeds Radar 134.580
Liverpool**	Liverpool Radar 119.855
London Gatwick	London Director 126.825
London Luton	Luton Radar 129.550
London Stansted	Stansted Radar 120.625
Manchester	Manchester Radar 118.580
Newcastle	Newcastle Radar 124.380
Norwich	Norwich Radar 119.355
Oxford***	Oxford Radar 125.090
Southampton	Solent Radar 120.230
Southend	Southend Radar 130.780
Thames	Thames Director 132.700
Warton	Warton Radar 129.530

FMC boundary co-ords are published in the AIP for each aerodrome in the relevant AD 2.22 Flight Procedure section.

*FMC area incorporates the RMZ. Entry to RMZ requires compliance with EGNR AD 2.22.3.

** Solo student pilot code with Mode C required.

*** Brize Zone - If within Oxford FMC and within 5nm of Brize Norton CTR pilots can choose to monitor Brize LARS 124.275 with SSR code 3727.

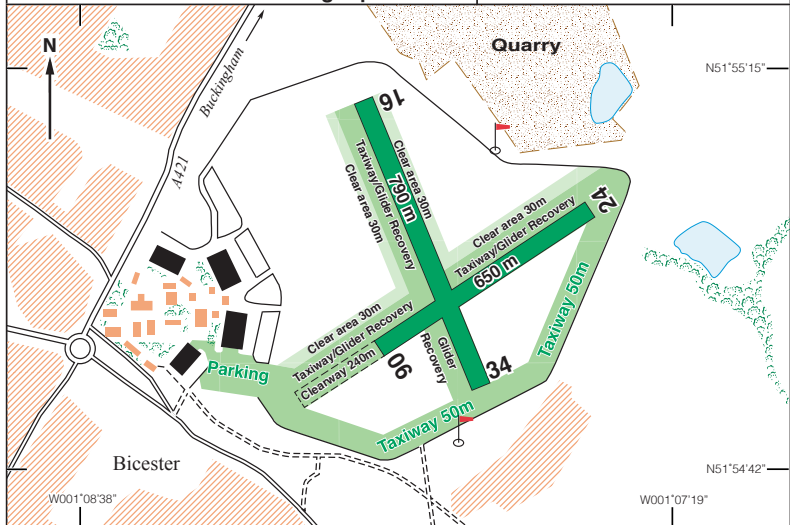
Changes 26/01/2023: Norwich SSR code added, call signs changed to Radar.

N51 54.97 W001 07.93

BICESTER

267ft AMSL

1.04 nm NE of Bicester.

c/s Bicester Traffic 118-390**Oxford Radar 125-090 Listening Squawk 4517**

Rwy	Dim(m)	Surface	TORA(m)/LDA(m)	Lighting	Markings
06/24	650x50	Grass	650 Unlicensed	Nil	Nil
16/34	790x50	Grass	790 Unlicensed	Nil	Nil

Op Hrs: Strictly PPR. An Arrival/Departure briefing essential.**Landing Fee:** See website for charges.**Customs:** Nil.**Hangarage:** On request.**Maintenance:** Nil.**Remarks:** Operated by The Bicester Aerodrome Company Ltd, Buckingham Road, Bicester, Oxfordshire OX27 8AL. Daylight VFR operations only.

Arrival/Departure briefing essential - Available via website and provided with PPR request. Standard overhead joins preferred (2000ft AAL).

Large model acft activity 7 days a week operating up to 3000ft AAL to the NE outside the peritrack. Sunday operation of Paramotor training in south west corner of the AD.

Noise Abatement Procedures - see overleaf.**Warnings:** Grass cutting operations maybe taking place.

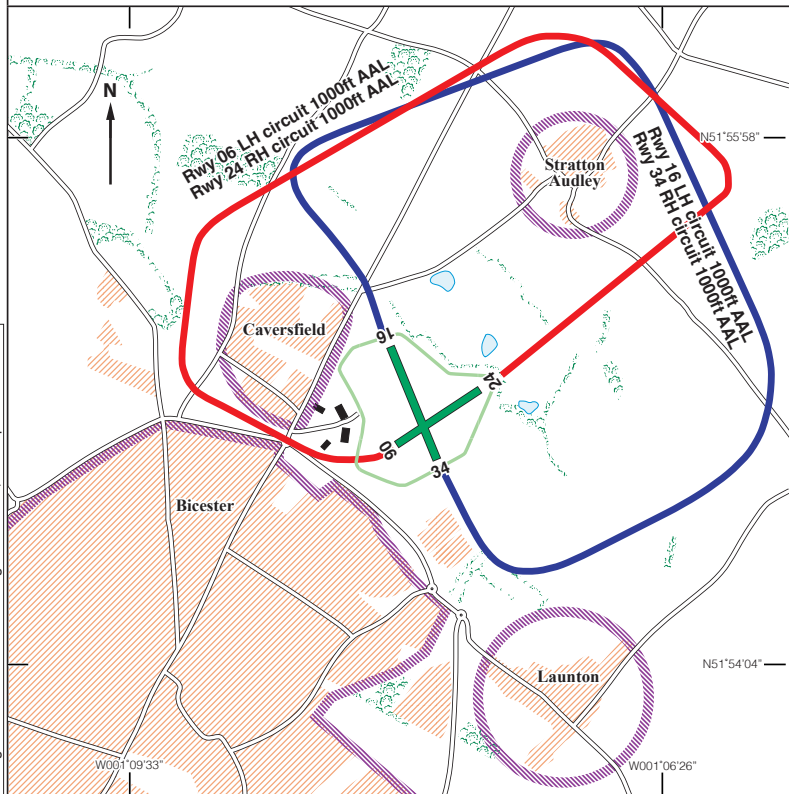
Aerotow Gliding Operations - Possibility of high speed low-level arrivals.

Aerobatics and formation flying common.

Danger Area 129 Weston-on-the-Green to SSW of the airfield.

Restaurant: Refreshments only. Bicester Heritage by prior arrangement.**Fuel:** 100LL - with PPR request**Tel:** 01869 254841 Aviation**Email:** land@bicesteraero.com**Website:** www.bicesteraero.com

BICESTER Noise Abatement Procedures



All visiting pilots must report to the Control 'C' located at the aircraft hangar, please complete the aircraft movement log and pay the required landing fee.

Avoid Bicester Town, all villages and farms whenever possible by following the designated routes.

All circuits at 1000ft AAL.

Rwy 06 - LH: 240m Clearway with a displaced threshold. Curved final approach to avoid Bicester Town and Caversfield village.

Rwy 24 - RH: Engine failure after take-off, emergency landing options are severely limited. Early right turn to avoid Bicester Town.

Rwy 16 - LH: Preferred Runway Avoid Stratton Audley and Launton villages.

Rwy 34 - RH: Preferred Runway Avoid Stratton Audley and Launton villages.

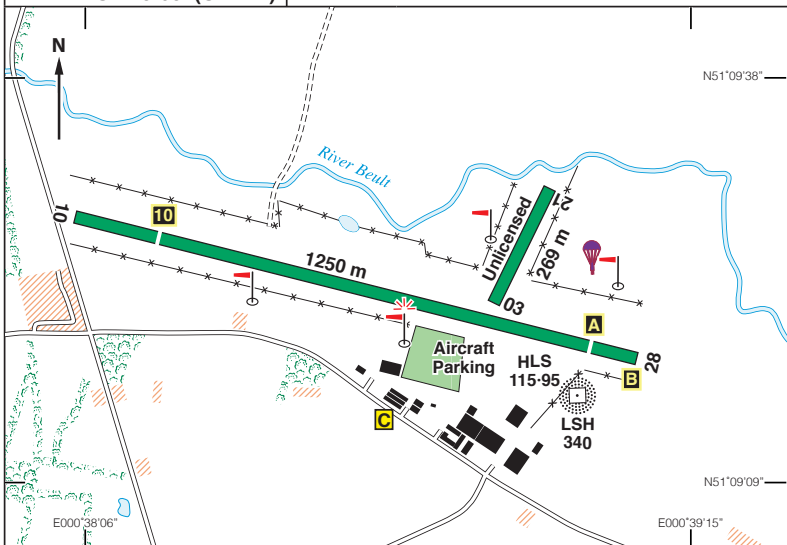
EGKH

N51 09.38 E000 38.67 **LASHENDEN/Headcorn** 72ft AMSL

1 nm SE of Headcorn.

c/s Headcorn Radio 122-210 A/G | **NDB 'LSH' 340-0 (On A/D)**

DME 'HLS' 115-95 (On A/D)



Rwy	Dim(m)	Surface	TORA(m)	LDA(m)	Lighting
10/28	1250x30	Grass	10-1150 28-1100	10-1000 28-1000	Portable electric - PNR
03/21	269x30	Grass	Unlicensed		

Op hrs: Strictly PPR by telephone. 0900–SS, and by arrangement.

Landing Fee: Single £15.00; Microlights £13.00; Twin £25.00.

Hangarage: Nil. **Maintenance:** Available. **Customs:** Available.

Remarks: Operated by Mr. J. P. A. Freeman, Shenley Farms (Engineering) Ltd, Headcorn Aerodrome, Kent TN27 9HX. Licensed aerodrome. PPR by telephone. Aerodrome licensed for night use. Free-fall parachuting from up to FL150. Parachute DZ 300m NE of Rwy 28 thld. Whilst parachuting in progress, no overhead joins, all aircraft to join downwind. Rotary wing aircraft are to obtain clearance prior to engaging rotors. All aircraft to contact Headcorn Radio before taxi.

Circuits: Fixed Wing at 1000ft aal, LH. Rotary LH on 10 at 700ft aal, RH on 28 at 1000ft. Aircraft departing Rwy 10/28 are to climb to 500ft QFE before turning keeping clear of built-up areas. All aircraft are to avoid overflying local villages.

Caution: Taxi with care due to undulating ground in some parts of the taxiway.

Warnings: Hill at 522ft amsl, 013.5°T, 3.7 nm from ARP.

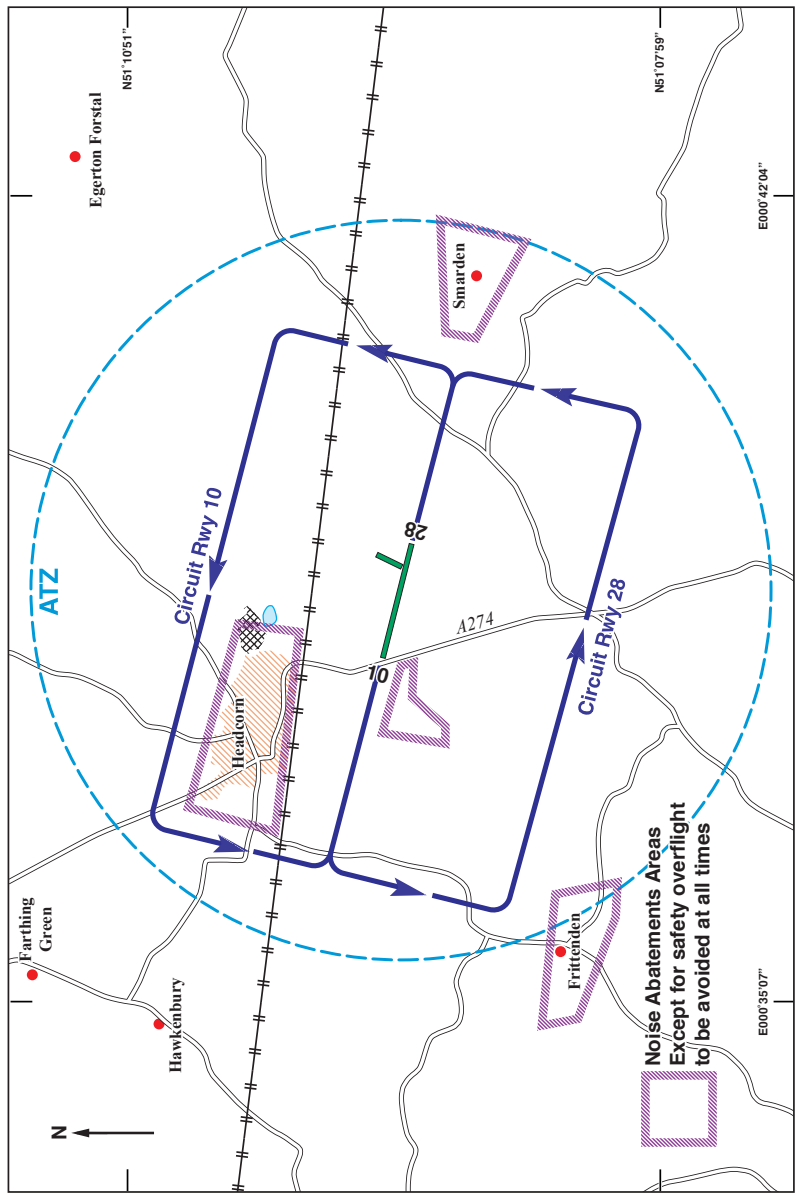
Restaurant: Available. **Car Hire:** Available.

Fuel: 100LL, Jet A1, UL91.

Tel: 01622 890226, 890236 Night

Website: www.headcornaerodrome.co.uk

LASHENDEN/Headcorn Noise Sensitive Areas

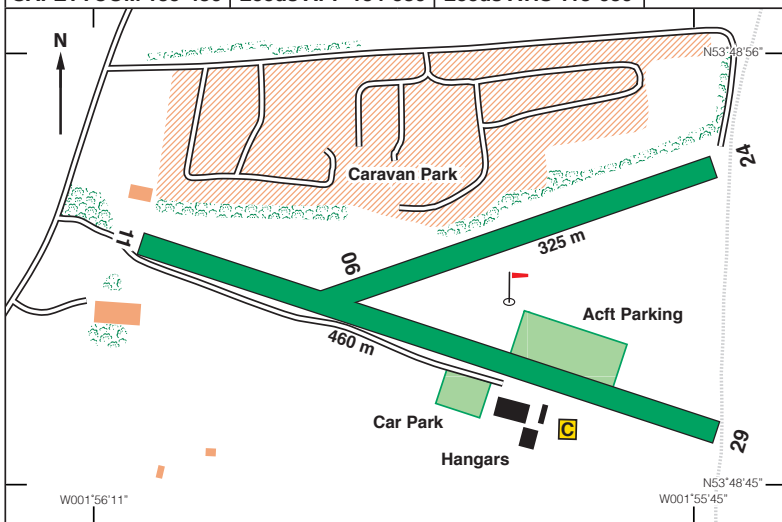


Noise Abatement Areas
Except for safety overflight
to be avoided at all times

N53 48.83 W001 55.89 **OXENHOPE** 1150ft AMSL

6 nm WNW of Bradford. **POL 112-10 058 7-3**

SAFETYCOM 135-480 | **Leeds APP 134-580** | **Leeds ATIS 118-030**



Rwy	Dim(m)	Surface	TORA(m)	LDA(m)	Lighting
11/29	460x15	Grass	Unlicensed	Nil	Nil
06/24	325x10	Grass	Unlicensed	Nil	Nil

Rwy 29 downslope first 120 m.

Op hrs: PPR SR-SS.

Landing Fee: Donations accepted. **Customs:** Nil.

Hangarage: Nil. **Maintenance:** Nil.

Remarks: Operated by Mr David Wasley, Upwood House, Black Moor Road, Oxenhope, West Yorks, BD22 9SS. Challenging airfield, PPR essential. Airfield situated below Leeds Bradford Class D Airspace (Base 3000 ft Leeds QNH). First 120m Rwy 29 has a marked downslope. No Helicopters.

Warnings: Turbulence from hangars and trees with strong wind. Downdraughts experienced on approach to Rwy 24 & 11. Manoeuvring areas are rough and undulating. Wind farm 2 nm South of airfield up to 2300ft amsl. Farm machinery regularly use the airfield. First 100m of Rwy 24 can get waterlogged all year round, red/white cones mark extent of safe manoeuvring area. Dry stone walls at Thld of Rwy 24 & 29.

Restaurant: Non on airfield but available in Haworth 2 miles away.

Taxi/Car hire: Local taxis available.

Fuel: Nil. **Tel:** 01535 642061(Owner) **Email:** oxenhope_airfield@btinternet.com

EGBO

N52 31.07 W002 15.58 **WOLVERHAMPTON/Halfpenny Green** 283ft AMSL

Op hrs: PPR. Winter: 0900-1700. Summer: 0900-1800 daily.

Landing Fee: Microlights £9.00; Up to 3 tonnes - Single engine aircraft/Helis £12.00; Twin aircraft £25.00; PPG, SSDR, Flexwing £7. Over 3 tonnes on application.

Customs: By arrangement during published hours via AFIS Fax or E-mail.

Hangarage: Limited.

Maintenance: Available.

Remarks: Operated by Wolverhampton Airport Ltd., Wolverhampton Airport, Stourbridge, West Midlands DY7 5DY.

High visibility clothing is recommended airside.

Pilots are responsible for their passengers whilst airside.

Only Rwy 16/34 licensed for night use.

Rwy 16/34 shallow depression on the eastern edge of Rwy close to Rwy 34 PAPIs will hold water after rain. Rwy 16/34 shallow depression crosses the runway north of Rwy 34 thld.

Taxi speeds are to be kept to a minimum. Parts of taxiway A are undulating and pilots are to take special care by the pedestrian crossing opposite the Control Tower.

Runway 04/22 use restricted to non jet aircraft less than 2 tonnes.

Circuits: Fixed-wing at 1000ft QFE, all LH; Rotary at 800ft QFE, all RH.

Autogyros are to fly the standard fixed wing circuits and profile. Prefix callsign with "Gyro".

Due helicopters operating right hand circuits at 800ft QFE, joining aircraft are not to descend below 1300ft QFE on deadside.

Hovering helicopters shall maintain a distance of 60m from any active runway or taxiway, fencelines, buildings and public viewing area.

Helicopters taxiing to the fuel pads are asked to operate their aircraft so as to minimise the effect of their downdraft on the nearby hangars.

Noise Abatement: Runway 16: All departures at the airfield boundary should make a track change of 10 degrees to the right. No left turns are to be made below 600ft QFE. No direct overflights of Highgate Farm are permitted.

Runway 34: No FANSTOP are permitted until passed Whittimere Farm, 1000 m beyond end of runway. Traffic turning left into the visual circuit are to avoid direct overflights of Claverley and Bobbington Village.

Runway 28/10: Departures, approaches and visual circuits are to avoid direct overflights of Bobbington Village and Primary school.

All visual circuits are to be completed within the ATZ.

Warnings: Helicopters are not to hover within 50m of the DME/NDB Masts.

Restaurants: Cafe open daily.

Taxis: Tel: 01384 404040, Tel: 01902 898080.

Fuel: 100LL, Jet A1 (FSII on request), UL91.

Fuel Bay operates a one-way system, entry at west end, exit at east, aircraft to draw up with pumps on starboard side.

Tel: 01384 221378 AFIS.

Tel: 01384 221350 Airport Admin.

Fax: 01384 221514 AFIS.

Fax: 01384 221328 Airport Admin.

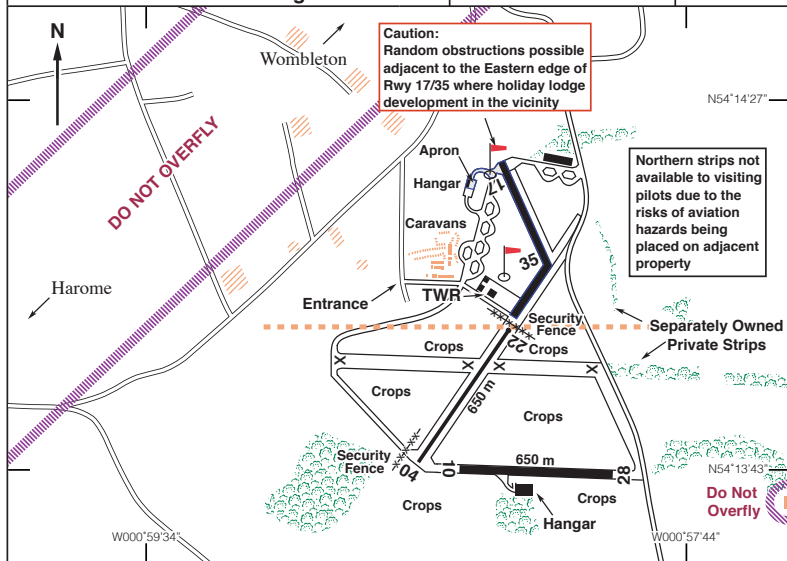
Email: atc@wolverhamptonairport.co.uk

Website: www.wolverhamptonairport.co.uk

N54 14.02 W000 58.13

WOMBLETON

120ft AMSL

2.5 nm SW of Kirkbymoorside.
17 nm NNE York.**OTR 113-90 320 44-3**
POL 112-10 057 49-6**Recommend contact Leeming Zone 133-375****SAFETYCOM 135-480**

Rwy	Dim(m)	Surface	TORA(m)	LDA(m)	Lighting
04/22	650x15	Asphalt	Unclassified	Nil	Nil
10/28	650x15	Asphalt	Unclassified	Nil	Nil

Op hrs: Strictly PPR.**Landing Fee:** Commercial on application.**Customs:** Nil.**Hangarage:** Available.**Maintenance:** Limited.

Remarks: Unclassified airfield operated by Swift Aircraft Ltd. Strictly PPR and only visitors authorised by Swift Aircraft. Aerobatic training is operated around the area. Avoid overflying any habitation within 1 nm of the airfield and within the areas identified above.

Circuits at 1000ft, RH on 04 & 10; Microlights at 500ft, RH on 04 & 28. Windsock on Tower. All pilots are required to enter their flight details in the airfield log.

Warnings:

- Some surfaces on the airfield are rough with the presence of loose stones.
- Vehicles, people, machinery, model aircraft and animals may be encountered.
- Aircraft may be operating from the two separately owned Northern private airstrips use of which by visiting pilots is currently suspended due to risk of neighbour interference.
- Tall trees on approaches to Rwy 10/28.
- Farm, public road and 30ft trees on approach to Rwy 28.

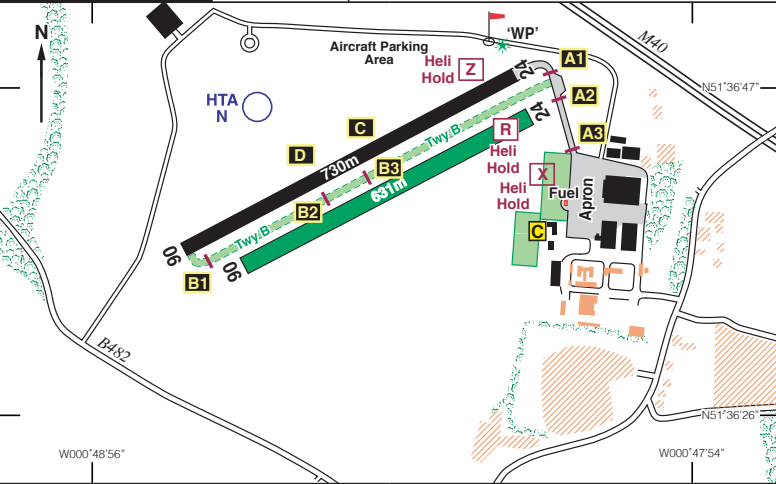
Fuel: 100LL.**Tel/Fax:** 01751 432356.

EGTB (HYC)

N51 36.70 W000 48.50 **WYCOMBE AIR PARK/Booker** 513ft AMSL

2.5 nm SW of High Wycombe. **CPT 114-35 065 17**

c/s Wycombe Radio 126-555 A/G



Rwy	Dim(m)	Surface	TORA(m)	LDA(m)	Lighting
06/24	730x23	Asphalt	06-730 24-730	06-730 24-730	Thr Rwy APAPI 4° Thr Rwy APAPI 4°
06/24	631x23	Grass	06-631 24-631	06-631 24-631	Nil Nil IBn 'WP' Gn

Op hrs: PPR. 0900L-1730L.

Landing Fee: Minimum charge £14 inc VAT **Customs:** PNR.

Hangarage: Limited. **Maintenance:** Fixed wing & Helicopter available.

Remarks: Operated by Airways Aero Associations Ltd. PPR essential. Noise Abatement Procedures in Force - pilots must obtain briefing before departure. No ATC, pilots are responsible at all times for lookout and traffic separation. Joining aeroplanes are to position to overfly the runway in use at 1200ft QFE, on the runway QDM. When overhead the midpoint of the runway, turn left or right (depending on the circuit direction) to level at circuit height 1000ft QFE on the crosswind leg prior to turning downwind.

Variable Circuits: - see overleaf. Visit website for video of circuit procedures. Helicopter circuit 750ft QFE and inside fixed wing circuit.

Caution: Intensive tug glider launching. When powered fixed wing are operating left hand circuits, gliders will operate right hand. When powered fixed wing are operating right hand circuits, gliders will operate left hand circuits. Grass areas liable to waterlogging. Helis to remain well clear of houses to the east.

Warnings: High ground rising to 442ft amsl 2.5 nm to the SW with radio mast (Lgtd) 528ft amsl. Non standard markings on main apron do not guarantee wing-tip clearance, taxi with extreme caution. No overhead transits of aircraft due to gliding activity.

Restaurant: Licensed Restaurant (7 days a week), Tel: 01494 556923.

Fuel: 100LL, Jet A1.

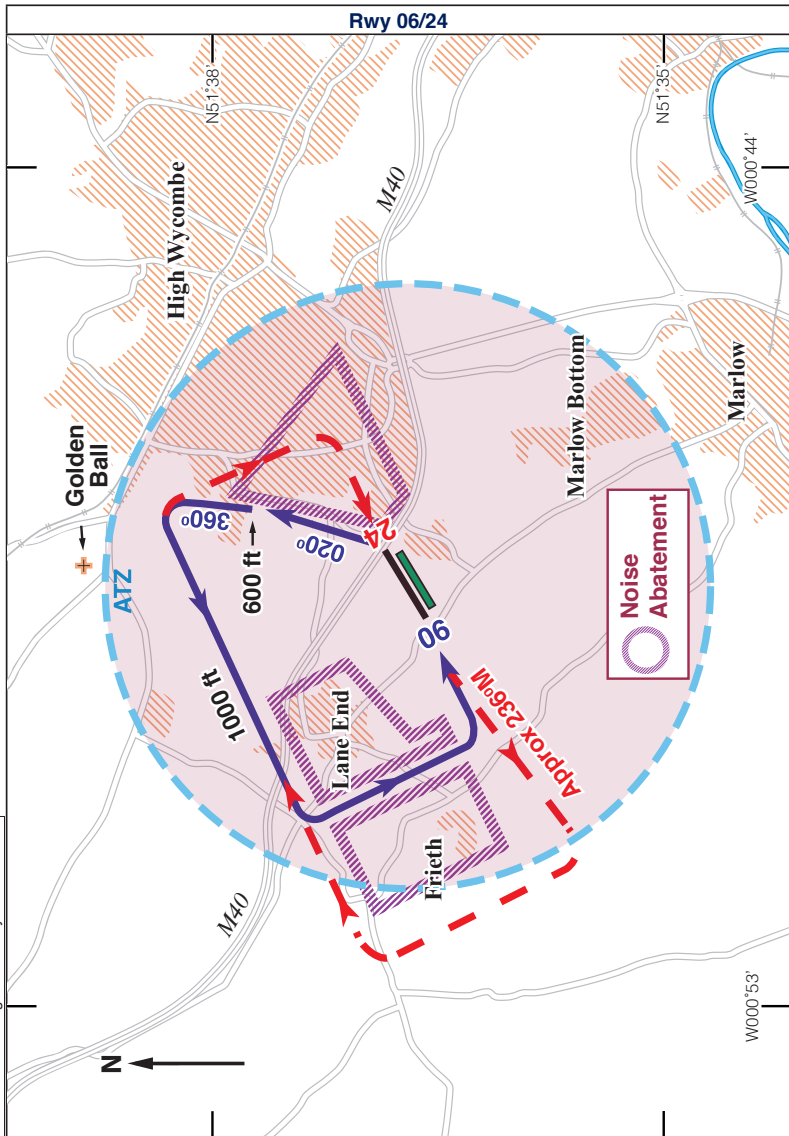
Tel: 01494 443737 (Ops/PPR)

Website: www.wycombeairpark.co.uk

Changes 26/01/2023: Rwy 35 withdrawn, HTA 'E' and Heli Hold 'S' removed.

WYCOMBE AIR PARK/Booker – Circuits:

Rwy 06/24



Pilots must obtain briefing on Noise Abatement Procedures before departure. Helicopters should join from the north at the 'Golden Ball' at 750ft QFE.

Changes 26/01/2023: Circuit diagram for Rwy 35 withdrawn.