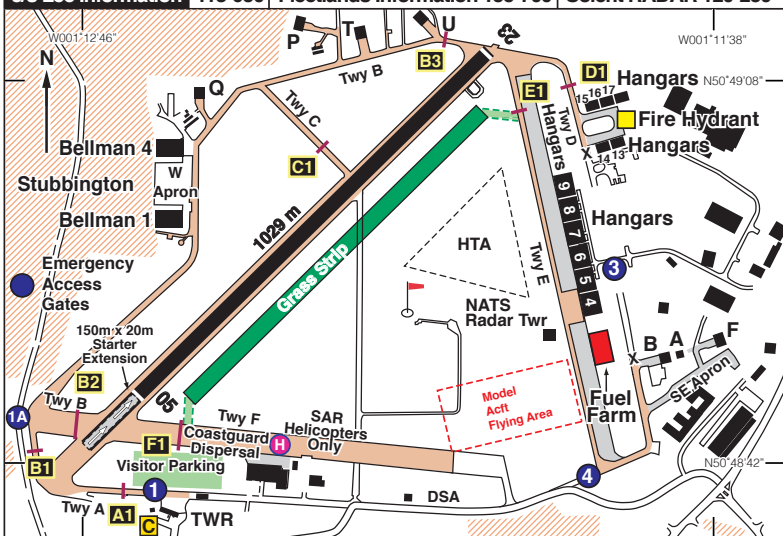


N50 48.88 W001 12.33 **LEE-ON-SOLENT (DAEDALUS)**

32ft AMSL

4 nm S of Fareham.

c/s Lee Information	118-930	Fleetlands Information	135-700	Solent RADAR	120-230
----------------------------	----------------	-------------------------------	----------------	---------------------	----------------



Rwy	Dim(m)	Surface	TORA(m)	LDA(m)	Lighting
05/23	1029x30	Asphalt	05-1179 23-1026	05-1026 23-1026	Nil Nil

Op hrs: 0900-1800 (Sum), 0900-SS (Win) Daily. Strictly PPR - Visitors briefing required.

Landing Fee: Published on website.

Customs: Mandatory out of hours agreement apply.

Hangarage: Contact Airport manager.

Maintenance: See website for based companies.

Remarks: Operated by Regional & City Airports Ltd, Solent Airport, Daedalus, Lee-on-the-Solent, Hampshire, PO13 9FZ. CAA Licensed aerodrome.

Acft approaching Lee-on-Solent AD are encouraged to contact Solent Radar on 120-230 for ATS prior to contacting Lee Radio.

Fleetlands ATZ is to be avoided unless two-way contact is made on 135-700.

Mandatory PPR and Visitor Briefing tool online at

http://www.solentairport.co.uk/solent_airport/pilotbriefing.aspx

Caution: Southampton Controlled Airspace 3 nm to NW.

Grass strip is not licensed and should only be used at pilot's discretion.

continued

Remarks (continued):

Noise Abatement: The circuit patterns are drawn to avoid noise sensitive areas (avoid overflying Stubbington and Hill Head (which are inside the circuit) and Fareham South-West (on the NW corner outside the circuit)).

When departing Runway 23, track the extended centre-line to avoid overflying housing near the threshold of Runway 05.

Arrivals from the north are to route through the Titchfield Gyration and on to base leg avoiding all housing for Runway 23 or downwind for Runway 05.

Circuit Height Standard at 1000ft AAL, Warbird at 1200ft AAL.

Circuit directions: Standard circuit Rwy 23 R/H, Rwy 05 L/H.

Warbird circuit Rwy 23 L/H, Rwy 05 R/H.

All aircraft operating within the circuit are required to select transponder conspicuity code 4306.

Standard join from the north:

- Remain west and outside Fleetlands ATZ;
- Downwind for Rwy 05 or right base for Rwy 23;
- Straight in approach or overhead joins for Rwy 23 are subject to circuit traffic and AFISO workload.

Standard join from the south, west and east. Aircraft are suggested to join via Spinnaker VRP, Calshot VRP or Cowes VRP. Be aware that Calshot VRP is located underneath Solent CTA 2 which extends 2000ft - 5500ft amsl and is to the south of the Southampton Airport CTR.

- Left base for Rwy 05 or downwind for Rwy 23.
- Straight in approaches and overhead joins are subject to circuit traffic and AFISO workload. Standard joins are preferable.

Helicopter Operations

SAR rotary operations take priority. All non-SAR rotary operations may use the same arrival, departure, circuit and ground procedures. Rotary traffic is permitted to land or depart from 'The Triangle'.

Warnings:

SAR and rotary daily H24 operations.

Model Aircraft Flying operates in the south-east of the aerodrome.

Fleetlands Heliport is located 1.9 nm to the north-east of Lee-on-Solent and has an active ATZ.

Possible Compass Error when using Runway 05 Bravo 2 Hold. Some aircraft may experience magnetic disturbances, affecting the Heading Reference System. Pilots should ensure that, pre-flight checks are conducted within the white box or at the hold point. When positioned for take-off from Runway 05 the aircraft heading reference is checked against the runway alignment. Aircrew noticing a compass anomaly should notify ATC as soon as possible.

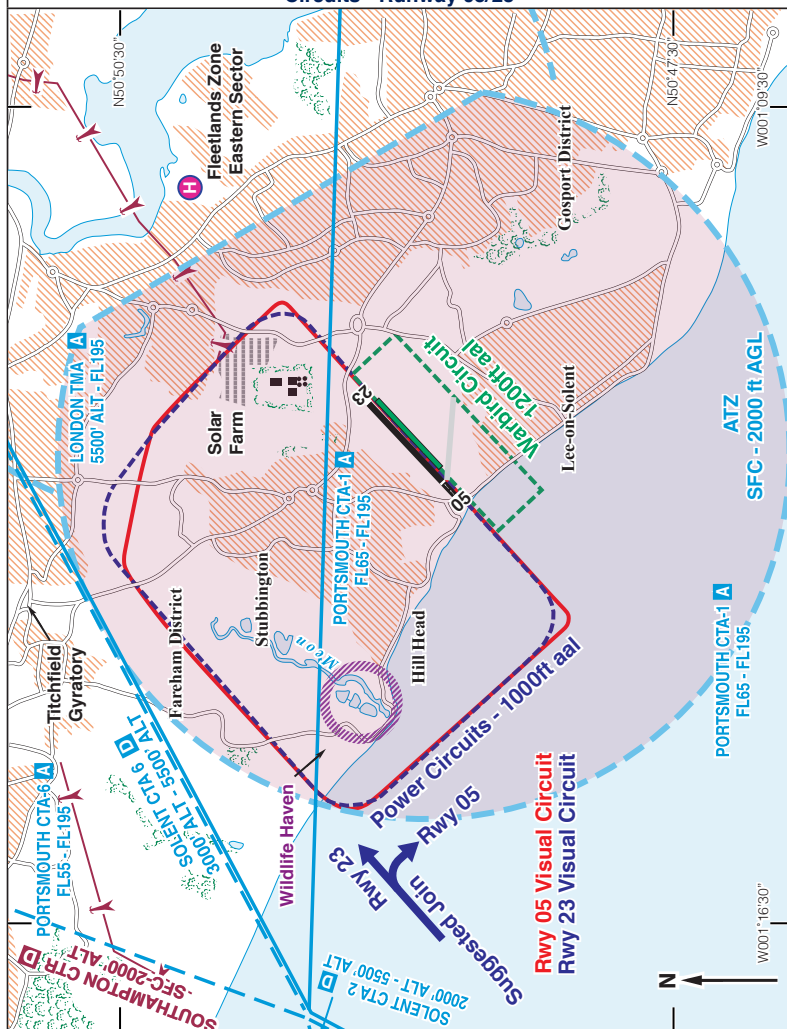
Restaurant: Cafe in the reception/Terminal area with accessible toilets.

Fuel: 100LL, Jet A-1.
See website for details.

Tel: 01329 824748 Ops
Email: ops@solentairport.co.uk
Website: www.solentairport.co.uk



Circuits - Runway 05/23



Circuits - Acft arriving from the North are suggested to join via Wickham VRP, for a downwind or via the Titchfield Gyratory for right base for Rwy 23 remaining west and outside Fleetlands ATZ. Straight-in-Approach Rwy 23 - call Fleetlands Information 135-700 for ATZ transit prior to Wickham VRP. Standard overhead joins are available on request with Lee Information and are dependent on the activity of the Warbird circuit. Circuits at 1000ft AAL - LH on 05 and RH on 23. Warbird circuit at 1200ft AAL - RH on 05 and LH on 23.