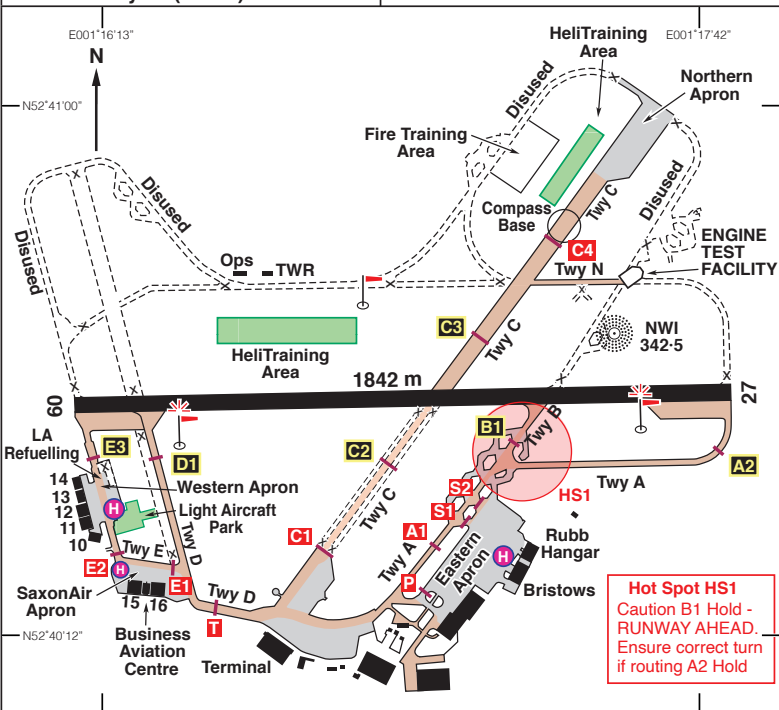


EGSH (NWI)

N52 40.55 E001 16.97		NORWICH		117ft AMSL	
2.8 nm N of Norwich City.				CLN 114.55 008 49.9	
c/s Norwich	APP 119.355	TWR 124.255	RAD 119.355 (LARS)		
DIRECTOR 128.330 (when instructed by ATC)			ATIS 128.630		
NDB 'NWI' 342.5 (on A/D)					
ILS/DME Rwy 27 (268°M) 'I-NH' 110.90					



Rwy	Dim(m)	Surface	TORA(m)	LDA(m)	Lighting
09/27	1842x45	Asphalt/ Concrete	09-1842† 27-1842†	09-1842 27-1842	Ap Thr Rwy RCL PAPI Ap Thr Rwy RCL PAPI
† Take-off: Rwy 09 from intersection with Twy D - TORA 1656 m. Take-off: Rwy 09 from intersection with Twy C - TORA 850 m. Take-off: Rwy 09 from intersection with Twy B - TORA 535 m. Take-off: Rwy 27 from intersection with Twy B - TORA 1326 m. Take-off: Rwy 27 from intersection with Twy C - TORA 1014 m. Take-off: Rwy 27 from intersection with Twy D - TORA 205 m.					
Op hrs: Strictly PPR. 0600-2130. (31st October 2022 - 26th March 2023, 0600-2000). Landing Fee: MTOW - Per tonne £19.60. Customs: Nil. Hangarage/Maintenance: Limited available on request through Handling agents.					

N52 40.55 E001 16.97

NORWICH

117ft AMSL

Remarks: Operated by Norwich Airport Ltd., Norwich NR6 6JA.

Flights within Norwich CTR/CTA are subject to the regulations applicable to Class 'D' Airspace.

Pilots operating in the vicinity of, but intending to remain outside Norwich CAS and maintaining a listening watch only on Norwich Radar freq 119.355 are encouraged to select SSR Code 7350. Selection of the code does not imply the provision of any form of Air Traffic Service.

VFR Flights and VRPs - see overleaf. CTR/CTA and VRPs Chart is at page 541.

PPR to all visiting aircraft. PPR from Saxonair, Tel: 01603 510110 or ATC, Tel: 01603 420641.

The preferred Handling agent at the airport for GA and Business Aviation is SaxonAir, Tel: 01603 510110, Fax: 01603 488879, Email: handling@saxonair.com, Website: www.saxonair.com.

All aircraft operating for hire or reward will be handled by Norwich Airport Ltd.

All aircraft must contact APP at least 10 minutes before ETA.

Aircraft must carry Third Party Insurance cover of not less than one million pounds.

High visibility jackets required when on the manoeuvring and apron areas.

Variable circuits. Joining circuit overhead not normally available.

Aircraft should not vacate the runway until instructed due to various holding points being used simultaneously.

Due proximity of helicopter operations, Twy E from abeam Hangar 12 to Hold E2 and vice versa, is not normally available to fixed wing aircraft.

Booking out details to be passed by telephone. Calls on RTF may result in delays.

Noise Abatement Procedures: On departures from any runway, all aircraft are to climb straight ahead to 1000ft aal before turning, unless instructed otherwise by ATC. A/c less than 5700 kg AUW may be permitted to make a turn to the north at 500ft aal.

Warnings: Light aircraft and microlights operate from Felthorpe aerodrome (3nm NW), occasionally throughout the year with increased activity during the summer months.

Special Procedures in force, telephone Norwich ATC for details.

Extensive helicopter training takes place to the north of Rwy 09/27.

Intensive Bird activity especially at dawn and dusk.

Intensive Bird activity within 0.8 nm and 1.6 nm to NE, S and SW of AD up to 1500ft agl.

Windshear and turbulence can occur on final approach to Rwy 27 in strong southerly or south westerly winds.

Restaurant: Available in the Terminal.

Car Hire: Avis Tel: 01603 416710/416719. Eurocar Tel: 01603 400280. Hertz 01602 404010.

Fuel: 100LL, Jet A1.

All major Cards, Multi-Service.

Fuel Services Tel: 01603 402042,

Email: fuel@norwichairport.co.uk

or via Norwich Airport Ops.

Tel: 01603 411923 Admin

Tel: 01603 510110 SaxonAir

Tel: 01603 420641 ATC

Tel: 01603 420658 Ops

Tel: 01603 420640 ATIS

Fax: 01603 488879 SaxonAir

Fax: 01603 420667 ATC

Fax: 01603 414927 Ops

Email: ops@norwichairport.co.uk

Website: www.norwichairport.co.uk

NORWICH
VFR Flights and Visual Reference Points (VRPs)

VFR Flights

- a. VFR flights in the CTR/CTAs may be given routing instructions and/or altitude restrictions in order to integrate VFR flights with other traffic.
- b. Pilots should anticipate routing instructions in relation to the Visual Reference Points (VRPs).
- c. Pilots of VFR flights are reminded of the requirement to remain in VMC at all times and to advise ATC if at any time they are unable to comply with the clearances as issued.

Visual Reference Points

VRP	Co-ordinates
Attlebridge Disused AD	N52 41.60 E001 06.52
Aylsham A140 Roundabout	N52 47.07 E001 15.32
Brundall Marina	N52 37.07 E001 26.00
Coltishall Disused AD	N52 45.18 E001 21.32
Hethel Disused AD	N52 33.75 E001 10.50
Keswick Roundabout	N52 35.28 E001 16.50
Lenwade Lakes	N52 43.12 E001 06.15
Norfolk Showground	N52 39.02 E001 11.12
Stoke Holy Cross Masts	N52 34.50 E001 19.88
Thorpe Roundabout	N52 37.62 E001 22.70

See CTR/VRPs opposite.

NORWICH

CTR/CTA and VRPs

