

# EGHR

N50 51.57 W000 45.55

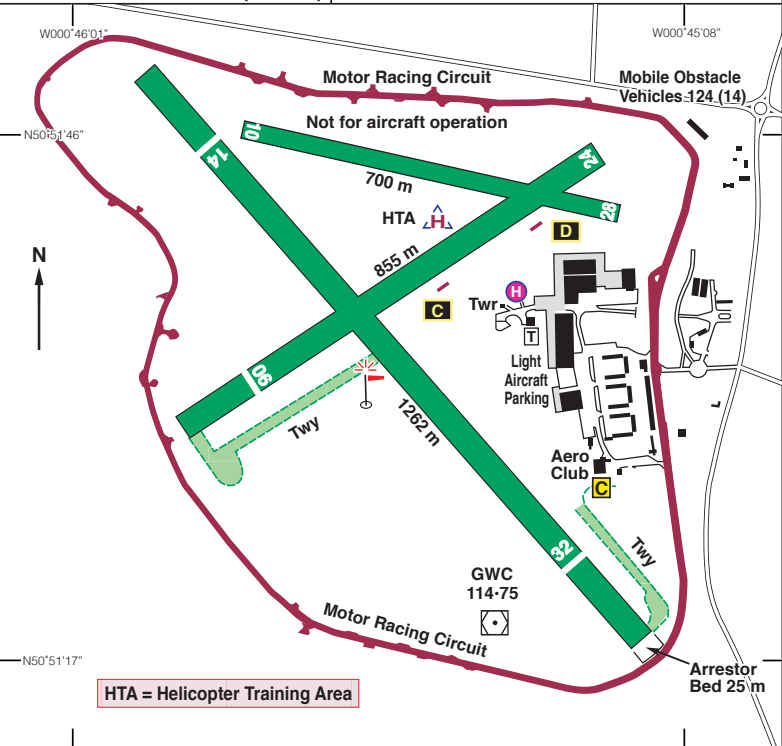
**CHICHESTER/Goodwood**

111ft AMSL

1.5 nm NNE of Chichester.

**c/s Goodwood Information 122.455 AFIS**

**VOR/DME 'GWC' 114.75 (On A/D)**



Rwy	Dim(m)	Surface	TORA(m)	LDA(m)	Lighting
14/32	1262x31	Grass	14-1120 32-1127	14-1111 32-1035	Thr Rwy APAPI 3° LH Thr Rwy APAPI 3° LH
06/24	855x30	Grass	06-799 24-799	06-715 24-799	Nil Nil
10/28	700x30	Grass	10-700 28-700	10-700 28-700	Nil Nil ABn Wh

*continued*

# EGHR

N50 51.57 W000 45.55		<b>CHICHESTER/Goodwood</b>	111ft AMSL
<b>Op hrs:</b> PPR. 0900-1700 (Summer 0900-1800) Dec - Jan 0900-1615. OT by arrangement.			
<b>Landing Fee:</b> Please see website.			
<b>Customs:</b> Non EU Deps; EU and non EU Arrs - 4 hrs PNR via ATS.			
<b>Hangarage:</b> Available.			
<b>Maintenance:</b> Available, Tel: 01243 755064. Fax: 01243 755063.			
<p><b>Remarks:</b> Operated by Goodwood Road Racing Co. Ltd., Goodwood, Chichester, West Sussex PO18 0PH.</p> <p>PPR by telephone is required. Use of the aerodrome outside of the published hours required in writing.</p> <p>All aircraft must have Third Party Insurance cover of not less than £1,000,000.</p> <p><b>Circuits:</b> As directed by ATS. No fixed-wing circuits after 1400 on Sundays.</p> <p>No helicopter circuits on Sundays.</p> <p>Noise Abatement procedures in operation – See next page and Charts at pages 194 and 195.</p> <p>Goodwood Events are strictly PPR for all visiting aircraft. Contact Admin for details.</p>			
<p><b>Warnings:</b> When Runways 06/24 and 10/28 are in use for fixed-wing circuits, opposite direction helicopter circuits will be flown from the threshold of Runway 32. The motor racing track on the airfield perimeter is in constant use during daylight hours. It is not to be used for the taxiing of aircraft at any time.</p> <p>An arrestor bed, consisting of 'washed shingle', is available at the end of Runway 14 LDA in the event of an overrun. The arrestor bed exceeds runway width by 16m and commences 40m from the end of the Runway 14 LDA.</p> <p>A runway starter extension is available on Runway 32 to correctly indicate the start of TORA/TODA/ASDA. Aircraft using the starter extension with a wingspan greater than 16m are to coordinate the departure with ATS.</p> <p>Pilots may experience windshear on Runways 06 &amp; 24 particularly in strong southwesterly wind conditions.</p> <p>Increased bird activity may be present on the AD outside of normal operating hours. Pilots operating with an authorised out of hours approval should exercise caution.</p>			
<p><b>Taxi:</b> Dunnaways, Tel: 01243 782403.</p> <p><b>Car Hire:</b> National, Tel: 01243 202426.</p> <p><b>Restaurant:</b> Cafe in the Flying Club: Bar, Food – 0930 until airfield closing. Tel: 01243 774577.</p>			
<p><b>Fuel:</b> 100LL, Jet A1*. Mastercard &amp; Visa. Jey A1 Bowser service only.</p>		<p><b>Tel:</b> 01243 755061 ATS 01243 755087 Admin/Event PPR 01243 755159 Goodwood Aero Club 01243 755066 Goodwood Flying School</p> <p><b>Fax:</b> 01243 755062 ATS 01243 755085 Goodwood Flying School</p> <p><b>Email:</b> control.tower@goodwood.com</p> <p><b>Website:</b> www.goodwood.com/estate/aerodrome/</p>	

## CHICHESTER/Goodwood Noise Abatement Procedures

### **Fixed Wing:**

Standard join is overhead at 2000ft. 'Straight-in' and 'base' joins are strongly discouraged when circuit is active. Outside ATS hours and after sunset, overhead join is mandatory.

**Circuit height:** 1200ft QFE. No fixed-wing circuits after 1400 on Sundays.

**Circuit directions:** Rwys 06,10 and 14 – Left Hand.  
Rwys 24, 28 and 32 – Right Hand.

### **Runway 06**

**Take-off:** No restrictions.

**Landing:** No low approaches over the built up-areas in the undershoot.

### **Runway 24**

**Take-off:** Turn right as soon as practicable to do so and establish a Westerly track. Maintain track until West of built up areas. If remaining in the circuit, ensure that crosswind and downwind track is West/North West of Lavant village. No practice engine failures or low level circuits are permitted on runway 24. Avoid overflight of Lavant village.

**Landing:** No restrictions.

### **Runway 14**

**Take-off:** Turn left 10° at the upwind end of Runway 14 to avoid overflying the school and houses under the climb out path. No practice engine failures after take-off until well clear of the school and houses.

**Landing:** No low approaches over East Lavant village.

### **Runway 32**

**Take-off:** Turn right 10° at the upwind end of Runway 32 to avoid East Lavant village. Maintain that heading until well beyond the village. No practice engine failures after take-off until well beyond East Lavant village.

Do not exceed the 10° right turn to avoid conflicting with the helicopter circuit.

**Landing:** No restrictions.

### **Runway 10**

**Take-off:** Turn left 10° at the upwind end of the runway to avoid overflying Westerton village.

**Landing:** No restrictions.

### **Runway 28**

**Take-off:** Turn left 10° at the upwind end of the runway to avoid overflying Lavant village.

**Landing:** No restrictions.

### **Helicopters:**

**Circuit height:** 800ft QFE or as directed by ATS. No helicopter circuits on Sun.

**Circuit directions:** When Rwys 14 or 32 are in use, circuits are flown from the 'triangle' east of the intersection and are flown inside and below the fixed wing circuit.

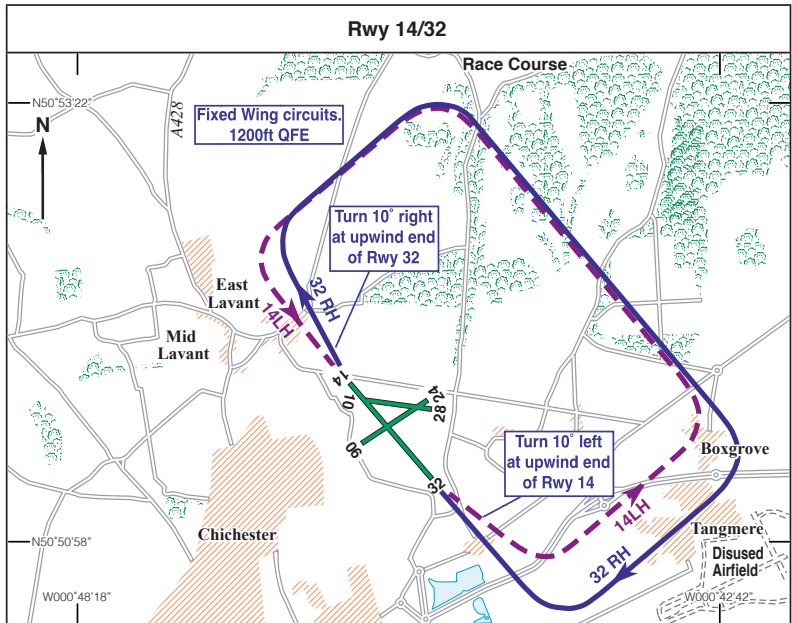
When Rwys 06,10, 24 or 28 are in use, circuits are flown from Rwy 32 threshold parallel to, but in opposite direction to the fixed wing circuit, i.e. to the south of AD.

Helicopters are to avoid routing over Chichester, Westerton and Summersdale. Helicopters are not permitted to join the circuit below 700ft QFE unless weather dictates a lower height.

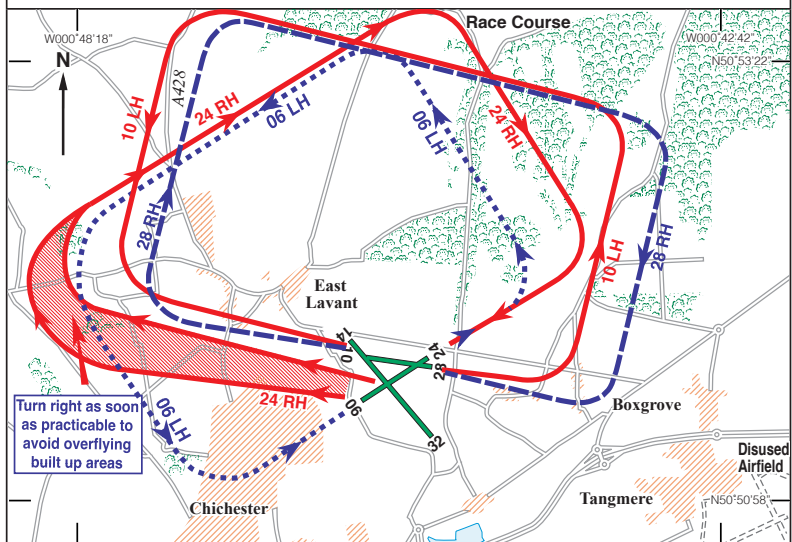
**Noise Abatement and Circuits – see pages 194 & 195.**

# CHICHESTER/Goodwood Noise Abatement and Circuits - Fixed Wing

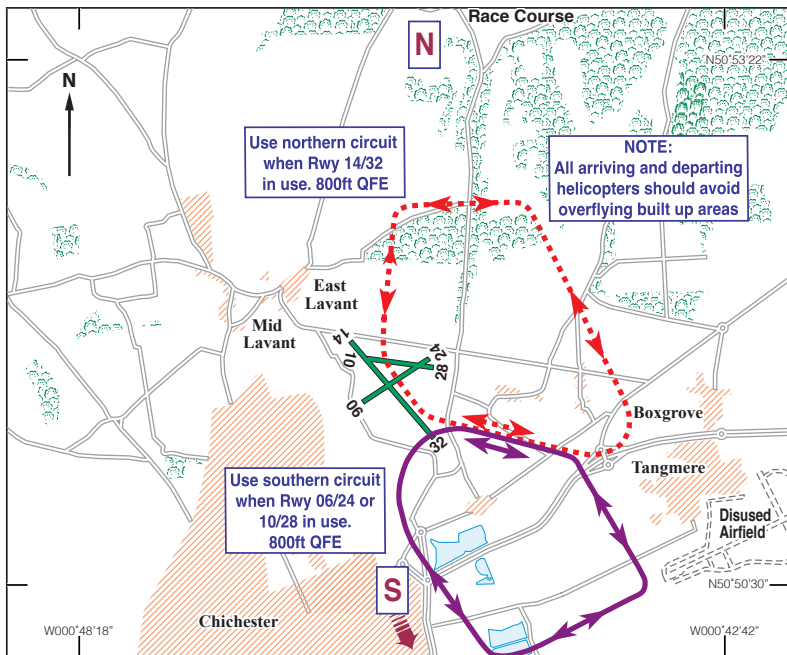
## Rwy 14/32



## Rwy 06/24 and Rwy 10/28



# CHICHESTER/Goodwood Noise Abatement and Circuits - Helicopters



## Helicopter Reporting Points

**N** - The Trundle, Goodwood.

**S** - Leisure Centre Lakes, Chichester.