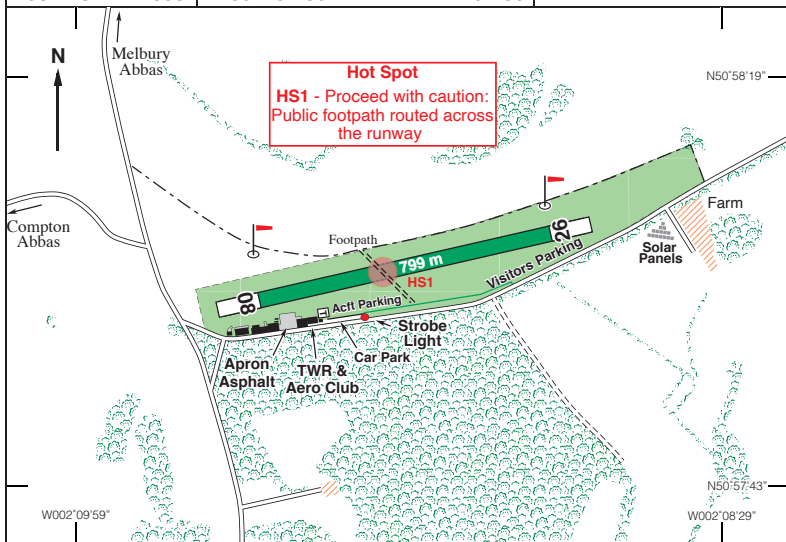


# EGHA

N50 58.03 W002 09.22	<b>COMPTON ABBAS</b>	811ft AMSL
3 nm S of Shaftesbury.		
<b>c/s Compton Radio</b>	<b>122-710 A/G</b>	
<b>Radar Service available Mon-Fri from Boscombe Down 126-700, or</b>		
<b>Yeovilton 127-350</b>	<b>Bournemouth APP/RAD 119-480</b>	



Rwy	Dim(m)	Surface	TORA(m)	LDA(m)	Lighting
08/26	799x30	Grass	08-799 26-799	08-799 26-799	Nil Nil

**Op hrs:** PPR. By telephone - See Website for Op Hrs.

**Landing Fee:** See website [www.comptonairfield.com](http://www.comptonairfield.com).

**Hangarage:** Restricted. **Maintenance:** Available. **Customs:** 24hrs PNR.

**Remarks:** Compton Abbas Airfield, Ashmore, Nr. Salisbury, SP5 5AP.  
Airfield owned and operated by Ashcombe Estates LLP. To PPR call 01747 811767.  
Due to the visual screening effect of tall trees to the south of the airfield, it is recommended that first time visitors approach from a northerly direction, i.e Shaftesbury – Compton Abbas is 150°M/ 3 nm.

**Note:** Unable to accept non radio aircraft.

**Noise Abatement and Circuits - See page 208.**

**Circuits:** LH on Rwy 08, RH on Rwy 26.

Traffic to join overhead or dead-side descending to 1800ft QNH to cross the upwind runway numbers.

For airfield weather and live webcams, see [www.comptonairfield.com](http://www.comptonairfield.com).

*continued*

Remarks (continued):

Aircraft to clear right after landing on Rwy 08, and left after landing on Rwy 26.  
Due to prop-wash, do not park aircraft in front of buildings.  
24/7 Management and CCTV coverage in operation.  
Distance to Run runway markers are installed every 200 metres. When advised of soft runway conditions and if not landed before the 600 metre marker then please make another approach.  
100m unlicensed extension at each end of the runway.

Helicopter Operations

Join long final (5 miles) for designated runway, giving way to any established circuit traffic. Parking area to the south east of the airfield.

Warnings:

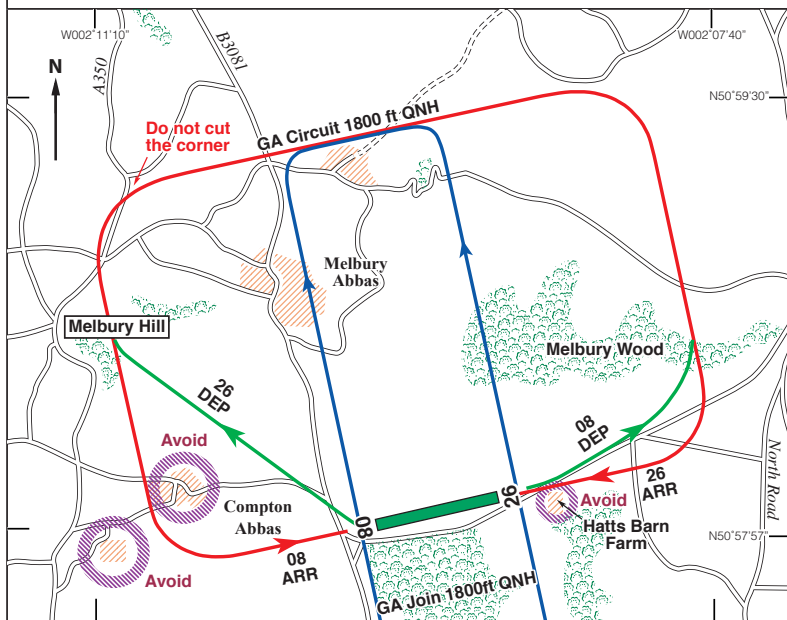
The ground to the north of the runway has a steep down slope gradient.  
Due to trees on the southern boundary, expect turbulence on approaches to Rwy 08 and Rwy 26 when the wind has a southerly component.  
Trees penetrate the approach and take-off surfaces by as much as 23ft.  
Multiple trees penetrate the transitional surface to the south west of the runway by as much as 31ft.  
Beacon with strobe in Southern Transition surface penetrates by 9ft.  
Public footpath crosses the runway at the mid point in a NW/SE direction.

**Cafe & Bar:** Highly acclaimed cafe and bar open all year.  
For opening times, See Website.  
  
Well behaved dogs welcome.

<b>Fuel:</b> 100LL, UL91. Most cards accepted. (No cash)	<b>Tel:</b> 01747 811767 (PPR) <b>Email:</b> info@comptonairfield.com <b>Website:</b> www.comptonairfield.com
---	---



# COMPTON ABBAS Noise Abatement and Circuits



The airfield operates in an area of outstanding natural beauty, and to maintain the existing amicable relationship with the community, please observe good airmanship at all times.

## Arrivals:

Rwy 08 - A normal approach, but please avoid getting low on final approach.  
Rwy 26 - A normal approach.

## Departures:

Rwy 08 - As soon as practicable after passing 200ft AAL turn left in order to avoid overflying Hatts Barn Farm.  
Rwy 26 - Right turn as soon as practicable after passing 200ft AAL in order to avoid Compton village, tracking over the crest of Melbury hill.