

# EGTB (HYC)

N51 36.70 W000 48.50

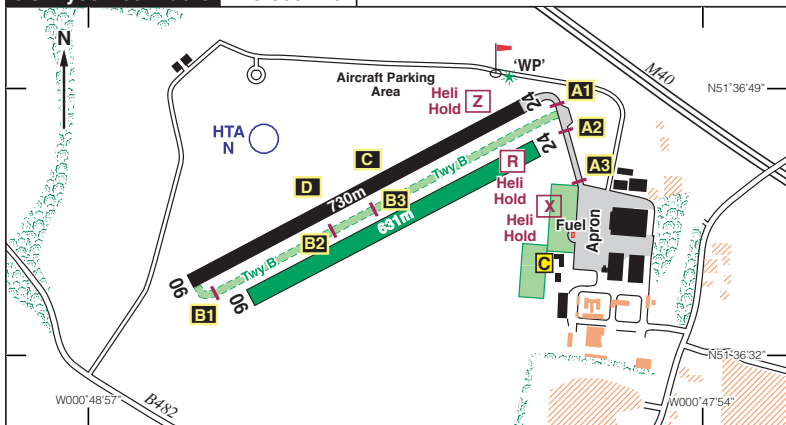
WYCOMBE AIR PARK/Booker

513ft AMSL

2.5 nm SW of High Wycombe.

CPT 114-35 065 17

c/s Wycombe Radio 126-555 A/G



Rwy	Dim(m)	Surface	TORA(m)	LDA(m)	Lighting
06/24	730x23	Asphalt	06-730 24-730	06-730 24-730	Thr Rwy APAPI 4° Thr Rwy APAPI 4°
06/24	631x23	Grass	06-631 24-631	06-631 24-631	Nil Nil IBn 'WP' Gn

**Op hrs:** PPR mandatory. 0900L-1730L.

**Landing Fee:** Minimum charge £11 inc VAT

**Customs:** PNR.

**Hangarage:** Limited.

**Maintenance:** Fixed wing & Helicopter available.

**Remarks:** Operated by Airways Aero Associations Ltd. PPR mandatory. Noise Abatement Procedures in Force - pilots must obtain briefing pack before departure or arrival. No ATC, pilots are responsible at all times for lookout and traffic separation. Joining aeroplanes are to position to overfly the runway in use at 1200ft QFE, on the runway QDM. When overhead the midpoint of the runway, turn left or right (depending on the circuit direction) to level at circuit height 1000ft QFE on the crosswind leg prior to turning downwind.

**Variable Circuits:** - see overleaf. Request a briefing pack when making a PPR. Helicopter circuit 750ft QFE.

**Caution:** Intensive tug glider launching. There is no dead side at any time. When powered fixed wing are operating left hand circuits, gliders will operate right hand. When powered fixed wing are operating right hand circuits, gliders will operate left hand circuits. Grass areas liable to waterlogging. Helis to remain well clear of houses to the east.

**Warnings:** High ground rising to 442ft amsl 2.5 nm to the SW with radio mast (Lgtd) 528ft amsl. Non standard markings on main apron do not guarantee wing-tip clearance, taxi with extreme caution. No overhead transits of aircraft due to gliding activity.

**Restaurant:** Licensed Restaurant (7 days a week), Tel: 01494 556923.

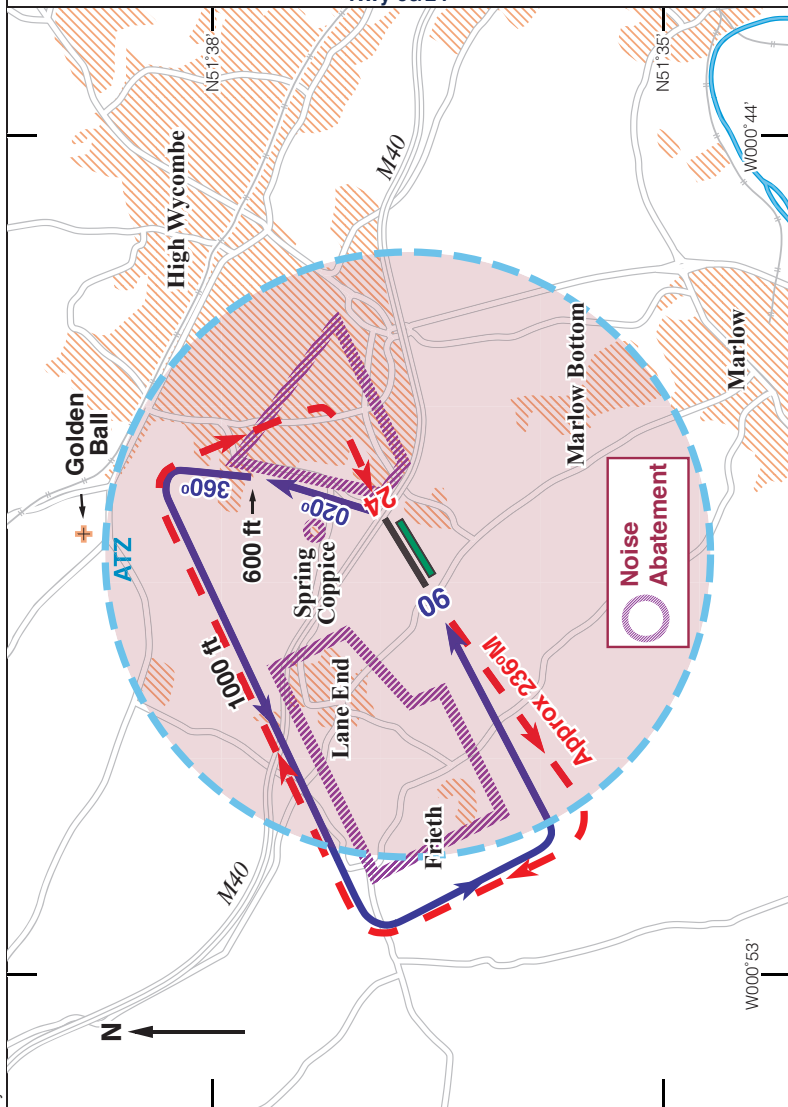
**Fuel:** 100LL, Jet A1 & UL91.

**Tel:** 01494 443737 (Ops/PPR)

**Website** <https://egtb.redatlas.co.uk/public/ppr>

### WYCOMBE AIR PARK/Booker – Fixed Wing Circuits:

Rwy 06/24



Pilots **must** obtain briefing on Noise Abatement Procedures before departure. Helicopters should join from the north at the 'Golden Ball' at 750ft QFE.

# WYCOMBE AIR PARK/Booker – Helicopter Circuits:

