

PRESTWICK

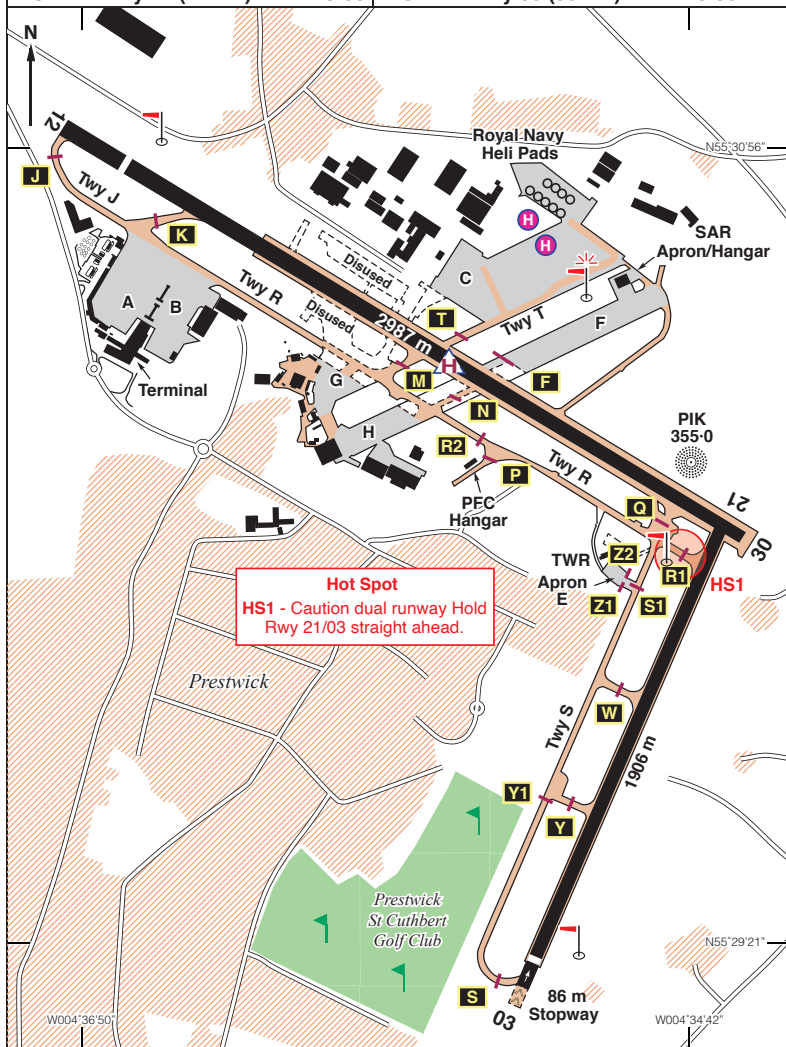
65ft AMSL

c/s Prestwick	APP 129.450	TWR 118.150, 127.155 (as directed)
----------------------	--------------------	---

RAD 129.450, 124.630 (as directed)	ATIS Information 121.130
------------------------------------	--------------------------

NDB 'PIK' 355.0 (On A/D)	VOR/DME 'TRN' 117.500
--------------------------	-----------------------

ILS/DME Rwy 12 (124°M) I-PP 110·30	ILS/DME Rwy 30 (304°M) I-KK 110·30
------------------------------------	------------------------------------



EGPK

N55 30.57 W004 35.67		PRESTWICK				65ft AMSL
Rwy	Dim(m)	Surface	TORA(m)	LDA(m)	Lighting	
12/30	2987x46	Concrete/	12-2986	12-2742	Ap Thr Rwy RCL PAPI 3°	
		Asphalt	30-2987	30-2987	Ap Thr Rwy RCL PAPI 3.5°	
03/21	1906x45	Asphalt	03-1906	03-1825	Thr Rwy PAPI 3°	
			21-1906	21-1906	Ap Thr Rwy PAPI 3.5°	

Op hrs: H24. PPR is mandatory 72 hours in advance.

Landing Fee: £7.70 per tonne + VAT. Minimum £40.00 +VAT. *Concessionary landing fee for private light aircraft only: Under 2 tonnes - Single £18.53, Twin £36.94 incl VAT, Contact Prestwick Flight Centre Tel: 01292 476523.

*Note: Concessionary fees only available at Prestwick Flight Centre.

Hangarage: Limited.

Customs: Available

Maintenance: Prestwick Flight Centre Tel: 01292 476523 (Light Acft only).

Remarks: Operated by Glasgow Prestwick Airport Ltd, Aviation House, Prestwick, Scotland KA9 2PL.

Flights within Prestwick CTR/CTA are governed by the regulations applicable to Class 'D' Controlled Airspace.

CTR/CTA, Entry/Exit Lanes and VRPs - see pages 594 and 595.

Microlights not accepted.

PPR all training aircraft. Pilots are to Flight Plan by telephoning ATC Ops.

Handling mandatory for all aircraft. Handling Agent/Fixed Base Operator is:

Prestwick Aviation Services,

Tel: 01292 511333, Freq: 129.700.

Email: pikops@glasgowprestwick.com

Noise Preferential Procedures in force.

Twy links N, Q and M are not to be used at night or in low visibility.

Only marked taxiways are to be used.

Taxiway route to/from Spirit Aerosystems and HMS Gannet is via Link Tango (T).

Aircraft using Apron E should enter via Z2 and call for taxi clearance from Z1.

Helicopter Operations: Helicopter Operations revised to: Helicopters are normally allocated to Apron G or H.

Such helicopters are to operate to/from the Apron G and H by approaching to/from the aiming point marked on Rwy 12/30 between Links M and N.

Helicopters may 'air' or 'ground' taxi between the aiming point and the designated parking area including the military parking circles.

Due to the surface condition of Apron C, only marked designated taxiway routes should be used.

At ATC discretion, the thlds of Rwys 12/30 and 03/21 may also be used as aiming points.

Warnings: Aircraft carrying out circuits on Runway 03/21 are warned of rising ground to the North East.

Model acft activity within the CTR at Auchens and Tarbolton up to 400ft daylight hrs.

Bird Hazard assessed as severe during migratory periods. (Oct/Nov and Mar/Apr).

Mast 606ft aal, 3.2 nm N of ARP.

Low level mechanical turbulence due to terrain and the presence of buildings on short final for all runways can affect the wind resulting in the reported wind speed sometimes being lower than expected by pilots.

continued

Remarks (continued):**Omni Directional Departures**

Rwy	Description	Restrictions
12	Climb straight ahead 124°M to 740ft then turn on track climbing to enroute safety altitude/MSA. PDG 3.8% to 740ft then 3.3% after turn.	Close-in obstacles exist. See UK AIP EGPK AD 2.10. This procedure does not take account of noise abatement procedures which may require additional manoeuvres once above the initial altitude and climbing. See UK AIP EGPK AD 2.21 for Noise abatement procedures.
21	Climb straight ahead 206°M to 1350 ft then turn on track climbing to enroute safety altitude/MSA. PDG 3.7% to 1350ft then 3.3% after turn.	Close-in obstacles exist. See UK AIP EGPK AD 2.10.
30	Climb straight ahead 304°M to 570ft then turn on track climbing to enroute safety altitude/MSA. PDG 3.3%.	Close-in obstacles exist. See UK AIP EGPK AD 2.10. This procedure does not take account of noise abatement procedures which may require additional manoeuvres once above the initial altitude and climbing. See UK AIP EGPK AD 2.21 for Noise abatement procedures.

Restaurant: Available in the Terminal Building.

Car Hire: Avis, 01292 477218. Europcar, 01292 671222.

National, 01292 671222.

Fuel: 100LL- from Prestwick Aviation Services.
All credit cards accepted.
Fuel - BP Sterling, Multiservice.

Tel: 01292 511107 ATC Ops
0871 2230700 Switchboard
01292 511190 A/D Ops
Fax: 01292 511010 Admin
Website: www.glasgowprestwick.com

PRESTWICK

Special VFR and VFR Flights

Clearance for Special VFR and VFR flights may be requested and will be given whenever the traffic situation permits.

Entry/Exit Lanes

Entry/Exit Lanes, 3 nm wide, are established to permit aircraft to operate to and from Prestwick Airport in IMC but not under IFR, subject to the following conditions:

- a. Use of the lanes is subject to clearance being obtained from Prestwick ATC.
- b. Aircraft using the lanes must remain clear of cloud and in sight of the surface, not above 3000ft (Prestwick QNH) and in a flight visibility of not less than 3km.
- c. All aircraft using a lane shall keep the centreline on its left, unless otherwise instructed.
- d. Pilots of aircraft are responsible for maintaining adequate clearance from the ground or other obstacles.

Additionally, flights operating under VFR may be required to route via the Entry/Exit Lanes.

VRPs

Co-ordinates

Culzean Bay/Castle	N55 22.17 W004 46.08
A70 Cumnock Roundabout	N55 27.33 W004 15.45
B741 Dalmellington Roundabout....	N55 19.40 W004 23.83
B742 Junction Dalrymple	N55 23.83 W004 35.55
Millenium Footbridge	N55 26.42 W004 39.05
Heads of Ayr	N55 25.97 W004 42.78
Irvine Harbour	N55 36.65 W004 41.92
Kilmarnock Railway Station	N55 36.75 W004 29.90
A76 Junction Mauchline	N55 30.95 W004 22.75
Pladda.....	N55 25.58 W005 07.07
West Kilbride Beach.....	N55 41.13 W004 52.08

PRESTWICK CTR/CTA and VRPs

