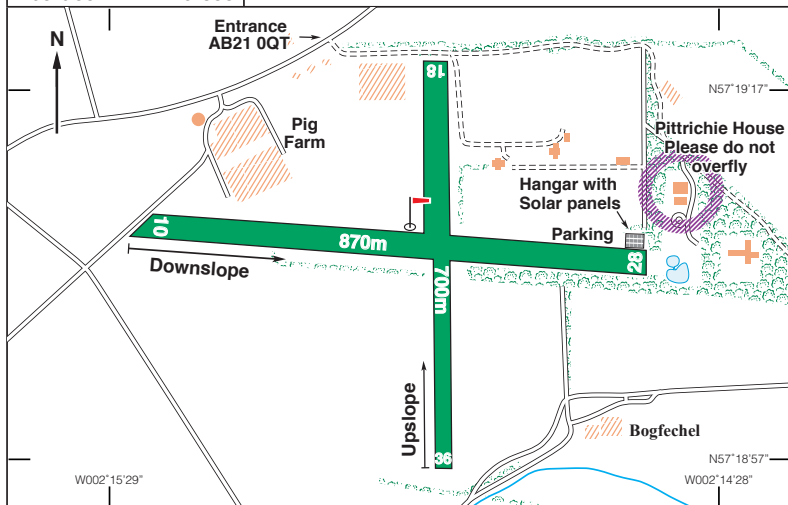


N57 19.15 W002 14.93

WHITERASHES

360ft AMSL

7 nm N of Aberdeen Airport.

ADN 114-30 053 0-79**Aberdeen APP 119-055**

Rwy	Dim(m)	Surface	TORA(m)	LDA(m)	Lighting
10/28	870x46	Grass	Unlicensed		Nil
18/36	700x18	Grass	Unlicensed		Nil

10/28 870x46

Grass

Unlicensed

Nil

18/36 700x18

Grass

Unlicensed

Nil

Rwy 10 first 275 m Downslope. Rwy 36 first 200 m Upslope.

Op hrs: 24 hrs PPR by email essential. Mon-Fri 0630-SS, Sat & Sun 0730-SS.**Landing Fee:** £10.00 plus £10.00 per night stay.**Customs:** Nil.**Hangarage:** Nil.**Maintenance:** Nil.**Remarks:** Unlicensed airfield situated within Aberdeen CTR, Class 'D' Airspace.PPR essential from John Thorogood. **Note: PPR will not be granted unless serviceable mode C transponder equipped.**

Compliance with arrival and departure procedures mandatory. See overleaf.

Circuits to north, remain below 1200ft QNH and within 1 nm of strip.**Note:** Overflight of hangar area is essential to check for acct ground movements/potential cross-runway conflicts in conditions of light winds prior to positioning for finals.**Warnings:** Pilots to look out for dog walkers which frequently use the strip.

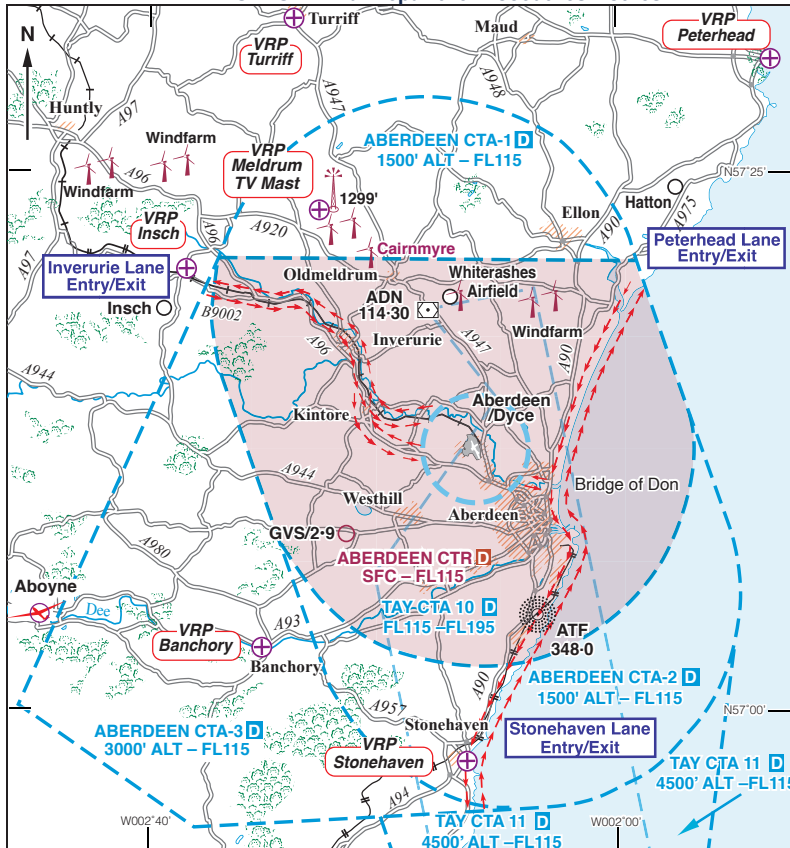
Limited availability to visitors Oct-Apr due water logging. Rwy 18/36 and 10/28 west of intersection generally unusable during this period.

Caution: 30ft trees Rwy 28 threshold. Expect wind shear on short final Rwy 28 in moderate NW wind. Wind Turbine 285ft aal, 0.6 nm SSE of strip.

TV Mast (Meldrum TV Mast VRP) 1299ft amsl, 5.5 nm WNW.

Taxi: L & B Taxis, Tel: 0800 1182077.**Fuel:** Nil.**Mob:** 07831 203708**Email:** jlt-avn@DrillingGC.com PPR

WHITERASHES Arrival/Departure Procedures/Routes



Standard Approach and Departure Routes:

Arrivals: From Meldrum TV Mast VRP route 130°M to zone entry point at Cairnmyre Wind Turbine NW 1 nm of Oldmeldrum. Clearance in zone is not above 1200ft QNH. Strip is 3.6 nm 128°M from Cairnmyre Wind Turbine with another prominent wind turbine 285 ft aal, 0.6 nm SSE of field. After landing, advise Aberdeen APP of the same. If no two-way radio contact on ground, call Aberdeen Flight Clearance 01224 727165.

Departures: If no contact with Aberdeen APP on 119-055 on ground, remain below 1200ft QNH within airfield circuit until two-way established with Aberdeen APP. If unable to achieve two-way communication, return to Whiterashes and telephone ATC to advise this. Remain below 1200ft QNH, or other altitude as cleared by ATC, to Track 308° M to Cairnmyre Wind Turbine then 310° M to Meldrum TV Mast VRP.