

EGLM

WHITE WALTHAM

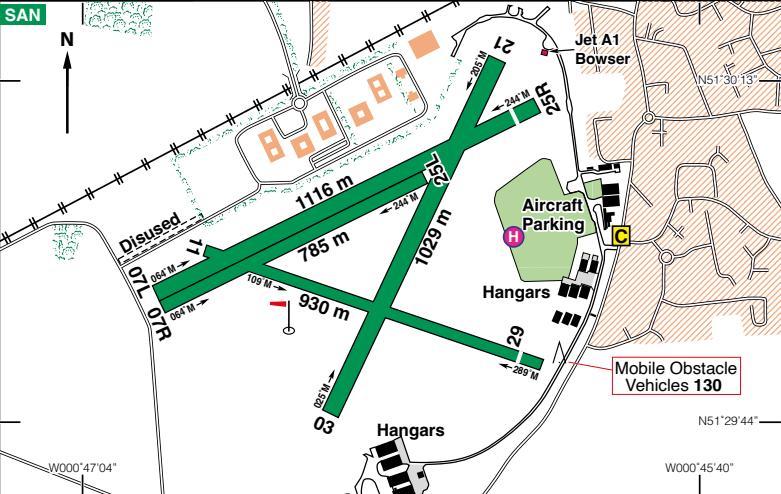
127ft AMSL

N51 30.04 W000 46.49

2 nm SW of Maidenhead. //pricing.inclines.timing

CPT 114-35 088 16-7

c/s Waltham Radio 122.605 A/G



Rwy	Dim(m)	Surface	TORA(m)	LDA(m)	Lighting
03/21	1029x45	Grass	03-1029	03-1029	Nil
			21-1029	21-1029	Nil
07L/25R	1116x45	Grass	07-1116	07-1116	Nil
			25-1116	25-1049	Nil
07R/25L	785x25	Grass	07-785	07-785	Nil
			25-785	25-785	Nil
11/29	930x30	Grass	11-930	11-930	Nil
			29-930	29-867	Nil

Op hrs: All acft are required to PPR. AD is open from 0800-1630 (0800-1930) or SS +30mins. Closing time maybe earlier if weather is unsuitable for flying.

Landing Fee: Single - £15, Twin - £30. Aircraft over 2000kgs £50. Please see website, www.wlac.co.uk for fees for helicopters and overnight parking.

Maintenance: Available. **Hangarage:** Limited. **Customs:** 4 hrs PNR.

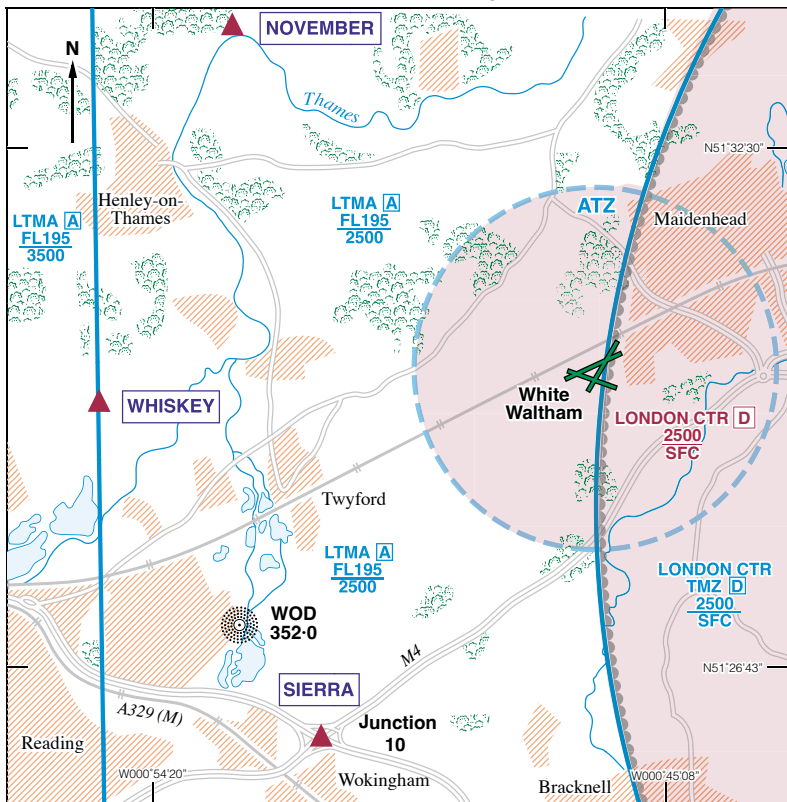
Remarks: Operated by White Waltham Airfield Ltd. Non-radio aircraft only permitted by prior arrangement. PPR via telephone or www.wlac.co.uk/ppr-request/. Grass rwys, may be rough/undulating, are marked with chalk centre lines and rwy designators. Join overhead at 1200ft QFE. Circuits at 800ft QFE, variable direction. No overhead departures. Use of transponders is mandatory for suitably equipped acft. No taxiways, vacate runway when able. Visitors parking in front of the club house. **Helicopters** - new recommended routes are in place, please visit pilot information on www.wlac.co.uk to view them.

Parking is to the West of the fixed wing parking area, unless by prior arrangement.

Caution: Vehicles use the perimeter track which bounds manoeuvring area to the North and East of the AD. Public road runs NE/SW 140m from Thld Rwy 29. Drone testing takes place on the AD up to 400ft AGL.

Restaurants: Licensed restaurant and Club facilities available. Tel: 01628 823799.

WHITE WALTHAM AREA CHART



White Waltham Local Flying Area (LFA) is defined as that portion of the ATZ contained within the London CTR. VFR Flights within the LFA may take place without compliance with IFR requirements subject to the following conditions:

1. Aircraft to remain below cloud and in sight of the ground.
2. Maximum altitudes: 1500ft QNH, provided that aircraft can remain at least 500ft below cloud; otherwise 1000ft QNH.
3. Minimum flight visibility 3 km.

Note. Pilots of aircraft flying in the local flying area are responsible for providing their own separation from other traffic operating in the relevant airspace.

SVFR flights are required to be separated by Heathrow Radar.

Inbound aircraft are to report their position and altitude in relation to one of the following Reporting Points:

From North - **NOVEMBER** - bend in river north of Henley.

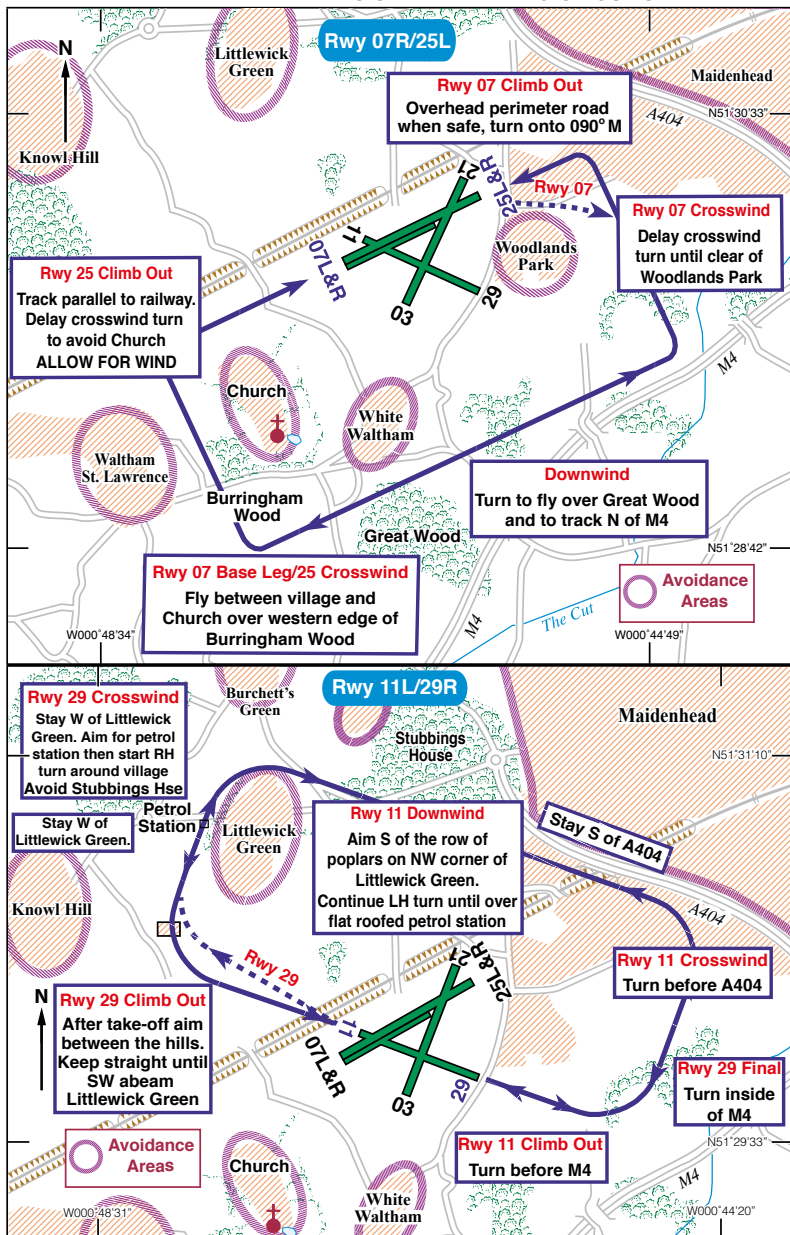
From West - **WHISKEY** - North of lakes East of Reading.

From South - **SIERRA** - Motorway junction north of Wokingham (Junction 10 M4).

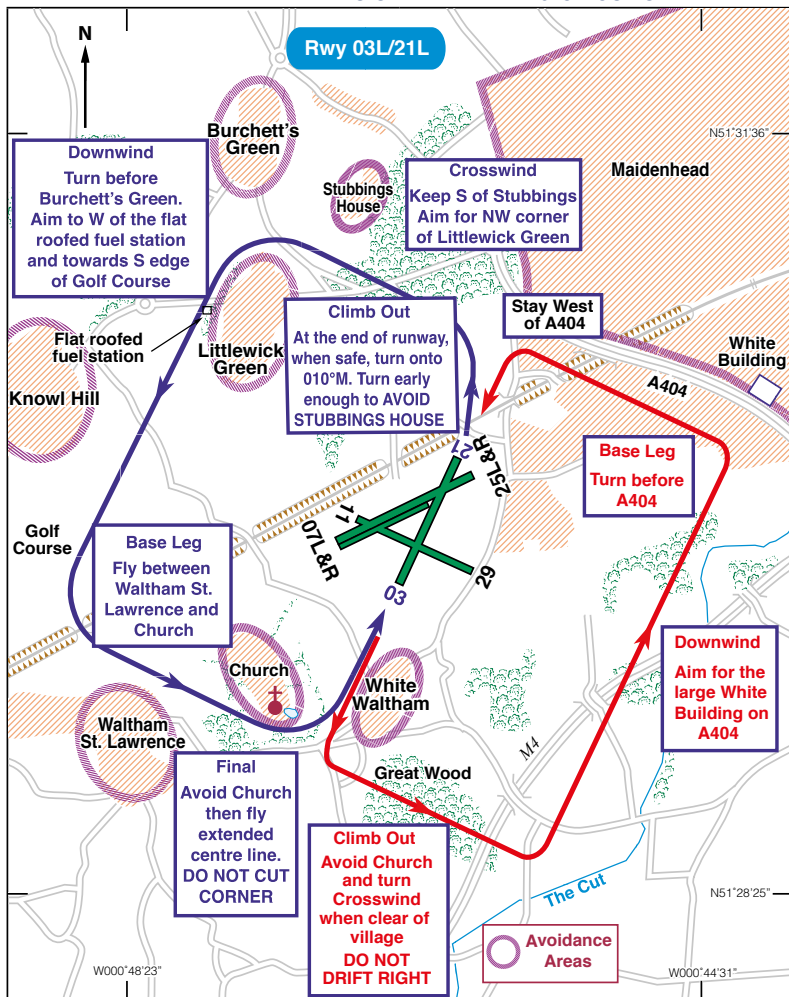
Regular users of the AD should be familiar with the joining procedures and circuits.

All information available on www.wlac.co.uk

WHITE WALTHAM - NOISE ABATEMENT & CIRCUITS



WHITE WALTHAM - NOISE ABATEMENT & CIRCUITS



Note: Pilots unsure of any of the circuit procedures should discuss them with an Instructor. Pilots of departing acft are requested to conform to local noise abatement procedures. Details are available in the briefing room, on the website and via a briefing from operations. Pilots should take care that operating noise is kept to a minimum. No flying over built up areas, avoid overflying local villages.

Pilots of suitably equipped acft are to use the transponder to its maximum serviceability with the altitude information selected.

Fuel: 100LL, UL91, Jet A1.

Tel: 01628 823272.

Website: www.wlac.co.uk