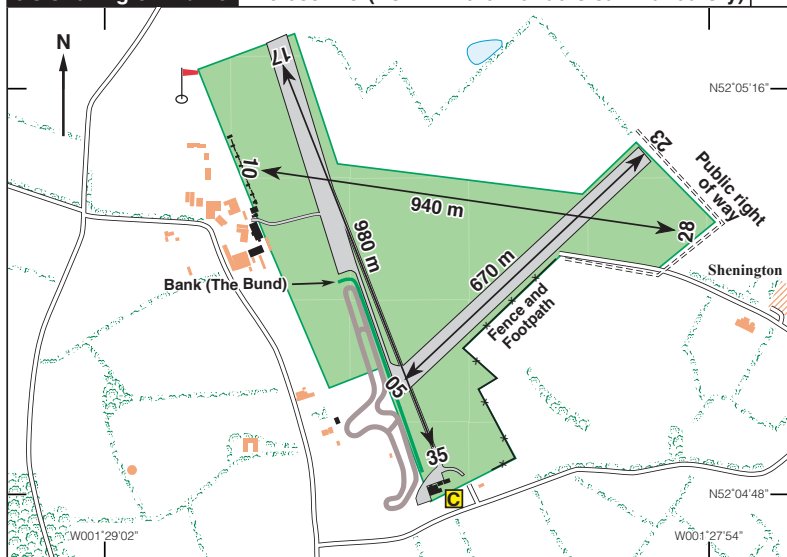


N52 05.10 W001 28.38 **SHENINGTON/Edgehill Gliding Centre** 642ft AMSL

5 nm NW of Banbury (Oxfordshire).

**c/s Shenington Traffic 129-980 A/G (Downwind blind radio call mandatory)**



Rwy	Dim(m)	Surface	TORA(m)	LDA(m)	Lighting
17/35	980x50	Grass	Unlicensed		Nil
05/23	670x40	Asphalt	Unlicensed		Nil
10/28	940x90	Grass	Unlicensed		Nil

**Op hrs:** PPR via online form. 0900-2100 daily. No takeoffs after 1900.

**Landing Fee:** Gliders nil. All powered aircraft £12.

**Customs:** Nil. **Hangarage:** Nil. **Maintenance:** Nil.

**Remarks:** PPR no longer via telephone. PPR can only be obtained using the online form on the Edgehill Gliding Centre website. A visiting pilot must have received an email response to the form giving them PPR. If not, they must assume no PPR given.

**Circuits:** All powered circuits shall be to the north and to the west of the airfield at 800ft AAL. Note a curved approach or climb is required to avoid Shenington village on Rwy 28/10.

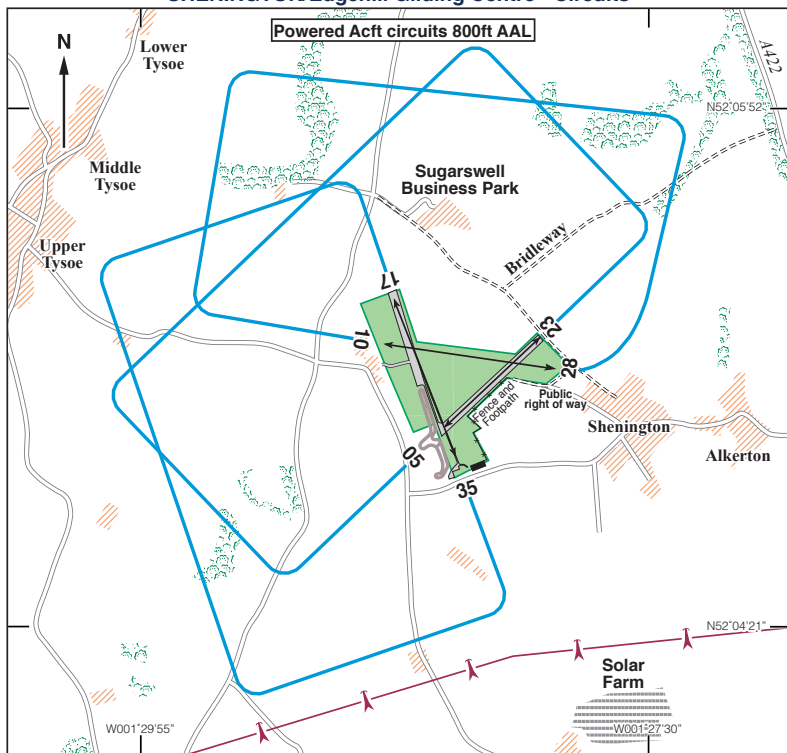
All pilots are advised to read and print the guidelines for visiting powered aircraft on the club website. The club website also directs them to the relevant pages of the Shenington Airfield Operations Manual for powered pilots.

Beware of pedestrians walking on pathways around the edge of the airfield - both the public right of way and footpath.

**Helicopters are not permitted.**

*continued*

## SHENINGTON/Edgehill Gliding Centre - Circuits



### Remarks *(continued)*:

Primarily a gliding site. Visiting powered Acft are welcome at pilot's own risk.  
 Give preference to gliders and aerotow aircraft.  
 No overhead joins due to risk of collision with launch cable.

**Warnings:** Beware of intense gliding activity in the vicinity of the airfield, including glider winch launch cables up to 3200ft amsl and aerotow launching. Keep a good look out.

**Caution:** Launch cables on the ground as well as in the air up to 2000ft aal, these must be avoided. Avoid overflying all local villages, Shenington; Alkerton; Tysoe and Epwell, also Upton House, Compton Wynyates house and the stud farm 1 nm East of Shenington village.

**Fuel:** Nil.

**Email:** [enquiries@edgehillgliding.com](mailto:enquiries@edgehillgliding.com)  
**Website:** [www.edgehillgliding.com](http://www.edgehillgliding.com)