

 Glowstone™
Flashlight



WEARABLE
HANDS FREE
LIGHTING



UP TO
60
HOURS
RUNTIME

13MM
ULTRA-THIN



WIRELESS
POWERED



900
LUMENS

75
GRAMS



51MM
X **68MM**



SMALLER THAN A BANK CARD



CRI
95+

WATERPROOF
IP69K



MODE

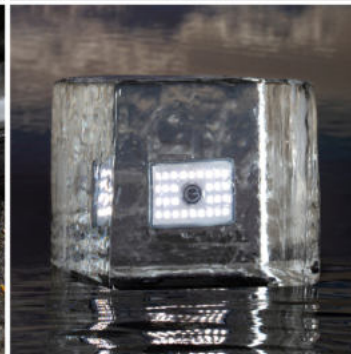
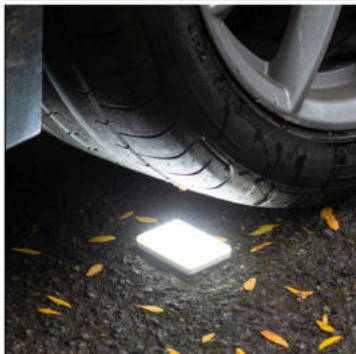
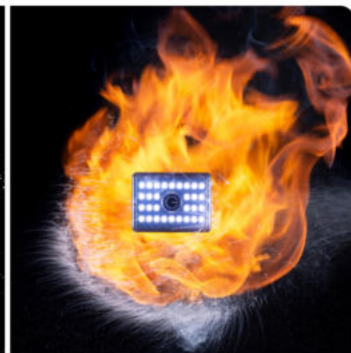
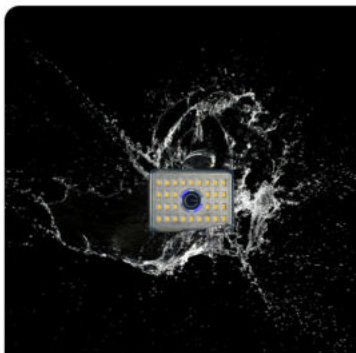
DAILY USE
50% BRIGHTNESS
4 LED
CANDLE (1 LED)
100% BRIGHTNESS
BIKE (FLASHING)
STROBE
SOS
EDGE LIGHTING

LUMENS

300
450
120
30
900
325
600
200

RUNTIME

7 HOURS
4.5 HOURS
16 HOURS
60 HOURS
1.2 HOURS
4.5 HOURS
4.5 HOURS
23 HOURS
60 HOURS



BUILT TO SURVIVE

Inherently tough, the flashlights' metal spine is sealed in a soft, yet strong silicone body, preventing any water, gas or dust ingress.

Intrinsically safe by design, the patented flashlight prevents internal gas build up, removing the need for venting. This wireless powered wearable light is suitable for use in the most hazardous environments.

(ATEX Rated- Zone 0)

ONE LIGHT, 100+ USES

The Flashlight's shape and size mean the flashlight can easily be customized for almost anything, whether its DIY, Photography or even SCUBA Diving.

- Wear it using the Belt Clip.
- Use it as a hand torch with its tripod stand handle.
- Stick it to smooth surfaces using a nanosuction pad.
- Attach it to any GoPro™ accessory with its light bracket.

Attaches to:

- Action cameras
- Pipes and branches



TRIPOD STAND HANDLE

Attaches to:

- Glowstone accessories Including Tripod & Headstraps
- Keyrings
- Attaches to GoPro™ accessories.



LIGHT BRACKET

Attaches to:

- Arm straps
- Headbands
- Rucksacks
- Pockets & belts



BELT CLIP

Attaches to:

- Smooth surfaces



NANO SUCTION PAD

A huge range of other accessories are available to adapt your flashlight to your needs. Giving you light where you need it.



T-Piece



1/4" Thread camera mount



Phone clamp



Helmet slider and rail



Red filter



Carry case



Bike mount



Helmet strap



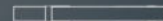
Hot shoe mount



Hand Mount



Head strap



Arm strap



Scuba handle



10 Watt wireless charging pad & USB cable



Drawstring Bag

Features



Max Output
900 LM



Colour Temperature
5600K - Noon daylight
colour



**Waterproof, Gasproof,
and Dustproof**
(IP69K)



Impact Rating
K10 on side
K9 on front face



Run Time
100% output for 1.2 hours,
2% for 60 hours

FLASHLIGHT PACK

The BBC-award winning Glowstone Flashlight is an incredibly bright rubber block of light that attaches to anything and lights up everything. It emits a photography standard blanket of pure white light with an excellent colour rendition (CRI 95+)

Supplied with:

- Glowstone Flashlight
- Nanosuction Pad
- Belt Clip
- Flashlight Bracket



Product	Barcode	Wholesale	Retail	Pack Dimensions
White Flashlight Pack	726597084208	£32	£69.99	175 x 105 x 21mm
Grey Flashlight Pack	751313212290	£32	£69.99	175 x 105 x 21mm

Features



Max Output
900 LM



Colour Temperature
5600K - Noon daylight
colour



**Waterproof, Gasproof,
and Dustproof**
(IP69K)



Impact Rating
K10 on side
K9 on front face



Run Time
100% output for 1.2 hours,
2% for 60 hours

CHARGER PACK

The BBC award winning Glowstone Flashlight is the world's most versatile flashlight. Wireless. Waterproof. Wearable. Virtually indestructible.

This is the flashlight you've always wanted. Charger included.

Supplied with:

- Glowstone Flashlight
- Nanosuction Pad
- Belt Clip
- 5V 2A Wireless Charging Pad and USB Cable



Product	Barcode	Wholesale	Retail	Pack Dimensions
White Charger Pack	726597084185	£37	£79.99	175 x 105 x 21mm
Grey Charger Pack	751313212306	£37	£79.99	175 x 105 x 21mm

Features



Max Output
900 LM



Colour Temperature
5600K - Noon daylight
colour



**Waterproof, Gasproof,
and Dustproof**
(IP69K)



Impact Rating
K10 on side
K9 on front face



Run Time
100% output for 1.2 hours,
2% for 60 hours

Supplied with:

- Glowstone Flashlight
- Nanosuction Pad
- Belt Clip
- 5V 2A Wireless Charging Pad and USB Cable
- 2X Thumb Screws
- Glowstone Tripod
- Flashlight Bracket
- Head Strap
- Arm Strap
- Camera Mount
- T-Piece



ESSENTIALS PACK

The BBC award winning Glowstone Flashlight is the world's most versatile flashlight. Wireless. Waterproof. Wearable. Virtually indestructible. This is the flashlight you've always wanted. Clip it, Stick it, Stand it, Clamp it.

Product	Barcode	Wholesale	Retail	Pack Dimensions
White Essentials Pack	726597084192	£46	£99.99	200 x 155 x 90mm
Grey Essentials Pack	751313212313	£46	£99.99	200 x 155 x 90mm

Features



Max Output
900 LM



Colour Temperature
5600K - Noon daylight
colour



**Waterproof, Gasproof,
and Dustproof**
(IP69K)



Impact Rating
K10 on side
K9 on front face



Run Time
100% output for 1.2 hours,
2% for 60 hours

BIKE PACK

Our BBC award winning Bike Pack is the perfect companion for those on two wheels. With the Glowstone Flashlight you can be sure to always be seen, and always know what's in front of you.

Built to survive all conditions, no matter where you're riding.

Supplied with:

- 2X Glowstone Flashlight
- 2X Nanosuction Pad
- Belt Clip
- 5V 2A Wireless Charging Pad and USB Cable
- 2X Thumb Screws
- 2X Flashlight Brackets
- Arm Strap
- Helmet Rail & Slider
- 2X Bike Mounts
- Helmet Strap
- Red Filter



Product	Barcode	Wholesale	Retail	Pack Dimensions
White Bike Pack	726597084178	£66	£139.99	200 x 155 x 90mm
Grey Bike Pack	751313212337	£66	£139.99	200 x 155 x 90mm