

Remarks (continued):**Helicopter Operations**

- a) A helicopter reference point is established at Burlton and will be called Burlton Gate. A point between the north edge of Burlton village and Burlton Grange Farm. 525000.49N 0024817.86W, 266°T/1.3 nm from Sleaf ARP.

- b) Helicopters inbound from the south, west and north. Mon-Fri 0900-1700 (0800-1600) Helicopters are to route via Burlton Gate at 800 ft QFE.

Note: Routeing is over military helicopters which operate to the west of the active runway not above 500 ft QFE. Track 086°T for the intersection of the usable runways (05/23, 18/36). Maintain south of the disused runway (10/28) and windsock at all times. Descend only after crossing the intersection, turn in the circuit direction and make an approach to the intersection via the runway in use. From the intersection, taxi to the apron.

- (c) Inbound helicopters from the west may elect to join using a standard 2000 ft QFE overhead join to the fixed wing circuit at any time. Aerobatics will be suspended for inbound helicopters once they have called "Burlton gate inbound", until they are to the east of the active runway.
- (d) Helicopters inbound from the east at all times. Helicopters must remain clear of Shawbury ATZ at all times. Join the circuit using a standard overhead join from 2000 ft QFE. Make an approach to the intersection of the usable runways (05/23, 18/36), using the active runway. From the intersection taxi to the apron. Or, keep clear of the Sleaf ATZ and route inbound via Burlton Gate.
- (e) Helicopters Outbound to the south, west or north.

Procedure during the period Mon-Fri 0900-1700 (0800-1600). When traffic permits, taxi to the intersection of the usable runways (05/23, 18/36). Depart using the runway in use and climb on runway heading to 800 ft AGL. Route directly towards the Burlton Gate.

Note: Routeing is over military helicopters operating not above 500 ft QFE. Call "Callsign, Burlton Gate, Outbound" and track en-route clear of the Sleaf ATZ and RAF Shawbury MATZ.

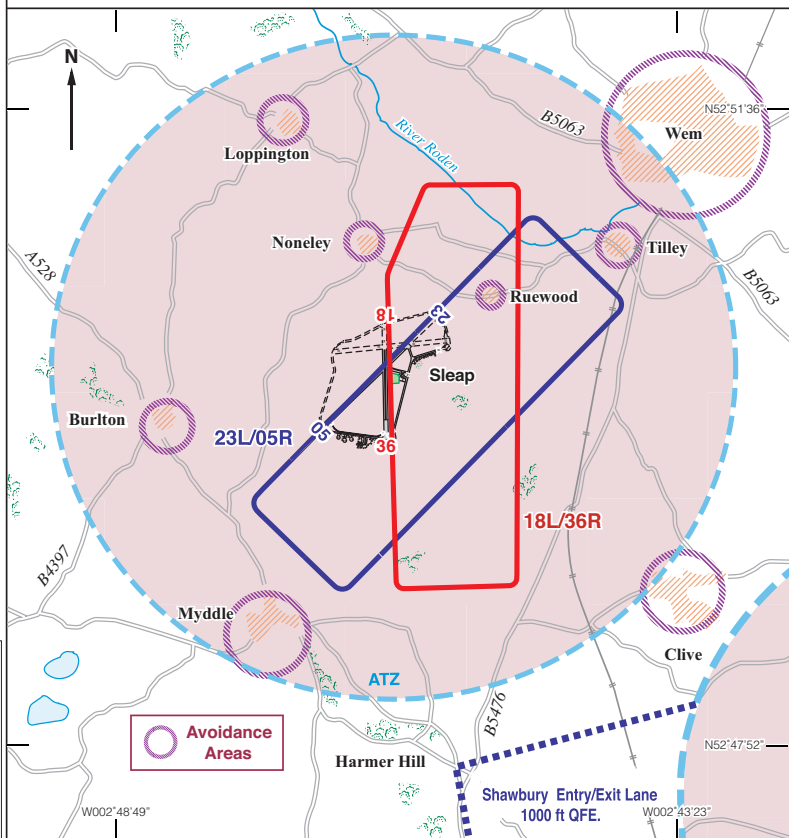
- (f) Procedure at all other times. When traffic permits, taxi to the intersection of the usable runways (05/23, 18/36). Route directly towards the Burlton Gate, call "Callsign, Burlton Gate, Outbound", climbing not above 800 ft. Remain South of the disused runway and windsock at all times.
- (g) Helicopters outbound to the east at all times. When traffic permits, taxi to the intersection of the usable runways (05/23, 18/36). Depart using the runway in use. Climb in the circuit direction to above Shawbury ATZ and depart to the east. When RAF Shawbury is active contact Zone before entering MATZ.

continued

EGCV

SLEAP Circuits

Changes: Circuits amended.



Circuit Height 1000 ft QFE.

Civil fixed wing aircraft, helicopters and gliders should fly circuits to the EAST of the airfield at all times.

Outside of military helicopter operating hours, ie in the evening and at weekends, gliders will fly West of the AD not above 800 ft.

Noise: Adjust circuit to avoid over flying local villages and town, particularly Wem, Clive, Loppington, Noneley, Burlton and Ruewood.

Aircraft, especially high-powered singles or twins, departing from Rwy 36 should make a 10° right turn after take-off to avoid Noneley. All types are to follow the circuit ground tracks as published. Under no circumstances are circuits, at any height, to be flown over or inside of the chicken farm, to the East of the field. Circuits must not be extended or fly to the East of Clive due to the proximity of RAF Shawbury.

Caution: RAF Shawbury entry/exit Lane exists at 1000 ft QFE just to the SE of the SLEAP ATZ.