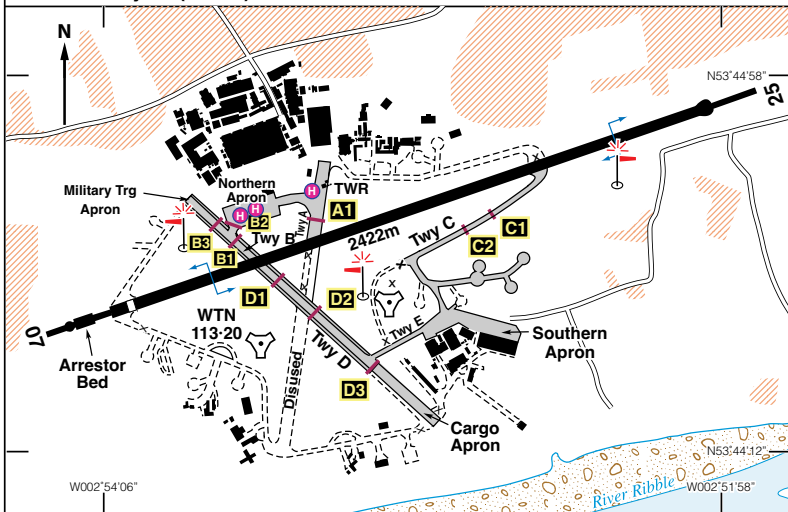


EGNO

N53 44:71 W002 52:98 **WARTON** 54 ft AMSL

6 nm W of Preston. MCT 113:55 320 32:1. WAL 114:10 027 23

c/s Warton. TWR **130-805**. RAD/LARS **129-530**. TALKDOWN **129-730**. ATIS **121-730**
 NDB 'WTN' 337-0 (254°M/0.5 nm to Thr Rwy 25). TACAN 'WTN' 113-20 (On A/D).
 ILS/DME Rwy 25 (254°M) 'I WQ' 109-90



Rwy	Dim(m)	Surface	TORA(m)	LDA(m)	Lighting
07/25	2422x46	Asphalt	07-2422 25-2341	07-2358 25-2341	Ap Thr Rwy PAPI 3° Ap Thr Rwy PAPI 3°

Op hrs: Strictly PPR. Mon-Thu 0730-1900; Fri 0730-1700. **ATZ active H24.**

Customs: By arrangement.

Hangarage: Limited. **Maintenance:** Limited.

Remarks: Operated by BAE Systems, Warton Aerodrome, Warton, Preston, Lancs PR4 1AX. Strictly PPR from Civil Ops. Not available to non radio aircraft.
 All circuits to the south of Rwy 07/25 at 1000 ft. Red and white marker boards are positioned 35 m to the south of Rwy 07/25 for its full length, 1000 ft apart.
 Arrestor gear on Rwy 07/25, 395 m from end of full-width pavement. Cables are flush with runway but pilots of light aircraft are advised to touch down after the cable housing.
 ATC required for all engine starts. VFR routings, local ATC instructions will be issued to avoid the Blackpool ATZ and overflight of EG R312

High visibility clothing must be worn on the apron at all times.
 Westerly departures should avoid overflying Lytham. Easterly departures should avoid remaining low or initiating full power climb overhead Preston.

Warnings: Military fast jet activity on the aerodrome and local area. Bird hazard. Restricted Area EG R312 and Blackpool ATZ are in close proximity to the AD.

VRPs: Garstang Marina; M6 J30/M61; M6 J32/M55 & Southport Pier, for further details see page 52.

Fuel: Avtur.	Tel: 01772 852374 ATC. 852303 Civil Ops. 01772 856060 ATIS.
	Fax: 01772 634706.