

EGHH

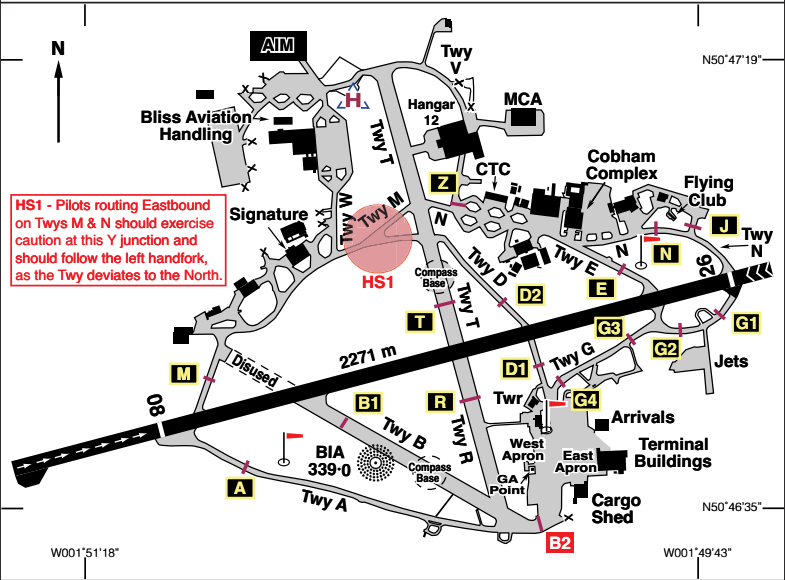
N50 46:80 W001 50:55 **BOURNEMOUTH (Hurn)** 38 ft AMSL

3.5 nm NNE of Bournemouth. **SAM 113:35 244 21-6**

c/s Bournemouth. APP/RAD 119-475. TWR 125-600. GND 121-700. ATIS 133-725.

NDB 'BIA' 339.0 (On A/D)

ILS/DME Rwy 08 (076°M) I-BMH 110.50. ILS/DME Rwy 26 (256°M) I-BH 110.50.



Rwy	Dim(m)	Surface	TORA(m)	LDA(m)	Lighting
08/26	2271x46	Asphalt	08-2271 26-2026 *	08-1838 26-1970	Ap Thr Rwy RCL PAPI 3° Ap Thr Rwy RCL PAPI 3°

* 2211 available on request, only three such departures permitted 0730-0900 and 16-1800.

Op hrs: 0630-2130 daily. O/T by arrangement. (Contact AD manager)

Landing Fees: Up to 1000 kg £23.96; 1001-1500 kg £35.94; 1501-2000 kg £47.92; 2001-2500 kg £59.88; 2501-3000 kg £71.89.

Parking Fees: First 1.5 hrs free, thereafter £19.37 per 24 hours. (Up to 3 tonnes)

Hangarage: Available. **Maintenance:** Available. **Customs:** Available.

Remarks: Operated by Bournemouth Airport Ltd. Aerodrome situated within the Bournemouth CTR & Solent CTA. Class 'D' Controlled Airspace regulations apply.

Pilots may use Transponder code 0011 when flying in the vicinity of Southampton/Bournemouth Zones/Areas and monitoring Solent Radar frequency. Selection of the code does not imply the provision of any form of Air Traffic Service. See page 30.

Solent CTA/Bournemouth and Southampton CTRs and VRPs Chart is located after Southampton VRPs page.

continued