

EGNR

N53 10·68 W002 58·67

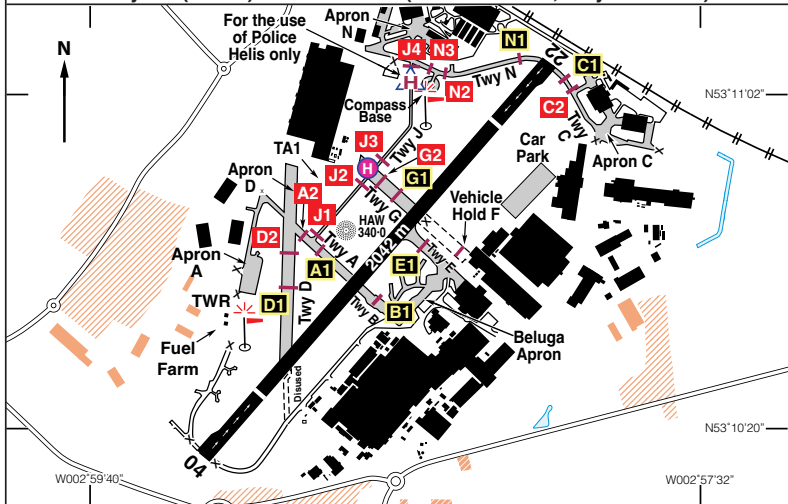
HAWARDEN

35 ft AMSL

3·5 nm WSW of Chester.

WAL 114·10 160 14

RAD 120·055. Director 130·015. TWR 124·955. ATIS 125·430 & egnr.airbrief.net
NDB 'HAW' 340·0 (On A/D). ILS/DME Rwy 22 (224°M) 'I-HDN' 110·35
ILS/DME Rwy 04 (041°M) 'I-HWD' 110·35 (LLZ offset 2·6°, Rwy QFU 044°).



Rwy	Dim(m)	Surface	TORA(m)	LDA(m)	Lighting
04/22	2042x45	Asphalt/ Concrete	04-1962 22-2042	04-1660 22-1742	Ap Thr Rwy PAPI 3·5° RH Ap Thr Rwy PAPI 3° ABn Wh/Gn

Op hrs: Strictly PPR. Mon-Fri 0630-2100; Sat & Sun 0830-1900. OT by NOTAM

Landing Fee: Up to 1500 kg £19.87 Mon-Fri; £24.85 Sat, Sun & PHs; incl VAT

Hangarage: Hawarden Air Services, Tel: 01244 538568.

Maintenance: Available. **Customs:** 24 hrs PNR.

Remarks: Operated by Airbus Operations Ltd, Hawarden Airport, Broughton, Chester, N Wales, CH4 0DR. Strictly PPR.

Non-radio aircraft prohibited.

Aircraft below 450 kg (MTWA) are prohibited.

Circuits at 1000 ft QFE, RH on Rwy 04, LH on Rwy 22.

Aircraft over 2999 kg mandatory handling, contact Chester Handling Services, Apron 'N', Tel: 01244 536853, Fax: 01244 537268.

High visibility clothing to be worn on all aprons.

Marshalling is mandatory on all aprons.

Noise Abatement: Departing aircraft Rwy 22 turning left must climb straight ahead to DME 1·5nm before turning on track. Jet/Turbo Prop aircraft must join final not less than 1000 ft QFE.

Aircraft should avoid overflying built up areas and houses.

Circuit Height: Piston engine fixed wing 1000 ft; Jet or turbo prop acft 1500 ft; Helicopters 800 ft.

continued