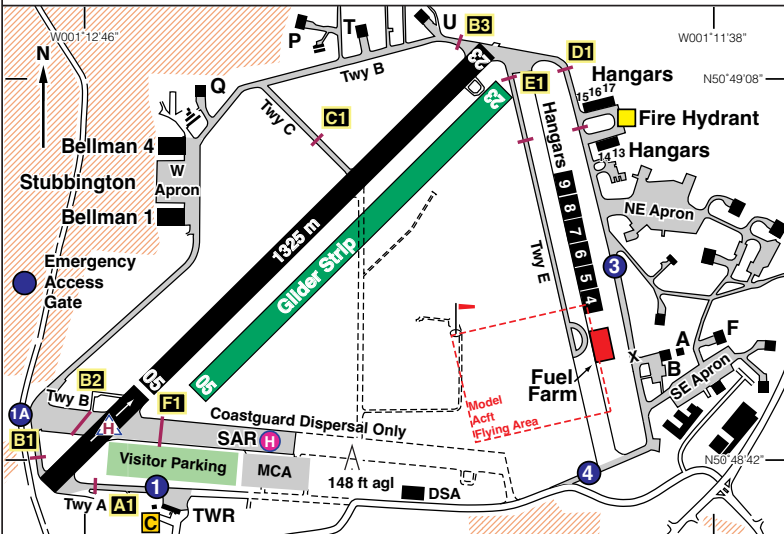


EGHF

N50 48'88 W001 12'33 **LEE-ON-SOLENT (DAEDALUS)** 32 ft AMSL

4 nm S of Fareham. **SAM 113'35 151 10. MID 114'00 240 26'3**

c/s Lee Radio 118'925. Fleetlands Information 135'700. Solent RADAR 120'225.



Rwy	Dim(m)	Surface	TORA(m)	LDA(m)	Lighting
05/23	1325x30	Asphalt	05-1178 23-1025	05-1025 23-1025	Nil Nil

Op hrs: 0900-1800 (Sum), 0900-1630 (Win) Daily. Strictly PPR - Visitors briefing required.

Landing Fee: Published on website. **Customs:** Mandatory out of hours agreement apply.

Hangarage: Limited. **Maintenance:** See website for based companies.

Remarks: Operated by Regional & City Airports Ltd, Solent Airport, Daedalus, Lee-on-the-Solent, Hampshire, PO13 9FZ.

Aerodrome partially situated within the Fleetlands ATZ.
CAA Licensed aerodrome.

Mandatory PPR and Visitor Briefing tool online at
http://www.solentairport.co.uk/solent_airport/pilotbriefing.aspx

Powered and non-powered aircraft operate in different circuits with powered at 1000 ft aal, (See circuit diagram page, overleaf)

Caution: Southampton Controlled Airspace 3 nm to NW.
Fleetlands heliport 1.9 nm NE. Gliding: danger, winch cables and aero-tows.
No dead-side/overhead or crosswind joins.
Do not use grass surfaces unless pre-briefed or familiar with them.

Noise Abatement: Do not overfly built up areas including Hill Head and Stubbington.
Based SAR helicopters have priority on operational flights ("Rescue" call-sign)

<p>Fuel: 100LL, Jet A-1. See website for details.</p>	<p>Tel: 01329 824748 Ops Email: ops@solentairport.co.uk Website: www.solentairport.co.uk</p>
--	---