

# EGHE

N49 54:80 W006 17:50

**SCILLY ISLES/St. Mary's**

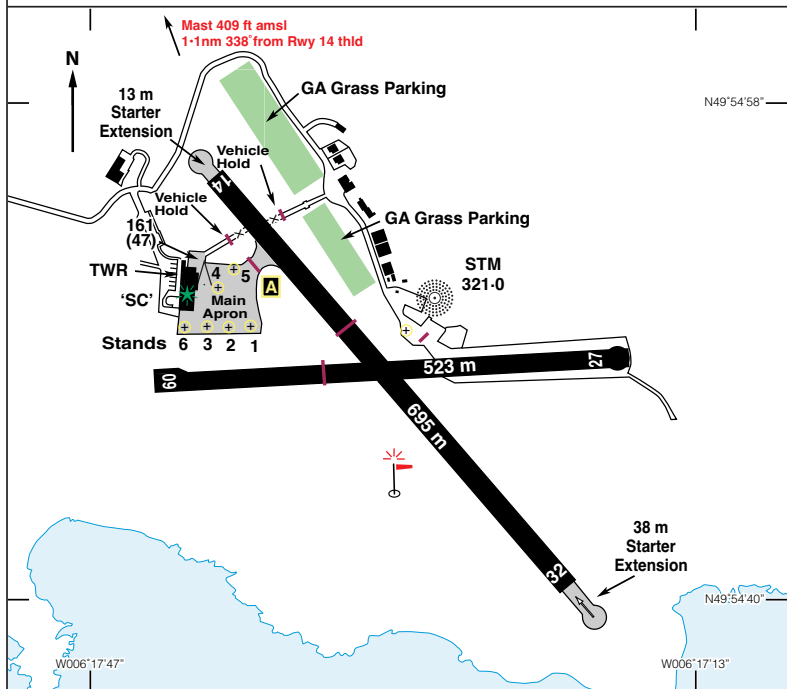
116 ft AMSL

1 nm E of Hugh Town.

**LND 114:20 247 28:6**

**c/s Scillies. APP/TWR 124-875.**

**NDB 'STM' 321-0 (On A/D).**



Rwy	Dim(m)	Surface	TORA(m)	LDA(m)	Lighting
09/27	523x18	Asphalt	09-523	09-523	Thr Rwy PAPI 3-5°
			27-510	27-501	Ap Thr Rwy PAPI 3-5°
14/32	695x23	Asphalt	14-623	14-603	Thr Rwy PAPI 3-5°#
			32-647	32-603	Thr Rwy PAPI 3-5°
					IBn 'SC' Gn

# Rwy 14 PAPI signals are visible to the East of runway extended centreline where normal obstacle clearance is not guaranteed. They should only be used when aircraft is aligned with the runway.

*continued*