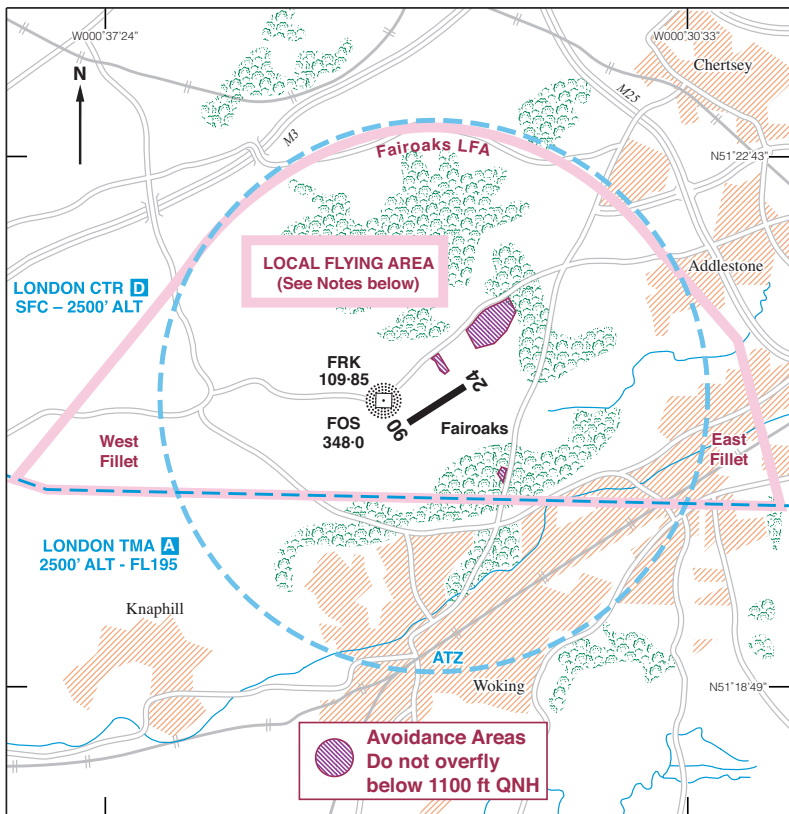


# FAIROAKS ATZ & LOCAL FLYING AREA



VFR flights may take place within the LFA subject to the following conditions:

- (a) In compliance with Class D airspace weather minima.
- (b) Maximum Altitude 1500 ft QNH.

**Note 1.** Pilots of aircraft flying in the local flying area are responsible for providing their own separation from other aircraft operating in the relevant airspace.

**Note 2.** Aircraft may approach Fair Oaks from the southern quadrant, between the western and the eastern fillets, but must remain west of the M25 motorway.

Aircraft unable to operate VFR may operate special VFR within the LFA subject to the following conditions:

- (a) Remain clear of cloud and with the surface in sight;
- (b) Maximum altitude: 1500 ft QNH;
- (c) Fly at speed of 140 kts IAS or less;
- (d) A minimum cloud ceiling of 600 ft;
- (e) A minimum visibility of 3 km;
- (f) In compliance with the requirements of ENR 1.2.

Aircraft operating on a VFR/SVFR clearance in the London CTR inbound to Fair Oaks must not assume permission has been issued to penetrate the Fair Oaks ATZ.

Heathrow Radar will, whenever possible, permit an aircraft to leave the frequency temporarily to obtain such permission. If this is not possible, aircraft must leave the Zone clear of the ATZ and route to Fair Oaks from a southerly direction.