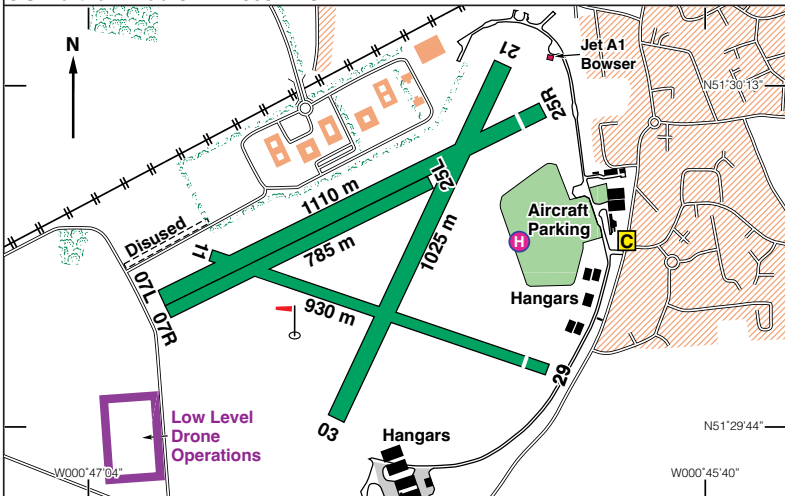


# EGLM

N51 30:04 W000 46:49 **WHITE WALTHAM** 127 ft AMSL  
 2 nm SW of Maidenhead. CPT 114:35 091 16:6. BNN 113:75 215 15.9  
 LON 113:60 277 11:5. WOD 352:0 056 4:9  
 c/s Waltham Radio 122-605 A/G.



Rwy	Dim(m)	Surface	TORA(m)	LDA(m)	Lighting
03/21	1025x45	Grass	03-1025	03-1025	Nil
			21-1025	21-1025	Nil
07L/25R	1110x45	Grass	07-1110	07-1110	Nil
			25-1110	25-1045	Nil
07R/25L	785x25	Grass	07-1110	07-1110	Nil
			25-1110	25-1045	Nil
11/29	930x30	Grass	11-930	11-930	Nil
			29-930	29-867	Nil

**Op hrs:** All acft are required to phone for PPR. 0800-1630 (0700-1830); or SS+30 whichever is earlier. OT by arrangement.

**Landing Fee:** Flexwing £7; Private: SE £15; Twin £18; Commercial: Single/Twin £28.

**Parking:** Overnight Single £15; Twin £18. Helicopters £28. All Inc VAT.

**Maintenance :** Available. **Hangarage:** Limited. **Customs:** 4 hrs PNR.

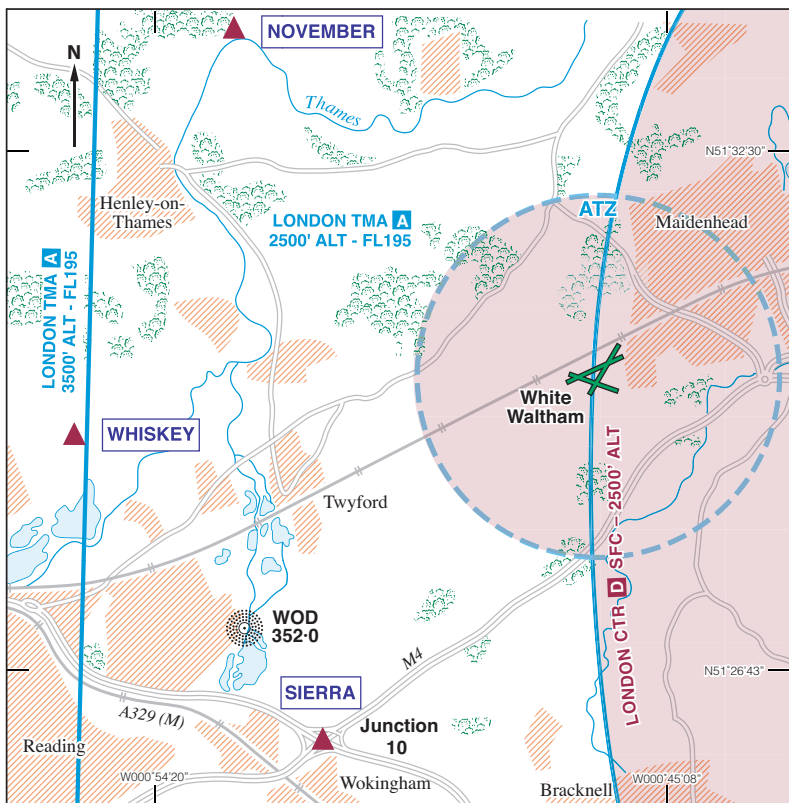
**Remarks:** Operated by White Waltham Airfield Ltd. Non-radio aircraft only permitted by prior arrangement. Grass runways, may be rough/undulating, are marked with chalk centre lines and runway designators. Join overhead at 1200 ft QFE. Circuits at 800 ft QFE, variable direction. Reporting Points are shown on the Chart overleaf. No overhead departures. Noise Abatement and Circuits - See pages 653 & 654. Use of transponders is mandatory for suitably equipped acft. No taxiways, vacate runway when able. Visitors parking in front of the club house. **Helicopters** should arrive/depart low level avoiding fixed wing circuits and built up areas. Parking is to the West of the fixed wing parking area, unless by prior arrangement.

**Caution:** Vehicles use the perimeter track which bounds manoeuvring area to the North and East of the AD. Public road runs NE/SW 140 m from Thld Rwy 29.

**Restaurant:** Licensed restaurant and Club facilities available. Tel: 01628 823799.

*Continued*

# WHITE WALTHAM AREA CHART



White Waltham Local Flying Area (LFA) is defined as that portion of the ATZ contained within the London CTR. VFR Flights within the LFA may take place without compliance with IFR requirements subject to the following conditions:

1. Aircraft to remain below cloud and in sight of the ground.
2. Maximum altitudes: 1500 ft QNH, provided that aircraft can remain at least 500 ft below cloud; otherwise 1000 ft QNH.
3. Minimum flight visibility 3 km.

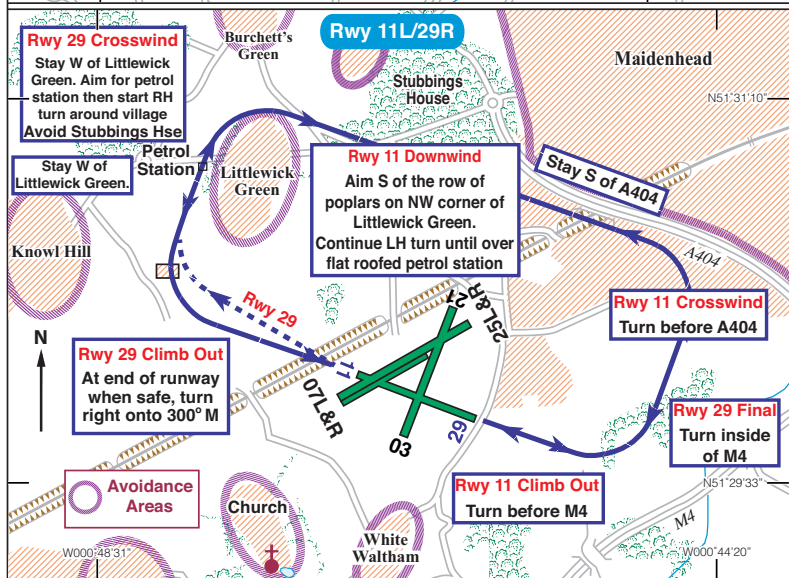
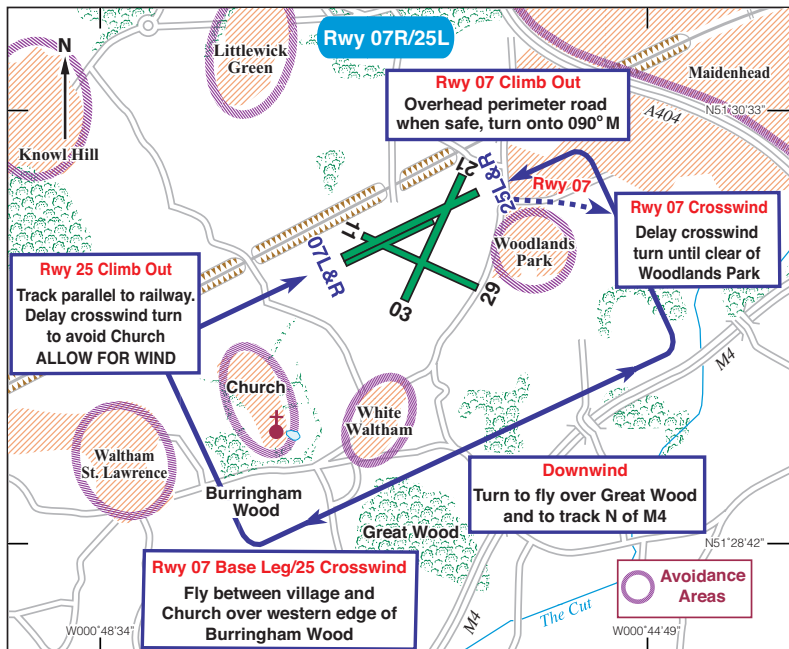
**Note.** Pilots of aircraft flying in the local flying area are responsible for providing their own separation from other traffic operating in the relevant airspace.  
SVFR flights are required to be separated by Heathrow Radar.

Inbound aircraft are to report their position and altitude in relation to one of the following Reporting Points:

- From North — **NOVEMBER** — bend in river north of HENLEY.
- From West — **WHISKEY** — North of lakes East of READING.
- From South — **SIERRA** — Motorway junction north of WOKINGHAM (Junction 10 M4).

Users of the AD should be familiar with the WLAC operation manual available via the AD or club website [www.wlac.co.uk](http://www.wlac.co.uk)

# WHITE WALTHAM - NOISE ABATEMENT & CIRCUITS



# WHITE WALTHAM - NOISE ABATEMENT & CIRCUITS

