

EGEW

N59 21'02 W002 57'00

WESTRAY

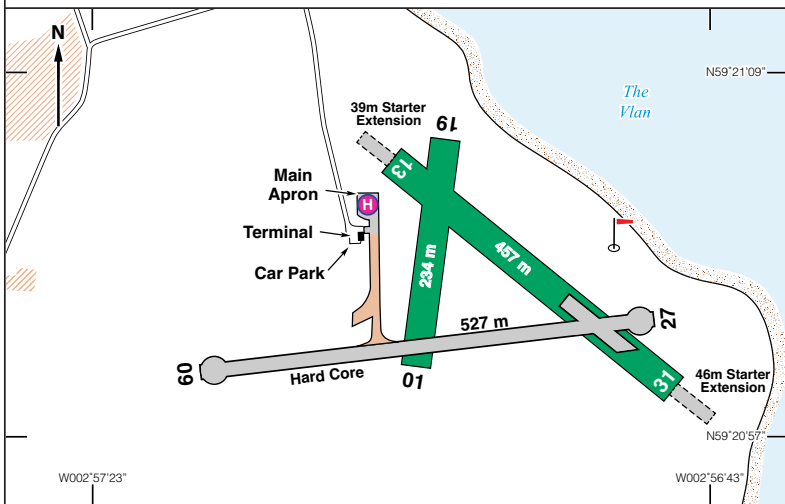
29 ft AMSL

24 nm N of Kirkwall Airport.

WIK 113-60 010 53-7

KWL 108-60 001 23-5

Recommend contact Kirkwall APP 118-305.



| Rwy | Dim(m) | Surface | TORA(m) | LDA(m) | Lighting |
|-------|--------|-----------|---------|--------|----------|
| 09/27 | 527x18 | Hard Core | 09-527 | 09-527 | Thr Rwy |
| | | | 27-527 | 27-527 | Thr Rwy |
| 13/31 | 457x30 | Grass | 13-411 | 13-372 | Thr Rwy |
| | | | 31-418 | 31-372 | Thr Rwy |
| 01/19 | 234x30 | Grass | 01-234 | 01-234 | Nil |
| | | | 19-234 | 19-234 | Nil |

Op hrs: Strictly PPR.

Landing Fee: See website www.orkney.gov.uk/Service-Directory/T/airfields.htm

Customs: Nil.

Hangarage: Nil.

Maintenance: Nil.

Remarks: Licensed aerodrome (day use only) operated by Orkney Islands Council, Council Offices, Kirkwall, Orkney KW15 1NY. A valid indemnity is required.

Visiting aircraft accepted on prior permission and at pilot's own risk Mon-Fri 0900-1700.

Scheduled Air Services daily.

High ground 528 ft aal 557 ft amsl 202°/4 nm.

Warnings: Poor drainage, may be patches of standing water after periods of heavy or continuous rainfall on Rwy 01/19 and 13/31.

Rwy 09/27 - Graded Hard Core runway possibly unsuitable for light aircraft with low ground /propeller clearance due to loose gravel on the surface. Carry out power checks on the asphalt apron or on the grass.

Grass runways can be very soft after periods of prolonged rainfall especially in winter.

Fuel: Nil.

Tel: 01856 873535 Ext 2305 PPR.

Fax: 01856 876094 Council

Email: developmentandinfrastructure@orkney.gov.uk