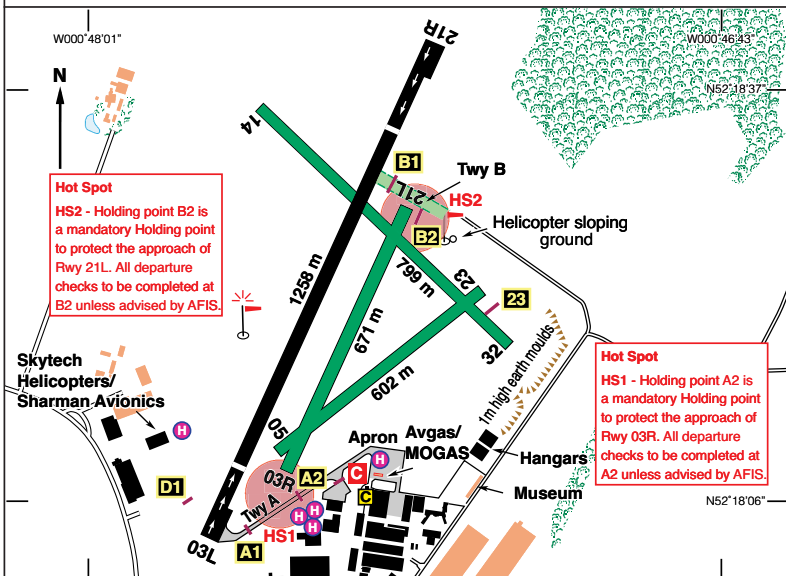


EGBK

N52 18-37 W000 47-53 **NORTHAMPTON/Sywell** 424 ft AMSL
 5 nm NE of Northampton. **DTY 116-40 060 14. HON 113-65 098 32-1**

c/s Sywell Information. 122-705. AFIS.



Hot Spot
 HS2 - Holding point B2 is a mandatory Holding point to protect the approach of Rwy 21L. All departure checks to be completed at B2 unless advised by AFIS.

Hot Spot
 HS1 - Holding point A2 is a mandatory Holding point to protect the approach of Rwy 03R. All departure checks to be completed at A2 unless advised by AFIS.

Rwy	Dim(m)	Surface	TORA(m)	LDA(m)	Lighting
03L/21R	1258x30	Concrete	03L-1199 21R-1100	03L-1000 21R-1000	Thr Rwy APAPI 3-5° Thr Rwy APAPI 3-5°
03R/21L	671x30	Grass	03R/21L-671	03R/21L-671	Nil
05/23	602x30	Grass	05/23-602	05/23-602	Nil
14/32	799x25	Grass	14/32-799	14/32-799	Nil
IBn 'NN' Gn					

Op hrs: Strictly PPR by telephone only - 01604 801630. SUMMER 0800-1700 UTC. WINTER 0900-1800 UTC.

Landing Fee: Microlights £12.00. Single Engine piston £16.50. Twins on request. Prices VAT inc.

Hangarage: Ltd on request. **Maintenance:** Available. **Customs:** PNR.

Remarks: Operated by Sywell Aviation Ltd, Sywell, Northampton NN6 0BT. PPR. All visiting helicopters to Sloane Helicopters are strictly PPR through Tel: 01604 790595. This number is strictly for helicopters visiting Sloane - NO other aircraft. PPR should also be obtained from AFIS. Fixed-wing circuits at 1000 ft QFE; LH on 03, 14 & 23, RH on 05 and 21 & 32. Helicopter circuits at 800 ft QFE in opposite direction to fixed-wing.

Continued