

# **POOLEYS FLIGHT GUIDE**

Elstree Aerodrome, Elstree

Hertfordshire WD6 3AW.

Tel: 020 8207 3749. Fax: 020 8953 2512

E-mail: [editor@pooleys.com](mailto:editor@pooleys.com)

## **AMENDMENT**

AN 2-19. 25th April 2019

### **Replacement/Additional Pages**

125-126 . . . . . Biggin Hill

481-482 . . . . . Northampton/Sywell

651-652 . . . . . White Waltham

793-794 . . . . . Manston Helipad (New chart)

## **AIRNOTES**

Airnotes provide a comprehensive listing of all changes applicable to the current Flight Guide. These are updated every 28 days in line with the AIRAC cycle and are available via the Pooleys Website.

Changes notified since the last issue of Airnotes are identified by a 'bullet' in the left-hand margin.

To obviate the necessity of incorporating lengthy manuscript amendments, it is suggested that pages which are subject to amendment be suitably annotated, and then refer to the Airnotes, as required, for details of the changes.

# POOLEYS FLIGHT GUIDE

## AIRNOTES

AN 2-19. 25th April 2019

Page

### CLASSIFICATION OF UK AIRSPACE

- **1 Add new paragraph, Glider operations in Class A airspace.**  
In certain notified portions of Class A airspace, gliders are permitted to operate without reference to ATC in accordance with specified conditions and neither separation nor traffic information will be provided in respect of such flights. When such activity occurs, such airspace will be segregated from other traffic, which is provided with at least standard separation from the segregated airspace. Such segregated activities are undertaken in accordance with the flexible use of airspace provisions contained within Commission Regulation (EC) 2150 of 2005.

### SPECIAL VFR FLIGHT

- **8 Add new paragraph, FOLLOWING LINE FEATURES**  
**10.** An aircraft which is flying within the United Kingdom with the surface in sight and following a road, railway, canal or coastline, or any other line of landmarks, should fly to the right of the line feature unless flying within controlled airspace in accordance with instructions given by the appropriate air traffic control unit.  
**11.** 'With the surface in sight' means with the flight crew being able to see sufficient surface features or surface illumination to enable the flight crew to maintain the aircraft in a desired attitude without reference to any flight instrument and 'when the surface is not in sight' is to be construed accordingly. (Air Navigation Order 2016 Schedule 1 'Interpretation').

### ATS Units Participating in LARS

- **26/27 EAST MIDLANDS** Amend Frequency from 134•175 to 134•180.
- 26 EXETER** Op Hrs: Amend to, Mon-Fri 0630-0230; Sat 0600-2100; Sun 0600-2200. (Mon-Sun 0600-0300 Summer).
- 26 LEUCHARS** Op Hrs: Amend to, 0900-1700.
- 26 NEWQUAY** Op Hrs: Amend to, 0730-2130.
- 26 YEOVILTON** Op Hrs: Amend to, Mon-Thu 0830-1630, Fri 0830-1300.
- 26 NOTES 1:** Amend to, The East and West LARS areas are divided at the Western edge of Berry Head CTA 1, 3 & 5.

### FREQUENCY MONITORING CODES

- **35 6.10.3727** Brize Norton - amend frequency from 119•000 to 124•275.

### DACS & DAAIS

- **40 D213** Kineton Amend DAAIS to, Coventry Information on 123•825 when open; at other times London Information on 124•600.
- **41 Add D323 A-R** Southern MDA ...When Notified  
DAAIS: London Information 124•475. Pre flight information: CRC Boulmer, Tel: 01665 572312. Booking: Military Airspace Booking, Tel: 01489 612495.  
**D403**, Renamed to D403B. **D406**, Renamed to D406A.
- **42 D512**, Renamed to D512B. **D513**, Renamed to D513C.

## AERODROMES

- **73 ABBOTS BROMLEY** Com/Nav: Amend East Midlands APP 134•175 to, East Midlands RAD 134•180, Tatenhill 124•075 to 124•080.
- **99 BARROW/Walney Island** Remarks: Add, **Helicopter Ops** in support of Walney wind-turbine field. Helicopters operate from Barrow Heliport (2nm NE of the AD) via the aerodrome overhead. Transit heights 500ft-2000ft (Walney QNH) Helicopters will receive AFIS from EGNL.
- 101 BECCLES** Com/Nav: Amend Beccles Radio to 120•380.
- 102 BEDFORD** Com/Nav: Amend Bedford Radio to 119•030.
- **117 BENBECULA** Op Hrs: Amend to, PPR 3 Hrs. Mon & Fri 0800-1745; Tue-Thu 0800-1645; (Summer 0800-1745) Sat 0800-0900, 1130-1300. Sun 1515-1645.
- 118 BENSON** Remarks: PPR, Amend to, Strictly PPR through Station Ops for landings, ATC for approach and depart.  
Circuits: Add, Military (oval) visual circuit patterns are the norm, climb to circuit height before rejoining the circuit at the upwind end of the runway.  
Contact details: Delete fax and add Tel: 01491 827015 Stn Ops.
- **125 BIGGIN HILL** Com/Nav: Amend Thames Director 133•450 to, 133•455.  
Add Hot Spot 1 centred around Hold J1/F1.  
HS1-Taxy with caution - Possible confusion between exits for J1 & F1.
- **126 BIGGIN HILL** Customs: Amend to, As Op hrs, Tel: 01959 578527. UK GAR (General Aviation Report) required prior to international arrivals.
- **130 BIRMINGHAM** Com/Nav: Add Delivery 121•930.
- **131 BIRMINGHAM** Add, Pilots of departing aircraft are to call Birmingham delivery on 121•930.
- **134 BLACKBUSHE** Holds A & C redesignated A1 & C1. Holds A2/C2/C3/G added.
- **135 BLACKBUSHE** Remarks: After Circuits: See Area Chart overleaf add the following.  
**Leaving The Circuit** On leaving the circuit it is advised that first contact is to Farnborough Radar 125•250 0800-2000L.  
**Squawks**
  - a) If remaining in the circuit, aircraft should squawk 7010.
  - b) If leaving the circuit and intending to contact Farnborough Radar 125•250, aircraft should squawk 0447.
  - c) If leaving the circuit and utilising Farnborough Radar Listening Squawk, aircraft should squawk 4572 and select 125•250 radio frequency.
  - d) If leaving the circuit and operating in the local area without contacting Farnborough Radar, aircraft should squawk 7000.
- 146 BOURNEMOUTH** Holds D1 & D2 redesignated C & D respectively. Taxiway D South of the runway redesignated as Taxiway C.
- **156 BRISTOL** Handling: Replace Menzies with DHL, Tel 01275 473554/629.
- **159 BRISTOL** Bristol Filton Heliport removed and Almondsbury Heliport added.
- **167 BRUNTINGTHORPE** Com/Nav: Amend 122•825 to, 122•830.
- 173 CAMBRIDGE** Taxiway from GA Parking Area to taxiway C now designated as taxiway N. Hold N added before entry to the GA Parking Area.
- 176 CARDIFF** Taxiway J added at the end of Twy D in the direction of the East end of the Cargo Terminal.
- 182 CARLISLE** Rwy 06/24 dimensions amended to 1829 x 30 m.
- **192 CHICHESTER/Goodwood** Com/Nav: Amend 122•450 to, 122•455.
- 203 COAL ASTON** Runway length extended to 660 m. Remarks: Caution: Add, A 200 ft drilling tower will be erected 2019 and will remain for 6 months. Position will be on the extended C/L of Rwy 29 approach.  
Pilots always use SAFETYCOM. Central grass 20m wide. Rougher grass to either side approximately both 7m. For PPR, add Mob: 07747 114971 Steve Vallé.

- 212 COVENTRY** Op Hrs: Amend to, Fri-Wed 0900-1700 (0900-1800 Summer); Thu 0900-2000 (0900-1800 Summer) Strictly PPR by telephone.  
Remarks: Add,  
Aircraft in comms with Coventry ATS may be allocated a conspicuity squawk of 0420. A/cft must not select this squawk unless instructed to do so by ATS.  
Aircraft remaining in the circuit will be allocated a conspicuity squawk of 7010. A/cft must not select this squawk unless instructed to do so by ATS.  
Allocation of either squawks does not constitute any radar service.
- 213 COVENTRY** Remarks: Add, Apron parking - as advised by ATS.
- 224 CUMBERNAULD** Remarks: Add, PPR via, Radio 120•605; Tel: 01236 722822 or email: ops@cumbernauldairport.org. Rwy 08/26 redesignated 07/25.
- 230 DEENETHORPE** Operator, amend to, Mick Hyde and Kevin Bradley.  
Contact details: amend to Tel: 01832 205054, Mob: 07966 298120.  
Email: mickhyde192@gmail.com.
- 232 DENHAM** Com/Nav: Amend 130•725 to, 130•730.
- 235 DERBY** Com/Nav: Amend East Midlands APP 134•175 to, East Midlands RAD 134•180.
- 236 DONCASTER SHEFFIELD (Robin Hood)** Com/Nav: WEF 17 December 2018 amend APP/RAD to 126•230 and ATIS to 134•955.  
GA Apron redesignated as Foxtrot Apron.
- 237 DONCASTER SHEFFIELD (Robin Hood)** Remarks: amend freq 126•225 to 126•230.
- 247 DURHAM TEES VALLEY** Stopway for Rwy 23 removed.  
Amend TORA for Take-off from intersection with Hold C from 1788m to 1770m.
- 250 DUXFORD** Com/Nav: Amend 122•075 to 122•080. Signal Square removed.
- 259 EAST MIDLANDS** Com/Nav: Amend Coms to, c/s East Midlands Radar 134•180 (LARS), 126•180, Director 120•130 (as directed). Twr 124•005. GND 121•905. ATIS 122•680. VDF 134•180.
- 260 EAST MIDLANDS** Remarks: In the third paragraph, amend 134•175 to 134•180.
- 268 EDAY** 29m starter extensions added to both ends of the runway 07/25.  
Declared distances: Amend TORA for Rwy 07 & 25 to 469 m.
- 270 EDINBURGH** Com/Nav: Amend Coms to, c/s Edinburgh APP 121•205. VDF 121•205, 118•705 (OR). TWR 118•705. GND 121•755. RAD 121•205, 128•980. ATIS 131•355.  
New Turnhouse Apron added based around taxiway H. Hold H1 removed.  
Holds G3, H3, H5, H6 and M4 added.
- 271 EDINBURGH** Remarks: In the second paragraph, amend 121•200 to 121•205.
- 272 EDINBURGH** Entry/Exit Lanes: Amend Kelty Lane to:-  
**Kelty Lane** — 3 nm wide, centre-line M90 Motorway extending from Kelty (near Northern boundary of Edinburgh CTR) southwards to M90 Jct 1B, then with the centre-line the A900 across the Forth Road Bridge to M90 Jct 1, then with the centre-line M90 to a point at which it joins the Edinburgh ATZ.
- 295 FARNBOROUGH** Warnings: Amend D133 to D133B.
- 298 FARNBOROUGH** Amend Danger Area, D133/1•2 to D133B/1•2.
- 309 FOWLMERE** Com/Nav: Amend 135•700 to, 135•705.
- 336 HAWARDEN** VRPs: add
- |                         |              |               |
|-------------------------|--------------|---------------|
| Borras Quarry           | 163°/20•5 nm | 173°M/6•7 nm  |
| Chester                 | 140°/15•8 nm | 080°M/5•0 nm  |
| Point of Ayr Lighthouse | 254°/7•1 nm  | 312°M/16•3 nm |
- Delete VRP Wrexham Industrial Estate.
- 348 HUMBERSIDE INTL AIRPORT** Remarks: Add, Visiting pilots are required to carry photographic ID.

- 354 INVERNESS** Op hrs: Amend to, Winter Sun-Mon 0630-2130, Tue-Fri 0245-2130, Sat 0245-2100. Summer Sun-Mon 0630-2215, Tue-Sat 0245-2215.  
Landing Fees: Amend to £21.01.  
Delete para "Aircraft not subject.....ETA for PPR."  
Delete para "All international flight.....organise a handling agent" and replace with "All operators including executive and GA, must make prior arrangements with a handling agent for ground handling. Charges will apply."  
Amend Dalcross handling frequency to 131\*430.
- 361 ISLE OF SKYE (Broadford)** Com/Nav: Amend to, Maintain a watch and free call on SAFETYCOM 135\*480. To activate the PAPI call 130\*650.
- 362 ISLE OF WIGHT - SANDOWN** Com/Nav: Amend 119\*275 to 119\*280.
- 366 JERSEY** Com/Nav: Freq 120\*455 has reverted back to 120\*450.
- 367 KEMBLE** Declared Distances, add TORAs from Twy intersections as follows:  
Rwy 08 - from intersection with Twy D - TORA 1149.  
Rwy 08 - from intersection with Twy B - TORA 975.  
Rwy 26 - from intersection with Twy A - TORA 1410.  
Rwy 26 - from intersection with Twy B - TORA 636.
- 369 KEMBLE** From the Noise Abatement diagram, remove the Microlight/Helicopter circuit and text.
- 371 KIRKBRIDE** Com/Nav: Amend 124\*400 to 124\*405.
- 372 KIRKWALL** Taxiway W removed between hold W4 and Rwy 14.
- 379 LASHENDEN/Headcorn** Com/Nav: Amend 122\*000 to 122\*210.  
Remarks: Add, All aircraft to contact Headcorn Radio before taxi.
- 381 LEE-ON-SOLENT** Com/Nav: Amend Solent Radar to 120\*230.  
Remarks: Add, Acft approaching Lee-on-Solent AD are encouraged to contact Solent Radar on 120\*230 for ATS prior to contacting Lee Radio.  
**Fleetlands ATZ is to be avoided unless two-way contact is made on 135\*700.**  
Rwy 05 departures - remain W of the disused railway line or S of the solar farm to avoid Fleetlands ATZ. Straight out departures arranged prior to take-off on 135\*700.
- 382 LEE-ON-SOLENT** Add text, **Circuits** - Acft arriving from the North are suggested to join via Wickham VRP (N50 54\*00 W001 11\*25), for a downwind or right base for Rwy 25 remaining outside Fleetlands ATZ. Straight in approach Rwy 23, call 135\*700 for ATZ transit prior to Wickham VRP. Standard overhead joins are available on request with Lee Radio and are dependent on the Warbird circuit (1200ft AAL - RH on Rwy 05 & LH on Rwy 23).
- 385 LEEDS BRADFORD** VRPs Amend Dewsbury (DBY) POL R102° to R101°.
- 388 LEEDS EAST** Runway length for Rwy 16/34 reduced to 1134m. Twy C closed, Holds C, C1 C2 removed. Helipad removed.  
Op Hrs: Amend to,  
01 Apr - 31 Oct 0730-1700, 01 Nov-31 Mar 0830-1630.  
Remarks: Replace, Be aware of Sherburn in Elmet 3 nm to SW with, No overhead joins due to conjoined ATZ with Sherburn in Elmet 3nm to the SW.
- 391/2 LEICESTER** Com/Nav: Amend Leicester Radio 122\*125 to 122\*130.
- 401 LIVERPOOL** Com/Nav: Amend 119\*850 to 119\*855; 126\*350 to 126\*355; 118\*450 to 118\*455; 124\*325 to 124\*330 and 121\*950 to 121\*955.
- 402 LIVERPOOL** Declared distances. add;  
Rwy 27 from intersection with Hold F - TORA 1483 m.  
Remarks: Handling: Add, XLR Executive Jet Centres: Tel 0151 3179325, Mob: 07973 837355, Email: jetcentre@xlrliverpool.com
- 403 LIVERPOOL** Flying within 5 NM of the Liverpool CTR/CTA,  
Amend 119\*850 to 119\*855.
- 409 LONDON CITY** Com/Nav: Amend Thames Director 133\*450 to, 133\*455.
- 411 LONDON GATWICK** Hot Spot 3 added at the start of Rwy 26R. HS3- The take-off distance for Rwy 26R starts at the beginning of the runway indicated by the white painted runway demarcation line marking abeam the 26R TODA sign and this is where you should commence your take-off roll.

- **412 LONDON GATWICK** Com/Nav: Amend 124•225 to 124•230, 121•800 to 121•805, 121•950 to 121•955.
- **418 LONDON LUTON** Hold F1 redesignated J1.
- **426 LONDON DERRY/Eglington** Com/Nav: Amend TWR 134•150 to 134•155 and ATIS 119•375 to 119•380.
- Delete holds A1, A2, D02 and G 08/26. Taxiway A redesignated disused.  
Declared Distances, add TORAs from Twy intersections as follows:  
Rwy 08 - from intersection with Twy E - TORA 1510.  
Rwy 08 - from intersection with Twy D - TORA 1260.  
Rwy 08 - from intersection with Twy B - TORA 804.  
Rwy 26 - from intersection with Twy B - TORA 1151.
- **441 MANCHESTER** Holds NA, N2 & Z1 added. Terminal 2 extended.
- **457 MEASHAM COTTAGE FARM** Com/Nav: Amend East Midlands ATIS to 122•680 and East Midlands APP to 134•180
- **464 NETHERTHORPE** Com/Nav: Amend Doncaster APP/RAD 126•225 to 126•230.
- **481 NORTHAMPTON/Sywell** Rwy 14/32 now licensed and extended.  
Revised declared distances for Rwy 14/32:  

Rwy	Dim(m)	Surface	TORA(m)	LDA(m)
14/32	799x25	Grass	14/32-799	14/32-799
- **490 NORTH RONALDSAY** Rwy 14/32 redesignated 13/31.  
Revised declared distances for Rwy 13/31 & 03/21:  

Rwy	Dim(m)	Surface	TORA(m)	LDA(m)
13/31	304x30	Grass	13/31-304	13/31-304
03/21	331x18	Grass	03-292	03-262
			21-298	21-262
- **491 NORTH WEALD** Hold A4 removed, A5 renamed A4, A6 renamed A5.  
Grass Rwy 02/20, amend width to 25m. Op hrs: Amend to, 0830-1900 or SS if earlier.  
PPR mandatory IAW NATS LOA 2019.  
Customs: Amend to, NW Operations - 4 hrs PNR.
- **492 NORTH WEALD** Remarks: 2nd paragraph amend to Unlicensed aerodrome situated beneath Stansted TMZ 2 (SFC-1500' QNH)  
Stansted CTA 1500'-2500'QNH above TMZ 2.  
Delete bullet point •Squawk 7000 when outbound.....  
Circuits, amend 800 ft aal to read, 1200 ft QNH.  
Contacts: Remove Squadron Fax number.
- **494 NORWICH** WEF 01 May 2019 Op hrs: Amend to, Strictly PPR.  
Mon, Thu, Fri & Sat 0600-2130; Tue 0600-215; Wed 0600-2230; Sun 0600-2300.
- **498 NOTTINGHAM** Com/Nav:  
Amend East Midlands APP 134•175 to East Midlands Radar 134•180.
- **500 OAKSEY PARK** Com/Nav: Amend Oaksey Radio to 132•230.
- **505 OLD BUCKENHAM** Warnings: amend last paragraph to read:-  
Temporary straw stacks up to 30ft tall may be in place 250m from Rwy 25 thld.  
Add new warning, Grass Rwy 07/25 operations must not be simultaneous with asphalt Rwy 07/25 operations.
- **511 OLD WARDEN** Remarks: Amend Standard overhead joins mandatory to read:-  
A standard overhead join must be made at 1800ft AAL.  
Safety: Amend 2nd line to read, All acft to make a full overhead join at 1800 ft AAL to allow any model flying to cease.
- **515 OXFORD** Hold AX removed.
- **537 PRESTWICK** Com/Nav: Amend 121•125 to 121•130, 124•625 to 124•630 and 127•150 to 127•155.
- **546 REDHILL** Restaurant: Amend to read,  
The Pilot's Hub Brasserie & Coffee House. Acclaimed, high quality food and drink.  
FBO & Landing fees. Meeting rooms available. Open 7 days a week from 0800hrs.  
www.pilotshub.co.uk Tel: 020 8652 9027.
- **549 RETFORD/Gamston** Com/Nav: Amend 130•475 to 130•480 & 126•225 to 126•230.

- **555 ST ATHAN** Com/Nav: Amend Twr to 122•865. Add St Athan ATIS 130•560. Hot Spot 1 added. Exercise extreme caution. Complex intersection of taxiways A, D, F & H.
- **561 SALTBY** Com/Nav: Amend East Midlands RAD 134•175 to 134•180.
- **563 SANDTOFT** Com/Nav: Amend Doncaster Radar to 126•230, (also in remarks text).
- **580 SHOREHAM** Com/Nav: Amend (TWR 121•455 When directed by ATC) to 125•405. Holds L4, L5 & L6 redesignated as F1, F2 & M respectively. Twy L South of grass runway 13/31, redesignated as Twy F.
- **590 SOUTHAMPTON** Com/Nav: Amend Solent Radar to 120•230.
- **596 SOUTHEAD** Amend Danger Area D138/13 to D138D/13.
- **604 STORNOWAY** Op hrs: Amend to, Mon-Fri, 0700-1945, Sat 0700-1515, Sun 1230-1730 and by arrangement with HIAL.
- **608 STRATHAVEN** Com/Nav: Amend Prestwick ATIS to 121•130.
- 610 STRUBBY NORTH** Com/Nav: Amend Strubby Radio to, 122•305.
- 611 STURGATE** Landing Fees: Amend to, No landing fees for private GA. Note Commercial and flight school training landing fees may apply. Remarks: Add, Non radio traffic must PPR by telephone. Add Restaurant: Cafe open 1000-1500, Fri-Sun (Winter), Wed-Sun (Summer). Tea & Coffee available from Admin Office Mon-Thu. Fuel: Add times, Available Mon-Fri 100-1630, Sat/Sun 1000-1500. Contact details: Delete telephone number, 838305 Sat & Sun.
- 613 SUMBURGH** Op hrs: Amend to, Mon-Fri, 0730-2015, Sat 0730-1600, Sun 1045-2000. VRPs, Amend Bodum SUM 015°/2•4nm to SUM 014°/2•4nm.
- 616 SWANSEA** Op hrs: Amend to, Strictly PPR by telephone to A/G Tel: 01792 208182. Tue-Sun 0900-1700 or SS whichever is earlier and by arrangement.
- **613 SUMBURGH** Fuel: Amend to, 100LL, Jet A1. North Air Multi Services. No credit card facilities. Contact North Air for payment options, Tel: 01950 460367, Fax: 01950 460182.
- **619 TATENHILL** Com/Nav: Amend 124•075 to 124•080.
- 627 TIREE** Central windsock removed.
- **644 WESTRAY** Starter extensions added to Rwy 13/31 (39m & 46m respectively) Revised runway dimensions and declared distances for Rwy 13/31.
 

Rwy	Dim(m)	Surface	TORA(m)	LDA(m)
13/31	457x30	Grass	13-411	13-372
			31-418	31-372
- 646 WEST WALES/Aberporth** Remarks: Replace EGD202 with EGD202D. Replace paragraph When EGD201H.....West Wales Information on 122•150 with, When EGD 202D is notified 'Active' inbound aircraft are required to call Aberporth Radar on 119•650 or when notified West Wales Radar on 127•090, otherwise call West Wales Information on 122•150.
- 655 WICK** Op hrs: Amend Sun hrs to, 1445-1645.
- **659 WOLVERHAMPTON/Halfpenny Green** Asphalt Rwy 10/28 withdrawn from service.
- 662 WOODLANDS/Roche** Solar farm added to graphic NE of runways.
- **670 YEOVIL/Westland** Com/Nav: Amend 130•800 to 130•805, 125•400 to 125•405 and 119•050 to 191•055. Remarks: Operator, amend to, Leonardo Helicopters (UK).

## **LOW LEVEL CROSS-CHANNEL OPS BETWEEN THE UK & FRANCE/BELGIUM**

- **676 Para 4.1** Amend to read:-  
In United Kingdom Airspace a bi-directional Recommended VFR Route between the Solent CTA and the Channel Islands CTR routing towards the Cherbourg Peninsula is established (See AIP AD 2-EGJJ-3-1) which routes through EG D036. A DACS for EG D036 is available subject to hazardous activity and it is strongly recommended, in accordance with ENR 5.1-7, that a positive clearance is obtained from 'Plymouth Military Radar' or 'London Information' prior to entering EG D036. All traffic using the route above 3,000 ft amsl are advised to maintain the appropriate level irrespective of the flight rules being observed. Pilots flying above 3,000 ft amsl are reminded of the requirement to maintain an appropriate semi-circular level whilst within the French FIR.

### **HELIPORTS**

- **794 Manston Heli Base** Now closed. New chart for Manston Helipad operated by Polar Helicopters. New chart available via the Pooleys Website.
- **799 SILVERSTONE HELIPORT** Com/Nav: Amend 121·075 to 121·080.

### **HELICOPTER ROUTES IN THE LONDON CTR AND LONDON CITY CTR**

- **809** Amend Danger Area D133/1·2 to D133B/1·2.

### **GLIDER LAUNCHING SITES**

- **820** Aylesbury/Thame - Site withdrawn.

### **RAF 2 FLYING TRAINING SCHOOL MIL VOLUNTEER GLIDING SQNS**

- **823** RAF Kirknewton, amend Edinburgh APP to 121·205.



# EGKB

N51 19:85 E000 01:95

**BIGGIN HILL**

599 ft AMSL

5.5 nm ESE of Croydon

DET 117:30 278 21.2. OCK 115:30 087 18.1

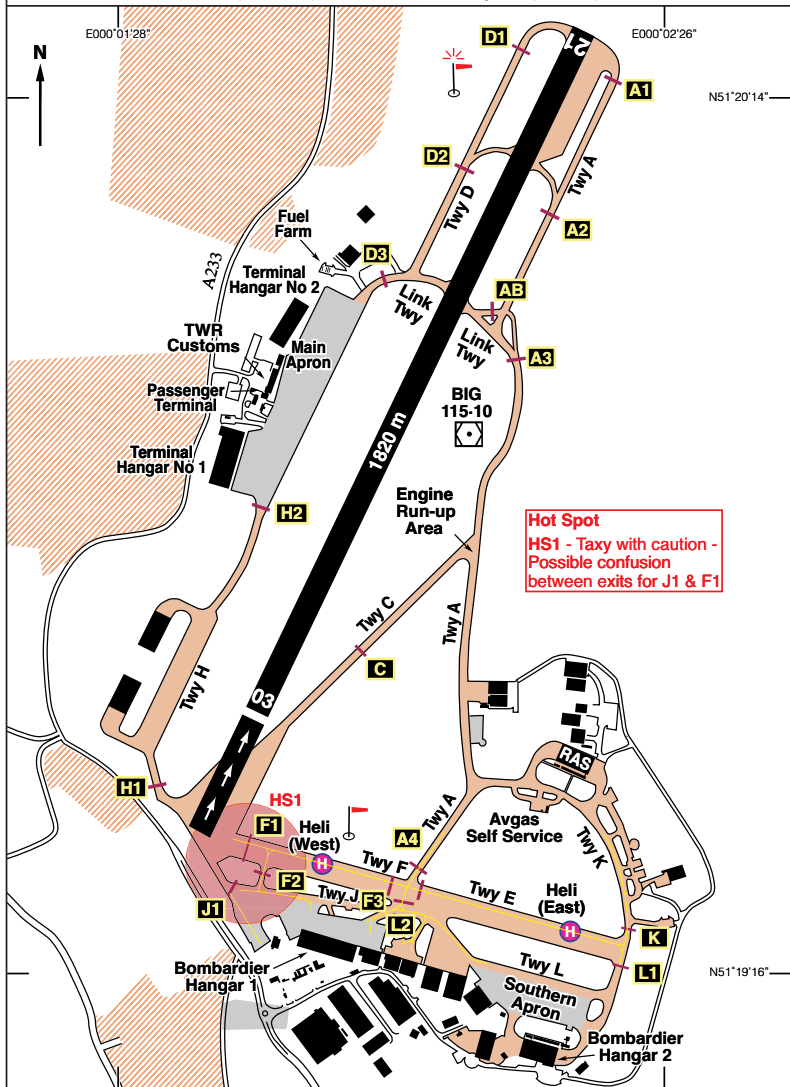
12 nm SE of London

LON 113:60 119 20.9

c/s Biggin. APP 129-405. TWR 134-805. VDF 129-405, 134-805. ATIS 135-680.

Thames Director 132-700, 133-455, 128-025.

VOR/DME 'BIG' 115-10 (On A/D). ILS /DME Rwy 21 (207°M) I-BGH 109-35.



Changes: Additions: Hot Spot 1; Taxiways F & E; Heli East & West.

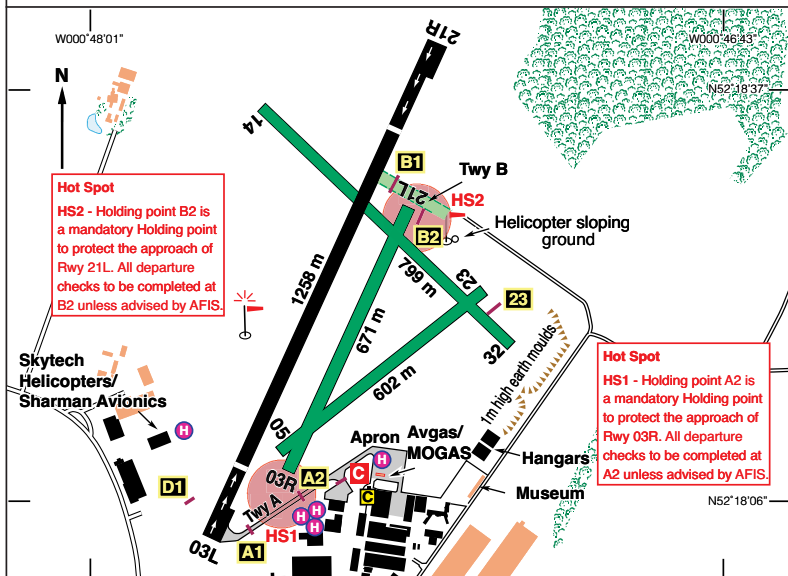
## EGKB

N51 19-85 E000 01-95		<b>BIGGIN HILL</b>			599 ft AMSL
Rwy	Dim(m)	Surface	TORA(m)	LDA(m)	Lighting
03/21	1820x45	Asphalt	03-1778 21-1670	03-1555 21-1670	Thr Rwy PAPI 4° Ap Thr Rwy PAPI 3°
<b>Op hrs:</b> Strictly PPR. Mon-Fri 0630-2300, Sat, Sun, & PHs 0800-2200. O/T c.					
<b>Landing Fee:</b> Up to 800 kg £21.10; 801–1700 kg £25.20; 1701–2500 kg £43.50; 2501–3500 kg £62.60. + VAT Helicopters minimum £43.50 + VAT. Out of hours, Handling, Apron, International and other charges on application.					
<b>Parking:</b> First 2 hrs free, then per day: Up to 800 kg £9.35; 801-1700 kg £11.85; 1701-2500 kg £15.80; 2501-3500 £24.70. + VAT.					
<b>Customs:</b> As Op hrs, Tel: 01959 578527. UK GAR (General Aviation Report) required prior to international arrivals.					
<b>Hangarage &amp; Maintenance:</b> Biggin Hill Operations Tel: 01959 578525.					
<p><b>Remarks:</b> Operated by Biggin Hill Airport Ltd., Biggin Hill Airport, Kent. TN16 3BH. Not available to non-radio aircraft. Microlight flying is prohibited at this airport. Noise Preferential Routings applicable to jet and turbine aircraft available on request. Due to the close proximity of residential areas, the running of APUs on the West Apron is limited to a maximum of 20 minutes. PPR via <a href="http://www.bigginhillairport.com">www.bigginhillairport.com</a> (General Aviation Tab) or at <a href="http://www.Bigginbooking.com">www.Bigginbooking.com</a>. All personnel are to wear hi-visibility clothing while operating on the aprons.</p>					
<b>Circuit Procedures</b>					
Circuits LH on 03; RH on 21. Circuit height 1000 ft QFE, 1600 ft QNH. Aircraft taking-off, 'going around' or making 'touch and go' landings are to remain at or below 500 ft QFE until the upwind end of the runway has been passed, when a left or right turn (as appropriate) should be initiated. Aircraft joining the circuit for landing are to fly across the mid-point of the runway in use at 1000 ft QFE at 90° to the runway heading, a left or right turn (as appropriate) should be made onto the downwind leg.					
<b>Aircraft Handling :</b> Biggin Hill Executive Aircraft Handling Tel. 01959 578552. Biggin Hill Ops 130-025.					
<b>VFR Departure Routes</b> – See next page and page 128.					
<b>Note:</b> ATZ extended to cover Rwy 21 IFR Noise Preferential departures.					
<b>Helicopter Operations:</b>					
Helicopter Arrivals – Follow the fixed wing circuit pattern unless otherwise as directed by ATC.					
Helicopter Departures – As instructed by ATC.					
General – Avoid overflying Biggin Hill village to the South, Downe village on the NE boundary and the residential area on the NW boundary.					
<b>Warnings:</b> Windshear and turbulence may be experienced on short final to Rwy 03 when wind from the NW.					
Departing aircraft beware of other aircraft joining the visual circuit from the 'Deadside'.					
<b>Restaurant:</b> Restaurant and Refreshments always available.					
<b>Fuel:</b> 100LL, Jet A1. Most Debit Cards, also, Visa, Diners, Mastercard, Amex and Multi-Service.			<b>Tel:</b> 01959 578525 ATC/Ops/Fuel 01959 578500 Admin. <b>Fax:</b> 01959 576404 Ops <b>Email:</b> <a href="mailto:enquiries@bigginhillairport.com">enquiries@bigginhillairport.com</a> <b>Website:</b> <a href="http://www.bigginhillairport.com">www.bigginhillairport.com</a>		

# EGBK

N52 18-37 W000 47-53 **NORTHAMPTON/Sywell** 424 ft AMSL  
 5 nm NE of Northampton. **DTY 116-40 060 14. HON 113-65 098 32-1**

**c/s Sywell Information. 122-705. AFIS.**



**Hot Spot**  
 HS2 - Holding point B2 is a mandatory Holding point to protect the approach of Rwy 21L. All departure checks to be completed at B2 unless advised by AFIS.

**Hot Spot**  
 HS1 - Holding point A2 is a mandatory Holding point to protect the approach of Rwy 03R. All departure checks to be completed at A2 unless advised by AFIS.

Rwy	Dim(m)	Surface	TORA(m)	LDA(m)	Lighting
03L/21R	1258x30	Concrete	03L-1199 21R-1100	03L-1000 21R-1000	Thr Rwy APAPI 3-5° Thr Rwy APAPI 3-5°
03R/21L	671x30	Grass	03R/21L-671	03R/21L-671	Nil
05/23	602x30	Grass	05/23-602	05/23-602	Nil
14/32	799x25	Grass	14/32-799	14/32-799	Nil
IBn 'NN' Gn					

**Op hrs:** Strictly PPR by telephone only - 01604 801630. SUMMER 0800-1700 UTC. WINTER 0900-1800 UTC.

**Landing Fee:** Microlights £12.00. Single Engine piston £16.50. Twins on request. Prices VAT inc.

**Hangarage:** Ltd on request. **Maintenance:** Available. **Customs:** PNR.

**Remarks:** Operated by Sywell Aviation Ltd, Sywell, Northampton NN6 0BT. PPR.  
 All visiting helicopters to Sloane Helicopters are strictly PPR through Tel: 01604 790595. This number is strictly for helicopters visiting Sloane - NO other aircraft. PPR should also be obtained from AFIS.  
 Fixed-wing circuits at 1000 ft QFE; LH on 03, 14 & 23, RH on 05 and 21 & 32.  
 Helicopter circuits at 800 ft QFE in opposite direction to fixed-wing.

*Continued*

**Remarks (continued):**

Fixed-wing join is via the overhead not below 1500 ft QFE, helicopters operate deadside up to 800 ft QFE. Other joins subject to traffic.

No overhead or crosswind joins for Helicopters. Helicopters to land in the central grassed area avoiding active runways.

Visiting helicopters are to join via Heli East, West or Northeast (See noise abatement procedures).

Departure checks to be completed at Hold A2 (Rwy 03) or at Hold B2 (Rwy 21).

Parallel use of Rwys 03/21 not permitted. When Rwys 03/21 in use, pilots to advise AFIS of intention to use hard or grass runways.

When grass runways unusable, expect lengthy backtracking of Rwy 03L/21R.

No apron markings, all parking at pilot's discretion.

Start up and taxi clearance must be received from AFIS.

Helicopters requiring AVGAS should park on the circled 'H' at the fuel apron adjacent to the fuel pumps.

Noise Abatement Chart - see opposite.

**Warnings:**

All runways have non-standard white centre-line markings.

Aerobatics take place through out the year, 3 nm radius ARP, up to 5000 ft agl.

No movements permitted during displays.

A Small Arms Range (.22 Rifle and Clay Pigeon) is located approx 1000 m NNW of the ARP between the approaches to Rwy 15 and 21.

Intense bird activity at times, mainly Gulls and Corvids.

**Restaurant:** Restaurant, Refreshments and Hotel (54 bedrooms), with aircraft parking adjacent. Full conference facilities available.

'Pilots Mess' Cafe adjacent to the tower.

**Taxi:** Available on request.

**Fuel:** 100LL, MOGAS, Jet A1.  
 Visa, Mastercard, Switch and Delta

**Tel:** 01604 801630 AFIS PPR  
 01604 801621 Admin  
 01604 642111 Hotel

**Fax:** 01604 499210 AFIS

**Email:** sywellfis@btconnect.com (AFIS)

**Website:** www.sywellaerodrome.co.uk



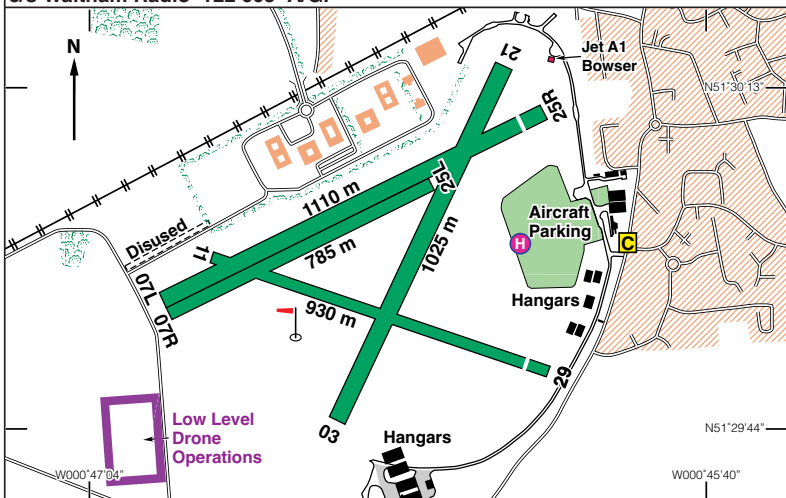
# EGLM

N51 30:04 W000 46:49 **WHITE WALTHAM** 127 ft AMSL

2 nm SW of Maidenhead. CPT 114:35 091 16:6. BNN 113:75 215 15.9

LON 113:60 277 11:5. WOD 352:0 056 4:9

c/s Waltham Radio 122-605 A/G.



Rwy	Dim(m)	Surface	TORA(m)	LDA(m)	Lighting
03/21	1025x45	Grass	03-1025 21-1025	03-1025 21-1025	Nil Nil
07L/25R	1110x45	Grass	07-1110 25-1110	07-1110 25-1045	Nil Nil
07R/25L	785x25	Grass	07-1110 25-1110	07-1110 25-1045	Nil Nil
11/29	930x30	Grass	11-930 29-930	11-930 29-867	Nil Nil

**Op hrs:** All acft are required to phone for PPR. 0800-1630 (0700-1830); or SS+30 whichever is earlier. OT by arrangement.

**Landing Fee:** Flexwing £7; Private: SE £15; Twin £18; Commercial: Single/Twin £28.

**Parking:** Overnight Single £15; Twin £18. Helicopters £28. All Inc VAT.

**Maintenance :** Available. **Hangarage:** Limited. **Customs:** 4 hrs PNR.

**Remarks:** Operated by White Waltham Airfield Ltd. Non-radio aircraft only permitted by prior arrangement. Grass runways, may be rough/undulating, are marked with chalk centre lines and runway designators. Join overhead at 1200 ft QFE. Circuits at 800 ft QFE, variable direction. Reporting Points are shown on the Chart overleaf. No overhead departures. Noise Abatement and Circuits - See pages 653 & 654. Use of transponders is mandatory for suitably equipped acft. No taxiways, vacate runway when able. Visitors parking in front of the club house. **Helicopters** should arrive/depart low level avoiding fixed wing circuits and built up areas. Parking is to the West of the fixed wing parking area, unless by prior arrangement.

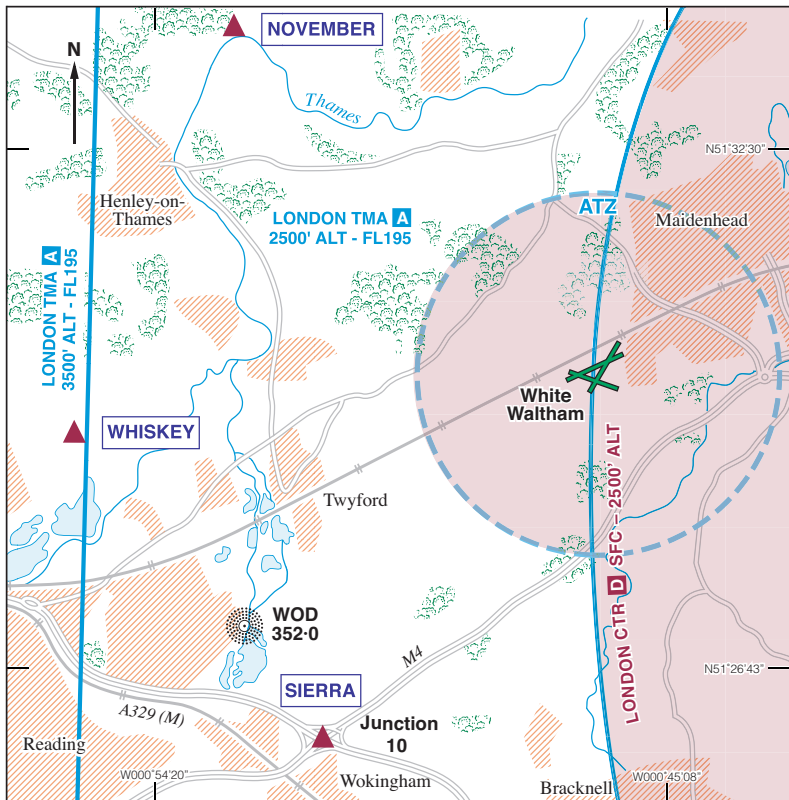
**Caution:** Vehicles use the perimeter track which bounds manoeuvring area to the North and East of the AD. Public road runs NE/SW 140 m from Thld Rwy 29.

**Restaurant:** Licensed restaurant and Club facilities available. Tel: 01628 823799.

**Fuel:** 100LL, UL91, Jet A1. **Tel:** 01628 823272. **Website:** www.wlac.co.uk

Changes: Rwy 07R/25L added. Drone operations area added.

# WHITE WALTHAM AREA CHART



White Waltham Local Flying Area (LFA) is defined as that portion of the ATZ contained within the London CTR. VFR Flights within the LFA may take place without compliance with IFR requirements subject to the following conditions:

1. Aircraft to remain below cloud and in sight of the ground.
2. Maximum altitudes: 1500 ft QNH, provided that aircraft can remain at least 500 ft below cloud; otherwise 1000 ft QNH.
3. Minimum flight visibility 3 km.

**Note.** Pilots of aircraft flying in the local flying area are responsible for providing their own separation from other traffic operating in the relevant airspace. SVFR flights are required to be separated by Heathrow Radar.

Inbound aircraft are to report their position and altitude in relation to one of the following Reporting Points:

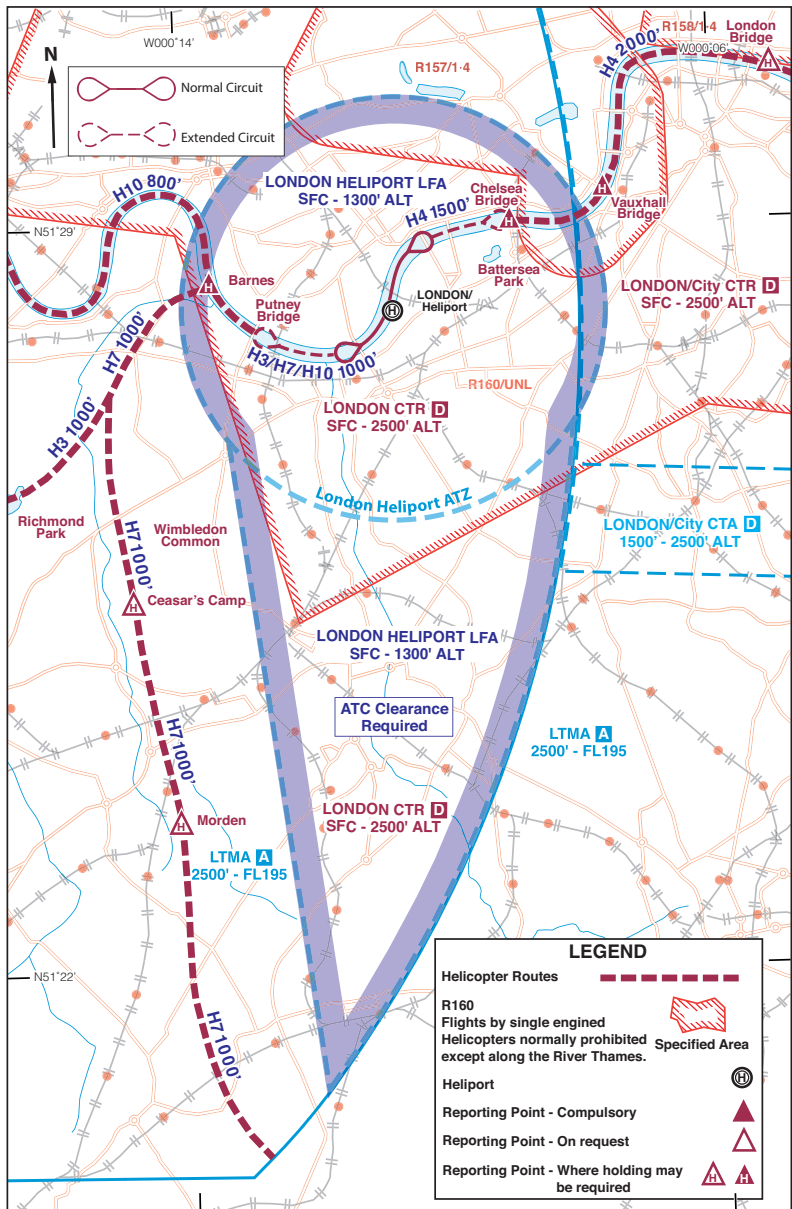
From North — **NOVEMBER** — bend in river north of HENLEY.

From West — **WHISKEY** — North of lakes East of READING.

From South — **SIERRA** — Motorway junction north of WOKINGHAM (Junction 10 M4).

Users of the AD should be familiar with the WLAC operation manual available via the AD or club website [www.wlac.co.uk](http://www.wlac.co.uk)

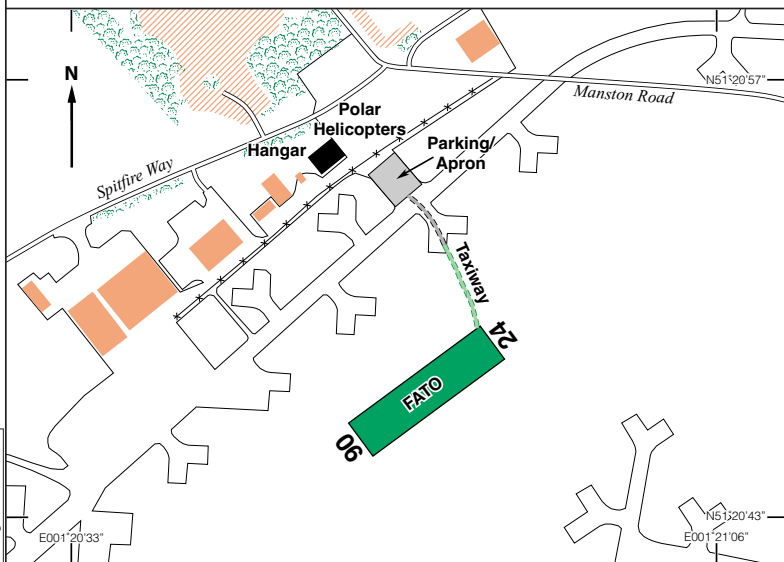
# LONDON HELIPORT INBOUND/OUTBOUND/LOCAL FLYING AREA



N51 20.78 E001 20.84 **MANSTON HELI PAD** 150 ft AMSL

North of mid point of Manston Disused Runway.

**Manston Radio 119.930.**



FATO	Dim(m)	Surface	Lighting
24/06	160 x 40 m	Grass	Nil.

**Op hrs:** PPR , Mon- Fri 0900-1700. Mon-Sun. Out of hours available on request.

**Landing Fee:** £12 Plus VAT. **Customs:** By arrangement.

**Hangarage:** Limited, available on request. **Maintenance:** Nil.

**Remarks:** Operated by Polar Helicopters Ltd, Hangar 10, Manston Airport, Manston, Kent, CT12 5FF. Arrival strictly by PPR only.

Grass FATO 24/06 160 x 40 m situated 300 m to the North of mid point of Manston disused runway.

All landings & departures will be from the FATO.

Circuits at 1000 ft QFE, 06 LH and 24 RH.

**For arrival/departure information, contact Polar Helicopters.**

**Warnings:** Hard runways or taxiways not to be used for any aircraft movement, including take-off/landing.

**Restaurant:** Local cafe and museum within a 5 minute walk.

**Fuel:** Jet-A1, 100LL.  
MasterCard/Visa/Maestro.

**Tel:** 01843 823067  
**Email:** info@polarhelicopters.co.uk  
**Website:** www.polarhelicopters.co.uk