

# EGCN

N53 28'52" W001 00'25" **DONCASTER SHEFFIELD (Robin Hood)** 55 ft AMSL

3 nm SE of Doncaster.

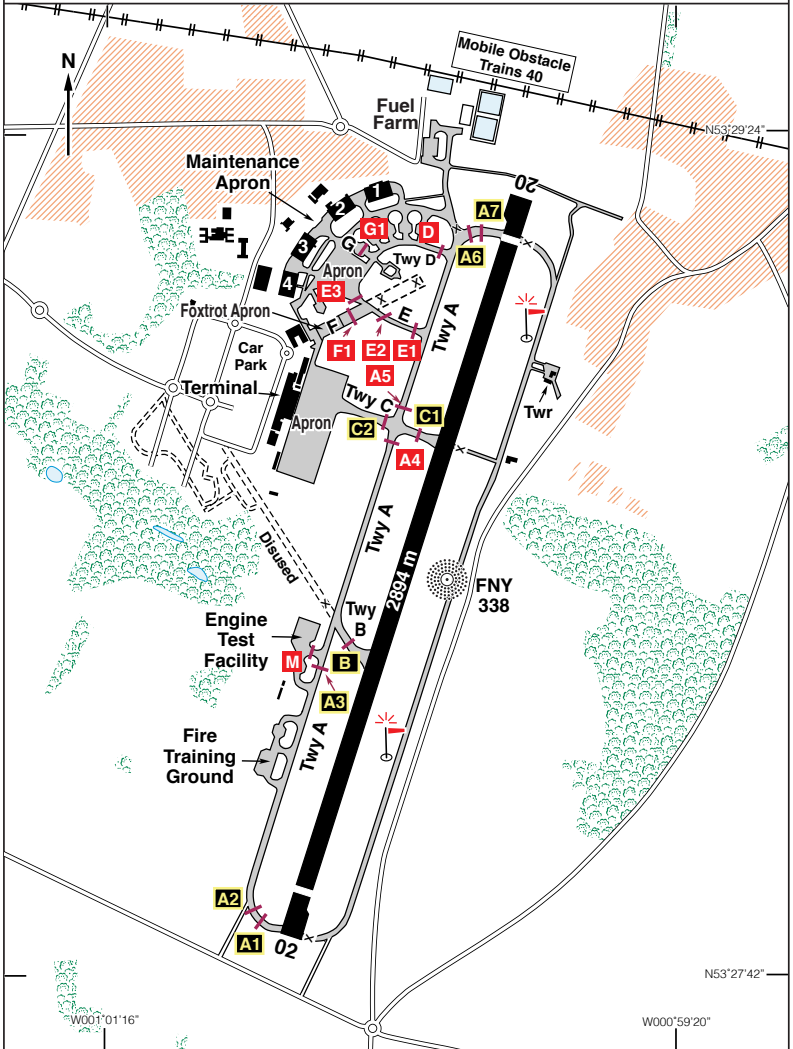
GAM 112·80 353 11·8

OTR 113·90 251 34·8

c/s Doncaster APP 126·225. TWR 128·775. RAD 126·225, 129·055.

ATIS 134·955. NDB 'FNY' 338·0 (on A/D). VOR/DME 'GAM' 112·80.

ILS/DME Rwy 02 (020°M) 'I FIN' 110·95. ILS/DME Rwy 20 (200°M) 'I FNL' 110·95





## DONCASTER SHEFFIELD (Robin Hood) ENTRY/EXIT LANES and VISUAL REFERENCE POINTS (VRPs)

### Entry/Exit Lanes

To permit aircraft to operate to/from Doncaster Sheffield Airport in IMC, but not under IFR, the M18 North/South (Stainforth), Haxey East/West (Haxey), M18 West/East (Wadworth) and the A1M North/South (Clumber) Entry/Exit lanes (all 2 nm wide) have been established for use, subject to the following conditions:

- (a) Use of the lanes is subject to clearance being obtained from Doncaster Sheffield ATC irrespective of prevailing weather conditions;
- (b) Aircraft using the lanes must remain clear of cloud and in sight of the surface, not above 2000 ft (Doncaster Sheffield QNH) and in a flight visibility of not less than 3 km;
- (c) An aircraft using a lane shall keep the centre-line on its left, unless otherwise instructed by ATC;
- (d) Pilots of aircraft are responsible for maintaining adequate clearance from the ground or other obstacles. Additionally, flights operating under VFR may be required to follow these routes.

VRP	VOR/DME
<b>Goole Docks</b> N53 41·82 W000 52·67	GAM R007°/25 nm
<b>M18 Stainforth Services</b> N53 35·48 W000 59·25	GAM R357°/19 nm
<b>Haxey</b> N53 29·42 W000 50·62	GAM R017°/13 nm
<b>A1/M18 Wadworth Interchange</b> N53 28·75 W001 08·90	GAM R330°/14 nm
<b>Gainsborough</b> N53 23·57 W000 46·25	GAM R044°/9 nm
<b>M1/M18 Thurcroft Interchange</b> N53 23·57 W001 16·72	GAM R300°/14 nm
<b>A1/A57 Clumber Interchange</b> N53 17·78 W001 01·93	GAM R287°/3 nm
<b>Daneshill Lakes</b> N53 21·62 W000 56·12	GAM R006°/5 nm
<b>Thorsby Lake</b> N53 13·63 W001 03·33	GAM R231°/5 nm

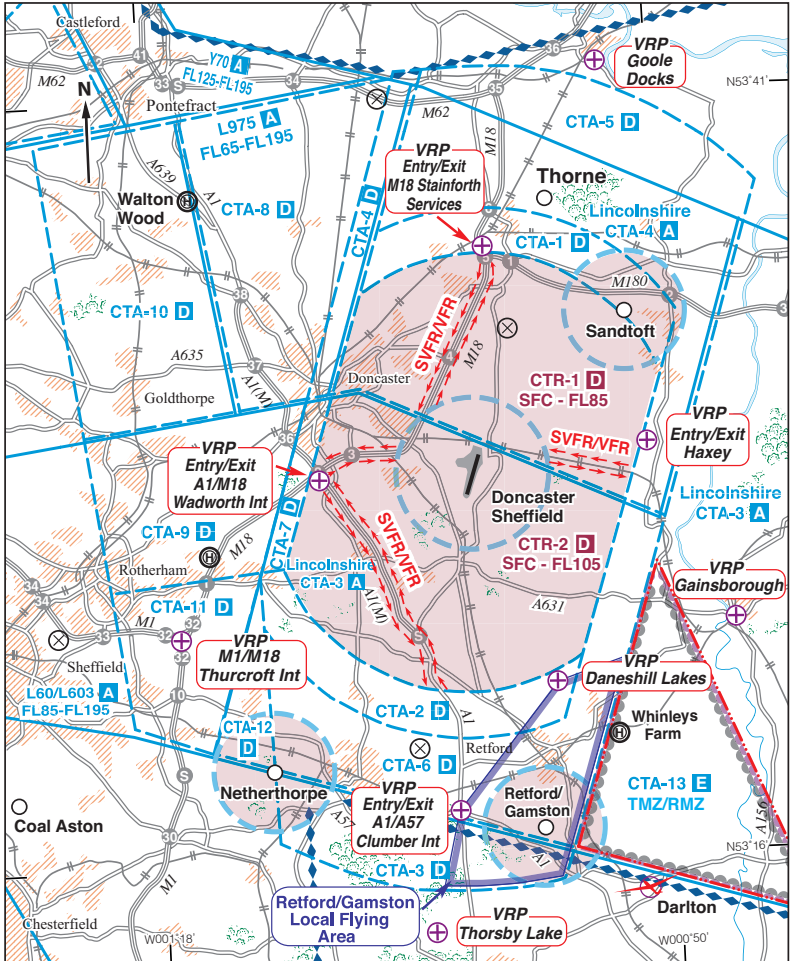
### TRANSPONDER MANDATORY ZONE & RADIO MANDATORY ZONE (TMZ/RMZ)

For flight within the TMZ/RMZ (CTA 13) acft commanders must comply with the following:

- a) Establish satisfactory 2 way RTF communications and pass pertinent flight details to Doncaster Radar 126·225 prior to entering the TMZ/RMZ.
- b) Display the Doncaster Frequency Monitoring code 6170 with Mode C.
- c) Access to the TMZ/RMZ without a radio is at the discretion of Liverpool ATC. Non radio acft should contact 0151 9071542 or email radar@ATCSL.aero prior commencing any planned flight that will enter or cross the TMZ/RMZ.
- d) Conduct flight in accordance with valid letter of agreement with Liverpool ATC.

**Note: CTA 13 is notified as Class E airspace.**

# DONCASTER SHEFFIELD (Robin Hood) CTR/CTA and VRPs



## Doncaster Sheffield Airspace

CTA - 1 D 1500'ALT - FL85	CTA - 9 D 4000'ALT - FL85
CTA - 2 D 1500'ALT - FL105	CTA - 10 D 4500'ALT - FL55
CTA - 3 D 2000'ALT - FL60	CTA - 11 D FL60 - FL85
CTA - 4 D 2000'ALT - FL65	CTA - 12 D FL60 - FL105
CTA - 5 D 2000'ALT - FL85	CTA - 13 E FL85 - FL105 (TMZ/RMZ)
CTA - 6 D 2000'ALT - FL105	
CTA - 7 D 2000'ALT - FL105	Lincolnshire CTA
CTA - 8 D 4000'ALT - FL65	CTA - 3 A FL105 - FL195
	CTA - 4 A FL85 - FL195