

# EGNV

N54 30.55 W001 25.77 **TEESSIDE INTERNATIONAL AIRPORT** 120ft AMSL

4.7 nm SE of Darlington.

**POL 112-10 031 51-7**

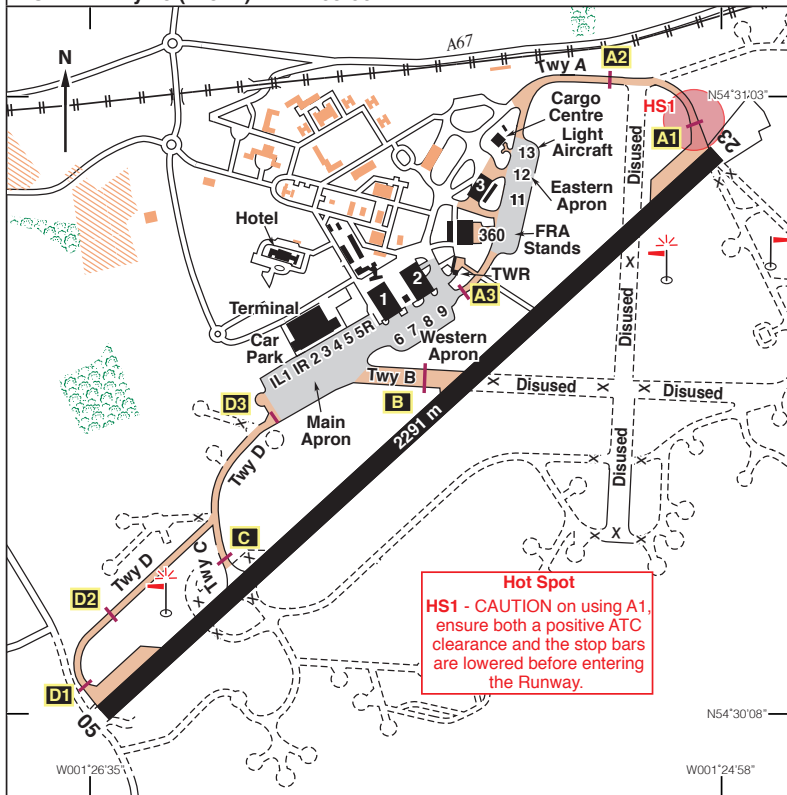
**c/s Teesside APP 118-855. TWR 119-805. RAD 118-855, 128-855. ATIS 132-380.**

**VDF 118-855, 119-805, 128-855.**

**NDB 'TD' 347.5 (230°M/3.93 nm to Thr 23).**

**ILS/DME Rwy 05 (048°M) I-TSE 108-50.**

**ILS/DME Rwy 23 (228°M) I-TD 108-50.**



Rwy	Dim(m)	Surface	TORA(m)	LDA(m)	Lighting
05/23	2291x45	Asphalt	05-2291† 23-2291	05-2291 23-2291	Ap Thr Rwy RCL PAPI 3° Ap Thr Rwy RCL PAPI 3° RHS
† Take-off from intersection with Hold C - TORA 1770 m.					

**Op hrs:** 0600-2200. Extensions by arrangement - Duty Officer, Tel: 01325 331008.

**Landing Fee:** MTOW up to 3 tonnes £8.33 per 0.5 tonne or part thereof + VAT.

**Parking:** First 2 hrs free, then £2.28 per tonnes, per 24 hrs or part thereof.

**Hangarage:** Available. **Maintenance:** Available. **Customs:** Available.

*Continued*

**EGNV****N54 30.55 W001 25.77    TEESIDE INTERNATIONAL AIRPORT    120ft AMSL****Remarks:** Operated by Teesside International Airport Ltd (DTVA), Darlington, Co Durham DL2 1LU.

Flights within Teesside CTR/CTA are subject to the regulations applicable to Class 'D' Controlled Airspace.

Aerodrome not available to non-radio aircraft.

VRPs are listed below. See CTR/CTA and VRPs Chart opposite.

Training flights by prior permission via Duty Officer 01325 331008.

High visibility jackets required whilst on aprons and movement areas.

**Circuits:** Large aircraft at minimum 1500ft aal, light aircraft at 1000ft aal, direction variable.

Aircraft are to avoid overflying the villages of Middleton St George, Middleton One Row, Yarm and Eaglescliffe whenever practicable.

Aircraft must carry third party liability insurance cover of at least £500,000.

Booking out details will not be accepted over the RTF.

All taxiways apart from Alpha (10.5m) and Bravo (central taxiway 35m) are 15m wide. Aircraft requiring greater width must enter or vacate Rwy 05/23 via Twy B.

Hold C closed during Low Visibility Procedures.

Access to Rwy 05/23 restricted to routeing via Holding Points A1, B, C and D1.

Mandatory handling and PPR for all visiting aircraft. Handling Agents:

Swissport Tel: 01325 333125 and Consort Aviation Tel: 0330 4407700.

**Warning:** Deer hazard, please report any sightings to ATC.

Bird concentration may be present on surrounding agricultural land.

Free-fall parachuting from up to FL150 normally during daylight hours.

Model aircraft flying takes place at Redmarshall, 3.7nm NE of Teesside AD from 0930-SS.

Aircraft will remain within 500m of the site not above 400ft AGL. ATC will advise when aircraft between 7kg and 20kg are operating.

**Accommodation:** Hotels on Airport.**Restaurant:** In Terminal and Flying Clubs.**Car Hire:** Avis 01325 332091. Hertz 01325 332600. Europcar 01325 333329.**Taxis:** On airport Taxi Rank or via Information Desk.**VRPs:**

<b>Hartlepool</b>	N54 41.00 W001 12.83
<b>Motorway Junction A1(M)/A66(M)</b>	N54 30.00 W001 37.60
<b>Northallerton</b>	N54 20.33 W001 25.92
<b>Redcar Racecourse</b>	N54 36.43 W001 03.85
<b>Sedgefield Racecourse</b>	N54 38.75 W001 28.10
<b>Stokesley</b>	N54 28.18 W001 11.68

**Fuel:** 100LL, Jet A1.  
Multi Service.**Tel:** 08712 242426.**Fax:** 01325 332810.**Website:** www.teessideinternational.com

# TEESSIDE INTERNATIONAL AIRPORT CTR/CTA and VRPs

