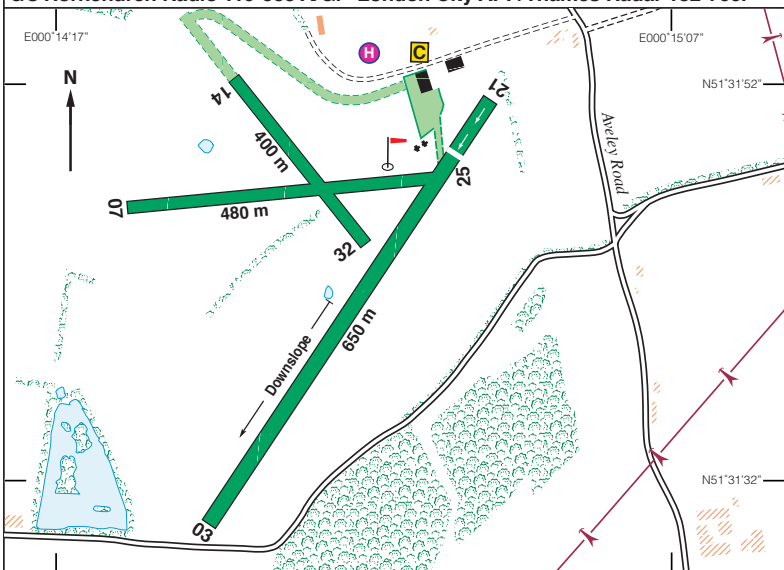


N51 31.72 E000 14.73	DAMYN'S HALL	56ft AMSL
2 nm South of Upminster.	LAM 115-60 156 7-9. BIG 115-10 036 14-3	
c/s Hornchurch Radio 119-555 A/G. London City APP/Thames Radar 132-700.		



Rwy	Dim(m)	Surface	TORA(m)	LDA(m)	Lighting
03/21	650x25	Grass	Unlicensed		Nil
07/25	480x25	Grass	Unlicensed		Nil
14/32	400x25	Grass	Unlicensed		Nil

Op hrs: PPR. 0900-SS daily. PPR via www.damynshall.co.uk/flying_in/ppr

Landing Fee: Based acft free, acft over 50 years old free, other fixed wing & gyros £10, helis £120.

Hangarage: Available. **Maintenance:** Nil. **Customs:** PNR.

Remarks: Operated by Damyns Hall Aerodrome Ltd., Aveley Road, Nr Hornchurch, Essex RM14 2TN. PPR. Aerodrome situated 0.8 nm East of London City CTA, Class D Airspace, base 1500ft ALT and 2.3nm East of London City CTR, Class D Airspace. There is no requirement to call London City APP/Thames Radar providing pilots stay clear of its airspace. Fixed wing aircraft straight in approaches or standard overhead join at 1400ft QNH not below 1000ft overhead the AD due to wing walking display and practice. Helicopter operations - see page opposite. **Circuits:** RH on 03, LH on 21. 07/25 & 14/32 to the South. Fixed wing at 1000ft QNH; Helicopters at 750ft QNH.

Warning: Do **NOT** to enter London City CTA without the appropriate clearance from Thames Radar or Heathrow Radar. Note: There is no training unless agreed with the aerodrome mgr.

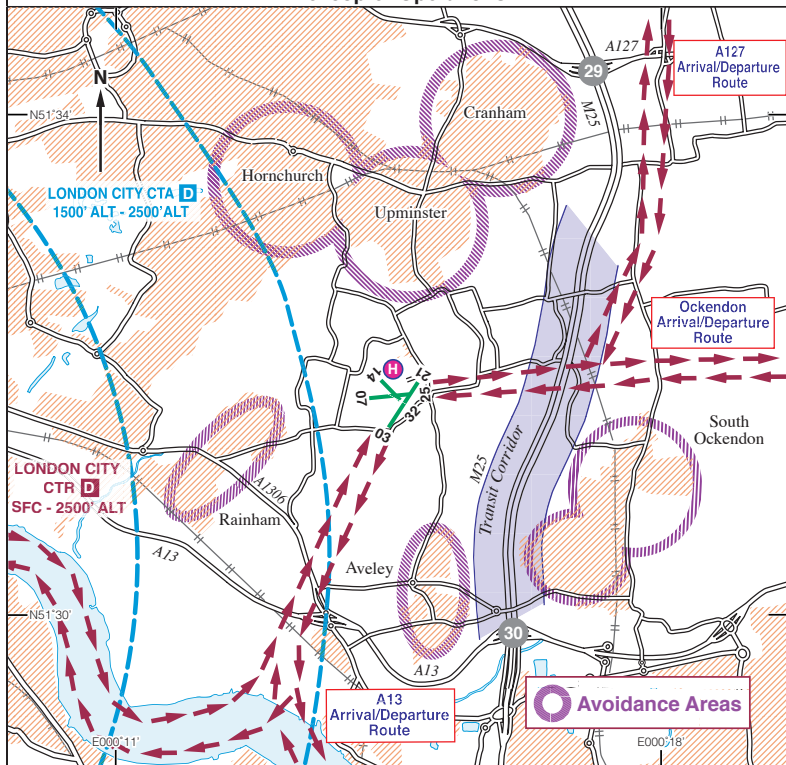
Caution: Pylon power cables, 259ft, 0-7 nm to NE.

A/G Radio 119-555 is not often manned so if no reply make blind calls to Hornchurch Traffic.

Noise Abatement: Avoid over flying all the local villages and built up area to north.

Fuel: 100LL. All major cards except American Express.	Mob: 07886 430686 Email: hugo@skymax.co.uk Website: www.damynshall.co.uk
---	--

DAMYNS HALL Helicopter Operations



Helicopter Movements

Helicopter Pilots should follow the routes shown above unless required to conform to the Damyns Hall fixed wing circuit pattern. Please avoid over flying the Noise Sensitive Areas and houses on approaches to Rwy 14 & 21.

Arrivals/Departures to the North: Pilots should use the A127 Arrival/Departure Route operating at 750ft QNH and make approach to the intersection.

Arrivals/Departures to the East: Pilots should use Ockendon Arrival/Departure Route operating at 750ft QNH and make approach to the intersection.

Arrivals from the South: Pilots should follow The River Thames, use the A13 Arrival/Departure Route operating at 750ft QNH.

Departures to the South: Pilots should use the A13 Arrival/Departure Route, maintain 750ft QNH until clear of fixed wing circuit and track the River Thames until clear to the South.

Transit Traffic: Transit via the M25 transit corridor at 1500 ft QNH.