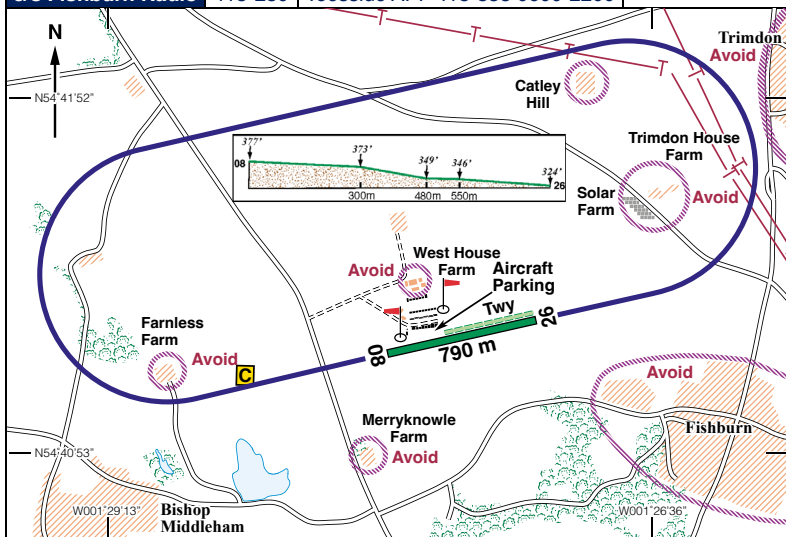


N54 41.30 W001 27.85 **FISHBURN** 377ft AMSL

2.3 nm NNW of Sedgfield, Co. Durham. **POL 112-10 024 60-9**

2.5 nm N of Sedgfield Racecourse. ///demotion.politics.venues

c/s Fishburn Radio 118•280 **Teesside APP** 118•855 0600-2200



Rwy	Dim(m)	Surface	TORA(m)	LDA(m)	Lighting
-----	--------	---------	---------	--------	----------

08/26	790 x 30	Grass	Unlicensed		Nil
-------	----------	-------	------------	--	-----

Op hrs: 0800-2030 Summer. Dawn til dusk Winter.

Landing Fee: Singles £5.00, Twins £10.00. **Customs:** PNR.

Hangarage: Limited. **Maintenance:** Nil.

Remarks: Unlicensed airfield operated by Fishburn Airfield Ltd. Non-radio visiting aircraft must obtain PPR.

Airfield situated 3nm from the NNW boundary of Teesside International Airport CTR/CTA. Contact Teesside App 118•855.

Join circuit only from the North. No overhead joins. No deadside.

Circuits at 1000ft aal, LH on 08, RH on 26. Avoid overflying the villages of Trimdon, Fishburn and Bishop Middleham, and the noise sensitive areas shown above.

Caution: Runway has several distinct gradients. High Tension cables run across the approach to Rwy 26 at approx 2 miles out.

Restaurant: Aviator Café 0900-1700 daily, Tel: 0191 3770137.

Accommodation: 2 miles to south of airfield. Camping space available.

Taxi: Sedgfield Taxis Tel: 07858 455974 . Elliots Tel: 01429 881700.

Fuel: 100LL - 0900-1700 daily.
Self service card payment terminal.

Mob: 07877 118280 (Control)
Mob: 07747 795447 (David)
Email: info@fishburnairfield.co.uk
Website: www.fishburnairfield.co.uk