

EGEC (CAL)

N55 26.25 W005 41.28

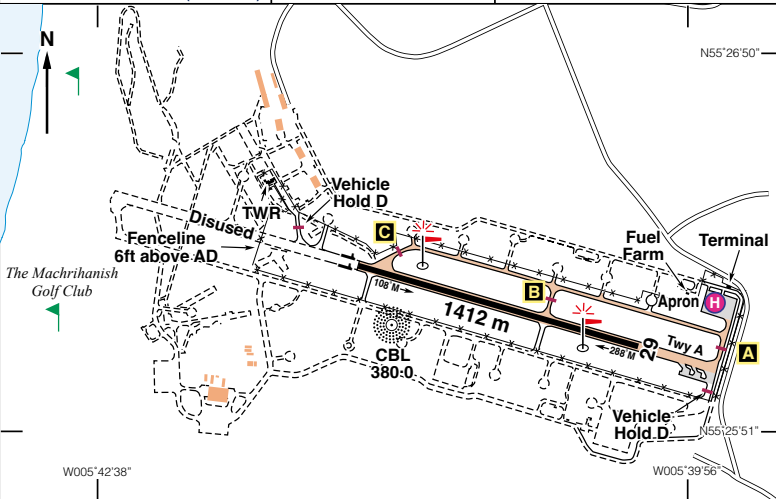
CAMPBELTOWN

42ft AMSL

3 nm WNW of Campbeltown. [vowed.catch.concerts](http://www.vowed.catch.concerts)

c/s Campbeltown Information 125•905 AFIS

NDB 'CBL' 380•0 (On A/D) DME MAC 116•00 H24



Rwy	Dim(m)	Surface	TORA(m)	LDA(m)	Lighting
11/29	1412x30	Concrete/ Asphalt	11-1412 29-1412	11-1412 29-1412	† Thr Rwy APAPI 3° † Thr Rwy APAPI 3.5°

† Thr and Rwy portable electric during night hours only.

Op hrs: PPR. Mon-Fri 0820-1740. Sun (May - Sep) 1650-1800.
And by arrangement with AD operator (HIAL).

Landing Fee: Private light aircraft up to 3000 kg MTWA - £23.32.

Hangarage: Nil.

Maintenance: Nil.

Customs: Nil.

Remarks: Operated by Highlands and Island Airport Ltd., Campbeltown Aerodrome, Campbeltown, Argyll PA28 6NU. All flights PPR. Non-radio aircraft not accepted. No ground signals. Prior to commencing the procedure, pilots are to broadcast on AFIS 125•905 MHz with flight details and intentions.

Caution: Deer hazard. Bird activity may be seasonally high. (Especially on Rwy 29 approach). High ground, 1159ft amsl 135°T/4 nm and 1465ft amsl 230°T/5 nm. Perimeter fence obstruction at western end of runway.

Warnings: Pilots are reminded of the close proximity of disused parallel taxiway to the S of Rwy 11/29, which is outside of the airport boundary fence and not available for landing/taxiing purposes.

VRPs	Lussa Loch	N55 30.63 W005 37.72
	Mull of Kintyre Lighthouse	N55 18.68 W005 48.20
	Pladda	N55 25.58 W005 07.07
	Sanda	N55 16.83 W005 34.88

Fuel: Nil.

Tel: 01586 553 797 AFIS

Fax: 01586 552 620 AFIS

Website: www.hial.co.uk/campbeltown-airport/