

**POOLEYS FLIGHT GUIDE 2026**  
**AIRNOTES**  
**AIRAC 01/2026 - (22nd January 2026)**

**LOWER AIRSPACE RADAR SERVICE (LARS)**

- 24** Waddington LARS op hrs amended to, Mon-Thu 0800-1800, Fri 0800-1300.

**NAVIGATIONAL AIDS IN THE UK**

- 38** New Nav Aid - Ventnor DME VNR 108•250 N50 36.23 W001 11.88.

**AERODROMES**

- **54 ABERDEEN/Dyce** Handling: Amend to:-  
Primeflight: Tel: 01224 348517, Mob: 07791 973108, Radio 131•415.  
Email: abzops@primeflight.com.  
Signature: Tel: 01224 723636, Fax: 01224 725458, Radio 131•615. Operators must use Aberdeen SITA address ABZPA7X for all inbound flights.
- **93 BENBECULA** Op hrs: Amend to, Mon-Fri 0830-1600; Sat 0830-0915, 1045-1245; Sun 1645-1800. Amend ATS hrs to, Mon-Fri 0800-1630; Sat 0800-0915, 1030-1245; Sun 1600-1800.
- **105 BIGGIN HILL** Noise Sensitive Areas updated.
- **106 BIGGIN HILL** Noise Sensitive Areas updated.
- **112 BLACKBUSHE** HTA 2 removed, taxiway F now designated as disused.  
See [www.pooleys.com/information-pages-about/pooleys-uk-flight-guide-amendments/](http://www.pooleys.com/information-pages-about/pooleys-uk-flight-guide-amendments/)
- **121 BODMIN** Com/Nav: Amend note to, Radio normally manned Fri-Sun 1000-1600.  
If no answer make blind traffic calls. Landing Fees: Amend to, Paramotor £5; Microlight £12; SEP £17; Twin or Helicopter £25. Fuel and Landing Fees may be paid via website. Op Hrs: Amend to, PPR. 0900-1700 or SS by arrangement.
- 125 BOGNOR GLIDING CLUB** Rwy 05/23 designators amended to 04/22 for both tarmac and grass runways. Swap over runway designators 02 & 02 and also 20/21. Amend runway lengths as follows, 02/20-600m, 03/21-750m, 04/22 (Grass)-830m.  
See [www.pooleys.com/information-pages-about/pooleys-uk-flight-guide-amendments/](http://www.pooleys.com/information-pages-about/pooleys-uk-flight-guide-amendments/)
- 152 BROWN SHUTTERS AIRFIELD** Heli landing pad added at the west end and north of Rwy 09/27 at the 09 end. Remarks: Add, All helicopter arrivals will be from the north or south regardless of wind. Hover taxi to the pad for landing, fuel or layover. Landing fee for helicopter on request. PPR via website form and phone for a briefing.
- **158 CAMBRIDGE** Rwy magnetic headings updated for Rwy 05/23 to 048°/228°.
- **174 CHALGROVE** Com/Nav: Amend Benson App to 120•905.
- **229 DENHAM** London CTR TMZ added to ATZ and Local Flying Area chart.  
See [www.pooleys.com/information-pages-about/pooleys-uk-flight-guide-amendments/](http://www.pooleys.com/information-pages-about/pooleys-uk-flight-guide-amendments/)
- **241 DUXFORD** Caution: Add, No overflight of the museum buildings below 1000ft AGL.
- 269 EDINBURGH** Scottish TMZ added to Edinburgh CTR chart.  
See [www.pooleys.com/information-pages-about/pooleys-uk-flight-guide-amendments/](http://www.pooleys.com/information-pages-about/pooleys-uk-flight-guide-amendments/)
- 278 ENNISKILLEN/St Angelo** Rwy 14/32 dimensions amended to 1220x30m.  
Both starter extensions reduced to 99m.
- 290 FAIROAKS** Remarks: Add, When Runway 24 is in use helicopters must not operate north of the Runway 24 final approach track until they have passed the runway thld.
- **292 FARNBOROUGH** Rwy magnetic headings updated for Rwy 06/24 to 061°/241°.
- **303 FENLAND** Op Hrs: Amend to Wed-Sun 0900-1700.  
Fuel: Add AD not licensed Mon & Tue but AVGAS 100LL available.
- **303 FISHBURN** Graphic extended to incorporate circuit and new avoids.  
See [www.pooleys.com/information-pages-about/pooleys-uk-flight-guide-amendments/](http://www.pooleys.com/information-pages-about/pooleys-uk-flight-guide-amendments/)

- 323 GLASGOW** Scottish TMZ added to Glasgow CTR chart.  
See [www.pooleys.com/information-pages-about/pooleys-uk-flight-guide-amendments/](http://www.pooleys.com/information-pages-about/pooleys-uk-flight-guide-amendments/)
- **328 GLOUCESTERSHIRE** Hot Spot 2 removed.
  - **330 GLOUCESTERSHIRE** Warnings: Add, Mixed fixed wing and rotary operations can be complex. To avoid the risk of runway incursions all operators need to ensure they are fully aware of procedures, routes and listen carefully to comply with ATC instructions.
  - 347 HAYWOOD FARM** Remove contact details for John Hunts.
  - **362 HUMBERSIDE** Rwy magnetic headings updated for both runways as follows:-  
Rwy 02/20 to 021°M/201°M; Rwy 08/26 to 081°M/261°M.
  - **369 INVERNESS** Op hrs amended to Mon-Fri 0630-2200 (0615-2230);  
Sat 0630-2130 (0615-2230); Sun 0630-2200 (0615-2230).
  - **370 INVERNESS** Handling: Replace Highland Jet Centre with:-  
Primeflight Executive: Tel: 01224 348517.
  - **380 JERSEY** Rwy magnetic headings updated for runway Rwy 08/26 to 082°M/262°M.
  - 404 LEE-ON-SOLENT** Rwy magnetic headings updated for Rwy 05/23 to 044°M/224°M.
  - **407 LEEDS/BRADFORD** Apron adjacent to holds N3 & N4 extended.
  - **412 LEEDS EAST** Rwy magnetic headings updated for Rwy 06/24 to 054°M/234°M.  
Fuel: Add Jet A1.
  - 415 LEICESTER** Rwy magnetic headings updated for all runway as follows:-  
Rwy 04/22 to 039°M/219°M; Rwy 06/24 to 048°M/228°M; Rwy 10/28 to 095°M/275°M;  
Rwy 15/33 to 148°M/328°M; Rwy 16/24 to 149°M/329°M.  
Hot Spot 1 added around the Signal Square. The taxiway adjacent to the Signal Square is encroached upon by a fence reducing the strip width to 10.35m
  - **440 LONDON HEATHROW** Rwy magnetic headings updated for Rwy 09/27 to 088°/268°.
  - **442 LONDON/LUTON** Rwy magnetic headings updated for Rwy 07/25 to 073°M/253°M.
  - **450 LONDONDERRY/Eglinton** Com/Nav: Amend Eglinton App from 123-625 to 123-630.  
Op hrs: Amend Mon to 0625-1900, 2000-2200.  
Tue-Thu to 0625-0730, 0830-1900, 2000-2200. Fri to 0625-1900, 2000-2200;  
Sat 0625-0730, 0900-1600, 1700-1800. Sun 0855-0930, 1200-1845, 1930-2200.
  - **462 LYDD** Rwy magnetic headings updated for Rwy 03/21 to 031°M/211°M.
  - 467 MANCHESTER** Rwy magnetic headings updated for Rwy 05L/23R to 051°M/231°M.  
Twy Q removed, Twy D extended, Twy D & E holds revised.
  - 476 MANCHESTER/Barton** Rwy magnetic headings updated for all runways as follows:-  
Rwy 08/26 to 082°/262°, Rwy 02/20 to 014°/194°, Rwy 13/31 to 134°/314°.
  - 499 NETHERTHORPE** Rwy magnetic headings updated for Rwy 18/36 to 174°/354°.
  - **511 NEWQUAY** Rwy magnetic headings updated for Rwy 12/30 to 121°M/301°M.  
New hold GA added on GA taxiway
  - **517 NORTH MOOR** Permitted operations limited to, Emergency Landings, Police, Military or Air Ambulance flights and pre-arranged visits. Remarks re-written.  
See [www.pooleys.com/information-pages-about/pooleys-uk-flight-guide-amendments/](http://www.pooleys.com/information-pages-about/pooleys-uk-flight-guide-amendments/)
  - 544 OLD BUCKENHAM** Rwy magnetic headings updated for both runways as follows:-  
Rwy 02/20 to 018°/198°; Rwy 07/25 (both) to 063°/243°.
  - 579 PRESTWICK** Rwy magnetic headings updated for both runways as follows:-  
Rwy 02/20 to 024°/204°; Rwy 12/30 to 122°/302°.
  - 583 PRESTWICK** Scottish TMZ added to Prestwick CTR chart.  
See [www.pooleys.com/information-pages-about/pooleys-uk-flight-guide-amendments/](http://www.pooleys.com/information-pages-about/pooleys-uk-flight-guide-amendments/)
  - **587 REDHILL** Rwy magnetic headings updated as follows:-  
All Rwy 07/25 L/R & H to 073°/253°; Rwy H18/H36 to 175°/355°.  
Hover Square Central removed.
  - **594 ROCHESTER** New holds A and B added.  
See [www.pooleys.com/information-pages-about/pooleys-uk-flight-guide-amendments/](http://www.pooleys.com/information-pages-about/pooleys-uk-flight-guide-amendments/)
  - **595 ROCHESTER** Warnings: Add, APAPI are used at night, inclement weather and when
  - 599 ST ATHAN** Rwy magnetic headings updated for Rwy 07/25 to 073°M/253°M.  
Remarks: Add, Strictly PPR, Mon-Fri via 01446 243901/2 or email:-  
stathan.ops@cw1.aero. W/ends/BHs 01446 243912.

- **607 SANDTOFT** Rwy 05/23 dimensions amended to 881x18m.  
TORA 05 - 692, 23 - 799 (HJ), 692 (HN), LDA 05 - 786, 23 (H24) 692.
- **618 SHERBURN IN ELMET** Rwy magnetic headings updated for Rwy 01/19 to 007°/187°;  
Rwy 06/24 to 058°/238° and both Rwys 10/28 to 102°/282°.
- **625 SHOREHAM** Rwy magnetic headings updated for both rwys 02/20 to 020°M/200°M  
and runway 06/24 to 062°M/242°M.
- **653 STORNOWAY** Op Hrs: Amend to Mon-Fri 0715-0915; 0945-1145; 1215-1430; 1500-  
1700; 1800-1945. Sat 0715-0915; 0945-1145; 1215-1415; 1445-1530.  
Sun 1245-1445; 1515-1715.
- **666 SWANSEA** Hot spot added at the runway intersection. HS1 - Complex intersection of  
runways and holding points. Exercise extreme caution.
- **667 SWANSEA** Remarks: Add, Aerodrome is available for aircraft requiring a licensed  
aerodrome Fri-Sun 0900-1700.
- **672 TATENHILL** Rwy magnetic headings updated for Rwy 08/26 to 073°M/253°M.
- **681 THRUXTON** Amend website to [www.thruxton.com](http://www.thruxton.com).
- **687 TIREE** Rwy magnetic headings updated for both rwys, 05/23 to 049°M/229°M and  
11/29 to 109°M/289°M
- **692 TURWESTON** Rwy details, amend:-  
Take-off: Rwy 09 from intersection with Twy B TORA from 818m to 900m.
- **701 WALNEY** Com/Nav: Add, Warton Radar 129-530 for App service.
- **709 WESTRAY** Rwy magnetic headings updated for both runways as follows:-  
Rwy 09/27 to 084°M/264°M; Rwy 13/31 to 129°M/309°M.
- **722 WHITE WALTHAM** Rwy magnetic headings updated for runways as follows:-  
Rwy 03/21 to 025°/205°; Rwy 11/29 to 109°/289°.
- **723 WHITE WALTHAM** London CTR TMZ added to the Area chart.  
[See www.pooleys.com/information-pages-about/pooleys-uk-flight-guide-amendments/](http://www.pooleys.com/information-pages-about/pooleys-uk-flight-guide-amendments/)
- **726 WICK** Op Hrs: Amend to, Mon-Fri 1030-1730, Sat-closed, Sun 1430-1630.
- **727 WICKENBY** Rwy magnetic headings updated for runways as follows:-  
Rwy 03/21 to 024°/204°; Rwy 15/33 to 149°/329°.
- **732 WOLVERHAMPTON/Halfpenny Green** Com/Nav: NDB WBA & DME WOL removed.  
Nav aids also removed from the graphic.

## GOVERNMENT AERODROMES

- 783 WESTON ON THE GREEN** Com/Nav: Weston DZ frequency amended to 120.090.

# EGPL (BEB)

N57 28.83 W007 21.83 **BENBECULA** 19ft AMSL

West side of Isle of Benbecula.

///mason.guarding.renovated

**TIR 117-70 352 61-4**

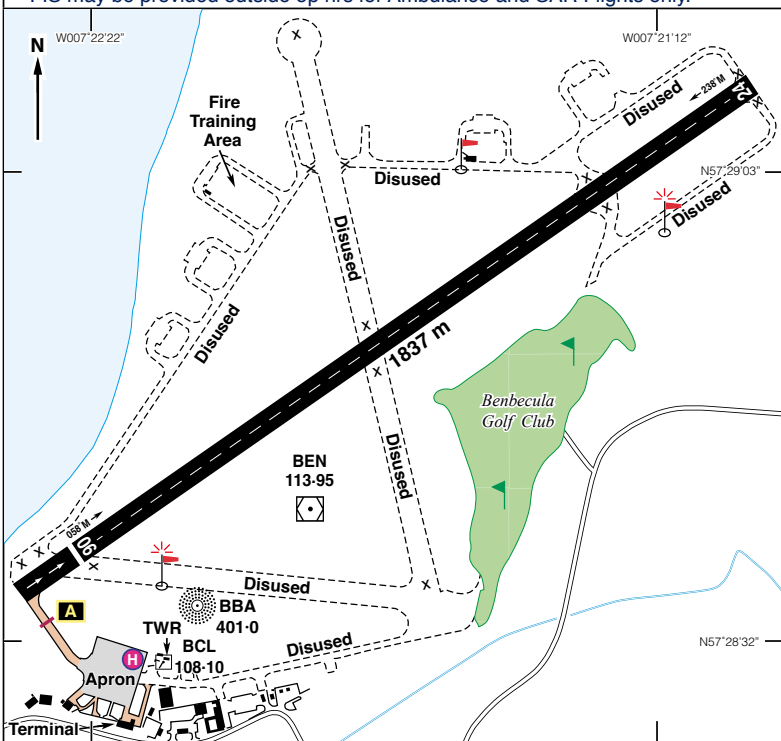
**STN 115-10 225 57-8**

**c/s Benbecula** APP/TWR/FIS\* 119-205 | ATIS 129-885 c/s Benbecula Information.

NDB 'BBA' 401-0 (On A/D) | VOR/DME 'BEN' 113-950 (On A/D) H24

DME 'BCL' 108-100 ( on A/D) | \*\*ATS Op hrs below and by arrangement with HIAL.

\* FIS may be provided outside op hrs for Ambulance and SAR Flights only.



Rwy	Dim(m)	Surface	TORA(m)	LDA(m)	Lighting
06/24	1837x40	Bitumen	06-1837 24-1688	06-1717 24-1688	Ap Thr Rwy PAPI 3° Ap Thr Rwy PAPI 3°

**AD Op hrs:** PPR 3 Hrs. Mon - Fri 0830-1600; Sat 0830-0915, 1045-1245; Sun 1645-1800, and by arrangement with HIAL.

**\*\*ATS Op hrs:** Mon - Fri 0800-1630; Sat 0800-0915, 1030-1245; Sun 1600-1800, and by arrangement with HIAL.

**Check current NOTAMs for any changes to AD Op hrs.**

*continued*



# EGPL

N57 28.83 W007 21.83 **BENBECULA** 19ft AMSL

**Landing Fee:** Private light aircraft up to 3000 kg MTWA - £22.30 inc, VFR and booked in advance.

**Customs:** By arrangement, 48 hrs PNR.

**Customs:** Nil.

**Hangarage:** Nil.

**Maintenance:** Nil.

**Remarks:** Operated by Highlands & Islands Airports Ltd., Benbecula Aerodrome, Balivanich, Western Isles HS7 5LW.

Prior permission 3 hours notice required for all movements.

## Circuits:

- a) Circuit Height: 1000ft aal unless instructed by ATC.
- b) Circuit Directions: Runways 06 - LH; Runway 24 - RH.
- c) Joining instructions as instructed by ATC.

**Handling:** Limited aircraft handling provided by Loganair, Tel: 01870 602310.

## Warnings:

- a) Intensive military activity takes place in the vicinity. ATIS/ATIS will advise EG D701A-F, Y and EG D704 activity. Instrument approaches to Runway 06 may not be available or may be restricted during periods of activity. The entry procedure from the BEN VOR and the BBA NDB, for instrument approaches to Runway 24, may not be available or may be restricted during periods of activity.
- b) The aerodrome is frequently opened for Air Ambulance and SAR flights outside published hours.
- c) The use of the aerodrome is unavailable for 'out of hours' permit holders due to airport security restrictions.
- d) All taxiways are closed, except between threshold of Runway 06 and the apron.
- e) There are no marked parking stands on the apron due to rapid changes in wind conditions, marshallers will be provided.
- f) Grass areas are soft and unsafe. Poor load bearing characteristics may be found on the runway/taxiway strips and the area adjacent to the apron. Only marked taxiway to be used.
- g) The apron area is subject to aerodrome security procedures during published hours.
- h) Flocks of geese present on, and in fields adjacent to, the aerodrome, all year round.
- i) Runway 24 during strong winds, moderate turbulence may be experienced on final between 8 to 4 nm.

## Visual Reference Points (VRPs):

### VRP

Lochmaddy Pier  
Monach Isles Lighthouse

### Co-ordinates

N57 35.77 W007 09.40.  
N57 31.58 W007 41.65.

**Accommodation:** Hotels nearby. **Restaurant:** Light refreshments available.

**Car Hire:** Tel: 01870 602191.

**Fuel:** Nil.

**Tel:** 01870 602051 Admin.  
01870 604818 A/D & Met Info.  
01870 604804 ATC.  
0141 842 7455 Logan Air Ops.  
**Fax:** 01870 602278 Admin.  
01870 604826 ATC.

**Website:** [www.hial.co.uk/benbecula-airport](http://www.hial.co.uk/benbecula-airport)

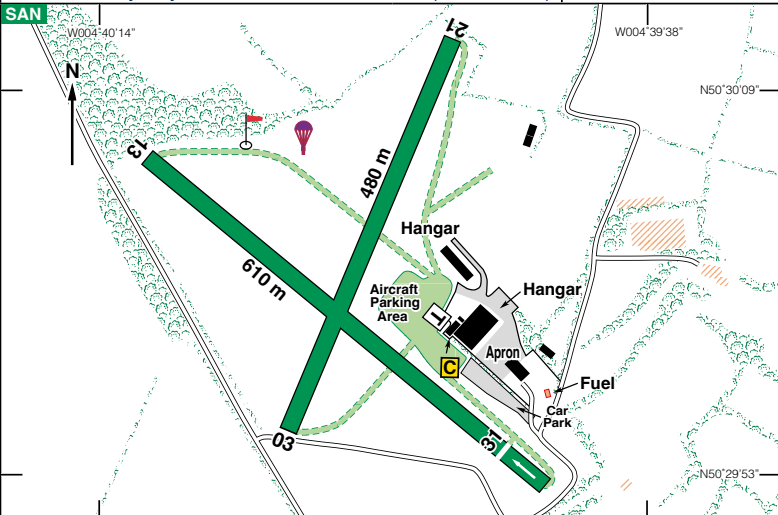
# EGLA

N50 29.98 W004 39.95 **BODMIN** 650ft AMSL

3.5 nm NE of Bodmin. **LND 114.20 064 43.1. BHD 112.05 282 45.2**

**c/s Bodmin Radio** 120.330 A/G Newquay APP 133.405 (LARS) 0730-2030

Radio normally only manned Fri-Sun 1000-1600 (see remarks)\* ///baseless.note.verdict



Rwy	Dim(m)	Surface	TORA(m)	LDA(m)	Lighting
13/31	610x18	Grass	13-598 31-610	13-598 31-540	Nil Nil
03/21	480x18	Grass	03-480 21-480	03-480 21-480	Nil Nil

**Op Hrs:** PPR. 0900-1700 or SS by arrangement.

**Landing Fee:** Paramotors £5; Microlights £12; SEP £17; Twin & Helicopters £25.

**Hangarage:** £30 per night/£10 outside. **Maintenance:** Available. **Customs:** 24 hrs PNR.

**Remarks:** Operated by Cornwall Flying Club Ltd. Strictly PPR by telephone. Use of AD limited to aircraft below MTWA of 2490 kg (5500 lbs). Down gradient on Rwy 13. Aerodrome unlicensed. Intensive flying training. \*Radio- If no answer, make blind traffic calls.

**Circuits:** At 800ft aal. RH-Rwy 13&21, LH-03&31. Contact Newquay APP 133.405 inbound. All Westbound pilots departing Bodmin, please ensure you call Newquay APP 133.405.

**Warnings:** Runway ends not visible from the take-off position. Windshear and turbulence may be encountered in strong winds. Exercise caution taxiing to apron and refuelling area due sloping rough ground and congestion. Large vehicles use the road passing through the undershoot area to Rwy 03. The road is within 40m of the marked threshold on the runway extended centreline. High Ground 385ft aal, 1010ft amsl 048°/3.8 nm, and 267ft aal, 892ft amsl 070°/1.8 nm. **Warnings for Millpool range, see overleaf.**

**Refreshments** at the AeroDine Café, Tue-Sun 0930-1530. No hot food after 1430.

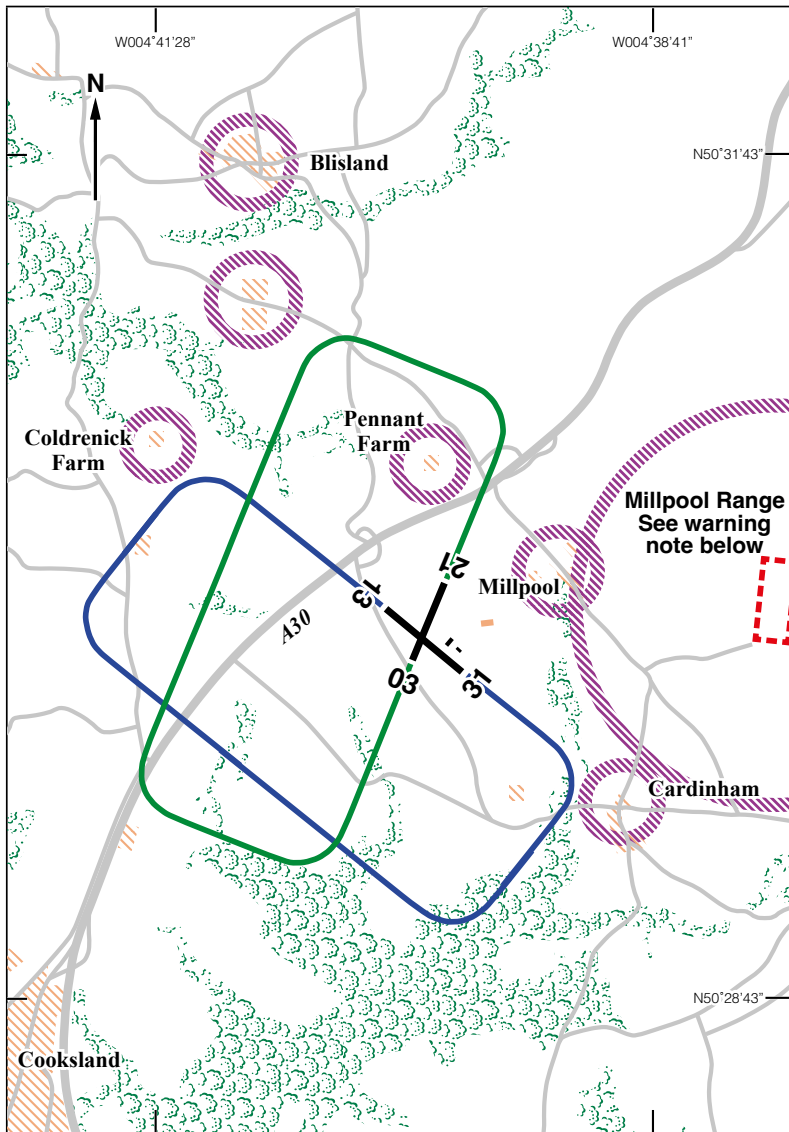
**Taxi:** Bodmin Parkway Cabs: 07990 733666. Parnell's: 01208 75000.

Beacon Taxi's 07858 522054

**Fuel:** 100LL, UL95 Ethanol Free.  
Fuel & Landing fees may be paid via web-site.

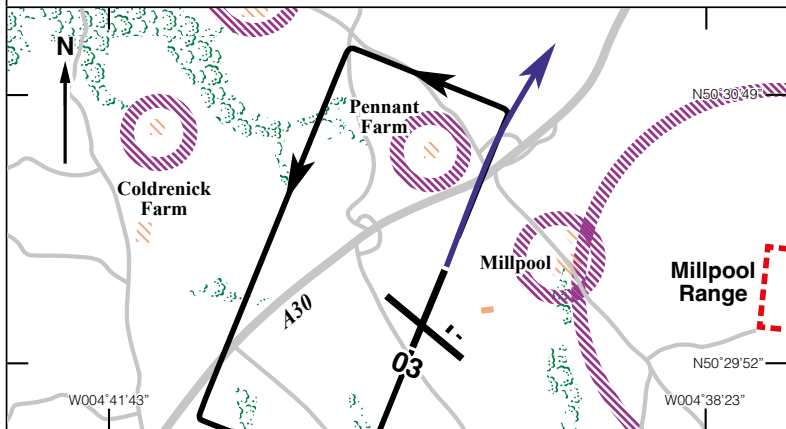
**Tel:** 01208 821419  
**Email:** bodminairfield@gmail.com  
**Website:** www.bodminairfield.com

# BODMIN CIRCUITS



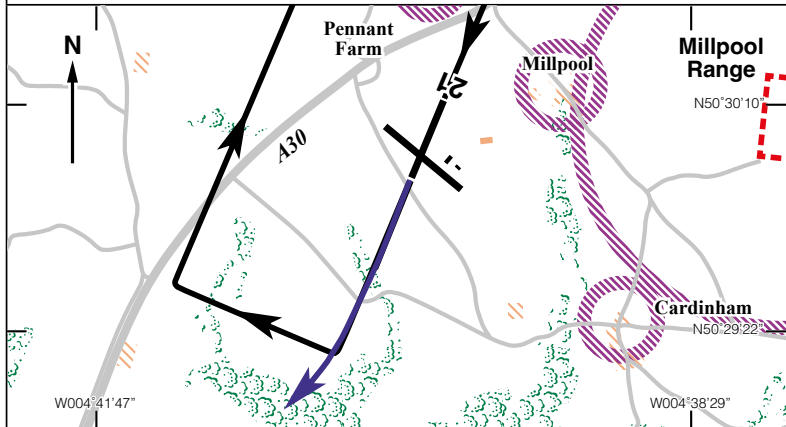
**Millpool Range Warning:** When Millpool Range (1.4nm ENE the airfield) is active, no joins from the North through East are allowed below 1000ft AAL (QFE). If the Range is active by Notam, this restriction is not below 2000ft AAL. Approaches to Rwy 21 are allowed but pilots should remain West of the A30 until short final.

## BODMIN - RUNWAY 03 DEPARTURES



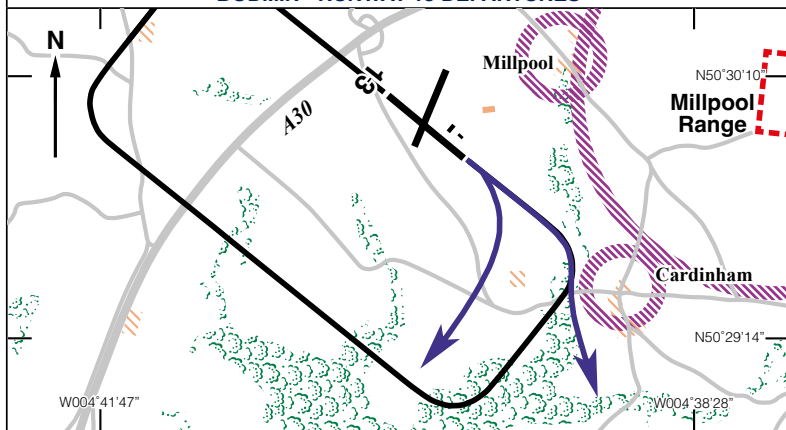
1. Aircraft taking off from runway 03 are to avoid overflying Pennant Farm.
2. Aircraft departing the circuit are to continue straight ahead until past Pennant Farm before continuing on track.
3. Aircraft remaining in the circuit are to turn onto the crosswind leg after passing Pennant Farm or when reaching an altitude not below 500ft AGL.

## BODMIN - RUNWAY 21 DEPARTURES



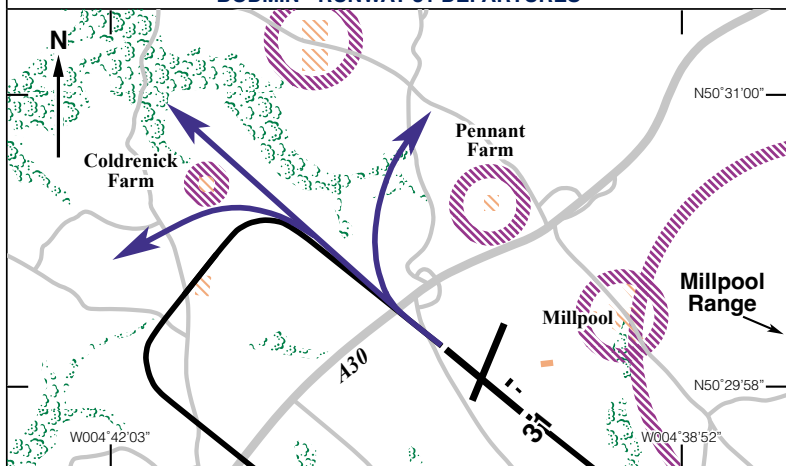
1. Aircraft taking off from runway 21 are to avoid Cardinham village.
2. Aircraft departing the circuit are to continue straight ahead before continuing on track.
3. Aircraft remaining in the circuit are to turn onto the crosswind leg when reaching an altitude not below 500ft AGL.

## BODMIN - RUNWAY 13 DEPARTURES



1. Acft taking off from Rwy 13 are to avoid overflying Cardinham village.
2. Acft departing the circuit are to turn on track before Cardinham village.
3. Acft remaining in the circuit are to turn onto the crosswind leg before reaching Cardinham village or when reaching an altitude not below 500ft AGL.

## BODMIN - RUNWAY 31 DEPARTURES



1. Acft taking off from Rwy 31 are to avoid overflying Pennant Farm, Coldrenick Farm and Blisland village.
2. Acft departing the circuit are to right on track when between Pennant Farm and Blisland village or turn left on track inside Coldrenick Farm. Alternatively, acft are to continue straight ahead until past both Coldrenick Farm and Blisland village before initiating either a right hand or left hand turn on track.
3. Acft remaining in the circuit are to turn onto the crosswind leg before reaching Coldrenick Farm or when reaching an altitude not below 500ft AGL.

# EGSC

N52 12.30 E000 10.50

**CAMBRIDGE**

48ft AMSL

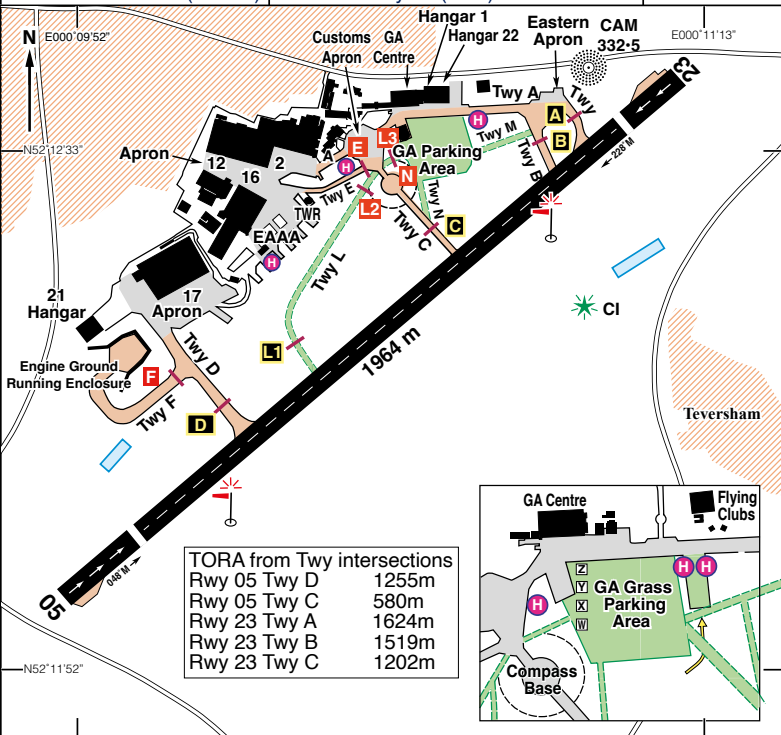
1.5 nm E of Cambridge.

CLN 114-55 303 41-8

///ace.ally.anyway

**c/s Cambridge** APP/VDF 120-965 TWR 125-905 ATIS 134-605 OPS 129-700

NDB 'CAM' 332-50 (on A/D) ILS/DME Rwy 23 (229°) 'I CMG' 111-30



Rwy	Dim(m)	Surface	TORA(m)	LDA(m)	Lighting
05/23	1964x45	Concrete	05-1843 23-1886	05-1612 23-1742	Ap Thr Rwy PAPI 3° Ap Thr Rwy PAPI 3° IBn 'CI' Gn

**Op hrs:** Mon-Fri 0800-1800.

ATS Mon-Fri, hrs as above, Sat & Sun no ATS, Local flying only. No visiting aircraft. Strictly PPR via ATC (or online PPR form) minimum 24 hrs prior to ETA.

**Landing Fee:** Flights under 2.7 tonnes MTOW - Singles £37; Twins £49;

**Hangarage/Maintenance:** Nil.

**Customs:** A completed General Aviation Report form must be submitted at least 24 hours before arrival using the UK Border Force online application system.

**Remarks:** Operated by Cambridge International Airport, The Airport, Cambridge CB5 8RX.

Non radio aircraft not accepted.

Aircraft must carry Third Party Insurance of not less than £1,000,000.

Mobile phones to be switched off airside

Noise Abatement Procedures in force - See UK AIP.

Light aircraft will be directed to the grass parking area in front of No 1 Hangar.

Parking is on row marked Whisky or X-ray or as directed by ATC.

Aircraft taxiing on grass areas are to keep to cut grass taxiways. The long grass areas are not inspected and are unfit for manoeuvring.

Runway 23 Main, in the event of a go-around, conduct the go-around over the main runway avoiding flying over the dead side.

Circuit Height: Multi-engined 1500ft QFE; other fixed-wing aircraft 1000ft QFE and Helicopters at 700ft QFE. LH on 23; RH on 05.

Helicopters routing to the aerodrome should avoid overflight of, or passing in close proximity to Cambridge City and surrounding villages.

Aircraft approaching concrete Rwy 05/23 visually are to follow a descent path from at least 1000ft that is no lower than the normal approach path indicated by the PAPI.

Aircraft requiring a left turn after take-off on Rwy 05 are to make a left turn out when clear of the City. Aircraft requiring a right turn after take-off on Rwy 23 are to maintain runway heading until at least 2000ft aal or until clear of City.

Handling mandatory for aircraft over 2.7 tonnes. Handling Agent:

Executive handling services available from Cambridge Jet Centre,

Tel: 01223 373214. Email: fbo@cambridgeairport.com. c/s Marshall Cambridge 131•780.

Handling for visiting light GA aircraft under 2.7 tonnes is only mandatory outside of the Cambridge Aeroclub opening hours. Aeroclub open 0830-1800 daily.

The wearing of high visibility clothing is mandatory in all airside areas.

**Warnings:** Aerial activity takes place outside AD published Op hrs.

Runway 05 - possible turbulence in touch-down area.

Taxiway Alpha, please be aware of taxiing speeds and pedestrians crossing.

Possible glare from car park to the right of Rwy 23 approach.

**PPR online form via** [www.cambridgeairport.com/airfield-information/](http://www.cambridgeairport.com/airfield-information/) (24 hr PNR)

**Restaurant:** Full restaurant service 1230-1400 Mon-Fri only.

**Car Hire:** Thrifty, Tel: 01223 244233.

**Fuel:** 100LL, Jet A1/FSII.

Fuel available 0900-1730 Monday - Sunday. All local times,

AVCARD, Multi-Service & most other Credit Cards.

**Tel:** 01223 373213 ATC (PPR)

01223 373717 GA

01223 373214 Cambridge Jet Centre/FBO

01223 373535 Airport Ops

01223 295631 ATIS

**Fax:** 01223 373502 ATC

01223 373259 Airport Ops

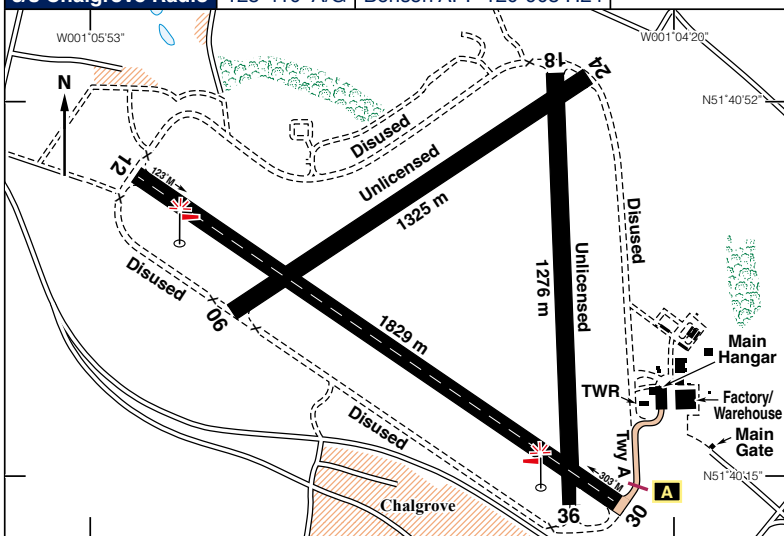
**Email:** [ATC.admin@cambridgeairport.com](mailto:ATC.admin@cambridgeairport.com)

**Website:** [www.cambridgeairport.com](http://www.cambridgeairport.com)

N51 40.47 W001 05.12

**CHALGROVE**

240ft AMSL

8 nm SE of Oxford. [///height.tolls.zeal](http://height.tolls.zeal)**CPT 114-35 028 12-6****c/s Chalgrove Radio** 125-410 A/G Benson APP 120-905 H24

Rwy	Dim(m)	Surface	TORA(m)	LDA(m)	Lighting
12/30	1829x30	Asphalt	12-1784 30-1784	12-1784 30-1784	Thr Rwy Thr Rwy
06/24	1325x46	Asphalt	06-1284 24-1284	06-1284 24-1284	Nil Nil
18/36	1276x46	Asphalt	18-1271 36-1271	18-1271 36-1219	Nil Nil

**Op hrs:** Strictly PPR by Telephone. As required to support Martin Baker.**Landing Fee:** On application.**Customs:** By arrangement.**Hangarage:** Nil.**Maintenance:** Nil.**Remarks:** Operated by Martin-Baker Aircraft Company Ltd, Chalgrove Airfield, Oxford OX44 7RJ. Licensed. The aerodrome may be active 24/7.

Regular movements occur during 'quiet hours'. Visitors by special arrangement only.

Airfield situated within Benson MATZ, contact Benson APP on 129-905 for MATZ crossing service, and for landing/departures at Chalgrove.

Movements on all grass areas prohibited due obstructions.

To avoid noise over Chalgrove village, landings on Rwy 36 and departures from Rwy 18 are not permitted. Overflight of hangar and buildings prohibited below 1000ft agl.

**Circuits** at 1000ft to the north.**Warnings:** Ejection seat inflight tests from Meteor aircraft take place up to 1000ft agl/450 kt. Parachute drop tests also conducted from helicopters up to 5500ft agl.**Fuel:** Jet A1.**Tel:** 01865 892243 or 892250 **Fax:** 01865 892214



# EGLD

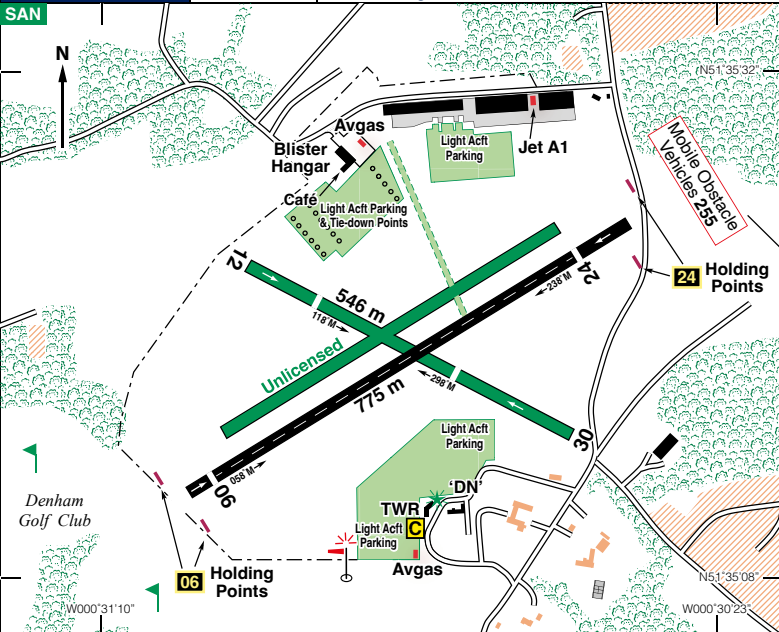
N51 35.30 W000 30.78

DENHAM

249ft AMSL

7.5 nm N of Heathrow Airport. *///early.harder.prone*

c/s Denham Radio 130-730 A/G Farnborough Radar 132-800 (LARS) 0800-2000



Rwy	Dim(m)	Surface	TORA(m)	LDA(m)	Lighting
06/24	775x18	Asphalt	06-686	06-706	Thr Rwy APAPI 4.5°†
			24-728	24-670	Thr Rwy APAPI 4.5°
12/30	546x18	Grass	12-363	12-419	Nil
			30-432	30-363	Nil
					IBn 'DN' Gn

† APAPIs on Rwy 06 are visible to the left of extended centreline where normal obstacle clearance is not guaranteed. Ignore signals until aligned with runway.

**Op hrs:** PPR is required for every flight, see [www.egld.com](http://www.egld.com) for webform.

Winter: 0800-1800. Summer 0800-2000; and by arrangement.

**Landing Fee:** Up to 1000 kg £21.60; 1001–1500 kg £24.00. All inclusive of VAT. Other fees on request.

**Customs:** EU 2 hrs PNR, non EU 2 hrs PNR. Special Branch 12 hrs notice.

**Hangarage:** By arrangement.

**Maintenance:** Fixed wing: London Denham Aviation Ltd, 01895 832335  
Rotary wing: HQ Aviation Ltd, 01895 833373, AS Aerospace Ltd, 01895 831694.

*continued*

**Remarks:**

• **Operated by Bickertons Aerodromes Ltd.** Denham is just inside the London CTR (Controlled Airspace Class 'D'). See ATZ and LFA chart. Part of Denham's ATZ is inside the London CTR and is called the Denham Local Flying Area (LFA).

• **The maximum altitude in the LFA is 1000' QNH.**

• The LFA extends up to 1200' QNH only to provide a margin for altimetry errors.

• **Non radio aircraft are not accepted without permission from the AD operator.**

**Joining Procedures**

• There is no overhead join. Aircraft must be at or below 1000' QNH (750' QFE)

• Rwy 24 right hand circuit. Rwy 06 left hand circuit. Rwy 12/30 variable circuit

• Pilots must not compromise safety to fly the small circuit described in these procedures and should fly a larger circuit if it is necessary to maintain safe separation.

**To join the circuit and land.**

• Descend to circuit altitude 1000' QNH (750' QFE) and reduce speed for the circuit (if necessary) before reaching the VRP.

• Arrival runway 24: report at Maple Cross VRP, fly the base leg over the lakes unless safe separation requires otherwise.

• Arrival runway 06: report at St Giles VRP, fly the base leg to the east of the A413 to avoid Gerrards Cross unless safe separation requires otherwise.

• At the VRP **look out** for traffic in the circuit and **give way**.

Aircraft in the circuit have priority. Joining aircraft shall give way to traffic in the circuit: either reduce speed and fit in; or fly a larger circuit and maintain circuit altitude until it is safe to fit in.

**Departing procedures**

• Departure runway 24; after take off maintain runway heading until past the houses on the right, then turn right before the A413 (were safely possible)

• Departure runway 06; after take off maintain runway heading until past the caravan site on the left, then turn left over the lakes (were safely possible)

• Do not climb above circuit altitude 1000' QNH (750 QFE)

• Extend crosswind leg out of the circuit towards the VRP before turning on track

**Circuit procedures**

• Conspicuity: landing light on; strobes on; transponder alt.

**Visual Reference Points (VRPs)****VRP****Co-ordinates**

**Maple Cross**-Eastern end of spur road to M25 Jct 17 .....N51 37.77 W000 30.25

**St. Giles**-X roads on A413 to the E of Chalfont St Giles .....N51 38.03 W000 34.02

**Warnings:** Powerlines, 369ft AMSL, 270°T, running north/south, 0.6nm from ARP.

A public road crosses final approach to Rwy 24, 100m from displaced threshold.

**Restaurant:** Biggles licensed Restaurant located south side near Tower, closed Mondays, Tel: 01895 834241.

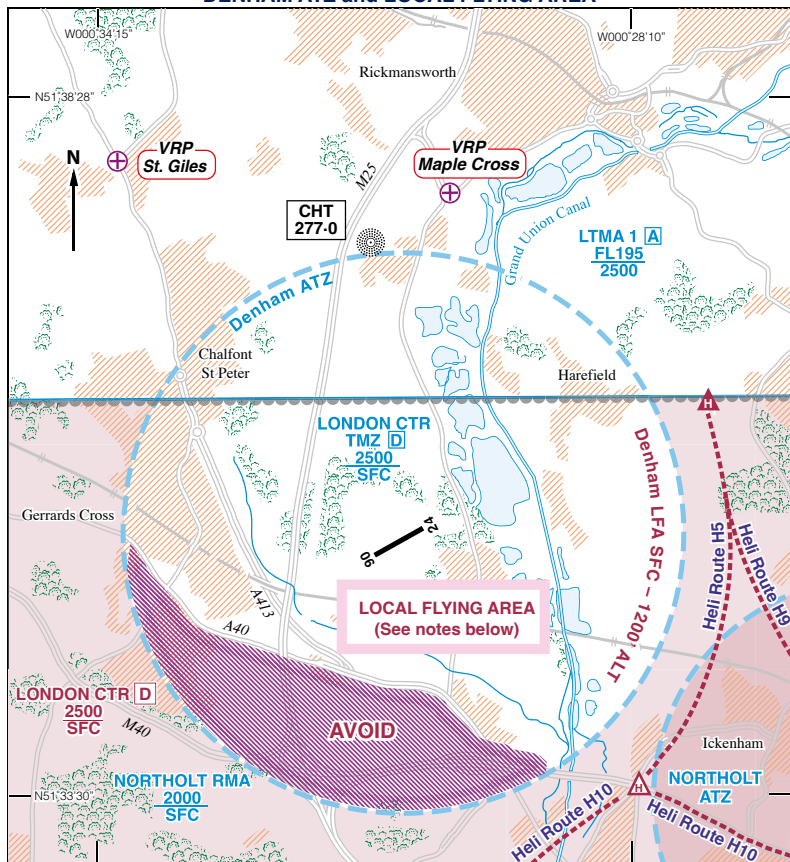
**Crew Room Café:** Licensed café located north side by Blister Hangar, open from 10am - 4pm, closed Mondays. Tel: 01895 834568.

**Taxis:** Carline, Tel: 01895 247247.

**Fuel:** Jet A1+AL48,  
Mon-Fri 0900-1430 or by arrangement.  
100LL, 0800-1800.  
Aircraft electric charge point available by prior arrangement.

**Tel:** 01895 832161 Twr; 060 Admin  
**Email:** tower@egld.com  
**Website:** www.egld.com

## DENHAM ATZ and LOCAL FLYING AREA



### DENHAM LFA

In the Local Flying Area (the part of the ATZ in London CTR) flights without compliance with IFR requirements may take place subject to the following conditions:

1. Aircraft to remain clear of cloud with the surface in sight.
2. Maximum circuit altitude 1000ft AMSL, with a minimum flight visibility of 3 km.
3. The area to the South of the A40 is to be avoided at all times.

- Notes:**
1. Pilots are responsible for providing their own separation. Joining aircraft should give way to circuit traffic.
  2. Flights to the East, South or West through London CTR require SVFR clearance. Pilots inbound with SVFR clearance must contact Denham Radio before entering the ATZ and must give way to circuit traffic. If necessary, keep clear of the ATZ, leave the CTR and follow the published joining procedures.

# EGLF (FAB)

FARNBOROUGH

238ft AMSL

1 nm NNW of Aldershot.

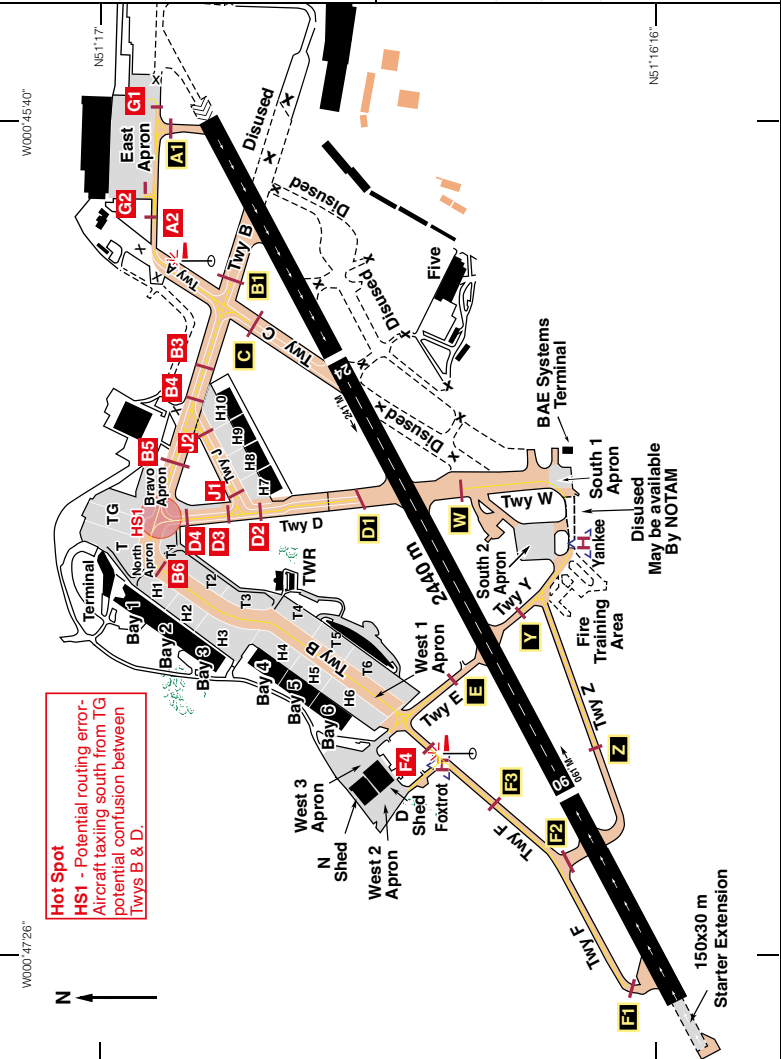
CPT 114.35 131 21

///glitz.breed.public

c/s Farnborough Radar 134.355, RAD (LARS) 125.250(W), 123.225(E) 132.800(N)

TWR 122.780 ATIS 128.405 GND 121.815 Zone 133.440 RAD c/s Director 130.055

ILS/DME Rwy 06 (062°M) 'I-FRG' 111.550 ILS/DME Rwy 24 (242°M) 'I-FNB' 111.550



# EGLF (FAB)

N51 16.52 W000 46.65 **FARNBOROUGH** 238ft AMSL

Rwy	Dim(m)	Surface	TORA(m)	LDA(m)	Lighting
06/24	2440x45	Concrete/ Asphalt	06-2000 †† 24-2063 †	06-1800 22-1800	Ap Thr Rwy PAPI 3.5° Ap Thr Rwy PAPI 3.5°
†	Take-off: Rwy 06 from intersection of Twy F1-TORA 1809m Take-off: Rwy 24 from intersection of Twy B - TORA 1828m				
††	Rwy 06 includes 150m starter extension.				

**Op hrs:** Mon-Fri 0700-2200 ; Sat, Sun & PHs 0800-2000. **ATZ active H24.**  
PPR essential. AD may close earlier if there is no scheduled traffic. See NOTAMS

**Landing Fee:** Contact Farnborough Ops for rates, Tel: 01252 379002.

**Parking:** Contact Farnborough Ops for rates, Tel: 01252 379002.

**Hangarage:** Available.

**Customs:** Available.

**Maintenance:** Farnborough Airport Engineering Tel: 01252 372400.

**Remarks:** Operated by Farnborough Airport Ltd., Farnborough Airport, Farnborough, Hampshire GU14 6XA. Prior permission from Farnborough Ops, Tel: 01252 379002.  
The filling of a flight plan does not guarantee granting of PPR. For short notice movements, especially diversions, contact Ops on 131•865.

Only aircraft that are 8•33 kHz compliant will be accepted.

Pilots operating in the Farnborough LARS West area of responsibility, but intending to remain outside Class A to D and maintaining a listening watch only on Farnborough LARS West frequency 125•250 are encouraged to select SSR code 4572. Selection of the code does not imply the provision of any form of Air Traffic Service.

**Note:** Radar services on 125•250 not available below 1500ft AMSL.

Use of the handling agent is normally mandatory. Ground handling for all visiting civil aircraft will be undertaken by Farnborough Airport on the North Apron.

Circuit at 1000ft QFE (2730kg or less), 1500ft QFE (over 2730kg).

The starter extension on Rwy 06 has a 20m turning circle at the west end.

Pilots must be fully conversant with the strict Noise Abatement Procedures notified in the UK AIP.

Helicopter procedures - See overleaf and chart at page 296.

All aircraft will be charged an emissions levy. Contact Farnborough Airport Operations on 01252 379002 for full details.

**Warnings:** Danger Areas D132, D133A and D133B are within 3nm of the eastern boundary of the A/D. On approach to Rwy 24 the 3.5° GP is mandatory to ensure safe clearance above D133A & D133B and noise abatement purposes.

Traffic carrying out instrument approaches to Rwy 27 at ODIHAM will pass approx 2.5 nm S of Farnborough aerodrome at 2000ft QNH or lower.

Below FL65 acft arriving/departing via the ATS route network can expect to operate within Class E airspace between ASLAP and 3 nm West of HAZEL/within 7.5 nm of GWC.

**Accommodation:** Hotel on A/D and several within 2 nm of A/D.

**Restaurants:** Several within 2 nm of airport.

**Fuel:** Jet A1 & SAF.  
(Sustainable Aviation Fuel)  
Multi-Service Mon-Fri 0545-2215  
Sat, Sun & PH 0700-2015. Helis-Rotors  
running refuelling is not permitted.

**Tel:** 01252 524440 PPR  
**Tel:** 01252 526017 ATC  
**Tel:** 01252 379002 Ops  
**Email:** ops@farnboroughairport.com  
**Website:** www.farnboroughairport.com

**HELICOPTER ARRIVAL and DEPARTURE PROCEDURES****a. Arrival Procedures**

On first contact pilots shall advise ATC as to whether they require an IFR or a VFR approach. Due to the noise sensitivity of the areas surrounding Farnborough, the preferred approach for helicopters during daylight hours is VFR; however, instrument approaches are available on request.

**i. IFR**

1. Standard instrument approach to Rwy 06 or 24.

**ii. VFR**

1. Visual approaches to Runway 06 or 24 are only permitted when flown in accordance with UK AIP EGLF AD 2.21 - NOISE ABATEMENT PROCEDURES section 4 Arrivals. Delays may occur when ILS approaches are being carried out.

2. To minimise delays and noise disturbance, helicopter routing to or from Farnborough, VFR, should follow one of four established routes:

**aa WEST ROUTE:** From/To the West:

Join and follow the Basingstoke - Woking railway line to 'North Gate', then route towards the Northern aerodrome boundary via Southwood Country Park avoiding built up areas (See Note 1).

**bb NORTH ROUTE:** From/To the North:

Join and follow the M3 until 'North Gate', then route towards the Northern aerodrome boundary via Southwood Country Park avoiding the built up areas (See Note 1).

**cc EAST ROUTE:** From/To the East:

Route from Worplesdon Railway Station to Longerend Farm on the A324 and then to Surprise Hill. From Surprise Hill route west to join the Basingstoke Canal where it passes under the B3411 and railway bridges (Two Bridges). Follow the canal to the southern end of Queens Parade, then towards the Queens Roundabout for Rwy 24 and Heli Bravo or towards the southern aerodrome boundary via the Army Golf Course for Rwy 06 and Heli Yankee (See Notes 2 and 3).

**dd SOUTH ROUTE:** From/To the South and Southwest:

Route to the A31/A331 junction (The Junction) avoiding the built up areas around Farnham. Follow the A331 to join the Basingstoke canal where it crosses over the dual carriageway then to the southern edge of Queens parade and then towards the Queens Roundabout for Rwy 24 and Heli Bravo or towards the southern aerodrome boundary via the Army Golf Course for Rwy 06 or Heli Yankee (See Note 2 and 3).

**Note 1:** 'North Gate' is the unpopulated area between Fleet Pond and M3 Junc 4A. Helicopters must maintain at least 1700 ft QNH if they require to fly over any part of the QinetiQ site, Southwood or Fleet.

**Note 2:** The section of the East Route between Longerend farm and Surprise Hill comes close to the southern edge of D132. Normally it is active to 500ft and it is the pilot's responsibility to remain outside the Danger Area. If EG D132 is notified as active above this level then this route will be closed by NOTAM. Pilots will be instructed to either follow the Woking to Basingstoke railway line to join via North gate, or to use the Farnham Route, depending on traffic.

**Note 3:** Helicopters must avoid overflying all built up areas below 1700 ft amsl unless instructed by ATC. Pilots may be instructed to route to Heli Yankee to hold if there is fixed-wing traffic arriving or departing.

**HELICOPTER ARRIVAL and DEPARTURE PROCEDURES**

iii. Two helicopter aiming points are established at Farnborough Aerodrome:

1. Heli Foxtrot (N51 16.52 W000 47.05), that part of 'F' taxiway between F3 and the entrance to West 2 apron;
2. Heli Yankee (N51 16.37 W000 46.52), the centre of South 2 apron.

Pilots should avoid overflying aircraft parked on South 1 apron. Pilots to be aware of possible vehicle activity. Landing clearance from ATC will be "Land at your discretion".

**b. Departure Procedures**

Departures must take place from Runway 06/24, Heli Foxtrot or Heli Yankee.

**i. IFR**

1. ATC will allocate a transponder code, along with an assigned heading and altitude, which will ensure deconfliction from other traffic and compliance with noise abatement procedures.

**ii. VFR**

1. Outbound routings must comply with noise abatement procedures, and are the reverse of the inbound routes.

**4 Route Waypoints:**

M3 Junction 4A	N51 18.20	W000 48.02
Southwood Country Park	N51 17.22	W000 47.33
Longerend Farm	N51 15.68	W000 40.82
Surprise Hill	N51 15.38	W000 42.87
Two Bridges	N51 15.38	W000 43.32
The Junction	N51 13.72	W000 44.50
Queens Parade	N51 15.78	W000 45.70
Queens Roundabout	N51 16.40	W000 45.43

**5 Visual Reference Points** (Used on the routes) (For full list of VRPs see page 297)

Bagshot	N51 20.95	W000 41.95
Hook Railway Station	N51 16.77	W000 57.72
Fleet Ponds	N51 17.32	W000 49.48
Worpleston Railway Station	N51 17.27	W000 34.95

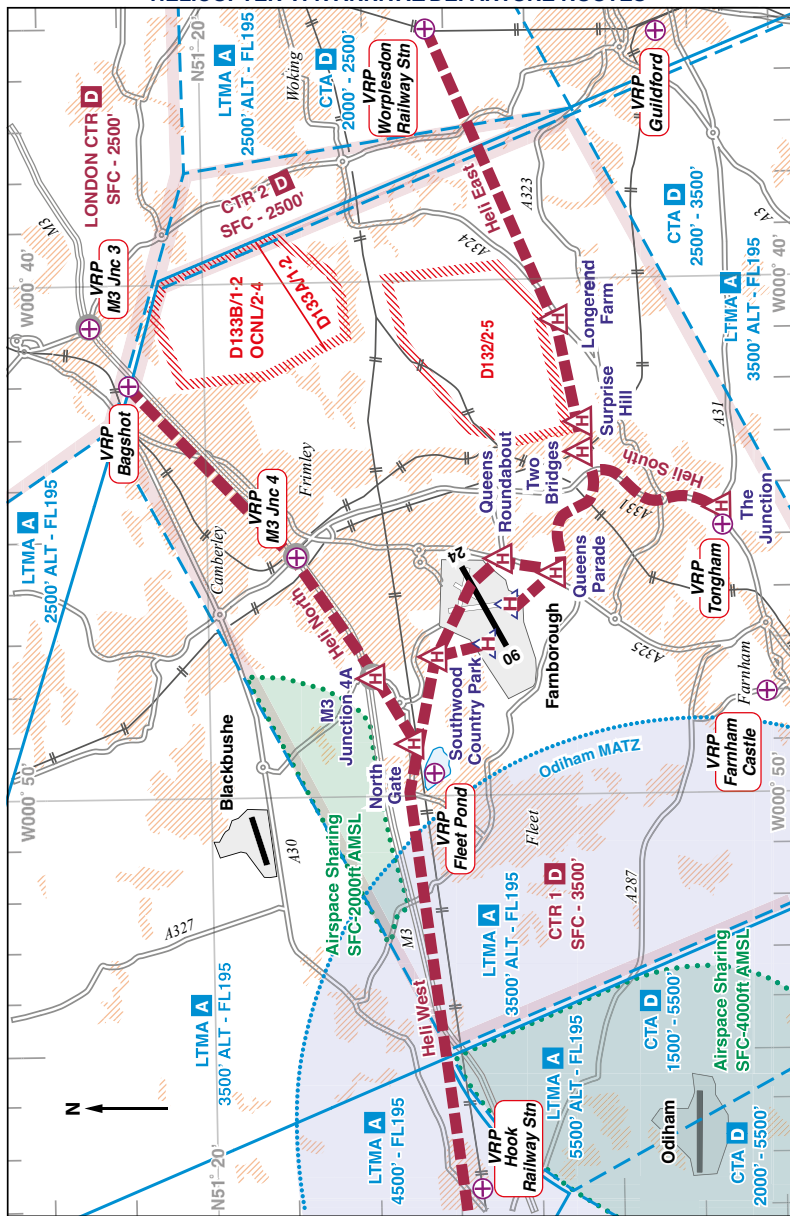
**Note 1:** Eastbound helicopters intending to join Helicopter Route H3 in the London Control Zone should use the following line features: railway line then the M3 Motorway to Bagshot VRP.

**Note 2:** Pilots are advised that the VRP Bagshot is located approximately 1nm SE of Bagshot Mast.

Pilots are reminded of the close proximity of busy minor aerodromes, ATZs, intense gliding activity and Danger Areas in the airspace beneath the London TMA. Pilots are strongly advised to request a Lower Airspace Radar Service from Farnborough ATC when operating in the vicinity of Farnborough aerodrome. Pilots of Police and Ambulance helicopters operating within 20nm of Farnborough should contact Farnborough Radar on 134•355 during the notified hours.

**See VFR Arrival Chart overleaf**

# FARNBOROUGH VRPs and HELICOPTER VFR ARRIVAL/DEPARTURE ROUTES





## FARNBOROUGH VISUAL REFERENCE POINTS (VRPs)

VRP	Co-ordinates
<b>M3 Junction 3</b> .....	N51 21.35 W000 40.84
<b>Bagshot</b> .....	N51 20.95 W000 41.95
<b>M3 Junction 4</b> .....	N51 18.98 W000 45.42
<b>Fleet Pond</b> .....	N51 17.32 W000 49.48
<b>Hook Railway Station</b> .....	N51 16.77 W000 57.72
<b>Guildford</b> .....	N51 14.37 W000 35.10
<b>Tongham</b> .....	N51 13.70 W000 44.53
<b>Farnham Castle</b> .....	N51 13.12 W000 48.13
<b>Frensham Great Pond</b> (Off chart) .....	N51 09.27 W000 47.50
<b>Alton</b> (Off chart) .....	N51 09.12 W000 57.97
<b>Worplesdon Railway Station</b> .....	N51 17.27 W000 34.95

---

### Airspace Sharing Areas: (See green shaded areas on previous page)

**Odiham** - Intense VFR glider/motorglider activity takes place during daylight hours in the vicinity of RAF Odiham up to 4000ft AMSL, within the airspace sharing area.

**Blackbushe** - Operations at Blackbushe are carried out within a portion of Farnborough CTR1 by means of a Local Flying Area.

# EGCL

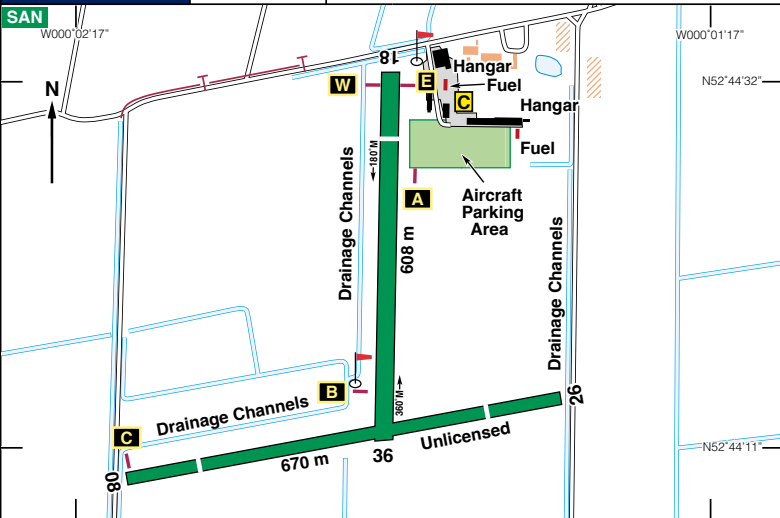
N52 44.37 W000 01.80

FENLAND

6ft AMSL

6 nm SE of Spalding. ///confusion.stance.caveman

c/s Fenland Radio 122.930 A/G



Rwy	Dim(m)	Surface	TORA(m)	LDA(m)	Lighting
18/36	608x30	Grass	18-608 36-608	18-519 36-608	† Thr Rwy LITAS 4.25°
08/26	670x18	Grass	Unlicensed		Nil
† Lighting by prior notice. Rwy 36 unlicensed for night flying.					IBn 'FE' Gn.

**Op hrs:** Wed-Sun 0900-1700 or SS whichever is earlier, and by arrangement.

**Landing Fee:** Microlights, Single Engine (inc Helicopters) £10.00; Twin Engines (Inc jet helicopter) £20.00. **Note:** No landing fee if fuel uplift is more than 100 litres.

**Hangarage:** Nil.

**Maintenance:** Nil.

**Customs:** Nil.

**Remarks:** Operated by Fenland Aero Club (Licensing) Ltd, Fenland Airfield, Holbeach St. Johns, Spalding, Lincs PE12 8RQ. Flying Instruction by Fenland Flying School, Tel: 01406 540461. PPR at night and to non radio aircraft. Visitors welcome.

**Circuits** at 1000ft aal, LH on Rwy 26 and 36, RH on Rwy 08 and 18.

Rwy 18/36 - all landing aircraft to vacate via the western taxiway only and exercise caution crossing Rwy 18 to park or for fuel. All taxiing aircraft are to use western taxiway as eastern side of Rwy 18/36 is unavailable for aircraft use.

**Noise Abatement Procedures overleaf.**

Departing helicopters should air taxi to Hold A before departing via runway-in-use.

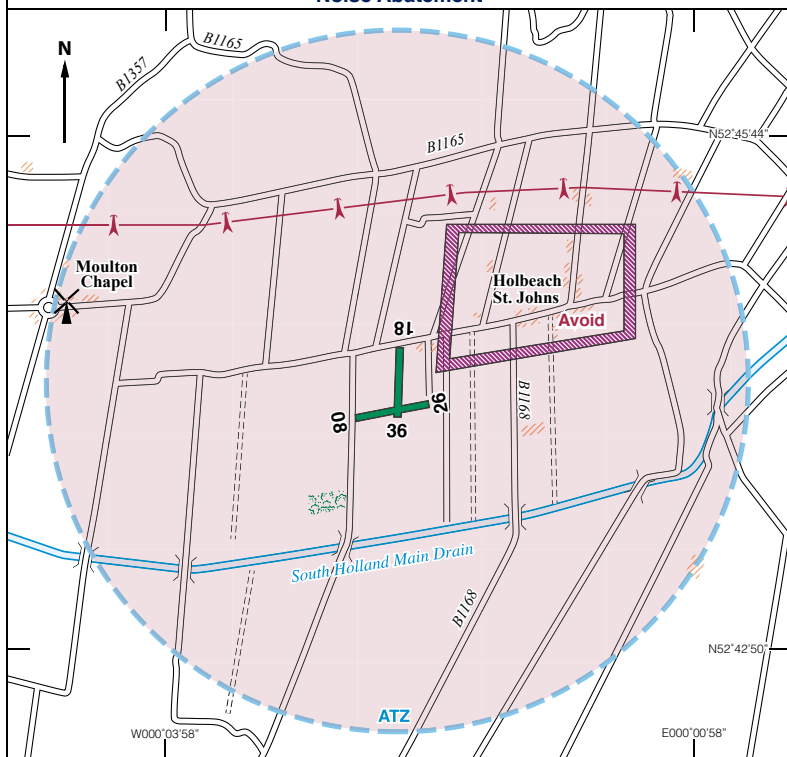
**Warnings:** Inset lighting on Rwy 18/36. Aircraft movements confined to marked grass runways & taxiways. Displaced thresholds on Rwy 18 and 26 due to public roads.

**Restaurant:** Licensed, Tues-Sun 0900-1600. Tel: 01406 540330.

**Fuel:** 100LL. Mon & Tue AD not licensed but AVGAS 100LL available. Jet A1 by PPR only.

**Tel:** 01406 540330 Clubhouse/A/G.  
**Email:** secretary@fenlandairfield.co.uk  
**Website:** www.fenlandairfield.co.uk

# EGCL FENLAND Noise Abatement



## Noise Abatement Procedures:

All traffic to avoid overflying the village of Holbeach St. Johns (1nm east of the A/D) below 1500ft QFE.

**Rwy 18 Arrivals:** To avoid overflying the farmhouse/riding centre W of the extended centre-line, on base leg fly on the northern side of the electricity cables 1800m North of the aerodrome until established on the extended centre-line.

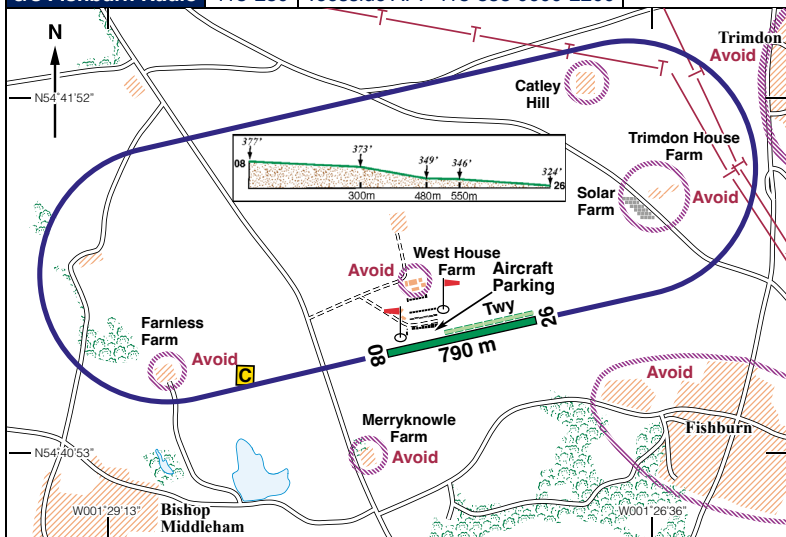
**Rwy 36 Departures:** To avoid overflying the farmhouse/riding centre W of the extended centre-line, after take off, track 5° right of the extended centre-line and maintain until passing the electricity cables 1800m N of the aerodrome.

N54 41.30 W001 27.85 **FISHBURN** 377ft AMSL

2.3 nm NNW of Sedgfield, Co. Durham. **POL 112-10 024 60-9**

2.5 nm N of Sedgfield Racecourse. ///demotion.politics.venues

**c/s Fishburn Radio** 118•280 **Teesside APP** 118•855 0600-2200



Rwy	Dim(m)	Surface	TORA(m)	LDA(m)	Lighting
-----	--------	---------	---------	--------	----------

08/26	790 x 30	Grass	Unlicensed		Nil
-------	----------	-------	------------	--	-----

**Op hrs:** 0800-2030 Summer. Dawn til dusk Winter.

**Landing Fee:** Singles £5.00, Twins £10.00. **Customs:** PNR.

**Hangarage:** Limited. **Maintenance:** Nil.

**Remarks:** Unlicensed airfield operated by Fishburn Airfield Ltd. Non-radio visiting aircraft must obtain PPR.

Airfield situated 3nm from the NNW boundary of Teesside International Airport CTR/CTA. Contact Teesside App 118•855.

Join circuit only from the North. No overhead joins. No deadside.

**Circuits** at 1000ft aal, LH on 08, RH on 26. Avoid overflying the villages of Trimdon, Fishburn and Bishop Middleham, and the noise sensitive areas shown above.

**Caution:** Runway has several distinct gradients. High Tension cables run across the approach to Rwy 26 at approx 2 miles out.

**Restaurant:** Aviator Café 0900-1700 daily, Tel: 0191 3770137.

**Accommodation:** 2 miles to south of airfield. Camping space available.

**Taxi:** Sedgfield Taxis Tel: 07858 455974 . Elliots Tel: 01429 881700.

**Fuel:** 100LL - 0900-1700 daily.  
Self service card payment terminal.

**Mob:** 07877 118280 (Control)  
**Mob:** 07747 795447 (David)  
**Email:** info@fishburnairfield.co.uk  
**Website:** www.fishburnairfield.co.uk

# EGBJ (GLO)

GLOUCESTERSHIRE

101ft AMSL

3.5 nm W of Cheltenham.

HON 113.65 217 33.4

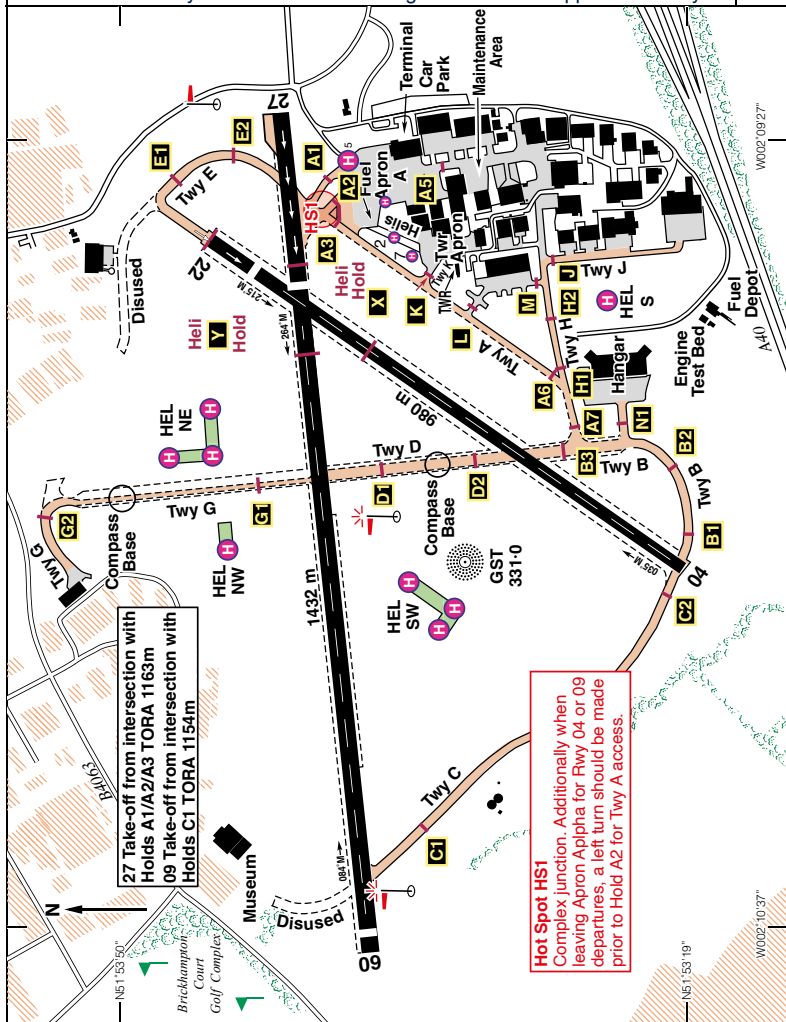
///human.motion.shells

c/s Gloster APP/RAD 128.555 TWR 122.905 RAD 120.980 (as directed by ATC)

VDF 128.555, 120.980 ATIS 127.480 ILS/DME Rwy 27 (264°M) 'I-GOS' 109.95

NDB 'GST' 331.0 (On A/D) - Warning: Interference may occur within 5 nm of Droitwich

and some ADFs may show occasional bearing fluctuations on approach to Rwy 27



# EGBJ (GLO)

N51 53.65 W002 10.03		GLOUCESTERSHIRE			101ft AMSL
Rwy	Dim(m)	Surface	TORA(m)	LDA(m)	Lighting
04/22	980x23	Asphalt	04-980 22-980	04-980 22-891	APAPI 4.5° APAPI 3.5°
09/27	1432x30	Asphalt	09-1271 27-1317	09-1241 27-1147	Ap Thr Rwy PAPI 3° Ap Thr Rwy PAPI 3.5°

**Op hrs:** PPR. Mon-Fri 0830-1930 all year, Sat & Sun 0900-1800 Winter, 0900-1930 Summer. Extensions available on request, subject to surcharge. PPR via Ops/ATC.

**Landing Fee:** From £8.50 + VAT. Discounted with fuel uplift, see website for details.

**Hangarage/Maintenance:** Available.

**Customs:** A/D hours.

**Remarks:** Operated by Gloucestershire Airport Ltd., Cheltenham, Gloucestershire, GL51 6SR. **X:** @GlosAirport. AD is PPR, commanders to book in via Ops/ATC.

**PPE (high visibility jackets) must be worn by all pilots and personnel airside.** AD is PPR for Instrument training, Tel 01452 857700 Ext 229.

VFR acft should obtain ATIS and call at least 5 mins before ETA.

Fixed wing aircraft will normally be instructed to make a Direct Join. Direct joins may be issued with a vertical restriction e.g. not below 1500ft QFE, to facilitate circuit integration. Such a restriction does not absolve pilots from the requirement to remain in VMC at all times. Inbound flights should avoid Instrument Approach let-down areas and departure climb-outs at all times.

Helicopter standardised phraseology and procedures are established.

The standardised phrases are assigned the following meaning:

**‘Standard Helicopter Arrival’:** Enter ATZ not above 750ft QFE, track inbound below downwind leg, approaching as required to designated HTA or runway, remaining clear of fixed-wing final approach and climb out tracks.

**‘Standard Helicopter Departure’:** Take-off into wind or as required, remaining clear of fixed-wing runway in use, turning to depart circuit at right angles to runway in use (i.e. beneath/downwind leg), not above 750ft QFE, before departing ATZ on required track.

Rwy strips and ILS critical areas delineated by mown grass. Helicopters must not infringe these areas. All pilots not filing flight plans are required to book-out at Flight Briefing or by telephone to ATC, stating estimated elapsed flight time, fuel endurance and POB.

**Circuits:** Fixed wing at 1000ft QFE, RH on Rwy 22, 27, LH on Rwy 04 & 09.

Helicopter circuit operates up to maximum of 750ft QFE within the fixed wing circuit.

**Noise Abatement: Departures:** Rwy 04 - No left turns before Staverton village (1.1 DME).

Rwy 22 - No left turns permitted until passing Chosen Hill (1.2 DME).

Rwy 27 - Non-jet acft (including circuit acft) are not to execute right turns until passing west of the golf course (0.5 DME(27) and should not route over Down Hatherley.

Jet acft are to climb straight ahead through 1400ft QNH before executing any turns.

**Handling:** Handling by Weston Aviation, Tel: 01452 933698. Gloucestershire Airport Ops, Tel: 01452 857700, briefing@gloucestershireairport.co.uk.

The Little Jet Company, Tel: 01452 857606; info@thelittlejetcompany.com.

Flight Partner, Tel: 01452 856222; ops@flightpartner.co.uk.

*continued*

**Warnings:** Intense instrument training takes place in all weather conditions. Pilots should avoid 09/27 final approach tracks unless in contact with ATC. Runway incursion Hazard, Holding Point A2 has a wide mouth, runway guard lights are displayed whenever Rwy 09/27 is in use, irrespective of weather conditions. Pilots must exercise extreme caution when taxiing in this area. Helicopters operate parallel to fixed wing circuits up to 750ft QFE. A public road runs through the undershoot of Rwy 22 & 27. Pilots should not approach below the PAPI glidepath. Bird hazard, flocks of gulls may be encountered crossing airfield approaches particularly at dawn and dusk. Rwy 04 prone to standing water after prolonged rain. Microlight flying takes place at Over Farm (4.3nm SW of AD) up to 1500ft AGL. Mixed fixed wing and rotary operations can be complex. To avoid the risk of runway incursions all operators need to ensure they are fully aware of procedures, routes and listen carefully to comply with ATC instructions.

**Restaurant:** Aviator restaurant & bar on airfield, refreshments at 'Flying Shack'.

**Fuel:** 100LL, Jet A1 (All Jet-A1 pre mixed with AL48). Diners, Visa, Multi Service.

**Tel:** 01452 857700 Ext 223 Ops/ATC.  
**Website:** [www.gloucestershireairport.co.uk](http://www.gloucestershireairport.co.uk)

## LEEDS EAST AIRPORT

29ft AMSL

**OTR 113.90 283 39.7**

**POL 112·10 080 32·8**

W001°12'30"

N

Vehicle Parking

Disused

Fuel (Jet A1)

Hangar

TWR

Hangar

Fuel (Avgas)

Twy A

Twy B

Twy E

A1

A2

A3

B1

B2

B3

E1

E2

F1

H

H

Disused

Disused

Disused

1826 m

084 M

06

24

234 M

N53°49'49"

W001°10'54"

N53°50'33"

W001°12'30"

N53°50'33"

Rwy 06 from intersection with F1 - TORA 1184 m  
Rwy 06 from intersection with disused Rwy - TORA 921 m  
Rwy 24 from intersection with disused Rwy - TORA 810 m

Rwy	Dim(m)	Surface	TORA(m)	LDA(m)	Lighting
06/24	1826x46	Asphalt/ Concrete	06-1799 24-1711	06-1711 24-1711	Ap Thr Rwy PAPI 3° Ap Thr Rwy PAPI 3°

**Op hrs:** PPR. 01 Apr-31 Oct 0700-1700z. 01 Nov-31 Mar 0800-1800L. **ATZ: Op Hrs.**

**Landing Fee:** See [www.leedseairport.co.uk](http://www.leedseairport.co.uk)     **Customs:** On request.

**Hangarage:** On request. **Maintenance:** Nil.

**Remarks:** Operated by Makins Enterprises. Not available to acft unable to communicate with the Tower. A public road crosses final approach to Rwy 06.

**Circuits:** Fixed wing at 1000ft QFE, all to the north.

Helicopters at 700ft QNH to the south of the Rwy staying north of Sherburn ATZ. No deadside or overhead joins due to the conjoined ATZ with Sherburn-in-Elmet 3nm to the SW, join via VRPs. RFFS: FIRE CAT 2 unless otherwise stated (maybe downgraded to FIRE CAT 1 through NOTAM).

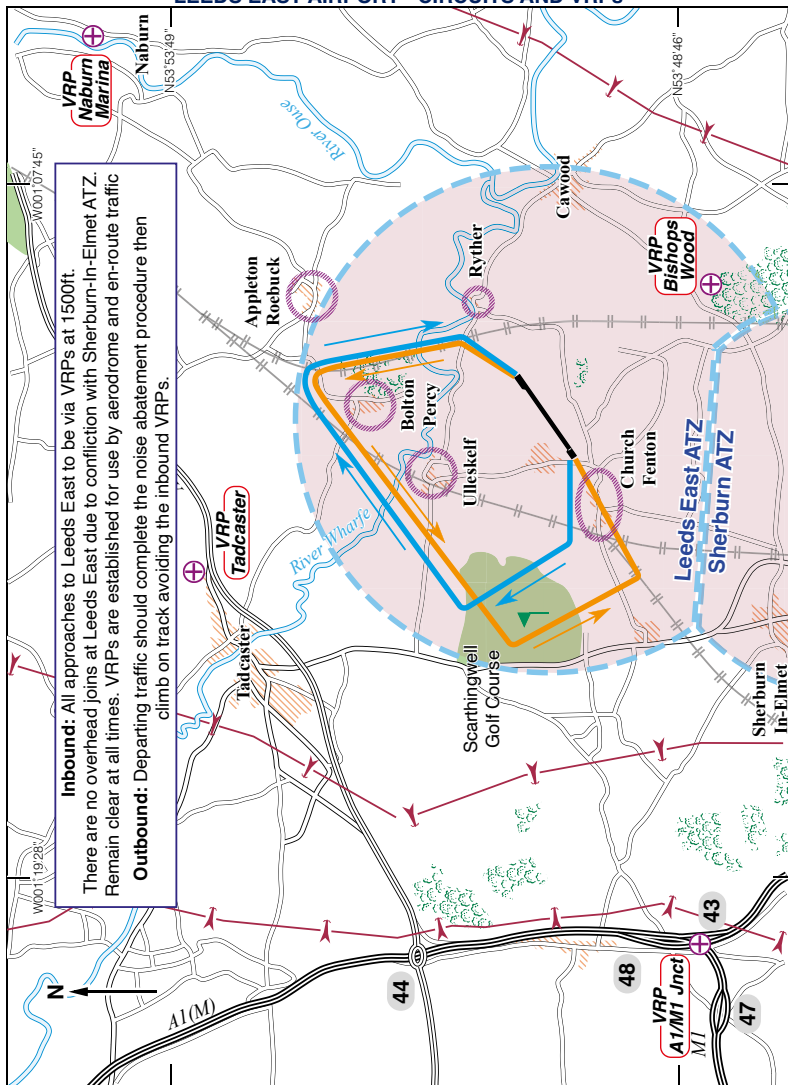
Avoid overflying Church Fenton, Ulleskelf, Bolton Percy, Appleton Roebuck & Ryther villages, also aviation sites at Rufforth, Pocklington & Burn Glider sites.

**Fuel:** Self serve - Jet A1, F34 & Avgas.  
Rotors running available. Airport closes at 1800(L) but OOH refuelling available.

**Tel:** 01937 534197 Fuel/Ops  
**Email:** ops@leedseastairport.co.uk (PPR)  
**Website:** www.leedseastairport.co.uk



# LEEDS EAST AIRPORT - CIRCUITS AND VRPs



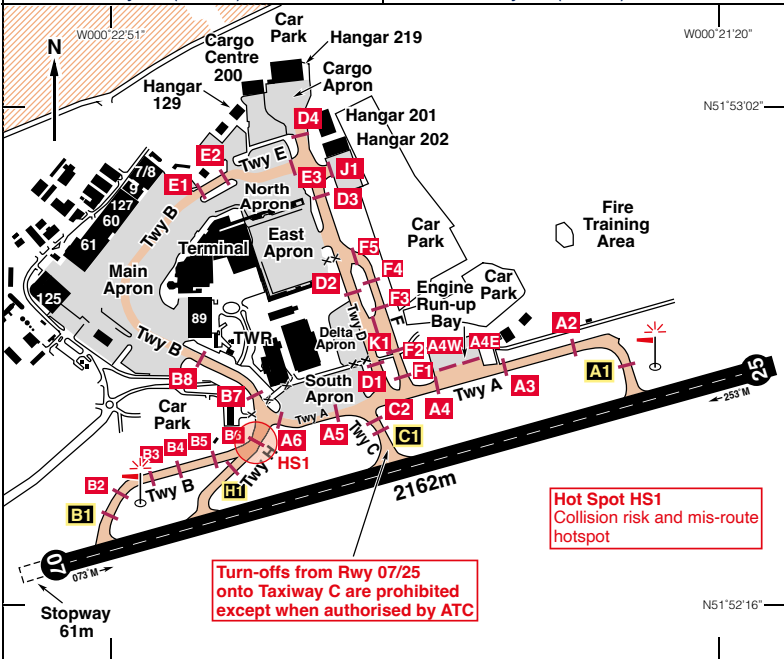
## VRP

## Co-ordinates

Bishop Wood .....	N53 48.55 W001 09.52
M1/A1(M) Junction .....	N53 48.86 W001 20.43
Naburn Marina .....	N53 54.56 W001 05.38
Tadcaster .....	N53 53.43 W001 14.10

# EGGW (LTN)

N51 52.48 W000 22.10	<b>LONDON Luton</b>			527ft AMSL
1.5 nm E of Luton. ///metro.share.settle				
Luton APP c/s Radar 129•550, 132•050*		RAD c/s Director 128•750*		
TWR 132•555, 126•730*	GND 121•755 (0600-2300)		Delivery 121•885*	
ATIS 120•580 c/s Arr/Dep Info. ATIS also available via Tel: 01582 395225				
NDB 'LUT' 345•0 (254°M/3•94 nm to Thr 25)		*When directed by ATC		
ILS/DME Rwy 07 (074°M) 'I-LTN' 109•15		ILS/DME Rwy 25 (254°M) 'I-LJ' 109•15		



Rwy	Dim(m)	Surface	TORA(m)	LDA(m)	Lighting
07/25	2162x46	Asphalt	07-2162† 25-2162†	07-2162 25-2080	Ap Thr Rwy RCL PAPI Ap Thr Rwy RCL PAPI
† Take-off:		Rwy 07 from intersection with Twy B			TORA 1982 m
		Rwy 07 from intersection with Twy H			TORA 1688 m
		Rwy 07 from intersection with Twy C			TORA 1132 m
		Rwy 25 from intersection with Twy C			TORA 1053 m
		Rwy 25 from intersection with Twy A			TORA 1771 m

<b>Op hrs:</b> H24. PPR.	<b>Customs:</b> H24.
<b>Landing Fee:</b> On application.	
<b>Hangarage:</b> By arrangement with Signature/Harrods/RSS. <b>Maintenance:</b> Available.	

**Remarks:** Operated by London Luton Airport Operations Ltd., Navigation House, Airport Way, Luton, Beds LU2 9LY.

Flights within the Luton CTR/CTA are governed by the regulations applicable to Class 'D' Controlled Airspace.

SVFR/VFR Flights, Entry/Exit Lanes and VRPs – see overleaf.

Luton CTR/CTA Chart - see page 445.

Pilots operating in the vicinity of, but intending on remaining outside the Luton CAS and maintaining a listening watch on Luton Radar frequency 129.550 are encouraged to select SSR code 0013. Selection of the code does not imply the provision of any form of Air Traffic Service. See page 32.

All flights operating at London (Luton) Airport require acceptance from Airport Co-ordination Ltd., Tel: 020 8546 0614, Fax: 020 8546 0691.

Non-Radio aircraft prohibited. Airport available only to qualified pilots.

High visibility clothing required for all apron activities.

Do not vacate runway via Twy C unless specifically authorised by ATC.

Booking out over the RTF not accepted. Book out with ATC, Tel: 01582 395029 or 01582 395355.

Unmanned Aerial Vehicle (UAV) activity takes place during daylight hours, operating on the south western border of Harpenden, adjacent to the M1 between Junction 9 (VRP) and Junction 8 (VRP). Pilots should be aware that UAVs up to 7 kg may be operating in these areas below altitude 1000ft.

Radio controlled model acft flying and Unmanned Aerial Vehicle (UAV) activity takes place during daylight hours, at Harris Lane Offley, 0.5nm SE of Offley VRP. Pilots should be aware that UAVs up to 7 kg may be operating in these areas below altitude 1000ft.

All General Aviation traffic must use a handling agent and must be booked prior to arrival.

### Handling Agents:

Harrods Business Aviation Ltd Tel: 01582 589317, Radio 131.450;

Signature Flight Support Terminal 1 Tel: 01582 724182, Radio 130.175;

Signature Flight Support Terminal 2 Tel: 01582 692330, Radio 130.650;

Swissport Tel: 01582 700900, Radio 130.600;

Menzies Tel: 07985 891605, Radio 131.400.

GH London 01582 395291, Radio 131.935.

**Restaurant:** Available in the Terminals.

**Car Hire:** Avis. Tel: 01582-736537. Europcar Tel: 01582 413438.

Alamo. Tel: 01582 486414.

**Fuel:** Jet A1.

Diners. Multi Service.

**Tel:** 01582 405100 Switchboard

**Tel:** 01582 395229 NATS Ltd

**Tel:** 01582 395029 ATC Watch Manager

**Tel:** 01582 395225 ATIS

**Tel:** 01582 395525 LLAO Airport Ops

## LONDON Luton

### Entry/Exit Lanes

Entry/Exit Lanes are established to permit aircraft to operate to and from LONDON Luton Airport in IMC but not under IFR. North Lane via PIRTON VRP and Offley VRP, South Lane via M1 Junc 8 VRP and Hyde VRP. Both lanes are 1.5 nm wide and use of the lanes is subject to the following conditions:

- (a) Special VFR clearance must be obtained from Luton ATC.
- (b) Aircraft using the lanes are to remain clear of cloud and in sight of the surface, not above 1500ft (Luton QNH).
- (c) Minimum flight visibility of 3km.
- (d) Pilots are responsible for their own separation from other aircraft and are also responsible for maintaining adequate ground clearance

### Visual Reference Points (VRPs)

#### VRP

#### Co-ordinates

<b>A1 (M) Junction 4</b> .....	N51 46.75 W000 13.47
<b>Kimpton Hall</b> .....	N51 50.75 W000 17.80
<b>M1 Junction 8</b> .....	N51 45.37 W000 24.97
<b>M1 Junction 9</b> .....	N51 49.22 W000 25.08
<b>Offley</b> .....	N51 56.02 W000 20.50
<b>Hyde</b> .....	N51 50.65 W000 21.97
<b>Pirton</b> .....	N51 58.30 W000 19.90

### VFR Helicopters

Inbound, outbound and transiting VFR helicopter traffic will normally be required to route via tracks joining the following VRPs to minimise noise and to ensure integration with other traffic:

From/To the North:

Pirton - Offley.

From/To the South and Southeast:

A1(M) Junction 4 - Kimpton Hall - Hyde

From/To the South and Southwest:

M1 Junction 8 - M1 Junction 9 - Hyde.

From/To London Stansted:

Puckeridge - Kimpton Hall - Hyde.

- (a) Expect VFR clearance not above 1500ft amsl, however, pilots are to requested to maintain the highest possible level in accordance with the clearance to minimise noise.
- (b) Outbound helicopters should identify their preferred routing when booking out.

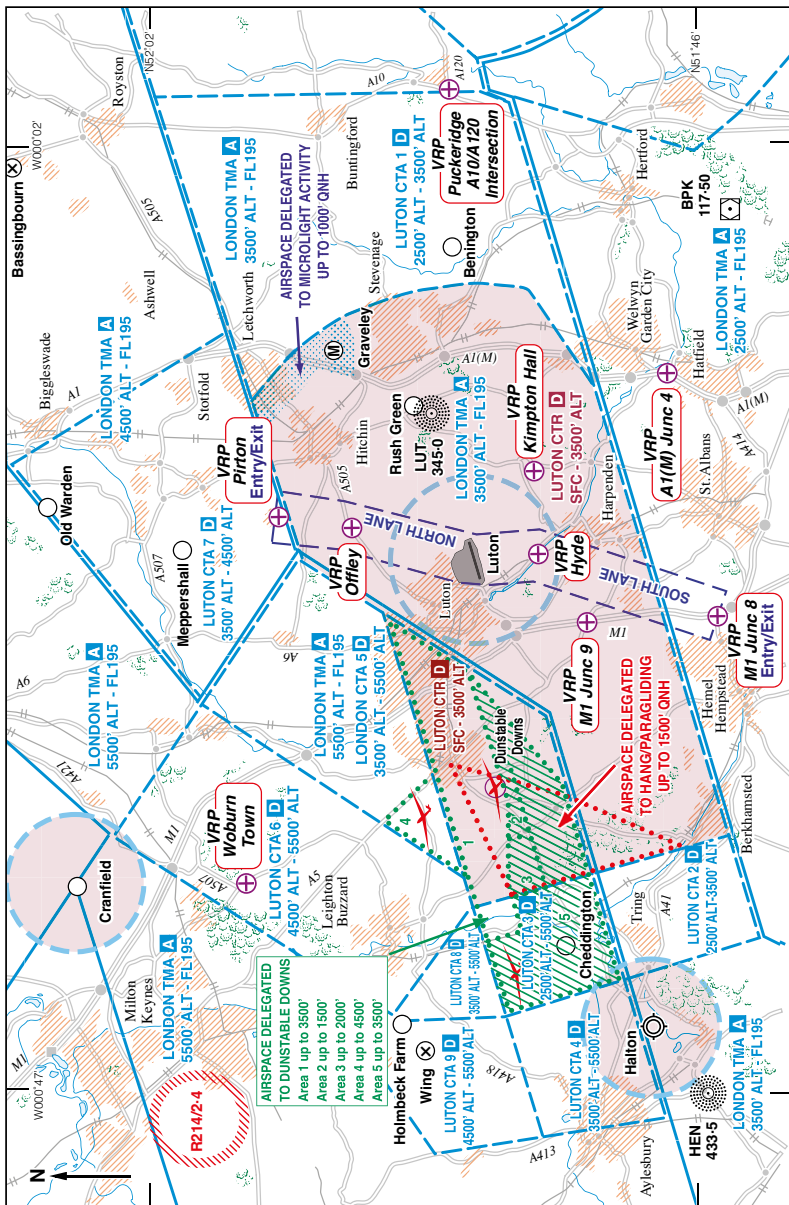
### VFR Flights

Pilots should anticipate clearance and routing via Entry/exit Lanes and VRPs.

Pilots of fixed-wing VFR and Special VFR aircraft inbound from the north may be instructed by ATC to route via or hold at Offley.

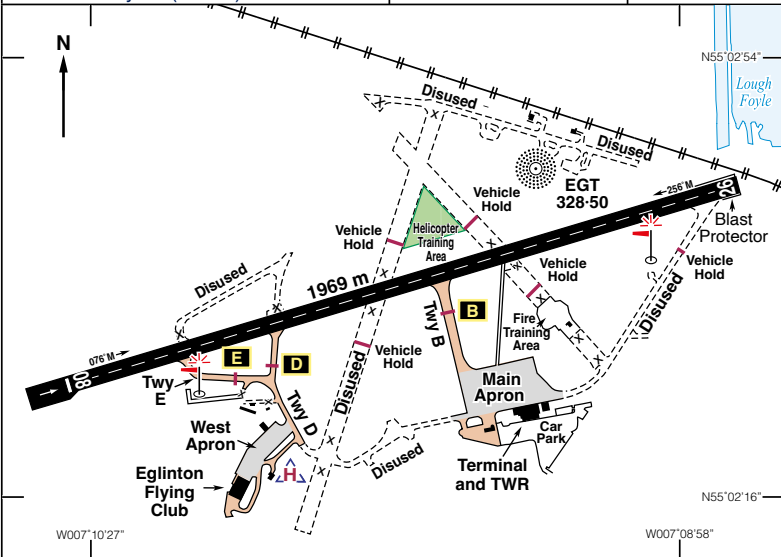
VFR aircraft operating into or out of Luton Airport should file a flight plan in advance. In exceptional circumstances 'booking out' may be made with ATC by telephone on 01582 395029; 'booking out' of flights by RTF will not be accepted.

## LONDON Luton CTR/CTA ENTRY/EXIT LANES and VRPs



# EGAE (LDY)

N55 02.57 W007 09.72	<b>LONDONDERRY/Eglinton</b>	23ft AMSL
7 nm ENE of Londonderry. <i>///spoiler.mouths.pheasants</i>		
<b>c/s Eglinton</b>	APP/VDF 123+630	TWR 134+155 ATIS 119+380
NDB 'EGT' 328+50 (on A/D)	ILS/DME Rwy 08 (073°M)	'I EGN' 108+30
ILS/DME Rwy 26 (256°M)	'I EGT' 108+30	ATIS Tel: 028 7125 3131



Rwy	Dim(m)	Surface	TORA(m)	LDA(m)	Lighting
08/26	1969x45	Asphalt	08-1932 26-1969	08-1847 26-1969	Ap Thr Rwy RCL PAPI 3° Ap Thr Rwy RCL PAPI 3° Abn/Wh
<b>Take-Off:</b> Rwy 08 - from intersection with Twy E - TORA 1510. Rwy 08 - from intersection with Twy D - TORA 1260. Rwy 08 - from intersection with Twy B - TORA 804. Rwy 26 - from intersection with Twy B - TORA 1151.					

**Op hrs:** Strictly PPR by phone. Mon 0625-1900;  
Tue-Thur 0625-0730, 0830-1900, 2000-2200; Fri 0625-1900, 2000-2200;  
Sat 0625-0730, 0900-1600, 1700-1800; Sun 0855-0930, 1200-1845, 1930-2200.  
See NOTAMS for updates.

**Landing Fee:** Private up to 3 tonnes, Single £20.90; Twin £41.80+VAT (Cash/Cards only).

**Customs/Immigration:** By arrangement 0700-2200.

**Hangarage:** Available. **Maintenance:** Troughton Engineering.

**Remarks:** Operated by City of Derry Airport Operations Ltd, Airport Road,  
Co Londonderry BT47 3GY. Non-radio aircraft PPR from ATC.

*continued*

**Remarks: (continued)**

Aircraft departing/arriving from/to destinations outside of Northern Ireland are required to use the main terminal building for Customs, Immigration and Special Branch, as appropriate.

Aircraft must have third party liability insurance cover.

High visibility clothing mandatory for all ramp activities.

Departing and arriving aircraft, on first contact with Eglinton ATC must state, ATIS code letter, QNH received and maintain a listening watch.

**Circuit directions and height:**

Rwy 08 - 1000ft for LH and 1200ft for RH;

Rwy 26 - 1200ft for LH and 1000ft for RH.

At night, the circuit heights will be raised to 1500ft aal.

Training is not permitted between 0000-0700.

**Noise Abatement Procedures:**

All pilots should arrange their flight so as to minimise noise disturbance.

Pilots should not carry out manoeuvres which attract attention to their aircraft;

Landing aircraft shall follow a descent path that will not result in it being below the visual approach path as indicated by the PAPI.

**Warnings:**

Pilots are reminded of the close proximity of Ballykelly disused airfield 5 nm ENE of this aerodrome. Ballykelly is close to the extended centreline to Rwy 26.

Positively identify Londonderry/Eglinton before committing the aircraft to landing.

Congregations of sea-birds in the approach area to Rwy 26 (take-off area for Rwy 08).

Presence of large species Whooper Swans in the vicinity of the aerodrome Oct to Apr mainly flying at approx 25 -100ft agl.

Single engined aircraft should avoid overflying factory complex 2.5 nm W of airfield below 1500ft.

GA arriving/departing aircraft may experience delays of up to 5 minutes where movements conflict with the passage of a train.

High ground 1300ft amsl, 120°T-240°T, 4.4 nm from ARP.

**Fuel:** 100LL, Jet A1.

Tel: 028 7181 3338/3336

Mon 0530-1815;

Tue-Fri 0530-1800;

Sat 0530-1545;

Sun 0800-2045;

and by arrangement.

**Tel:** 028 7181 0784 Ext 201 Switchboard

**Tel:** 028 7181 3300 Admin

**Tel:** 028 7181 3322 Security

**Tel:** 028 7181 3314 ATC

**Tel:** 028 7181 3336 Ground Handling & PPR

**Email:** corporate.aviation@cityofderryairport.com

**Email:** ground.handling@cityofderryairport.com

**Website:** www.cityofderryairport.com

**LONDONDERRY/Eglinton  
VISUAL REFERENCE POINTS (VRPs)**

**Visual Reference Points**

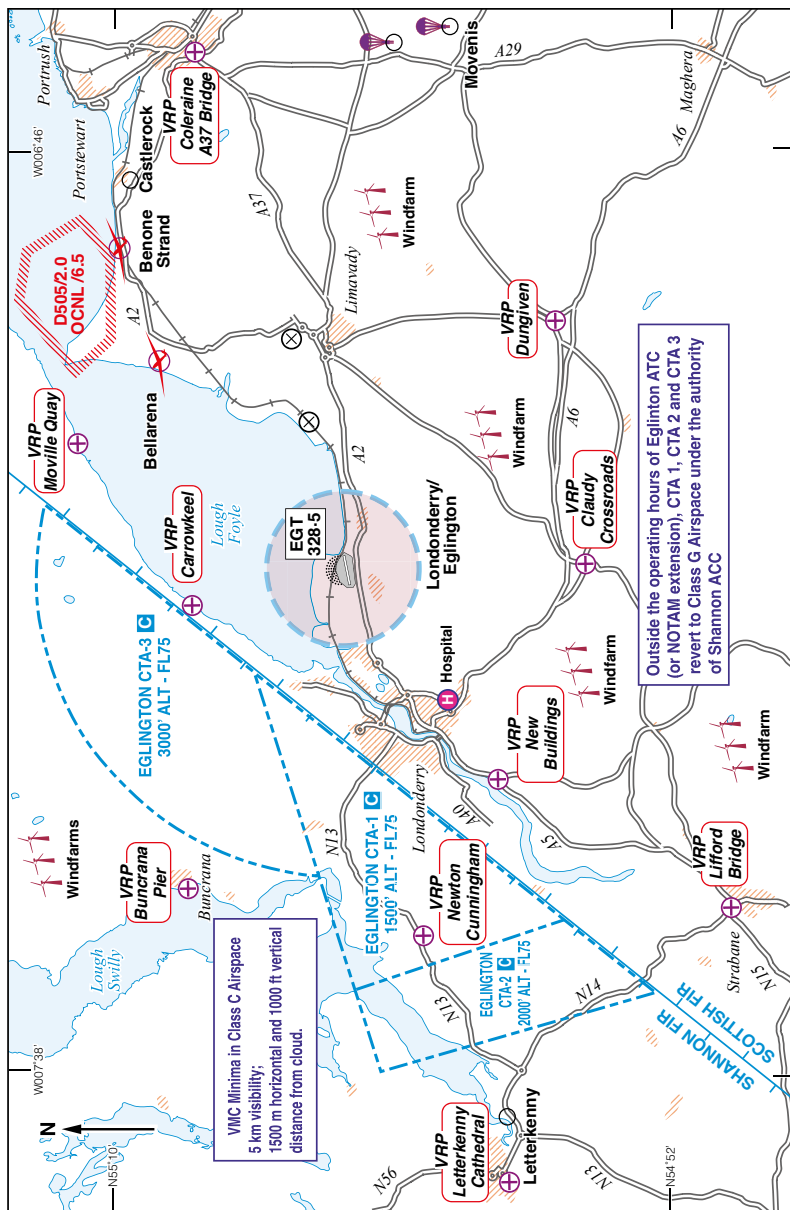
<b>Buncrana Pier</b> .....	N55 07.60	W007 27.85
<b>Carrowkeel</b> .....	N55 07.50	W007 11.70
<b>Claudy Crossroads</b> .....	N54 54.70	W007 09.20
<b>Coleraine A37 Bridge</b> .....	N55 07.40	W006 40.18
<b>Dungiven</b> .....	N54 55.70	W006 55.50
<b>Letterkenny Cathedral</b> .....	N54 57.03	W007 44.40
<b>Lifford Bridge</b> .....	N54 49.88	W007 28.85
<b>Moville Quay</b> .....	N55 11.18	W007 02.52
<b>New Buildings</b> .....	N54 57.50	W007 21.50
<b>Newton Cunningham</b> .....	N54 59.90	W007 30.40

**Note:** VFR flights must be prepared to route via VRPs and to route clear of instrument approaches if so instructed by ATC. Inbound and outbound aircraft may be requested to follow the following routes:

- i. Dungiven - Claudy Crossroads - Londonderry (Eglinton);
- ii. Moville Quay - Carrowkeel - Londonderry (Eglinton).



# LONDONDERRY/Eglinton CTA and VRPs



EGMD

LYDD

13ft AMSL

N50 57.37 E000 56.35

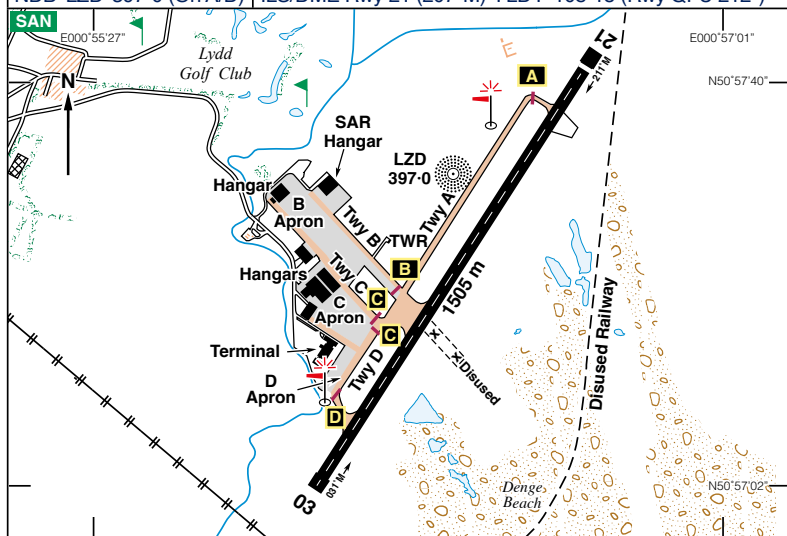
1.2 nm NE of Lydd (Kent).

12 nm S of Ashford. ///majority.guitars.placidly

c/s Lydd APP/VDF 120•705 TWR 119•380 (when directed by ATC) ATIS 129•230

SUA AIS for EG D044 and EG D141 available on 120•705 and ATIS 129•230

NDB 'LZD' 397•0 (On A/D) ILS/DME Rwy 21 (207°M) '1 LDY' 108•15 (Rwy QFU 212°)



Rwy	Dim(m)	Surface	TORA(m)	LDA(m)	Lighting
03/21	1505x32	Asphalt	03-1470 21-1505	03-1470 21-1470	Ap Thr Rwy PAPI 3° Ap Thr Rwy PAPI 3.5° ABn Wh

**Op hrs:** PPR. 0830-1900 daily, extensions by arrangement.**Landing Fee:** MTOW 0-1500kg £23; 1501-2500kg £34; 2501-4000kg £65.

T&amp;G 0-1500kg £9; 1501-2500kg £10.50; 2501-4000kg £17.

Instrument Approach Training 0-2500kg; £23 for 2501-4000kg £29.

All charges are excluding VAT.

**Customs:** As Op hrs.**Hangarage:** By arrangement.**Maintenance:** Nil.**Remarks:** Operated by London Ashford Airport Ltd., Lydd Airport, Lydd, Romney Marsh, Kent TN29 9QL. Non-radio aircraft prohibited.

All movements strictly PPR by telephone to ATC 01797 320881 or 01797 322417.

Electronic GAR forms maybe processed via the pilots information section of the Lydd airport website.

High visibility clothing mandatory on the apron and manoeuvring area.

continued

**Remarks (continued):****Joining Procedure for VFR Traffic:**

Inbound VFR aircraft should make their initial call for joining instructions before reaching at Rye (9 nm W of Lydd), Tenterden (15 nm NW), Ashford (12 nm N), Folkestone (12 nm NE) or 10 nm to Lydd if approaching from the sea.

Lydd VFR transponder code 7066 should be selected if possible.

Note: Lydd is not radar equipped and is unable to provide any form of surveillance.

The transponder code is to assist neighbouring ATS Units.

All inbound aircraft are requested to report at 4 nm to Lydd. Pilots are responsible for their own separation from EG D141, D044 and R063.

Aircraft joining via Rye, Appledore, Tenterden, Ashford and those routing inland from Folkestone will, unless otherwise instructed, join overhead at 1500ft QNH, descend crosswind, and turn downwind at 1000ft QNH. **Do not descend deadside.**

Aircraft inbound from the East, Southeast or South, having made the 4 mile report, can anticipate instructions to join the circuit downwind or base leg, subject to traffic.

**Circuits:** Circuit height 1000ft QNH. Light aircraft normally LH on Rwy 21, RH on 03. Aircraft above 5700kg MTOW RH on Rwy 21, LH on 03.

**Take-Offs:**

Rwy 03 - Climb straight ahead to at least 500ft or passing the upwind end of the runway, whichever is later, before turning left or right as instructed by ATC.

Rwy 21 - Climb straight ahead to at least 500ft or passing the upwind end of the runway, whichever is later, before turning left or right.

Aircraft turning left are to remain at least 1.5 nm clear of Dungeness Power Station.

Caution - remain clear of Lydd Firing Ranges D044, if active.

All departures will carry out power checks at Holds B or C as directed.

Taxiway A and D available to aircraft below 5700kg and wingspan 15m.

All helicopters shall use Rwy 03/21 for take-offs/landings.

Passenger aircraft above 4 tonnes subject to handling through FAL Aviation Ltd.,

Tel: 01797 322400, Fax: 01797 322419, Email: FAL@lydd-airport.co.uk,

Radio: FAL Ops 131.705.

**Caution:** SAR Helicopters and UAS operations may take place when AD is closed.

Remain clear of Lydd Ranges D044 and Hythe Ranges D141.

SUAAIS available on 120.705 or ATIS on 129.230.

**Restaurant:** Snacks and refreshments are available at Customer Services.

**Fuel:** 100LL, Jet A1.

Duty free Avgas available for overseas flights.

**Tel:** 01797 320881 ATC.

**Tel:** 01797 322400 Switchboard.

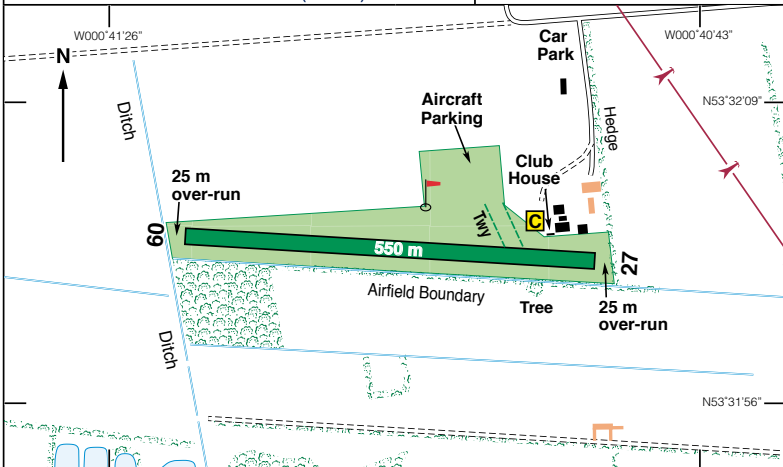
**Tel:** 01797 322422 Met.

**Fax:** 01797 322419 Admin.

**Email:** info@lydd-airport.co.uk

**Website:** www.lydd-airport.co.uk

N53 32.09 W000 40.85	<b>NORTH MOOR (Scunthorpe)</b>	22ft AMSL
3.5 nm SSW of Scunthorpe. <a href="#">///skips.confetti.mushroom</a>	<b>OTR 113-90 248 22-8</b>	
<b>c/s North Moor Radio</b>	<b>119•280 A/G</b>	
<b>c/s Humberside Radar 119•130 (LARS) 0630-2115</b>		



Rwy	Dim(m)	Surface	TORA(m)	LDA(m)	Lighting
09/27	550x20	Grass	Unlicensed		Nil

**Op hrs:** PPR by Telephone. 0730-1930 or SS whichever earlier.

**Landing Fee:** Nil. **Customs:** Nil.

**Hangarage:** Nil. **Maintenance:** Nil.

**Remarks:** North Moor Airfield – Status Update North Moor Aero Club and Model Aircraft Club have ceased operations permanently. The site is now designated North Moor Private Airfield , owned and managed by Darren and Lisa Haley. Permitted operations are strictly limited to: • Emergency landings • Police, military, or air ambulance flights • Pre-arranged visits only (contact Darren on 07925 462481) Airspace Advisory This remains an active private airfield. Although no Flight Restriction Zone (FRZ) is established, Civil Aviation Authority rules prohibit any flight—manned, drone, or model—that endangers aircraft, particularly during take-off or landing. Overflights are strongly discouraged below 500 ft AGL. All operators must maintain continuous visual line of sight and avoid conflict with airfield traffic. Your responsible airmanship ensures continued safe operations.  
Thank you for your cooperation.

**Warnings:** Power cables cross final approach to Rwy 27, 270m from threshold. A 16ft deep ditch runs across the airfield boundary at Rwy 09, marked by orange and white markers.  
Avoid overflying the village of Messingham 1 nm to the east of the airfield.  
Avoid Messingham Zoo to the south of the airfield.  
Pilots please be aware of wind sheer at the approaches.

**Accommodation/Restaurant:** B&B, pub lunches/bar meals available in Messingham.

**Fuel:** Nil. **Mob:** 07925 462481

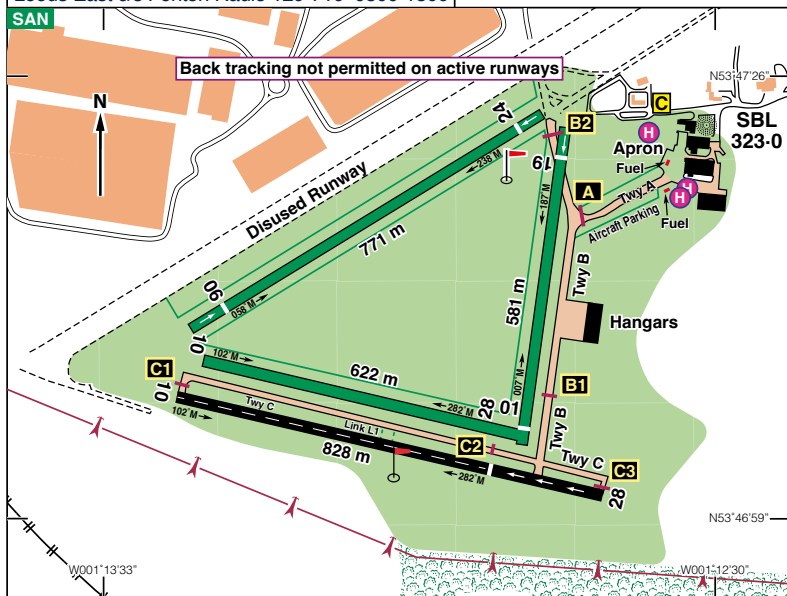
# EGCJ

N53 47.03 W001 13.04 **SHERBURN IN ELMET** 26ft AMSL

5.5 nm W of Selby, Yorks. [situation.saints.geology](http://situation.saints.geology) **POL 112-10 086 31-6**

**c/s Sherburn Radio** 122-610 A/G **NDB 'SBL' 323-0 (On A/D)**

Leeds East c/s Fenton Radio 120-710 0800-1800



Rwy	Dim(m)	Surface	TORA(m)	LDA(m)	Lighting
01/19	581x21	Grass	01-553 19-553	01-553 19-525	Nil Nil
06/24	771x21	Grass	06-723 24-696	06-676 24-703	Nil Nil
10/28	828x18	Tarmac	10-612 28-799	10-612 28-612	Thr Rwy APAPI 3.5° Thr Rwy APAPI 3.5°
10/28	622x21	Grass	10-622 28-622	10-622 28-622	Nil Nil

**Op hrs:** 0900-SS. (0900-1930).

**Landing Fee:** Single £12.00, Multi £22.00. Nil with minimum fuel uplift (50 Ltr).

**Customs:** 24 hrs PNR.

**Hangarage:** Limited. **Maintenance:** Sherburn Engineering Ltd. (Mon-Fri).

**Remarks:** Operated by Sherburn Aero Club Ltd. The Aerodrome, New Lennerton Lane, Sherburn-in-Elmet, Nr Leeds, LS25 6JE.

**Restaurant:** Club facilities open all day.

**Fuel:** 100LL, Jet A1, UL91.

**Tel:** 01977 682674.

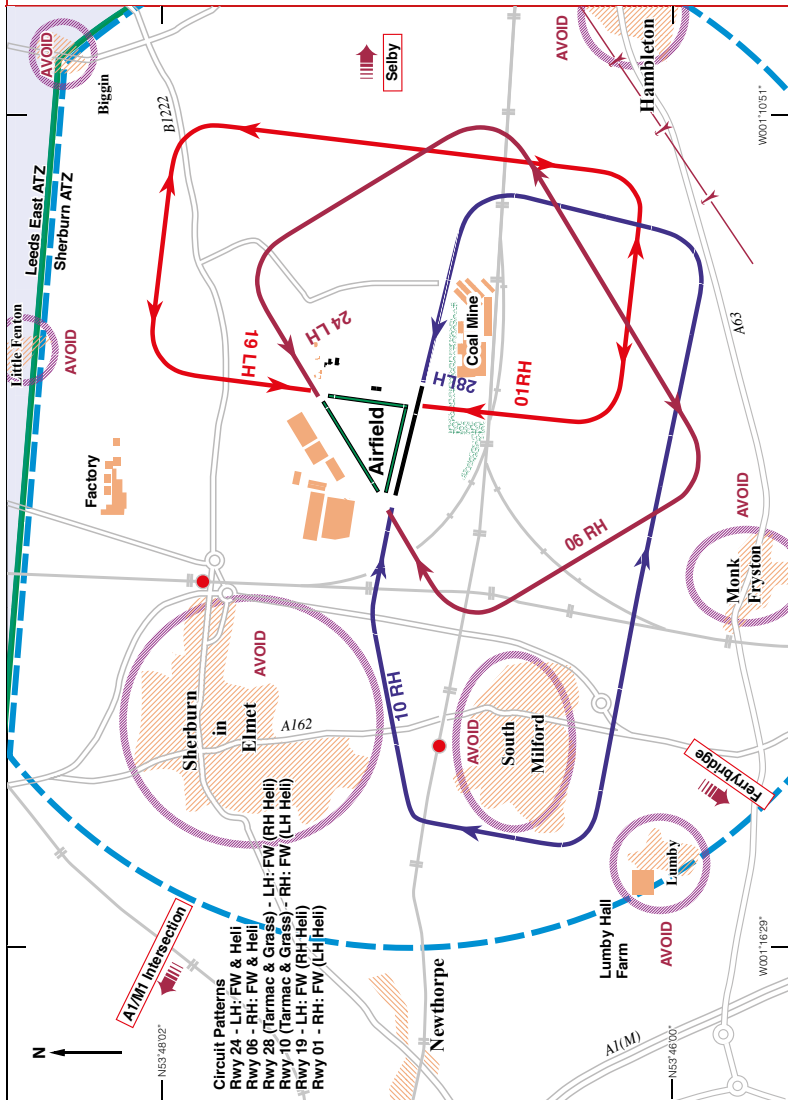
**Email:** [flightdesk@sherburnaeroclub.com](mailto:flightdesk@sherburnaeroclub.com)

**Website:** [www.sherburnaeroclub.com](http://www.sherburnaeroclub.com)

## SHERBURN IN ELMET - NOISE ABATEMENT AND CIRCUITS

**Caution:** Power cables 32ft aal cross final approach to Rwy 01, 258m from Thld.

**Warnings:** Mast, 134ft amsl (111ft agl) 830m to the east and south of Rwy 28 Thld and left of the extended runway approach centreline.



# EGPO

## STORNOWAY

26ft AMSL

N58 12.93 W006 19.87

2 nm E of Stornoway.

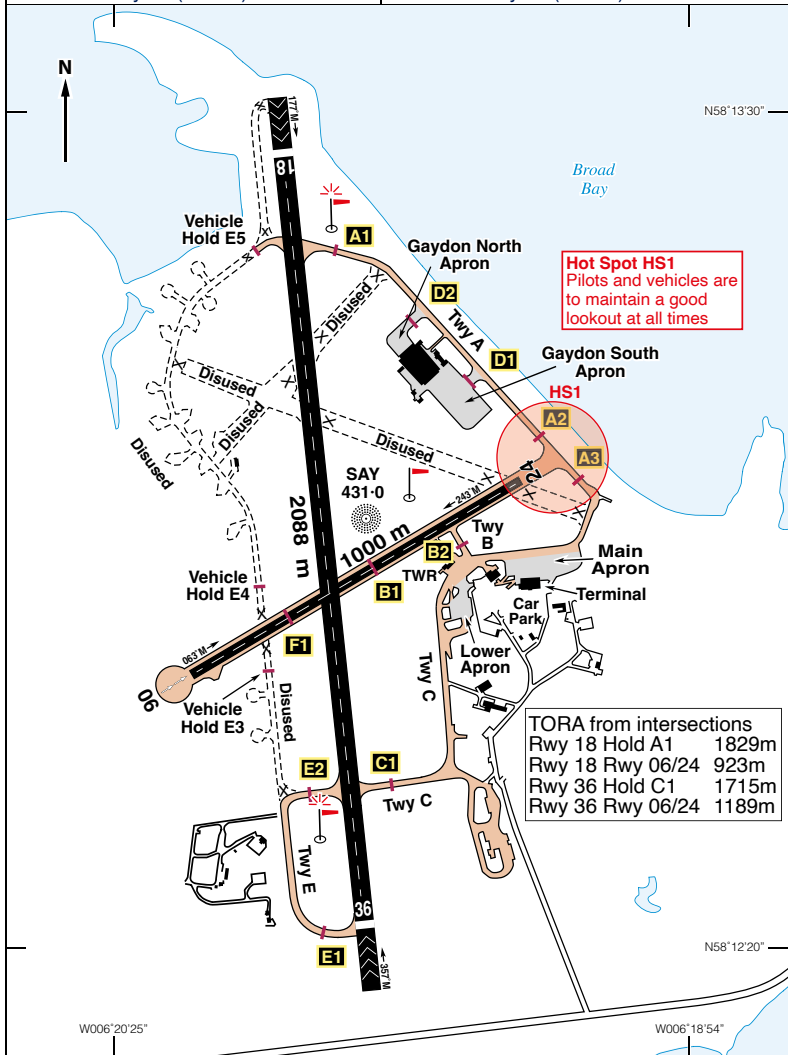
///buggy.spite.leads

STN 115-10 280 4-7

c/s Stornoway APP/TWR/AFIS 119-480 ATIS 115-100 (VOR 'STN')

NDB 'SAY' 431-0 (on A/D) VOR/DME 'STN' 115-100 (282°M/4.4 nm to A/D)

LLZ/DME Rwy 18 (178°M) 'STW' 110-90 LLZ/DME Rwy 36 (358°M) 'SOY' 110-90



# EGPO

N58 12.93 W006 19.87		STORNOWAY			26ft AMSL
Rwy	Dim(m)	Surface	TORA(m)	LDA(m)	Lighting
18/36	2088x45	Asphalt	18-2088 36-2088	18-2088 36-2088	Ap Thr Rwy PAPI 3° Ap Thr Rwy PAPI 3°
06/24	1000x23	Asphalt	06-1000 24-1000	06-1000 24-1000	Thr* Rwy* APAPI 4° Thr* Rwy* APAPI 3.5°
* Portable Electric, 30 mins PNR.					
<b>Op hrs:</b> 3 hrs PPR. Mon-Fri 0715-0915; 0945-1145; 1215-1430; 1500-1700; 1800-1945 Sat 0715-0915; 0945-1145; 1215-1415; 1445-1530. Sun 1245-1445; 1515-1715.					
<b>Landing Fee:</b> Private light aircraft £21.57 (per tonne MTWA) Excl. VAT.					
<b>Customs:</b> Mandatory GAR required, see, <a href="https://www.submit-general-aviation-report.service.gov.uk/welcome/index#more-information">https://www.submit-general-aviation-report.service.gov.uk/welcome/index#more-information</a>					
<b>Hangarage:</b> Available.			<b>Maintenance:</b> Nil.		
<b>Remarks:</b> Operated by Highlands & Islands Airports Ltd, Stornoway Aerodrome, Isle of Lewis HS2 OBN. 3 hours PPR. Rwy 06/24 not available for night landings.					
<b>Circuits:</b> LH on Rwys 18 and 24, RH on Rwys 06 and 36.					
High visibility clothing required Airside.					
Pilots of aircraft parking on the Lower Apron must report to ATC after parking.					
A walkway is provided to both of these points. Crossing the taxiway to ATC is controlled by traffic lights at the base of the Tower building.					
Aircraft that do not require the use of a licensed aerodrome and that wish to operate outside the notified hours of operation must comply with HIAL Out of Hours Indemnity Scheme. PPR applies to all out of hours flights.					
Details of the scheme and an application form can be found at: - <a href="http://www.hial.co.uk/about-us/charges-opening-hours-and-pilots-information/">http://www.hial.co.uk/about-us/charges-opening-hours-and-pilots-information/</a> or obtained from HIAL Operations, Tel: 01667 462445, Fax: 01667 464208.					
<b>Handling:</b> By arrangement with HIAL Tel: 01851 702256 or Loganair Tel: 01851 703673.					
<b>Warnings:</b> Minimum approach angles of 3° (indicated by PAPIs) must be strictly adhered to when using Rwy 36 due to vehicles on the road within the undershoot. Only marked taxiways to be used. Grass areas soft and unsafe. Width of Twys A and C on the east side of the aerodrome is 15m. All aircraft using the Main Apron will be marshalled. Exercise caution when manoeuvring due to the proximity of lighting pylons at the southern edge of the Main Apron. Marshalling instructions must be complied with. Severe down-draughts may be experienced on approaches. Birds can be expected on all approaches. Flocks of geese present in adjacent fields all year round. Coastguard Helicopter operate from the aerodrome H24.					
<b>Restaurant:</b> Refreshments.					
<b>Car Hire:</b> Tel: 01851 702658; 01851 710548; 0800 3285087.					
<b>Fuel:</b> 100LL, Jet A1. <b>Tel:</b> North Air 01851 703026. BP, Diners, Amex, Access.			<b>Tel:</b> 01851 707415 ATC. <b>Tel:</b> 01851 7707406 Admin. <b>Tel:</b> 01851 707444 ATIS. <b>Website:</b> <a href="http://www.hial.co.uk/stornoway-airport/">www.hial.co.uk/stornoway-airport/</a>		



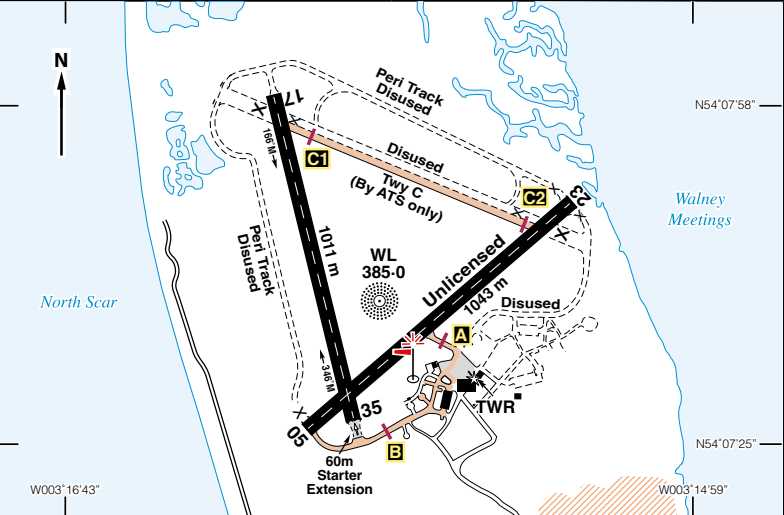
# EGNL (BWF)

N54 07.72 W003 16.01 **WALNEY** 44ft AMSL

1.5 nm NW of Barrow-in-Furness. [///segments.youth.wager](#) **WAL 114-10 355 44-5**

**c/s Walney Information** 118-080 AFIS Warton Radar 129-530 For App service

NDB 'WL' 385-0 (On A/D) ILS/DME Rwy 35 (348°M) 'I WL' 110-15 (See Remarks)



Rwy	Dim(m)	Surface	TORA(m)	LDA(m)	Lighting
17/35	1011x44	Asphalt	17-1011 35-998	17-1011 35-998	Thr Rwy PAPI 3.5° RH Ap Thr Rwy PAPI 3.5°
05/23	1043x43	Asphalt	Unlicensed		Thr Rwy APAPI 3.5°

**Op hrs:** Strictly PPR 24 hrs. Mon-Thu 0700-1900, Fri 0800-1700.

**Landing Fee:** £5.00 per 0.5 tonne up to 3 tonnes. £10.00 per tonne over 3 tonnes.

**Hangarage:** Limited. **Customs:** Nil. **Maintenance:** Nil.

**Remarks:** Operated by BAE Systems Marine Ltd, Maritime - Submarines, Walney Aerodrome, Barrow-in-Furness, Cumbria LA14 3TD. Licensed aerodrome. PPR 24 hrs.

**This aerodrome is not accepting visiting aircraft.**

ATS available for approved flights only.

Use of ILS/DME and NDB strictly 24 hrs PPR and by approved operators only.

Acraft in communication with Walney ATS may be allocated a conspicuity squawk of 4576.

Acraft must not select this squawk unless instructed to do so by ATS.

Acraft remaining in the circuit at Walney will be allocated a conspicuity squawk of 7010. Aircraft must not select this squawk unless instructed to do so by ATS.

**Warnings:** Avoid overflying R445 Barrow-in-Furness.

Windshear can occur on final approach over Walney Channel to the thld Rwy 23, particularly when the tide is out and the surface wind is down Rwy 23 at a speed of between 15-20 kts.

**Drone requests:** <https://app.airportal.aero>

**Restaurant:** Nil. **Car Hire:** Avis Tel: 01229 829555. Hertz Tel: 01229 836666.

**Fuel:** Jet A1.

**Tel:** 01229 476678 Ops

# EGLM

## WHITE WALTHAM

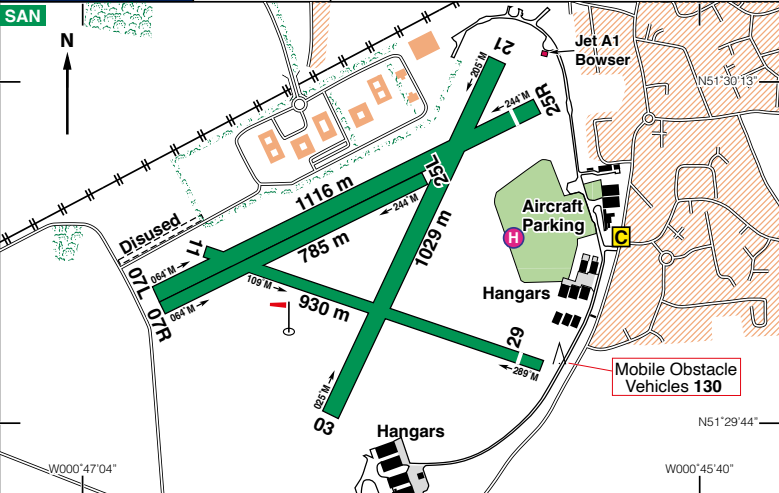
127ft AMSL

N51 30.04 W000 46.49

2 nm SW of Maidenhead. //pricing.inclines.timing

CPT 114-35 088 16-7

c/s Waltham Radio 122.605 A/G



Rwy	Dim(m)	Surface	TORA(m)	LDA(m)	Lighting
03/21	1029x45	Grass	03-1029 21-1029	03-1029 21-1029	Nil Nil
07L/25R	1116x45	Grass	07-1116 25-1116	07-1116 25-1049	Nil Nil
07R/25L	785x25	Grass	07-785 25-785	07-785 25-785	Nil Nil
11/29	930x30	Grass	11-930 29-930	11-930 29-867	Nil Nil

**Op hrs:** All acft are required to PPR. AD is open from 0800-1630 (0800-1930) or SS +30mins. Closing time maybe earlier if weather is unsuitable for flying.

**Landing Fee:** Single - £15, Twin - £30. Aircraft over 2000kgs £50.  
Please see website, [www.wlac.co.uk](http://www.wlac.co.uk) for fees for helicopters and overnight parking.

**Maintenance:** Available. **Hangarage:** Limited. **Customs:** 4 hrs PNR.

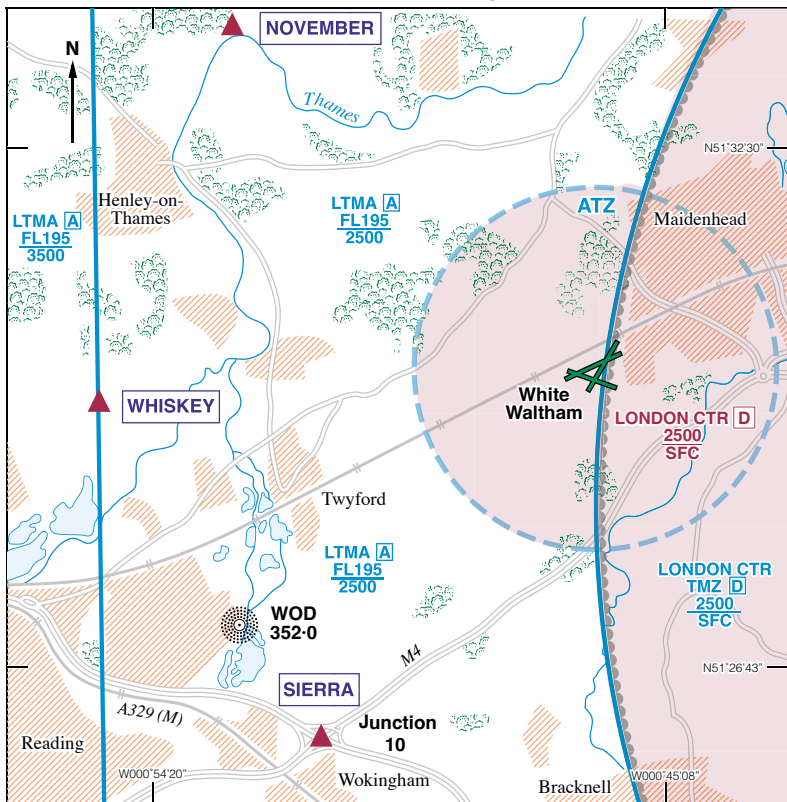
**Remarks:** Operated by White Waltham Airfield Ltd. Non-radio aircraft only permitted by prior arrangement. PPR via telephone or [www.wlac.co.uk/ppr-request/](http://www.wlac.co.uk/ppr-request/). Grass rwys, may be rough/undulating, are marked with chalk centre lines and rwy designators. Join overhead at 1200ft QFE. Circuits at 800ft QFE, variable direction. No overhead departures. Use of transponders is mandatory for suitably equipped acft. No taxiways, vacate runway when able. Visitors parking in front of the club house. **Helicopters** - new recommended routes are in place, please visit pilot information on [www.wlac.co.uk](http://www.wlac.co.uk) to view them.

Parking is to the West of the fixed wing parking area, unless by prior arrangement.

**Caution:** Vehicles use the perimeter track which bounds manoeuvring area to the North and East of the AD. Public road runs NE/SW 140m from Thld Rwy 29.  
Drone testing takes place on the AD up to 400ft AGL.

**Restaurants:** Licensed restaurant and Club facilities available. Tel: 01628 823799.

# WHITE WALTHAM AREA CHART



White Waltham Local Flying Area (LFA) is defined as that portion of the ATZ contained within the London CTR. VFR Flights within the LFA may take place without compliance with IFR requirements subject to the following conditions:

1. Aircraft to remain below cloud and in sight of the ground.
2. Maximum altitudes: 1500ft QNH, provided that aircraft can remain at least 500ft below cloud; otherwise 1000ft QNH.
3. Minimum flight visibility 3 km.

**Note.** Pilots of aircraft flying in the local flying area are responsible for providing their own separation from other traffic operating in the relevant airspace.

SVFR flights are required to be separated by Heathrow Radar.

Inbound aircraft are to report their position and altitude in relation to one of the following Reporting Points:

From North - **NOVEMBER** - bend in river north of Henley.

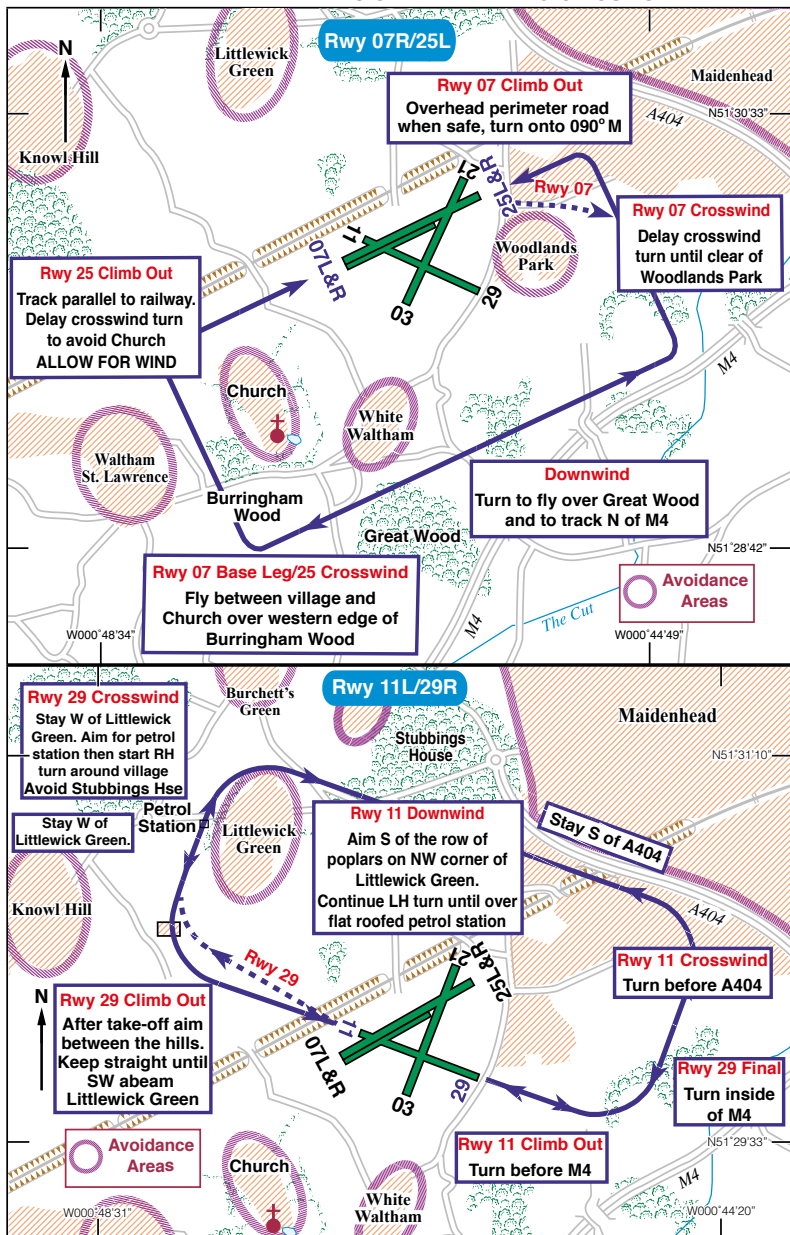
From West - **WHISKEY** - North of lakes East of Reading.

From South - **SIERRA** - Motorway junction north of Wokingham (Junction 10 M4).

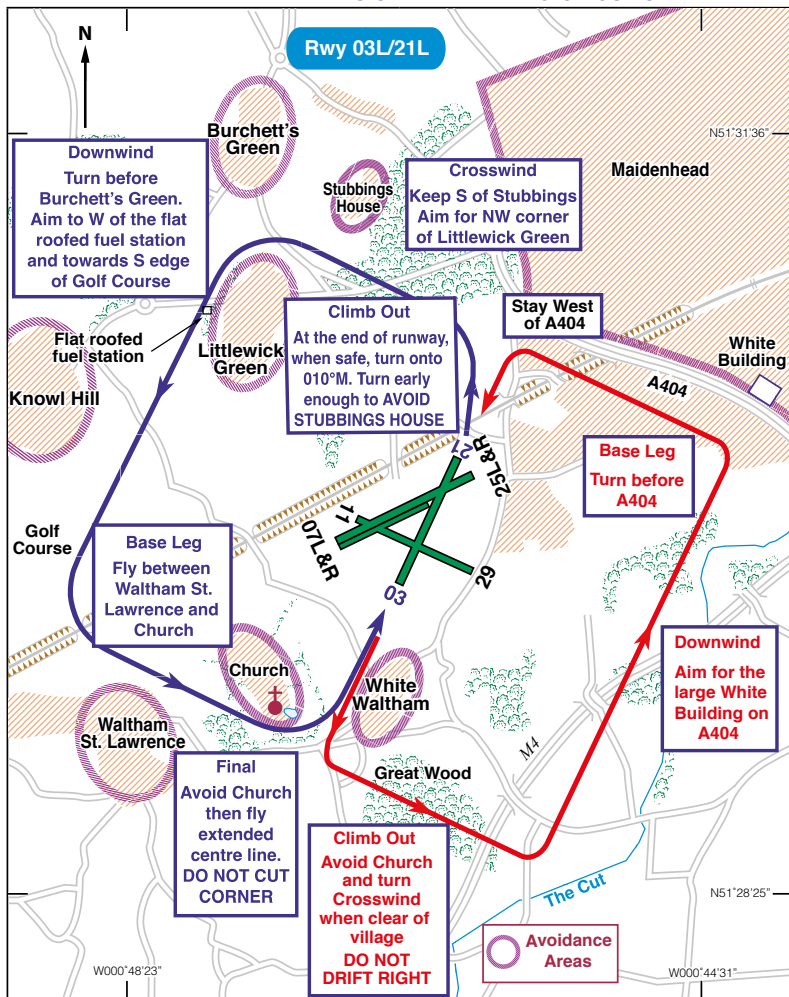
Regular users of the AD should be familiar with the joining procedures and circuits.

All information available on [www.wlac.co.uk](http://www.wlac.co.uk)

# WHITE WALTHAM - NOISE ABATEMENT & CIRCUITS



# WHITE WALTHAM - NOISE ABATEMENT & CIRCUITS



**Note:** Pilots unsure of any of the circuit procedures should discuss them with an Instructor. Pilots of departing acft are requested to conform to local noise abatement procedures. Details are available in the briefing room, on the website and via a briefing from operations. Pilots should take care that operating noise is kept to a minimum. No flying over built up areas, avoid overflying local villages.

Pilots of suitably equipped acft are to use the transponder to its maximum serviceability with the altitude information selected.

**Fuel:** 100LL, UL91, Jet A1.

**Tel:** 01628 823272.

**Website:** [www.wlac.co.uk](http://www.wlac.co.uk)