

EGPL (BEB)

N57 28.83 W007 21.83 **BENBECULA** 19ft AMSL

West side of Isle of Benbecula.

///mason.guarding.renovated

TIR 117-70 352 61-4

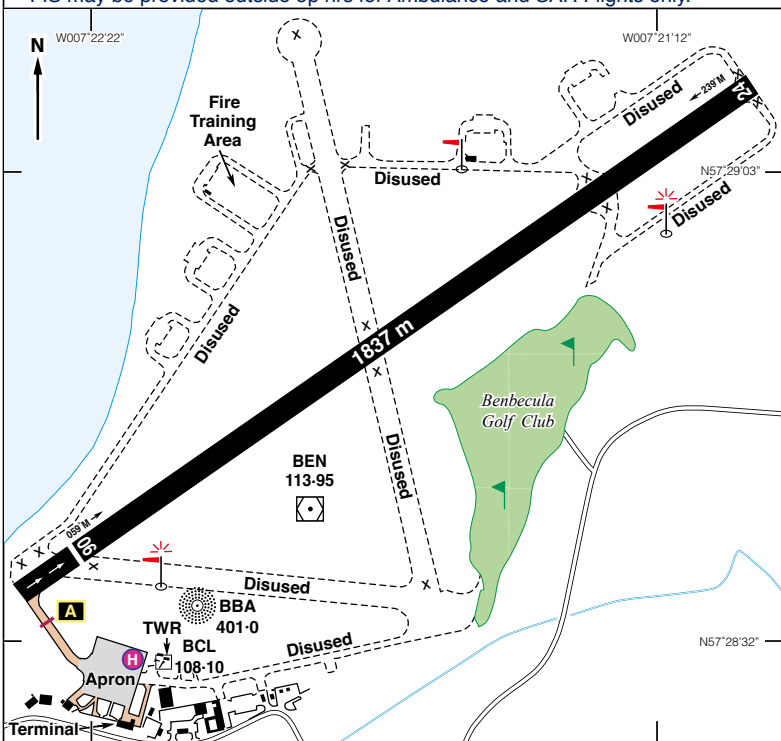
STN 115-10 225 57-8

c/s Benbecula APP/TWR/FIS* 119-205 | ATIS 129-885 c/s Benbecula Information

NDB 'BBA' 401-0 (On A/D) | VOR/DME 'BEN' 113-950 (On A/D) H24

DME 'BCL' 108-100 (on A/D) | ATS Op hrs as per AD Op hrs start time (-15 mins)

* FIS may be provided outside op hrs for Ambulance and SAR Flights only.



Rwy	Dim(m)	Surface	TORA(m)	LDA(m)	Lighting
06/24	1837x46	Bitumen	06-1837 24-1688	06-1717 24-1688	Ap Thr Rwy PAPI 3° Ap Thr Rwy PAPI 3°

AD Op hrs: PPR 3 Hrs. Mon, Wed & Fri 0800-1600; Tue & Thu 0800-1745; Sat 0800-0930, 1015-1145, 1215-1245; Sun 1515-1630.

ATS Op hrs: Mon, Wed & Fri 07450-1600; Tue & Thu 0745-1745; Sat 0745-0830, 1000-1145, 1200-1245; Sun 1300-1430.

Check current NOTAMs for any changes to AD Op hrs.

continued

EGPL

N57 28.83 W007 21.83 **BENBECULA** 19ft AMSL

Landing Fee: Private light aircraft up to 3000 kg MTWA - £22.30 inc, VFR and booked in advance.

Customs: By arrangement, 48 hrs PNR.

Customs: Nil.

Hangarage: Nil.

Maintenance: Nil.

Remarks: Operated by Highlands & Islands Airports Ltd., Benbecula Aerodrome, Balivanich, Western Isles HS7 5LW.

Prior permission 3 hours notice required for all movements.

Circuits:

- Circuit Height: 1000ft aal unless instructed by ATC.
- Circuit Directions: Runways 06 - LH; Runway 24 - RH.
- Joining instructions as instructed by ATC.

Handling: Limited aircraft handling provided by Loganair, Tel: 01870 602310.

Warnings:

- Intensive military activity takes place in the vicinity. ATIS/ATIS will advise EG D701A-F, Y and EG D704 activity. Instrument approaches to Runway 06 may not be available or may be restricted during periods of activity. The entry procedure from the BEN VOR and the BBA NDB, for instrument approaches to Runway 24, may not be available or may be restricted during periods of activity.
- The aerodrome is frequently opened for Air Ambulance and SAR flights outside published hours.
- The use of the aerodrome is unavailable for 'out of hours' permit holders due to airport security restrictions.
- All taxiways are closed, except between threshold of Runway 06 and the apron.
- There are no marked parking stands on the apron due to rapid changes in wind conditions, marshallers will be provided.
- Grass areas are soft and unsafe. Poor load bearing characteristics may be found on the runway/taxiway strips and the area adjacent to the apron. Only marked taxiway to be used.
- The apron area is subject to aerodrome security procedures during published hours.
- Flocks of geese present on, and in fields adjacent to, the aerodrome, all year round.
- Runway 24 during strong winds, moderate turbulence may be experienced on final between 8 to 4 nm.

Visual Reference Points (VRPs):

VRP

Lochmaddy Pier
Monach Isles Lighthouse

Co-ordinates

N57 35.77 W007 09.40.
N57 31.58 W007 41.65.

Accommodation: Hotels nearby. **Restaurant:** Light refreshments available.

Car Hire: Tel: 01870 602191.

Fuel: Nil.

Tel: 01870 602051 Admin.
01870 604818 A/D & Met Info.
01870 604804 ATC.
0141 842 7455 Logan Air Ops.
Fax: 01870 602278 Admin.
01870 604826 ATC.

Website: www.hial.co.uk/benbecula-airport