

EGTE (EXT)

N50 44.07 W003 24.83

EXETER

102ft AMSL

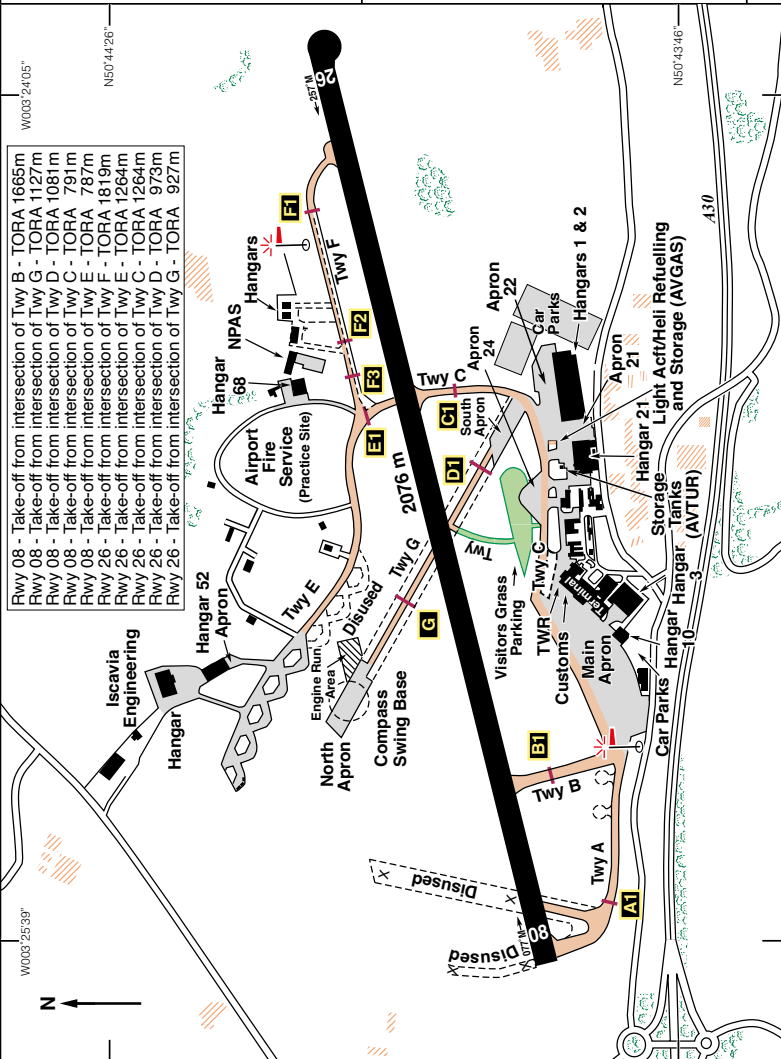
4 nm E of Exeter. ///swims.pink.bound

BHD 112-05 08 20-4

c/s Exeter APP 128-980 (LARS) TWR 119-805 ATIS 119-330

RAD 128-980, 123-580 (as directed) NDB 'EX' 337-0 (259°M/4-1 nm to Thr 26)

ILS/DME Rwy 08 (078°M) I-ET 109-90 ILS/DME Rwy 26 (258°M) I-XR 109-90



EGTE (EXT)

N50 44.07 W003 24.83		EXETER		102ft AMSL	
Rwy	Dim(m)	Surface	TORA(m)	LDA(m)	Lighting
08/26	2076x45	Asphalt	08-2036 26-2076	08-2036 26-2036	Ap Thr Rwy PAPI 3° Ap Thr Rwy PAPI 3.5°
Op hrs: PPR. Winter: Mon-Fri 0800-1800; Sat 0900-1700; Sun 0900-1700. Summer: Mon-Fri 0800-2000; Sat 0800-1900; Sun 0900-2000.					
Landing Fee: GA aircraft up to 0.5 tonnes: £14.04 per 0.5 tonne. For further information - see www.egte.org.uk Flight Briefing facilities and landing fees at Aviation Southwest 0830-1730. Outside of these times, please go to ATC.					
Customs: Nil.		Hangarage: Very limited.		Maintenance: Available.	
Remarks: Operated by Exeter & Devon Airport Ltd., Exeter Airport, Exeter, Devon EX5 2BD. Non-radio aircraft not accepted. Training flights must book slots by telephone to ATC. Inbound aircraft maintain 1000ft aal, until commencing descent on final approach.					
Arrivals/Departures for operators of Single Engine Piston Aircraft only: Light aircraft should avoid overflying Broadclyst, Clyst Honinton, Farringdon, West Hill, Whimble and Aylesbeare whenever possible or as otherwise directed by ATC. Wearing of high visibility clothing mandatory whilst on foot 'airside'. Suitable I.D. must be produced prior to entry to Restricted Zone. Handling by XLR Executive Jet Centre, Tel: 01392 354995, Fax: 01392 354943. Radio c/s Exeter Dispatch 130•175. Email: jetcentre@xlrexeter.com All GA acft that fall outside the scope for mandatory handling are to book in with flight briefing in advance of arrival, Tel: 01392 354915. All movements outside AD op hours incur extra charge and are subject to availability. For apron parking and transport contact Ops. All pilots must state their location on the aerodrome when requesting start up. Pilots of light acft must advise ATC if a backtrack for departure from a taxiway is required.					
Warnings: Light aircraft pilots beware of elevated runway lights and PAPI Rwy 08/26. Helicopter activity at the RD and E Hospital situated on the final approach to Rwy 08 at 3.25 nm from touchdown. Acft in the Dunkeswell ATZ may operate less than 5 nm N of the final approach track to Rwy 26. Pilots should expect late warning of acft leaving the Dunkeswell ATZ and deconfliction may not be achieved.					
Caution: Bird Hazard. AVGAS 100LL: Only aircraft with a wing span not exceeding 15m are permitted to use the Avgas installation. Maximum of three acft at any one time. Aircraft must call ATC prior to leaving the fuelling apron.					
VRPs	Axminster.....	N50 46.90		W002 59.90	
	Crediton.....	N50 47.43		W003 39.08	
	Cullompton	N50 51.47		W003 23.63	
	Exmouth	N50 37.48		W003 24.13	
	Topsham.....	N50 41.38		W003 28.82	
Fuel: 100LL, Jet A1. (see Remarks) Extra charge apply outside AD op hours.			Tel: 01392 447433 Airfield Ops 01392 354915 Flight Briefing 01392 354995 XLR Executive 01392 354957 Ground Handling Website: www.exeter-airport.co.uk		