

EGFF (CWL)

N51 23.80 W003 20.60

CARDIFF

220ft AMSL

8.5 nm SW of Cardiff. ///upholding.makes.intruders

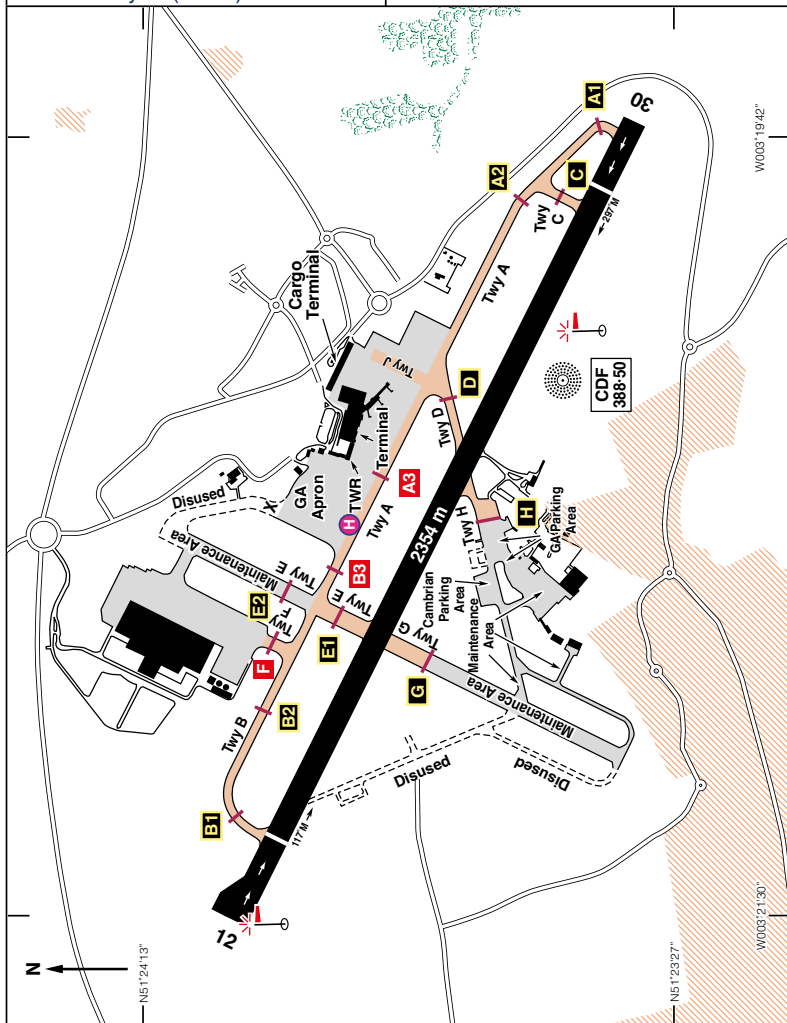
c/s Cardiff APP 119•155 Initial contact, (LARS 0600-2300), 125•855 (as directed)

RAD 125•855 0600-2300 ATIS 132•480 TWR 133•105

NDB 'CDF' 388•500 (On A/D)

ILS/DME Rwy 12 (117°M) I-CDF 110•70

ILS/DME Rwy 30 (297°M) I-CWA 110•70



EGFF (CWL)

N51 23.80 W003 20.60			CARDIFF		220ft AMSL
Rwy	Dim(m)	Surface	TORA(m)	LDA(m)	Lighting
12/30	2354x45	Asphalt	12-2318 †12-2098 30-2354 †30-2202		Ap Thr Rwy PAPI 3° Ap Thr Rwy PAPI 3°
† Take-off: Rwy 12 from Holding Point B - TORA 2098m Rwy 12 from Holding Point E - TORA 1494m Rwy 30 from Holding Point C - TORA 2130m Rwy 30 from Holding Point D - TORA 1426m Rwy 30 from Holding Point H - TORA 1339m					
Op hrs: H24.					
Landing Fee: Up to 2000kg £25.30; 2001-2500kg £51.40; 2501-3000kg £65.30; 3001-4000 kg £99.90; 4001-5000 kg £125.75; All + VAT. Parking: 0-2000kg £13.75; 2001-3000kg £19.40; 3001kg-5000kg £28.90. First 4 hours free.					
Hangarage: Nil.		Maintenance: Nil.		Customs: Available.	
Remarks: Operated by Cardiff Airport Ltd, Cardiff Airport, Rhosse, Barry, Vale of Glamorgan CF62 3BD. PPR to non-radio aircraft. Flights within the Cardiff CTR/CTA are governed by the regulations applicable to Class 'D' Controlled Airspace. Pilots operating within the vicinity of, but intending to remain outside the Cardiff controlled airspace within the area defined in EGFF AD 2.22 Flight procedures and maintaining a listening watch only on Cardiff approach frequency 119•155, are encouraged to select SSR code 3636. VRPs are listed overleaf. Due to proximity of St. Athan aerodrome (3nm W), overhead joins are not permitted. Rwy 30 RH circuits unless otherwise directed by ATC. Handling Agents: Handling is mandatory for all acft over 2000kg MTOW General Aviation Support (<2000kg MTOW) 07484 473145 generalaviation@cwl.aero Signature (Executive, GA, Military & Cargo), Tel: 01446 712637. Global trek (Executive, GA, Military & Cargo), Tel: 01446 712699. High-Visibility clothing MUST be worn airside. All departing acft are required to file a full or abbreviated flight plan electronically prior to departure. GA website link: https://cardiff-airport.com/general-aviation-cwl/					
Warnings: Expect turbulence on final approach to Rwy 30 in strong West to South Westerly winds and on final to Rwy 12 in strong East to North Easterly winds. Single engined aircraft should avoid overflying the Chemical Complex at Barry. TV Mast 1294ft amsl 034°M/4.4 nm and 1161ft amsl 332°M/4.3 nm. MOD St Athan is located just 3nm west of Cardiff Airport. Fast jets operate in their circuit VFR. Glider flying takes place at weekends. Cardiff ATIS will advise whether St. Athan is active.					
Restaurant: Restaurant and refreshments available in Terminal Building. The Flying Club Café and Bar is located Southside of the AD where GA will park, open Mon-Wed from 3pm, Thu-Sun from 9pm. Car Hire: Hertz/Europcar Tel: 01446 711722/0870 6075000.					
Fuel: 100LL, Jet A1- From Global Trek Aviation, Tel: 01446 712699. Jet A1 by arrangement with Swissport, Tel: 07388 943688.			Tel: 01446 712562 ATC 01446 711111 Airport 01446 729319 ATIS/ Ext 3319 Internally Email: cardiffatc@nats.co.uk Email: generalaviation@cwl.aero Email: adm@cwl.aero Website: www.cardiff-airport.com		

CARDIFF CTR/CTA VISUAL REFERENCE POINTS (VRPs)

VRP	Co-ordinates
Cardiff Docks *	N51 27.40 W003 09.10
Clatworthy Reservoir	N51 04.38 W003 22.15
Flat Holm Lighthouse	N51 22.53 W003 07.12
Lavernock Point	N51 24.38 W003 10.23
Llandegfedd Reservoir	N51 41.50 W002 58.24
M4 Junction 24	N51 36.12 W002 55.53
M4 Junction 36 (Services)	N51 31.93 W003 34.40
(North of Bridgend)	
M48 Old Severn Bridge	N51 36.67 W002 38.62
Minehead	N51 12.35 W003 28.50
Nash Point Lighthouse	N51 24.05 W003 33.13
St Hilary TV Mast (Note 1)	N51 27.45 W003 24.18
Taff Ely Wind Farm	N51 34.05 W003 28.26
Watchet Harbour	N51 10.92 W003 19.66
Wenvoe TV Mast (Note 2)	N51 27.56 W003 16.89

Notes:

1. Pilots are advised to use caution when routing via these VRPs as they are Air Navigation Obstacles with high elevation – See ENR 5.4 dataset for up to date details of ICAO AREA 1 Obstacles.
2. * Pilots are advised to use caution when routing via this VRP due to its proximity to Cardiff Heliport.

See VFR Routes overleaf and at pages 167 & chart on page 168.

Published VFR Routes to/from Cardiff

Pilots are to ensure that they are familiar with the route alignment and altitude restrictions prior to departure/entering the CTR.

Outbound Visual Routes

Route Designator	Exit Point	Rwy	Route	Maximum Altitude
VFR St Hilary	Bridgend	12/30	Route North of St Hilary TV mast and leave CAS to the West routing North of Bridgend at Jnct 36 VRP.	1500ft
VFR North	North	12/30	Route between the St Hilary and Wenvoe TV mast and leave CAS to the North.	1500ft
VFR Wenvoe	West Cardiff Docks	12/30	Route East of the Wenvoe TV mast and leave CAS to the North East.	1500ft
VFR Flat Holm	NE Flat Holm Lighthouse	12/30	Route North of Barry, then North of Flat Holm Island and leave CAS at the South/East zone boundary.	1500ft
VFR South	North Minehead	30	Route East of the quarry (1nm West of Cardiff Airport) and leave CAS to the South towards Minehead VRP.	1500ft

Remarks:

Cardiff will endeavour to remove the 1500ft restriction for flight over water ASAP.

VFR South	North Minehead	12	Route South and leave CAS to the South towards Minehead VRP.	1500ft
-----------	----------------	----	--	--------

Remarks:

Cardiff will endeavour to remove the 1500ft restriction for flight over water ASAP.

VFR Nash point	Nash Point	30	Route East of the quarry (1nm West of Cardiff Airport) and leave CAS to the West along the coast. over water, via Nash Point.	1500ft
----------------	------------	----	---	--------

Remarks:

Route normally only available when St Athan is **not** active.

VFR Nash Point	Nash Point	12	Leave CAS to the West along the coast, over water, via Nash Point.	1500ft
----------------	------------	----	--	--------

Remarks:

Route normally only available when St Athan is **not** active.

VFR Watchet	Watchet Harbour VRP	30	Route east of the quarry (1nm west of Cardiff airport) and leave CAS to the south east via Watchet Harbour VRP.	1500ft
-------------	---------------------	----	---	--------

Remarks:

Cardiff will endeavour to remove the 1500ft restriction for flight over water ASAP.

VFR Watchet	Watchet Harbour VRP	12	Route south east and leave CAS to the south east via Watchet Harbour VRP.	1500ft
-------------	---------------------	----	---	--------

Remarks:

Cardiff will endeavour to remove the 1500ft restriction for flight over water ASAP.

Inbound Visual Routes are listed overleaf

Published VFR Routes to/from Cardiff

Pilots are to ensure that they are familiar with the route alignment and altitude restrictions prior to departure/entering the CTR.

Inbound Visual Routes

Route Designator	Exit Point	Rwy	Route	Maximum Altitude
VFR St Hilary	Bridgend	12/30	Enter CAS via Bridgend and route North of St Hilary TV mast, then as directed by Cardiff ATC.	1500ft
VFR North	North	12/30	Enter Cardiff CAS from the North between the St Hilary and Wenvoe TV masts, then as directed by Cardiff ATC.	1500ft
VFR Wenvoe	West Cardiff Docks	12/30	Enter Cardiff CAS via the Wenvoe TV mast, then as directed by Cardiff ATC.	1500ft
VFR Cardiff Docks	Cardiff Docks	12/30	Enter Cardiff CAS via Cardiff Docks, then as directed by Cardiff ATC.	1500ft
VFR Flat Holm	North of Flat Holm Lighthouse	12/30	Enter Cardiff CAS via Weston aerodrome, route North of Flat Holm Lighthouse towards Lavernock Point, then as directed by Cardiff ATC.	1500ft
VFR South	North Minehead	30	Enter Cardiff CAS from the South remaining East of the quarry (1nm West of Cardiff Airport) then as directed by Cardiff ATC.	1500ft
VFR South	North Minehead	12	Enter Cardiff CAS from the South, then as directed by Cardiff ATC.	1500ft
VFR Nash point	Nash Point	30	Enter Cardiff CAS via Nash Point, route along the coast, remaining over water, then as directed by Cardiff ATC.	1500ft

Remarks:

Route normally only available when St Athan is **not** active.

VFR Nash Point	Nash Point	12	Enter Cardiff CAS via Nash Point, route along the coast, remaining over water until East of the quarry (1nm West of Cardiff Airport), then as directed by Cardiff ATC.	1500ft
----------------	------------	----	--	--------

Remarks:

Route normally only available when St Athan is **not** active.

VFR Watchet	Watchet Harbour VRP	30	Enter Cardiff CAS from the south east, then as directed by Cardiff ATC.	1500ft
VFR Watchet	Watchet Harbour VRP	12	Enter Cardiff CAS from the south east, remaining east of the quarry (1nm west of Cardiff airport) then as directed by Cardiff ATC.	1500ft

CARDIFF VFR ROUTES

